



Dún Laoghaire-Rathdown

Heritage Plan

2021 - 2025

Screening Report for Appropriate
Assessment

20th July 2021

Dún Laoghaire-Rathdown County Council

Heritage Plan

Screening Report for Appropriate Assessment

Document Stage	Document Version	Prepared by	Approved by
Final	1	Rajshree Anand, MSc	Ruth Minogue MCIEEM
Final	2	RM MCIEEM	PDoherty Msc

This report has been prepared by DEC Ltd with all reasonable skill, care and diligence. Information report herein is based on the interpretation of data collected and has been accepted in good faith as being accurate and valid.

This report is prepared for Dún Laoghaire-Rathdown County Council and we accept no responsibility to third parties to whom this report, or any part thereof, is made known. Any such party relies on the report at their own risk.

Table of Contents

1.1	INTRODUCTION	1
1.2	HABITATS DIRECTIVE ASSESSMENT	1
1.3	STAGES OF THE HABITATS DIRECTIVE ASSESSMENT	3
<u>2.0</u>	<u>SCREENING METHODOLOGY</u>	<u>4</u>
<u>3.0</u>	<u>DESCRIPTION OF THE DLR HERITAGE PLAN</u>	<u>5</u>
3.1	INTRODUCTION	5
3.2	OVERVIEW OF DÚN LAOGHAIRE-RATHDOWN HERITAGE PLAN 2021	5
<u>4.0</u>	<u>IDENTIFICATION OF EUROPEAN SITES WITHIN THE ZONE OF INFLUENCE OF THE PLAN</u>	<u>6</u>
4.1	CONSERVATION OBJECTIVES OF EUROPEAN SITES	6
4.2	EUROPEAN SITES WITHIN 15KM OF THE PLAN	7
<u>5.0</u>	<u>IMPACTS TO EUROPEAN SITES</u>	<u>22</u>
5.1	EXAMINATION OF THE PLAN'S POTENTIAL TO RESULT IN NEGATIVE IMPACTS TO EUROPEAN SITES WITHIN 15KM OF THE PLAN AREA	34
5.2	IN-COMBINATION EFFECTS WITH OTHER PLANS & PROJECTS	35
<u>6.0</u>	<u>SCREENING CONCLUSION</u>	<u>35</u>
	<u>REFERENCES</u>	<u>36</u>

1.1 INTRODUCTION

Dún Laoghaire-Rathdown County Council intends to implement a Heritage Plan for Dún Laoghaire-Rathdown (DLR). DEC Ltd. have been appointed by DLR County Council to prepare a Screening Report for Appropriate Assessment for the proposed plan.

The function of this report is to identify whether or not the plan has the potential to result in likely significant effects to European Sites and to provide information so that DLR County Council can determine whether a Natura Impact Statement and Appropriate Assessment is required for the Heritage Plan.

1.2 HABITATS DIRECTIVE ASSESSMENT

Article 6(3) of the Habitats Directive requires an assessment of the potential effects of a land use plan or project on one or more Natura 2000 (N2K) Sites. It is noted that a Habitats Directive Assessment (HDA) is commonly referred to as an “Appropriate Assessment” (Dodd *et al*, 2007). However, “Appropriate Assessment” forms only one stage of the HDA process (all stages making up the assessment process are outlined in detail below). The EU Habitats Directive provides the legislative framework for the protection of habitats and species throughout Europe through the establishment of a network of designated conservation areas known as the N2K network. The N2K network includes sites designated as Special Areas of Conservation (SACs), under the EU Habitats Directive and Special Protection Areas (SPAs) designated under the EU Birds Directive. Under the European Communities (Birds and Natural Habitats Regulations 2011, as amended) SACs and SPAs are referred to as European Sites. SACs are designated in areas that support habitats listed on Annex I and/or species listed on Annex II of the Habitats Directive. SPAs are designated in areas that support: 1% or more of the all-Ireland population of bird species listed on Annex I of the EU Birds Directive; 1% or more of the population of a migratory species; and more than 20,000 waterfowl.

Articles 6(1) & (2) of the Habitats Directive set out provisions for the conservation management of European Sites. Articles 6(3) and 6(4) of this Directive set out a series of procedural steps to test whether or not a plan or project is likely to affect a European Sites. Article 6(3) also establishes the requirement for a HDA:

“any plan or project not directly connected with or necessary to the management of the (European) site but likely to have a significant effect thereon, either individually or in combination with other plans and projects, shall be subjected to appropriate assessment of its implications for the site in view of the site’s conservation objectives. In light of the conclusions of the assessment of the implication for the site and subject to the provisions of paragraph 4, the competent national authorities shall agree to the plan or project only after having ascertained that it will not affect the integrity of the site concerned and, if appropriate, after having obtained the opinion of the general public”.

Therefore, the objective of this Screening is to identify whether or not any land use measures that may be supported by the Plan will have the potential to negatively affect the Conservation Objectives of European Sites. Such a conclusion will be arrived at by assessing the implications of future land use activities that could be implemented or supported by the Plan on each European Site occurring within its zone of influence.

The HDA is underpinned by the precautionary principle. Therefore, if the risk of negative impacts to the conservation objectives of a European Site cannot be ruled out it is assumed that the potential for an adverse impact will exist. Where such uncertainties are identified during the assessment, measures will be proposed to avoid or mitigate the risk of adverse impacts occurring.

The Screening was undertaken with reference to the following guidance documents on Habitats Directive Assessments:

- Appropriate Assessment of Plans and Projects in Ireland – Guidance for Planning Authorities (2009). DEHLG.
- Managing Natura 2000 Sites – The provisions of Article 6 of the Habitats directive 92/43/EEC. European commission (2018).
- Assessment of Plans and Projects Significantly Affecting Natura 2000 sites – Methodological Guidance of the Provisions of Article 6(3) and (4) of the Habitats directive 92/43/EEC. European Commission (2001).

1.3 STAGES OF THE HABITATS DIRECTIVE ASSESSMENT

The European Commission (2001) Guidance has outlined a staged process for the completion of a HDA.

- Stage 1 – Screening: This stage defines the proposed plan, establishes whether the proposed plan is necessary for the conservation management of the European Site and assesses the likelihood of the plan to have a significant effect, alone or in combination with other plans or projects, upon a European Site.
- Stage 2 – Appropriate Assessment: If a plan or project is likely to have a significant effect an Appropriate Assessment must be undertaken. In this stage the impact of the plan or project to the Conservation Objectives of the European Site is assessed. The outcome of this assessment will establish whether the plan will have an adverse effect upon the integrity of the European Site.
- Stage 3 – Assessment of Alternative Solutions: If it is concluded that, subsequent to the implementation of mitigation measures, a plan has an adverse impact upon the integrity of a European Site it must be objectively concluded that no alternative solutions exist before the plan can proceed.
- Stage 4 – Where no alternative solutions exist and where adverse impacts remain but imperative reasons of overriding public interest (IROPI) exist for the implementation of a plan or project an assessment of compensatory measures that will effectively offset the damage to the Natura site 2000 will be necessary.

2.0 SCREENING METHODOLOGY

The function of the Screening Assessment is to identify whether the Plan will have a likely significant effect on European Sites. In this context “likely” means a risk or possibility of effects occurring that **cannot** be ruled out based on objective information and “significant” means an effect that would undermine the conservation objectives of the European sites, either alone or in-combination with other plans and projects (Office of the Planning Regulator (OPR), 2021) .

The nature of the likely interactions between the Plan and the Conservation Objectives of European Sites will depend upon the:

- the ecological characteristics of the species or habitat, including their structure, function, conservation status and sensitivity to change; *and/or*
- the character, magnitude, duration, consequences and probability of the impacts arising from land use activities associated with the plan, in combination with other plans and projects.

The European Commission Guidelines (2001) outline the stages involved in undertaking a Screening assessment of a plan or project that has the potential to have likely significant effects on European Sites. The methodology adopted for the Screening of the Plan is informed by these guidelines and was undertaken in the following stages:

- A brief description of the Plan is provided and determine whether it is necessary for the conservation management of European Sites;
- Identification of European Sites occurring within the zone of influence of the Plan;
- Identification of potential likely significant effects to European Sites; and
- Identification of other plans or projects that, in combination with the Plan, have the potential to affect European Sites.

3.0 DESCRIPTION OF THE DLR COUNTY HERITAGE PLAN

3.1 INTRODUCTION

This Plan has been prepared by the Heritage Section of DLR County Council under the Actions of the draft DLR County Development Plan 2022-2028. An overview of the new DLR Heritage Plan 2021 is provided below and a detailed presentation on key elements of the plan is provided in Annex A to this report.

3.2 OVERVIEW OF DÚN LAOGHAIRE RATHDOWN HERITAGE PLAN 2021

The new Heritage Plan establishes a framework for coordinated heritage management and programming for the next 5 years.

The vision of the plan is of the DLR Heritage Plan is summarised as follows:

- A Plan for all the people living in the county
 - *Heritage is nearby and for everyone*
 - *Embrace different perspectives for the many heritages the county has*
 - *Invitation to all to enjoy local heritage*
- Build capacity across the heritage sector
 - *Fuel people power - support the heritage sector*
 - *Partner to succeed - collaborate and connect*
 - *Enable community-led/ expert-fed initiatives*
- Safeguard what we value and manage change with purpose
 - *Care for what we hand on to the next generation*
 - *Ensure we have the information we need for good heritage management*
 - *Incorporate climate action into all aspects of our work*

Seven areas of focus (AOF) are identified and form the basis of this plan, these are as follows:

- AOF1: What's the story? - *Where and how we tell the stories of this place*

- AOF 2: Our Place in Time - *How we look after what we value and how we manage change*
- AOF 3: Cherishing the Immediate - *Understanding what's on our doorstep, providing stepping stones of encounter*
- AOF 4: New Ways of Living- *Adapting to 21st century realities and incorporating climate change action*
- AOF 5: The Voices of Place - *Celebrating the distinctive sounds of Dún Laoghaire-Rathdown*
- AOF 6: On the record - *How we will keep track of and enable access to information and documentary heritage, how and what we remember*
- AOF 7: Starting young/Staying curious - *Lighting the spark in a new generation, keeping it lit*

A set of aims and actions are grouped around the areas of focus above. These are detailed in Annex A to this report and are accompanied by a commentary in relation to potential environmental effects.

4.0 IDENTIFICATION OF EUROPEAN SITES WITHIN THE ZONE OF INFLUENCE OF THE PLAN

In order to identify the European Sites that could be significantly affected by the implementation of the Plan, an initial long-list of sites occurring within a 15km radius of the Plan area (i.e. DLR County Council) has been compiled. The establishment of a 15km buffer area surrounding the Plan area is in line with the DAHLG recommended procedures for identifying European Sites. The buffer distance of 15km was also considered sufficient to ensure all potential impacts to European Sites arising from the implementation of the Plan were taken into account (see Section 4.1 below for more information). This is based on the absence of any impact pathways (i.e., the absence of a hydrological pathway) between the Plan area and other European Sites occurring at a distance greater than 15km from the Plan area.

4.1 CONSERVATION OBJECTIVES OF EUROPEAN SITES

Generic conservation objectives for all European Sites have been established by the National Parks and Wildlife Service (NPWS). The generic conservation objective for the two habitats

occurring within the zone of influence of the project is to maintain the favourable conservation status of these habitats. The favourable conservation status of these habitats is achieved when

- its natural range, and area it covers within that range, are stable or increasing, and
- the specific structure and functions which are necessary for its long-term maintenance exist and are likely to continue to exist for the foreseeable future, and
- the conservation status of its typical species is favourable.

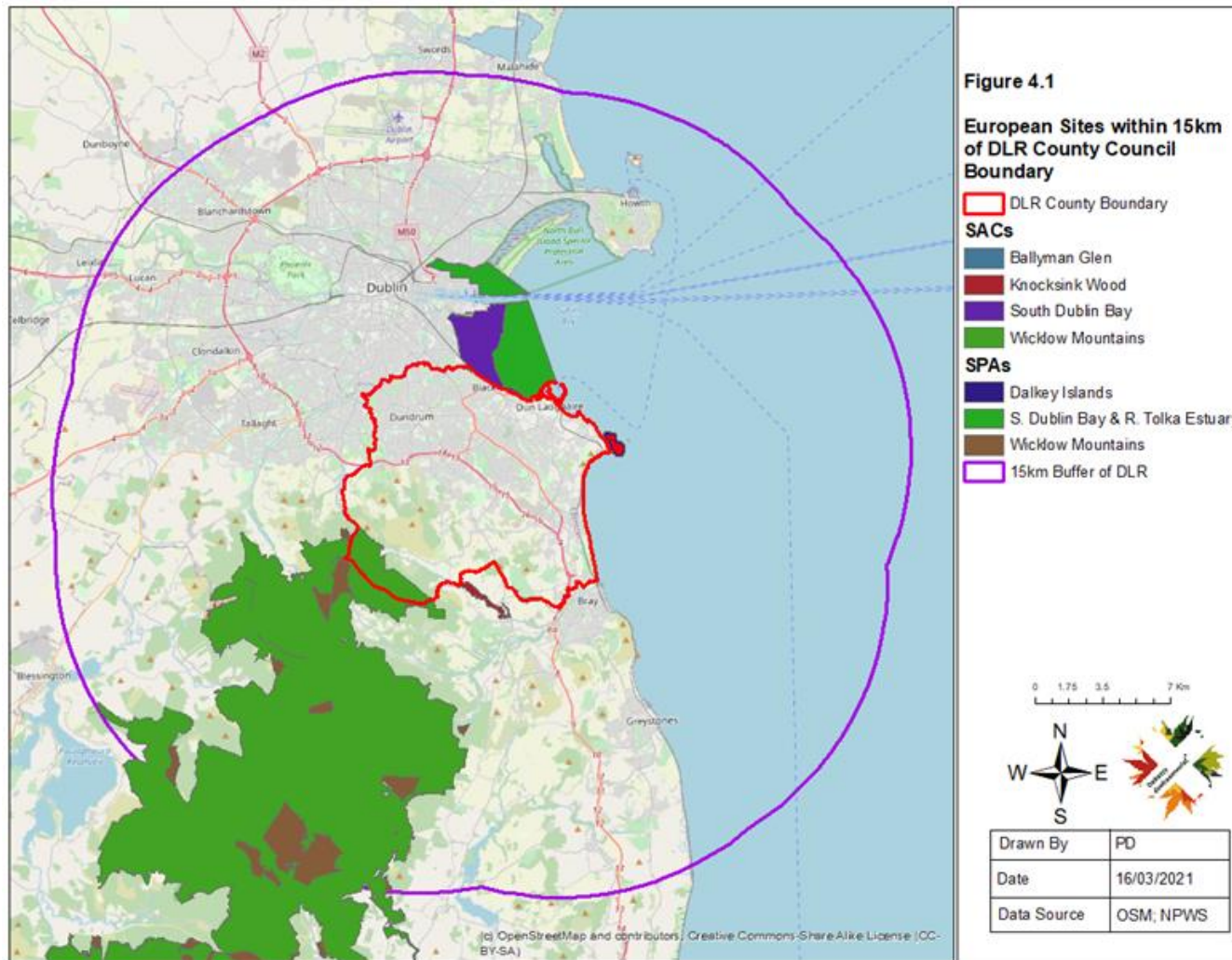
The generic conservation objective for the qualifying species occurring within the zone of influence of the project is to maintain or restore the favourable conservation status of these species. This is achieved when:

- population dynamics data on the species concerned indicate that it is maintaining itself on a long-term basis as a viable component of its natural habitats, and
- the natural range of the species is neither being reduced nor is likely to be reduced for the foreseeable future, and
- there is, and will probably continue to be, a sufficiently large habitat to maintain its populations on a long-term basis.

Site-specific conservation objectives of European Sites have been identified for many of the European Sites occurring within a 15km radius of the plan area and the details of these site-specific conservation objectives are provided by the NPWS at <https://www.npws.ie/protected-sites/conservation-management-planning/conservation-objectives>.

4.2 EUROPEAN SITES WITHIN 15KM OF THE PLAN

Table 4.1 lists all European Sites occurring within and surrounding the Plan area. A total number of seven European Sites, comprising four SACs and three SPAs occur within the Plan Area (see Figure 4.1). In addition to these European Sites a total of 13 SACs and 5 SPAs occur within a 15km radius of the Plan Area (see Figure 4.2 and Figure 4.3). Table 4.1 lists the qualifying features of interest of the SAC and the special conservation interests of the SPAs occurring within the Plan area and the surrounding 15km buffer zone. In addition, the broad habitat types and species for which each site is designated are also outlined



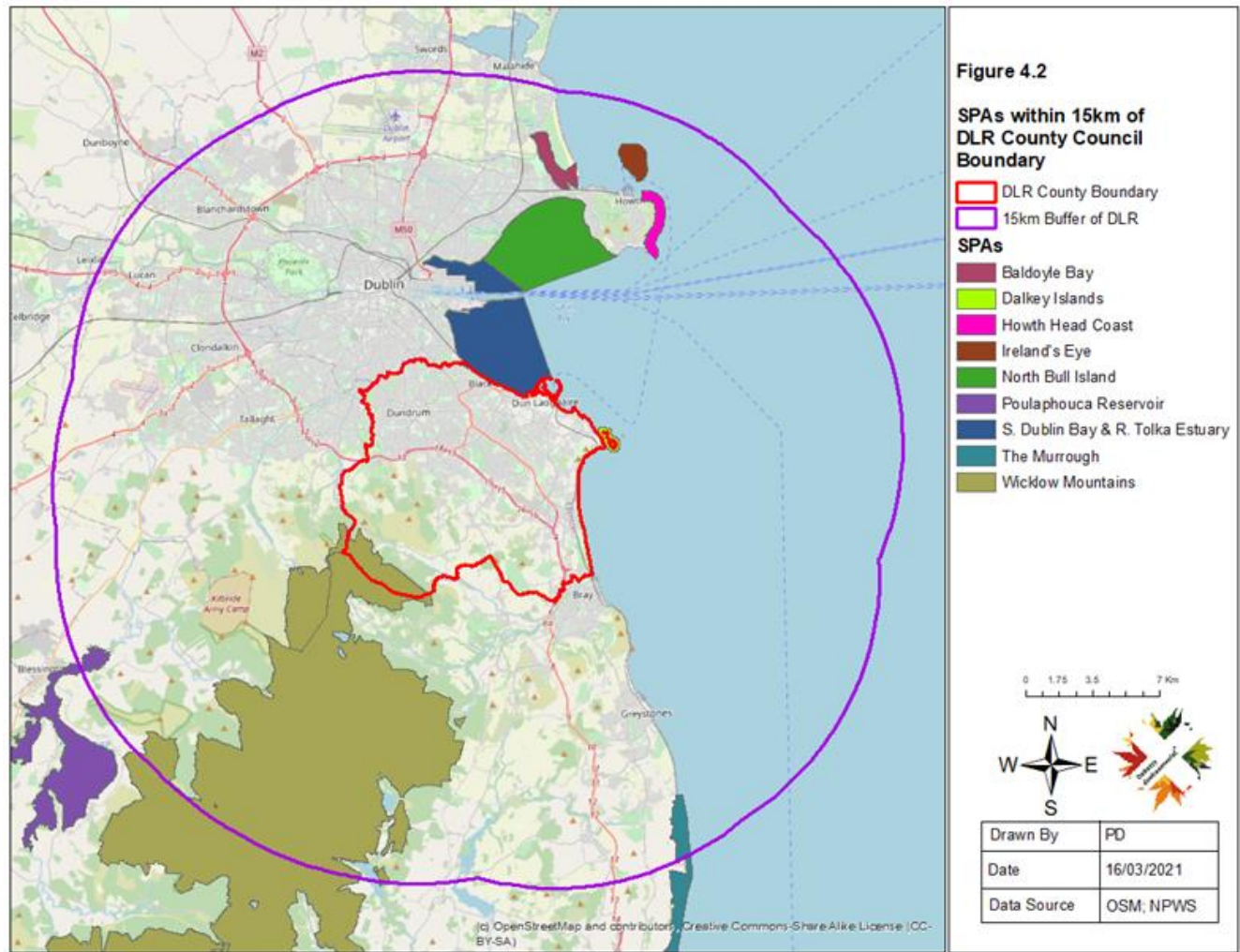


Table 4.1: European Sites within 15km of the Plan Area

European Sites	Distance from Plan Area	Qualifying Features of Interest/Special Conservation Interests	Broad QI/SCI Category
European Sites within the Plan Area			
Dalkey Island SPA	Within Plan area	Roseate Tern (<i>Sterna dougallii</i>) [A192] Common Tern (<i>Sterna hirundo</i>) [A193] Arctic Tern (<i>Sterna paradisaea</i>) [A194]	Breeding waterbirds
Ballyman Glen SAC	Within Plan area	Petrifying springs with tufa formation (Cratoneurion) [7220] Alkaline fens [7230]	Groundwater dependent habitats
Knocksink Woods SAC	Within Plan area	Petrifying springs with tufa formation (Cratoneurion) [7220] Alluvial forests with <i>Alnus glutinosa</i> and <i>Fraxinus excelsior</i> (<i>Alno-Padion</i> , <i>Alnion incanae</i> , <i>Salicion albae</i>) [91E0]	Groundwater dependent habitats

<p>South Dublin Bay & Tolka Estuary SPA</p>	<p>Within Plan area</p>	<p>Light-bellied Brent Goose (<i>Branta bernicla hrota</i>) [A046] Oystercatcher (<i>Haematopus ostralegus</i>) [A130] Ringed Plover (<i>Charadrius hiaticula</i>) [A137] Grey Plover (<i>Pluvialis squatarola</i>) [A141] Knot (<i>Calidris canutus</i>) [A143] Sanderling (<i>Calidris alba</i>) [A144] Dunlin (<i>Calidris alpina</i>) [A149] Bar-tailed Godwit (<i>Limosa lapponica</i>) [A157] Redshank (<i>Tringa totanus</i>) [A162] Black-headed Gull (<i>Chroicocephalus ridibundus</i>) [A179] Roseate Tern (<i>Sterna dougallii</i>) [A192] Common Tern (<i>Sterna hirundo</i>) [A193] Arctic Tern (<i>Sterna paradisaea</i>) [A194] Wetland and Waterbirds [A999]</p>	<p>Wintering coastal waterbirds Breeding Terns Coastal habitats</p>
---	-------------------------	--	---

<p>South Dublin Bay SAC</p>	<p>Within Plan area</p>	<p>Mudflats and sandflats not covered by seawater at low tide [1140] Annual vegetation of drift lines [1210] Salicornia and other annuals colonising mud and sand [1310] Embryonic shifting dunes [2110]</p>	<p>Coastal habitats</p>
<p>Wicklow Mountain SAC</p>	<p>Within Plan area</p>	<p>Oligotrophic waters containing very few minerals of sandy plains (<i>Littorelletalia uniflorae</i>) [3110] Natural dystrophic lakes and ponds [3160] Northern Atlantic wet heaths with <i>Erica tetralix</i> [4010] European dry heaths [4030] Alpine and Boreal heaths [4060] Calaminarian grasslands of the <i>Violetalia calaminariae</i> [6130] Species-rich <i>Nardus</i> grasslands, on siliceous substrates in mountain areas (and submountain areas, in Continental Europe) [6230] Blanket bogs (* if active bog) [7130]</p>	<p>Surface water dependent habitats Terrestrial grassland, peatland, woodland and exposed rock habitat Mammals (otters)</p>

		<p>Siliceous scree of the montane to snow levels (Androsacetalia alpinae and Galeopsietalia ladani) [8110]</p> <p>Calcareous rocky slopes with chasmophytic vegetation [8210]</p> <p>Siliceous rocky slopes with chasmophytic vegetation [8220]</p> <p>Old sessile oak woods with Ilex and Blechnum in the British Isles [91A0]</p> <p>Lutra lutra (Otter) [1355]</p>	
Wicklow Mountain SPA	Within Plan area	<p>Merlin (Falco columbarius)</p> <p>Peregrine (Falco peregrinus)</p>	Breeding raptor bird species
European Sites within 15km of the Plan area			
Glenasmole Valley SAC	4km to the west	<p>Semi-natural dry grasslands and scrubland facies on calcareous substrates (Festuco-Brometalia) (* important orchid sites) [6210]</p> <p>Molinia meadows on calcareous, peaty or clayey-silt-laden soils (Molinion caeruleae) [6410]</p>	<p>Terrestrial grassland and peatland habitat</p> <p>Groundwater dependent habitat</p>

		Petrifying springs with tufa formation (Cratoneurion) [7220]	
North Dublin Bay SAC	13.2 km to the southwest	<p>Mudflats and sandflats not covered by seawater at low tide [1140]</p> <p>Annual vegetation of drift lines [1210]</p> <p>Salicornia and other annuals colonising mud and sand [1310]</p> <p>Atlantic salt meadows (Glauco-Puccinellietalia maritimae) [1330]</p> <p>Mediterranean salt meadows (Juncetalia maritimi) [1410]</p> <p>Embryonic shifting dunes [2110]</p> <p>Shifting dunes along the shoreline with Ammophila arenaria (white dunes) [2120]</p> <p>Fixed coastal dunes with herbaceous vegetation (grey dunes) [2130]</p> <p>Humid dune slacks [2190]</p> <p>Petalophyllum ralfsii (Petalwort) [1395]</p>	<p>Coastal habitats</p> <p>Plant species (Petalwort liverwort)</p>

North Bull Island SPA	4.5km to the north	<p>Light-bellied Brent Goose (<i>Branta bernicla hrota</i>) [A046]</p> <p>Shelduck (<i>Tadorna tadorna</i>) [A048]</p> <p>Teal (<i>Anas crecca</i>) [A052]</p> <p>Pintail (<i>Anas acuta</i>) [A054]</p> <p>Shoveler (<i>Anas clypeata</i>) [A056]</p> <p>Oystercatcher (<i>Haematopus ostralegus</i>) [A130]</p> <p>Golden Plover (<i>Pluvialis apricaria</i>) [A140]</p> <p>Grey Plover (<i>Pluvialis squatarola</i>) [A141]</p> <p>Knot (<i>Calidris canutus</i>) [A143]</p> <p>Sanderling (<i>Calidris alba</i>) [A144]</p> <p>Dunlin (<i>Calidris alpina</i>) [A149]</p> <p>Black-tailed Godwit (<i>Limosa limosa</i>) [A156]</p> <p>Bar-tailed Godwit (<i>Limosa lapponica</i>) [A157]</p> <p>Curlew (<i>Numenius arquata</i>) [A160]</p> <p>Redshank (<i>Tringa totanus</i>) [A162]</p>	<p>Wintering coastal waterbirds</p> <p>Coastal habitats</p>
-----------------------	--------------------	--	---

		<p>Turnstone (<i>Arenaria interpres</i>) [A169]</p> <p>Black-headed Gull (<i>Chroicocephalus ridibundus</i>) [A179]</p> <p>Wetland and Waterbirds [A999]</p>	
Baldoyle Bay SAC	10km to the north	<p>Mudflats and sandflats not covered by seawater at low tide [1140]</p> <p>Salicornia and other annuals colonising mud and sand [1310]</p> <p>Atlantic salt meadows (<i>Glauco-Puccinellietalia maritimae</i>) [1330]</p> <p>Mediterranean salt meadows (<i>Juncetalia maritimi</i>) [1410]</p>	Coastal habitats
Baldoyle Bay SPA	10km to the north	<p>Light-bellied Brent Goose (<i>Branta bernicla hrota</i>) [A046]</p> <p>Shelduck (<i>Tadorna tadorna</i>) [A048]</p> <p>Ringed Plover (<i>Charadrius hiaticula</i>) [A137]</p> <p>Golden Plover (<i>Pluvialis apricaria</i>) [A140]</p> <p>Grey Plover (<i>Pluvialis squatarola</i>) [A141]</p>	<p>Wintering coastal waterbirds</p> <p>Coastal habitats</p>

		Bar-tailed Godwit (<i>Limosa lapponica</i>) [A157] Wetland and Waterbirds [A999]	
Malahide Estuary SAC	14.5km to the north	Mudflats and sandflats not covered by seawater at low tide [1140] Salicornia and other annuals colonising mud and sand [1310] Atlantic salt meadows (<i>Glauco-Puccinellietalia maritima</i>) [1330] Mediterranean salt meadows (<i>Juncetalia maritimi</i>) [1410] Shifting dunes along the shoreline with <i>Ammophila arenaria</i> (white dunes) [2120] Fixed coastal dunes with herbaceous vegetation (grey dunes) [2130]	Coastal Habitats
Howth Head SAC	8km to the north	Vegetated sea cliffs of the Atlantic and Baltic coasts [1230] European dry heaths [4030]	Terrestrial exposed rock and peatland habitats
Howth Head Coast SPA	8km to the north	Kittiwake (<i>Rissa tridactyla</i>) [A188]	

Ireland's Eye SAC	11km to the north	Perennial vegetation of stony banks [1220] Vegetated sea cliffs of the Atlantic and Baltic coasts [1230]	Terrestrial peatland habitats
Ireland's Eye SPA	11km to the north	Cormorant (<i>Phalacrocorax carbo</i>) [A017] Herring Gull (<i>Larus argentatus</i>) [A184] Kittiwake (<i>Rissa tridactyla</i>) [A188] Guillemot (<i>Uria aalge</i>) [A199] Razorbill (<i>Alca torda</i>) [A200]	Terrestrial peatland habitats
Bray Head SAC	2km to the south	Vegetated sea cliffs of the Atlantic and Baltic coasts [1230] European dry heaths [4030]	Terrestrial exposed rock and peatland habitats
Carriggower Bog SAC	11km to the southwest	Transition mires and quaking bogs [7140]	Terrestrial peatland habitats
Glen Of The Downs SAC	7km to the south	Old sessile oak woods with <i>Ilex</i> and <i>Blechnum</i> in the British Isles [91A0]	Terrestrial woodland habitats

Poulaphouca Reservoir SPA	8 km to the southwest	Greylag Goose (<i>Anser anser</i>) [A043] Lesser Black-backed Gull (<i>Larus fuscus</i>) [A183]	Winter waterbirds
The Murrrough Wetlands SAC	11km to the south	Annual vegetation of drift lines [1210] Perennial vegetation of stony banks [1220] Atlantic salt meadows (<i>Glauco-Puccinellietalia maritima</i>) [1330] Mediterranean salt meadows (<i>Juncetalia maritimi</i>) [1410] Calcareous fens with <i>Cladium mariscus</i> and species of the <i>Caricion davalliana</i> [7210] Alkaline fens [7230]	Groundwater dependent habitats Groundwater/surface water dependent species
The Murrrough SPA	11km to the south	Red-throated Diver (<i>Gavia stellata</i>) [A001] Greylag Goose (<i>Anser anser</i>) [A043] Light-bellied Brent Goose (<i>Branta bernicla hrota</i>) [A046] Wigeon (<i>Anas penelope</i>) [A050] Teal (<i>Anas crecca</i>) [A052]	Wintering waterbirds Breeding Terns

		Black-headed Gull (<i>Chroicocephalus ridibundus</i>) [A179] Herring Gull (<i>Larus argentatus</i>) [A184] Little Tern (<i>Sterna albifrons</i>) [A195] Wetland and Waterbirds [A999]	
Rockabill to Dalkey Island SAC	Adjacent to the Plan area	Reefs [1170] <i>Phocoena phocoena</i> (Harbour Porpoise) [1351]	Marine Habitat Marine mammal

4.3 IMPACTS TO EUROPEAN SITES

The next step of this report is to identify whether or not the plan has the potential to damage, disturb or result in the loss of qualifying habitat or qualifying species of European Site and undermine the conservation objectives of the European Sites listed in Table 4.1 above.

Table 4.1 identifies the aims, and subsequent actions of the plan and evaluates the potential for each to result in likely significant effects to European Sites. Where objectives and actions have the potential to result in positive implications for European Sites, such implications are recognised in Table 4.1.

Table 4.1: Evaluation of the Areas of Focus, Aims and Actions of the DLR Heritage Plan

Overall Aims and Actions under DLR Heritage Plan	Examination of Likely Significant Effects
<p>The following seven areas of focus (AOF) are identified in this Heritage Plan:</p> <p>AOF 1: What’s the story?- <i>Where and how we tell the stories of this place</i></p>	<p>The area of focus is compatible with the conservation management objectives of European Sites and will not have the potential to result in likely significant effects to European Sites.</p>
<p>AOF 2: Our place in time- <i>How we look after what we value and how we manage change</i></p>	<p>The area of focus will not involve landuse activities and will not have the potential to result in likely significant effects to European Sites.</p>
<p>AOF 3: Cherishing the immediate- <i>Understanding what’s on our doorstep, providing stepping stones of encounter</i></p>	<p>The area of focus will not involve landuse activities and will not have the potential to result in likely significant effects to European Sites.</p>
<p>AOF 4: New Ways of living- <i>Adapting to 21st Century realities and incorporating climate change action</i></p>	<p>The consideration of climate change in relation to Heritage Plan is positive and will not involve land use activities with the potential to result in likely significant effects to European Sites.</p>

<p>AOF 5: The voices of place- <i>Celebrate the distinctive sounds of Dún Laoghaire-Rathdown</i></p>	<p>The area of focus will not involve landuse activities and and will not have the potential to result in likely significant effects to European Sites</p>
<p>AOF 6: On the record- <i>How we will keep track of and early access information and documentary heritage, how and what we remember</i></p>	<p>The development of such a record of the county’s heritage will not involve land use activities with the potential to result in likely significant effects to European Sites.</p>
<p>AOF 7: Starting young/ Staying curious- <i>Lighting the spark in a new generation, keeping it lit</i></p>	<p>The creation of curiosity among the youth will not involve land use activities with the potential to result in likely significant effects to European Sites.</p>
<p>Aim 1.1: A coordinated, county-wide approach to telling the evolving story of people and place</p>	
<p>Action 1.1.1 Develop an Interpretation Framework to guide where and how we tell the county’s stories and to steer DLRCC and community-led projects. The emphasis will be on digital, creative, guided approaches, podcasts, temporary and permanent outdoor trails, enhancing existing interpretation, celebrating key viewpoints and improving the setting of/ access to heritage features through place-making and orientation.</p>	<p>The development of an Interpretation Framework including provision of a digital platform and improving access to heritage features of the county will not involve land use activities with the potential to result in likely significant effects to European Sites.</p>
<p>Action 1.1.2 Develop a digital text/image resource pool based on Interpretation Framework themes.</p>	<p>Creation of a digital image/text resource pool will not involve land use activities with the potential to result in likely significant effects to European Sites.</p>

<p>Action 1.1.3 Research and develop initiatives to platform untold stories recognising the multiplicity of heritages and perspectives in DLR.</p>	<p>Initiatives that will display untold stories related to the county’s heritage in different perspectives will not involve land use activities with the potential to result in likely significant effects to European Sites. This will also result in positive impacts for the conservation status of European Sites.</p>
<p>Aim 1.2 Mapping that inspires</p>	
<p>Action 1.2.1 Record and share the linguistic and historic origins of placenames, including street, field, landscape, water & seascape features and ensure that new place-naming is true to context and signage is accurate.</p>	<p>Recording and sharing of origins of place names and ensuring that the signages are accurate will not have the potential to result in likely significant effects to European Sites.</p>
<p>Action 1.2.2 Develop a series of creative, accessible discovery maps, in digital/printed format with a focus on public transport, active travel and universal design. Utilise creative and engaging techniques such as illustration, gamification and web based StoryMaps.</p>	<p>Development of series of accessible creative maps will not involve land use activities with the potential to result in likely significant effects to European Sites.</p>
<p>Aim 1.3 Audience development</p>	
<p>Action 1.3.1 Continue to enhance the annual Winter/Spring/Summer programmes of DLR heritage guided tours. Enable schools/group bookings and link the programmes with nationally themed weeks/days where relevant.</p>	<p>The seasonal themed programmes of guided tours for DLR heritage will not result in land use activities that have the potential to result in likely significant effects to European Sites.</p>
<p>Action 1.3.2 Implement the Marlay House, Cabinteely House and Carrickmines/Pale Ditch Interpretation and Communications Plans (2020).</p>	<p>The implementation of the Marlay House, Cabinteely House and Carrickmines/Pale Ditch Interpretation and Communications Plans (2020) will not result in land use activities that have the potential to result in likely significant effects to European Sites.</p>

<p>Action 1.3.3. Carry out research into current audiences and further develop programming to invite broad participation acknowledging the role of heritage in belonging and community.</p>	<p>Enhancing audience development will not result in land use activities that have the potential to result in likely significant effects to European Sites. The provision of such programmes will have the potential to contribute to the conservation management objectives of European Sites, through an increased awareness of the role of DLR’s heritage in community welfare.</p>
<p>Aim 2.1 Protected and accessible DLR historic sites, buildings and monuments</p>	
<p>Action 2.1.1 Implement the existing conservation plans for Dalkey Islands and Carrickmines Castle, and progress conservation plans for DLR owned Martello towers and historic burial grounds.</p>	<p>The implementation of conservation plans will not result in land use activities that have the potential to result in likely significant effects to European Sites as these conservation plans relate to the built heritage of these structures.</p>
<p>Action 2.1.2 Undertake condition assessments of buildings/structures on the Record of Protected Structures that are in Council ownership. Establish a maintenance programme for each structure in line with relevant guidance. Enable appropriate curation, access and use.</p>	<p>Assessment of protected buildings or structures enabling appropriate curation, access and use will not give rise to significant landuse effects and will not result in land use activities that have the potential to result in likely significant effects to European Sites.</p>
<p>Action 2.1.3 Engage a community archaeologist to progress the Dublin Mountains Archaeology Trail in line with the Dublin Mountains Partnership Strategic Plan 2020 – 2025.</p>	<p>Involvement of a community archaeologist to progress the Dublin Mountains Archaeology Trail in line with the Dublin Mountains Partnership Strategic Plan 2020 – 2025 will not give rise to landuse effects as this action relates only to progression of trail and engagement of community archaeologist and will not result in landuse activities that have the potential to result in likely significant effects to European Sites.</p>
<p>Aim 2.2: Recognition of the important role of heritage in people’s lived experience of place</p>	
<p>2.2.1 Update and expand DLR’s Historic Landscape Character mapping, identifying the visible and connected remnants of the past in contemporary urban, peri-urban and rural landscapes.</p>	<p>The expansion of DLR’s Historic Landscape Character mapping will not result in will not result in land use activities that have the potential to result in likely significant effects to European Sites.</p>

<p>2.2.2 Incorporate heritage information into all appropriate DLR spatial plans. Proactively identify opportunities for adaptive reuse of existing structures. Leverage heritage benefits for areas of new development to enable new communities to connect with the time depth of their landscapes.</p>	<p>The action will not result in land use activities that have the potential to result in likely significant effects to European Sites.</p>
<p>2.2.3 Map and support the feasibility study of projects on the historic paths we tread; mass routes, military routes, designed avenues, sheep walks and pedestrian links through the urban fabric, to the coast and into the mountains.</p>	<p>The action of mapping route projects will involve land use activities with slight potential to result in likely significant effects to European Sites. Such projects will have the potential to contribute to the conservation management objectives of European Sites, if proper environmental screening is done at the early stages to ensure there are no indirect impacts of these projects to European Sites.</p>
<p>Aim 3.1: Build the local heritage sector and support active engagement with heritage</p>	
<p>Action 3.1.1 Expand the number of participatory initiatives in DLR to build active involvement with heritage (e.g., adopt a monument, adopt a path, “friends of” schemes).</p>	<p>The action will not result in land use activities that have the potential to result in likely significant effects to European Sites.</p>
<p>Action 3.1.2 Provide support for community-led inventories and mapping of heritage features in the streetscape and landscape.</p>	<p>The action will not result in land use activities that have the potential to result in likely significant effects to European Sites.</p>
<p>Action 3.1.3 Support and promote heritage activity in the county through an annual community heritage grant scheme, advice on national funding opportunities and enabling skills development, training, apprenticeship and network building across the heritage sector.</p>	<p>The action will not result in land use activities that have the potential to result in likely significant effects to European Sites.</p>
<p>Aim 3.2 Collaborate with established visitor attractions and experiences to build local audiences</p>	

<p>3.2.1 Support, promote and develop Dalkey Castle and Heritage Centre as a key visitor experience in the county and explore potential for developing satellite experiences.</p>	<p>The action will not involve land use activities with the potential to result in likely significant effects to European Sites.</p>
<p>3.2.2 Promote local engagement with key heritage visitor experiences across the county including; the National Maritime Museum, James Joyce Tower and Museum and Airfield Estate.</p>	<p>The action will not involve land use activities with the potential to result in likely significant effects to European Sites.</p>
<p>Aim 3.3: Explore the potential for new heritage hubs</p>	
<p>Action 3.3.1 Explore opportunities to pilot new heritage hubs by repurposing buildings, spaces and public transport nodes. Start small, connected and tailored to local needs as part of a 10-minute neighbourhood and scope the potential to scale up over time.</p>	<p>The action will not involve land use activities with the potential to result in likely significant effects to European Sites.</p>
<p>Action 3.3.2 Identify suitable ways and locations across the county to celebrate DLR as an enduring place of arrival and departure, including the significant maritime and transport heritage of Dún Laoghaire Harbour in line with the Dún Laoghaire Harbour Heritage Management Plan, other DLR harbours and the broader context of the Dublin Bay UNESCO Biosphere.</p>	<p>The action will not involve land use activities with the potential to result in likely significant effects to European Sites.</p>
<p>Aim 4.1: Establish evidence base and integrate climate change actions into heritage operations</p>	

<p>Action 4.1.1 Carry out climate change risk assessments of archaeological and architectural heritage under DLR management to establish a baseline of heritage sites at risk and to inform a strategic basis for maintenance, stabilization and decision-making, incorporating evidence from the CHERISH climate change and coastal heritage project.</p>	<p>The action to conduct climate change risk assessments of archaeological and architectural heritage will have the potential to result in positive effects for ecosystems within the county including those supported by European Sites. Preparation of a baseline data for the heritage sites at risk will have the potential to contribute to the conservation management objectives of European Sites by aiding the strategic decision making.</p>
<p>Action 4.1.2 Collaborate on the implementation of the DLR County Biodiversity Plan 2021-2025, the DLR Climate Change Action Plan 2019 – 2024 (particularly nature-based solutions section), and the DLR Trees and Urban Forestry Strategy (2022-2031).</p>	<p>The action will not involve land use activities with the potential to result in likely significant effects to European Sites but ultimately will contribute to the conservation management objectives of European Sites through collaborative implementation of the mentioned plans and strategies.</p>
<p>Action 4.1.3 Collaborate on events for Dublin Climate Action Week and join the Climate Heritage Network.</p>	<p>The action will not result in land use activities that have the potential to result in likely significant effects to European Sites.</p>
<p>Aim 4.2: Heritage initiatives to support positive culture change and resilience</p>	
<p>Action 4.2.1 Include creative / design practitioners in heritage projects to support positive culture change in creative and engaging ways.</p>	<p>The action will not involve land use activities with the potential to result in likely significant effects to European Sites.</p>
<p>Action 4.2.2 Identify opportunities for DLR afforded by emerging EU programmes e.g., New European Bauhaus which combines design, sustainability and accessibility to facilitate a profound, collaborative, and multidisciplinary societal transformation to help deliver the European Green Deal.</p>	<p>The focus of the action is on sustainable design solutions, and this will not involve land use activities with the potential to result in likely significant effects to European Sites.</p>
<p>Action 4.2.3 Avail of the Climate Action Regional Offices (CARO) Climate Action Knowledge Hub for</p>	<p>The development of Climate Action Regional Offices and Climate Action Knowledge hubs will not involve land use activities with the potential to result in likely significant effects to European Sites.</p>

<p>tools, resources, research, case studies, training, events and ideas sharing and ensure that all outputs of the Heritage Office are part of the circular economy.</p>	
<p>Aim 4.3 Enable communities to access heritage in compact and connected places</p>	
<p>Action 4.3.1 Identify suitable towns and villages for collaborative approaches to historic built environment conservation such as the Collaborative Town Centre Health Check / Historic Town Initiative.</p>	<p>The action will contribute to the conservation management objectives of European Sites through collaborative approach towards conservation of historic built environment.</p>
<p>Action 4.3.2 Explore potential for heritage initiatives based on local and sustainable food production and foraging, and traditional uses of local trees and plants.</p>	<p>The action will have the potential to result in positive effects for ecosystems within the county including those supported by European Sites through initiatives promoting sustainable food production.</p>
<p>Aim 5.1 Celebrate the words and music from this place and their roots in landscape and seascape, biodiversity, geodiversity and historic urban fabric</p>	
<p>Action 5.1.1 Build on DLR’s tradition of connecting word and place. Continue and enhance programming and trails focused on our most celebrated writers, including the Ulysses centenary in 2022, and shine a light on lesser known DLR writers with strong connection to place.</p>	<p>The action will not result in land use activities that have the potential to result in likely significant effects to European Sites.</p>
<p>Action 5.1.2 Support contemporary writers to create new connections between word and place.</p>	<p>The action will not result in land use activities that have the potential to result in likely significant effects to European Sites.</p>
<p>Action 5.1.3 Identify opportunities to celebrate local musicians of note, ways to experience live music in heritage sites, and the local songs of the sea, the suburbs and the mountains.</p>	<p>The action will not result in land use activities that have the potential to result in likely significant effects to European Sites.</p>

Action 5.2 Celebrate the languages spoken now and in the past in this place and the associated folklore, place lore and opportunities for learning	
Action 5.2.1 Support initiatives to explore the heritage and contemporary use of the Irish language in DLR and actively engage with local Irish language groups and organisations to interweave Gaeilge into heritage plan implementation.	The action will not result in land use activities that have the potential to result in likely significant effects to European Sites.
Action 5.2.2 Incorporate the range of spoken languages within DLR into heritage initiatives, acknowledging the breadth of linguistic heritage diversity in the county.	The action will not result in land use activities that have the potential to result in likely significant effects to European Sites.
Action 5.2.3 Take opportunities to intertwine into programmes lost or nearly lost local words and sayings associated with trades/farming, working at sea and other sources - and how these relate to dlr placenames, folklore and place lore.	The action will not result in land use activities that have the potential to result in likely significant effects to European Sites.
Aim 5.3: Record, curate and share the county's oral history	
Action 5.3.1 Develop an oral history programme of capturing DLR voices and memories across the community in line with Irish Oral History Network guidance.	The action will not result in land use activities that have the potential to result in likely significant effects to European Sites.
Action 5.3.2 Explore potential collaborations with UCD's National Folklore Collection.	The action will not result in land use activities that have the potential to result in likely significant effects to European Sites.
Action 5.3.3 Develop a digital county repository of oral history using web based StoryMap techniques.	The action will not result in land use activities that have the potential to result in likely significant effects to European Sites.

Aim 6.1: A comprehensive approach to cataloguing and enabling access to documentary heritage	
Action 6.1.1 Resource the cataloguing and storage of DLR documentary heritage (archives, collections and records), recognising the important role of documentary heritage for research and public history. Enable physical and digital access and curation of content for exhibitions.	The action will not result in land use activities that have the potential to result in likely significant effects to European Sites as it aims to document the heritage sites for research and exhibitions.
Action 6.1.2 Explore the potential for a community digital archive in association with the Irish Community Archive Network and provide guidance to custodians of private archives.	The action will not result in land use activities that have the potential to result in likely significant effects to European Sites.
Action 6.1.3 Collate the imagery of change; explore the role for citizen science / development management in image capture of changing landscapes.	The implementation of this objective will have the potential to result in positive impacts for ecosystems, including those supported by European Sites through citizen science initiatives and public awareness of the heritage sites.
Aim 6.2: Clear guidance and approaches to the formal commemoration of people and events and ethical remembering	
Action 6.2.1 Audit the range, subject and type of DLR civic memorials.	The action will not result in land use activities that have the potential to result in likely significant effects to European Sites as it only focuses on the audits of civic memorials.
Action 6.2.2 Update the DLR Memorials Policy, integrating findings from the audit and the learnings from the Decade of Centenaries programme.	Updating the DLR Memorials Policy based on the findings of the proposed audits will not result in land use activities that have the potential to result in likely significant effects to European Sites.

<p>Action 6.2.3 Support a local genealogical service and explore the potential of diaspora initiatives connected with Dún Laoghaire Harbour.</p>	<p>The action will not result in land use activities that have the potential to result in likely significant effects to European Sites.</p>
<p>Aim 6.3: Up to date and accessible heritage information, surveys and inventories</p>	
<p>Action 6.3.1 In line with the National Open Data Strategy (2017-2022), digitize and make easily available existing DLR geospatial heritage surveys and inventories to Heritage Maps and Dublinked Open Data Store.</p>	<p>The action will not result in land use activities that have the potential to result in likely significant effects to European Sites.</p>
<p>Action 6.3.2 Support the updating of the Dublin County Archaeology GIS project and the Dublin Suburbs and County volume of the Buildings of Ireland series.</p>	<p>The action will not result in land use activities that have the potential to result in likely significant effects to European Sites. Such resources will provide information that will have the potential to contribute to the positive management of European Sites.</p>
<p>Action 6.3.3 Adapt the DLR County Geodiversity Audit into an accessible book and identify ways to make other DLR audits and surveys accessible to a wider audience.</p>	<p>The action of making the audits and surveys accessible to a larger audience will not result in land use activities that have the potential to result in likely significant effects to European Sites.</p>
<p>Action 6.3.4 Collate/update surveys of historic designed landscape features and built heritage features in open spaces and parks.</p>	<p>Surveying of historic designed landscape features and built heritage features in open spaces and parks will not involve land use activities with the potential to result in likely significant effects to European Sites. Such collation will provide information that will have the potential to contribute to the positive management of European Sites.</p>
<p>Aim 7.1: Light an early spark of interest in heritage and enable strong connections with place from a young age</p>	

<p>Action 7.1.1 Collaborate with national heritage agencies already engaging with school curricula and align DLR heritage programme themes with the History, Geography and SESE curricula of Primary, Junior and Senior history cycles.</p>	<p>Introduction of DLR heritage programme in the school curricula will not involve land use activities with the potential to result in likely significant effects to European Sites. This will provide a structure for better awareness that will in turn have positive impacts for ecosystems within the county, including those occurring within European Sites.</p>
<p>Action 7.1.2 Connect schools with the Heritage in Schools programme and collaborate with the Blackrock Education Centre on teacher surveys, provision of resources for teacher training and activities / tours programming which is relevant and local.</p>	<p>The action will not involve land use activities with the potential to result in likely significant effects to European Sites.</p>
<p>Action 7.1.3 Include a kid’s section on the DLR heritage webpages.</p>	<p>The action will not involve land use activities with the potential to result in likely significant effects to European Sites.</p>
<p>Aim 7.2: Enable life-long learning</p>	
<p>Action 7.2.1 Ensure ongoing plan implementation aligns with the principles of the National Framework for Children and Young People’s Participation in Decision-making (2021)</p>	<p>The action will not involve land use activities with the potential to result in likely significant effects to European Sites.</p>
<p>Action 7.2.2 Ensure heritage engagement programmes and initiatives have multi-generational appeal – explore concept of “tasters”, having a go, trying something new.</p>	<p>The action will not involve land use activities with the potential to result in likely significant effects to European Sites.</p>

<p>Action 7.2.3 Collaborate to develop heritage life-long learning opportunities and provision of digital training for inclusion.</p>	<p>The action will not involve land use activities with the potential to result in likely significant effects to European Sites. This will also contribute to better management of European Sites within the county through knowledge transfer.</p>
<p>Aim 7.3: Enable collaboration and sharing of skills</p>	
<p>Action 7.3.1 Establish a County Heritage Network as a mechanism for sharing news and ideas.</p>	<p>This objective will not involve land use activities with the potential to result in likely significant effects to European Sites.</p>
<p>Action 7.3.2 Facilitate the learning/sharing of traditional skills in relation to built, maritime and natural heritage.</p>	<p>The action will not involve land use activities with the potential to result in likely significant effects to European Sites. This will also contribute to better management of European Sites within the county through knowledge transfer.</p>
<p>Action 7.3.3 Use National Heritage Week to showcase community-led local history research/projects and projects funded by DLR Community Heritage Grant.</p>	<p>The action will not involve land use activities with the potential to result in likely significant effects to European Sites.</p>

4.4 EXAMINATION OF THE PLAN'S POTENTIAL TO RESULT IN NEGATIVE IMPACTS TO EUROPEAN SITES WITHIN 15KM OF THE PLAN AREA

European Sites and their associated qualifying features and associated conservation objectives are likely to be compromised by the plan only where the actions of the plan have the potential to result in land use activities than could result in damage or disturbance to qualifying habitat and qualifying species and the processes that they rely upon to maintain their favourable conservation status. As identified in Section 5.1 above, the Plan will not result in the implementation of land use activities that will have the potential to result in negative impacts to European Sites and their conservation objectives. On the contrary all aims and actions of the

plan have been identified as having the potential to result in neutral to positive implications for European Sites and their conservation status.

The implementation of the Heritage Plan will have the potential to contribute to the future conservation management of European Sites within the county boundary through enhanced public awareness, maintenance of records and knowledge transfer.

4.5 IN-COMBINATION EFFECTS WITH OTHER PLANS & PROJECTS

As part of the Habitats Directive Article 6(3) assessment process consideration must be given to the potential for the Plan to combine with other plans or projects to result in cumulative negative effects to European Sites. The Heritage Plan has been prepared for coordinated heritage management and programming for the next 5 years within DLR. The implementation of the plan will have the potential to result in a positive effect for European Sites within and surrounding the county and will not have the potential to combine with other plans to result in cumulative negative effects to European Sites.

5.0 SCREENING CONCLUSION

The Screening of the DLR Heritage Plan as set out above shows that the plan will not result in land use activities that have the potential to result in negative impacts to the qualifying features of interest of European Sites occurring within or surrounding the plan area and will not have the potential to compromise the achievement of the conservation objective of these European Sites. The examination of the plan has found that the plan will have the potential to contribute to the conservation management of European Sites within and surrounding the plan area and will thus have positive implications for the conservation objectives of these European Site.

In light of the findings of this report it is the considered view of the authors of this Screening Report for Appropriate Assessment that it can be concluded by Dún Laoghaire-Rathdown County Council that the Plan is not likely, alone or in-combination with other plans or projects, to have a significant effect on any European Sites in view of their Conservation Objectives and on the basis of best scientific evidence and there is no reasonable scientific doubt as to that conclusion.

REFERENCES

Department of the Environment Heritage and Local Government (DEHLG) (2010). *Appropriate Assessment of Plans and Projects in Ireland: Guidance for Planning Authorities*. Second Edition, February, 2010.

European Commission (2002). *Assessment of plans and projects significantly affecting Natura 2000 sites. Methodological guidance on the provisions of Article 6(3) and (4) of the Habitats Directive 92/43/EEC*. Luxembourg.

European Commission (2006). *Explanatory Notes and Guidelines for the Assessment, Monitoring and Reporting under Article 17 of the Habitats Directive*. Luxembourg.

OPR (2021). *Appropriate Assessment Screening for Development Management*. OPR Practice Note PN01. Office of the Planning Regulator.