

COMHAIRLE CHONTAE DHÚN LAOGHAIRE-RÁTH AN DÚIN

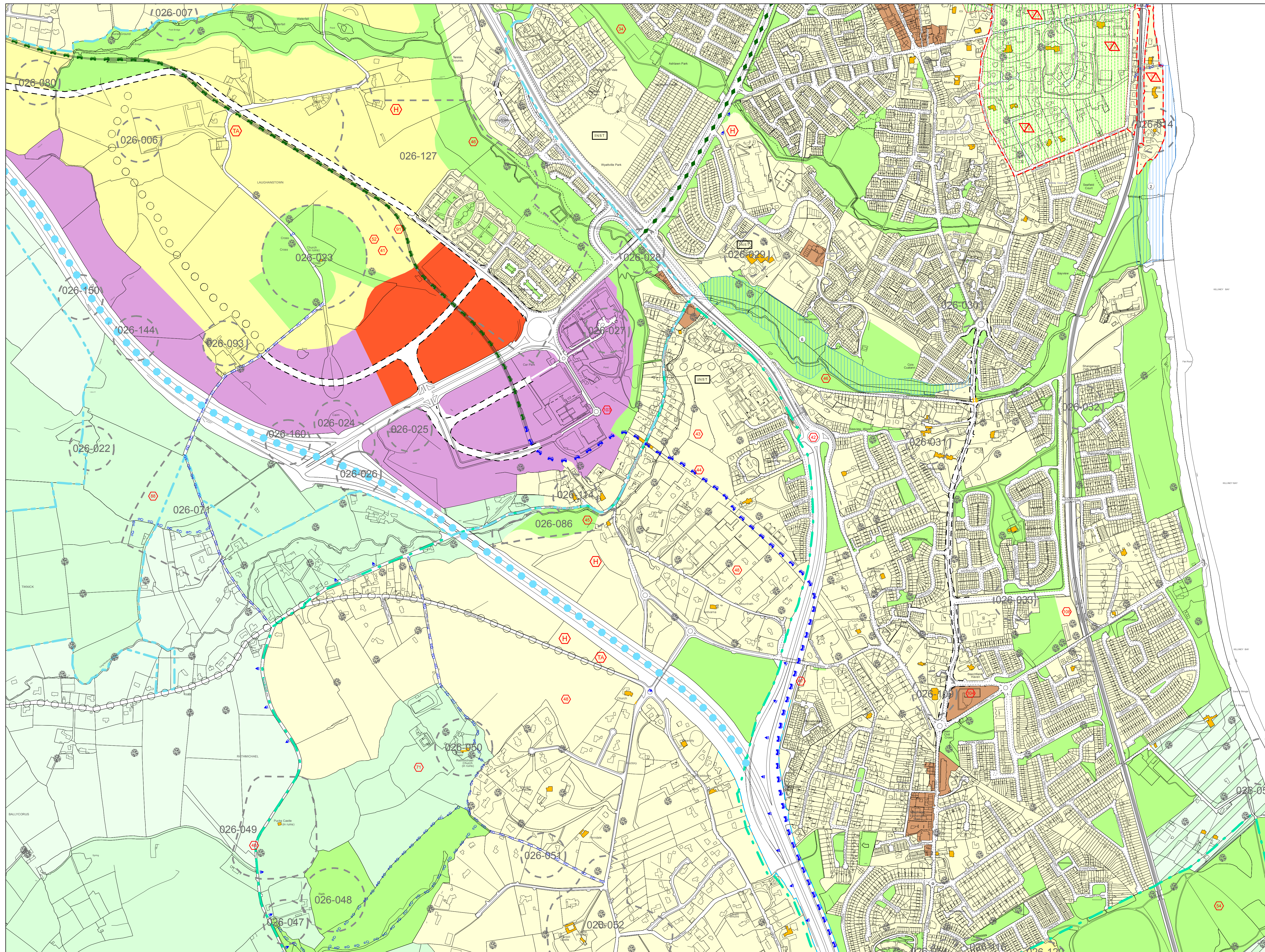
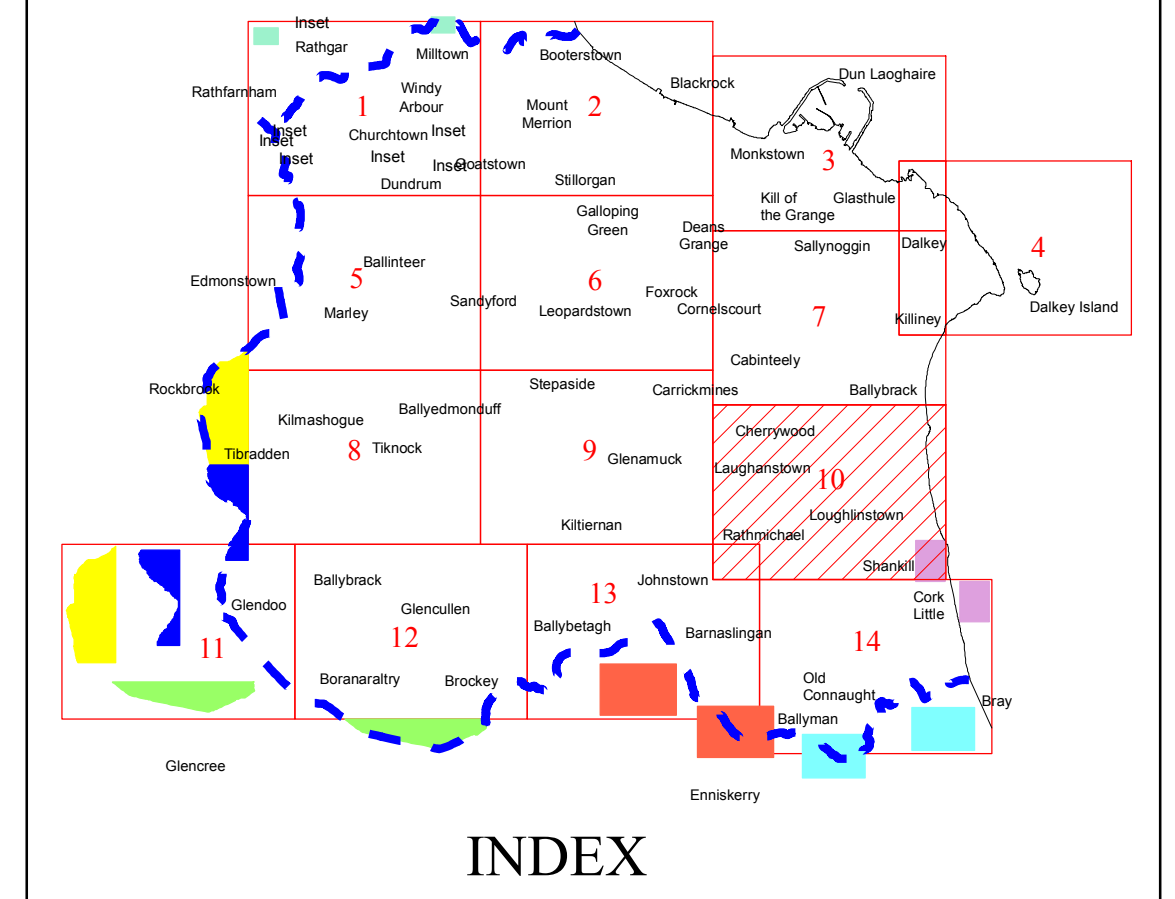
DÚN LAOGHAIRE-RATHDOWN COUNTY COUNCIL

DEVELOPMENT PLAN 2010-2016

(08/04/2010)

Includes Ordnance Survey Ireland data reproduced under Osi Licence number 2012/25CCMA/
Dun Laoghaire-Rathdown County Council
Unauthorised reproduction infringes Ordnance Survey Ireland and Government of Ireland copyright.
© Ordnance Survey Ireland, 2012

INCLUDING VARIATIONS No. 1 (KILLINEY ACA) 14/02/2011 & No. 8 (SPECIFIC LOCAL OBJECTIVE 108) 11/06/2012



USE ZONING OBJECTIVES

- Objective A To protect and/or improve residential amenity.
- Objective A1 To provide for new residential communities in accordance with approved local area plans.
- Objective A2 To provide for the creation of sustainable residential neighbourhoods and preserve and protect residential amenity.
- Objective B To protect and improve rural amenity and to provide for the development of agriculture.
- Objective DC To protect, provide for and/or improve mixed-use district centre facilities.
- Objective E To provide for economic development and employment.
- Objective F To preserve and provide for open space with ancillary active recreational amenities.
- Objective G To protect and improve high amenity areas.
- Objective GB To protect and enhance the open nature of lands between urban areas.
- Objective LW To improve and provide for low density warehousing/light industrial warehousing uses.
- Objective MH To improve, encourage and facilitate the provision and expansion of medical/hospital uses and services.
- Objective MIC To consolidate and complete the development of the mixed use inner core to enhance and reinforce sustainable development.
- Objective MOC To provide for a mix of uses which complements the inner core, but with less retail and residential and more emphasis on employment and services.
- Objective MTC To protect, provide for and/or improve major town centre facilities.
- Objective NC To protect, provide for and/or improve mixed-use neighbourhood centre facilities.
- Objective OE To provide for office and enterprise development.
- Objective TL1 To facilitate, support and enhance the development of third level education institutions.
- Objective W To provide for waterfront development and harbour related uses.

OTHER OBJECTIVES

- 6 Year Road Proposal
- 6 Year Motorway Proposal
- Long Term Road Proposal
- Long Term Motorway Proposal
- Long Term Motorway Proposal (in tunnel)
- Proposed Luas Line (Under Construction)
- Proposed Luas Line Extension
- Proposed Quality Bus/Bus Priority Route
- Public Right-of-Way
- Recreation Access Route
- Wicklow Way
- Proposed Walkway/Cycleway-Sutton to Sandycove (Alignment Indicative Only)
- Proposed Natural Heritage Areas
- Protected Structures
- Record of Monuments and Places (For Areas of Archaeological Potential)
- Architectural Conservation Area
- Candidate Architectural Conservation Area
- Proposed Special Protection Area
- To preserve Views
- To preserve Prospects
- To protect and preserve Trees and Woodlands
- No increase in the number of buildings permissible
- To protect and/or provide for a Burial Ground
- Boundary of lands for which a Proposed Strategic Development Zone (SDZ) or Local Area Plan will be prepared
- Boundary of Urban Framework Plan
- Boundary of Local Area Plan
- Boundary of Objective Area
- Specific Local Objective
- To provide accommodation for the Travelling Community
- County Council Housing Programme Site
- To provide for a Primary School
- To provide for a Post Primary School or other Institution
- To protect and/or provide for Institutional Use in open lands
- Mews Development Acceptable in Principle
- County Boundary

Note:
The lines of the Road Proposals shown on this map are diagrammatic only and are subject to change during the detailed design process.

0 50 100 200 300 400 500 Metres
SCALE 1 : 5000
Director of Planning: K Holohan Senior Planner: D Irvine