

COMHAIRLE CHONTAE DHÚN LAOGHAIRE-RÁTH AN DÚIN

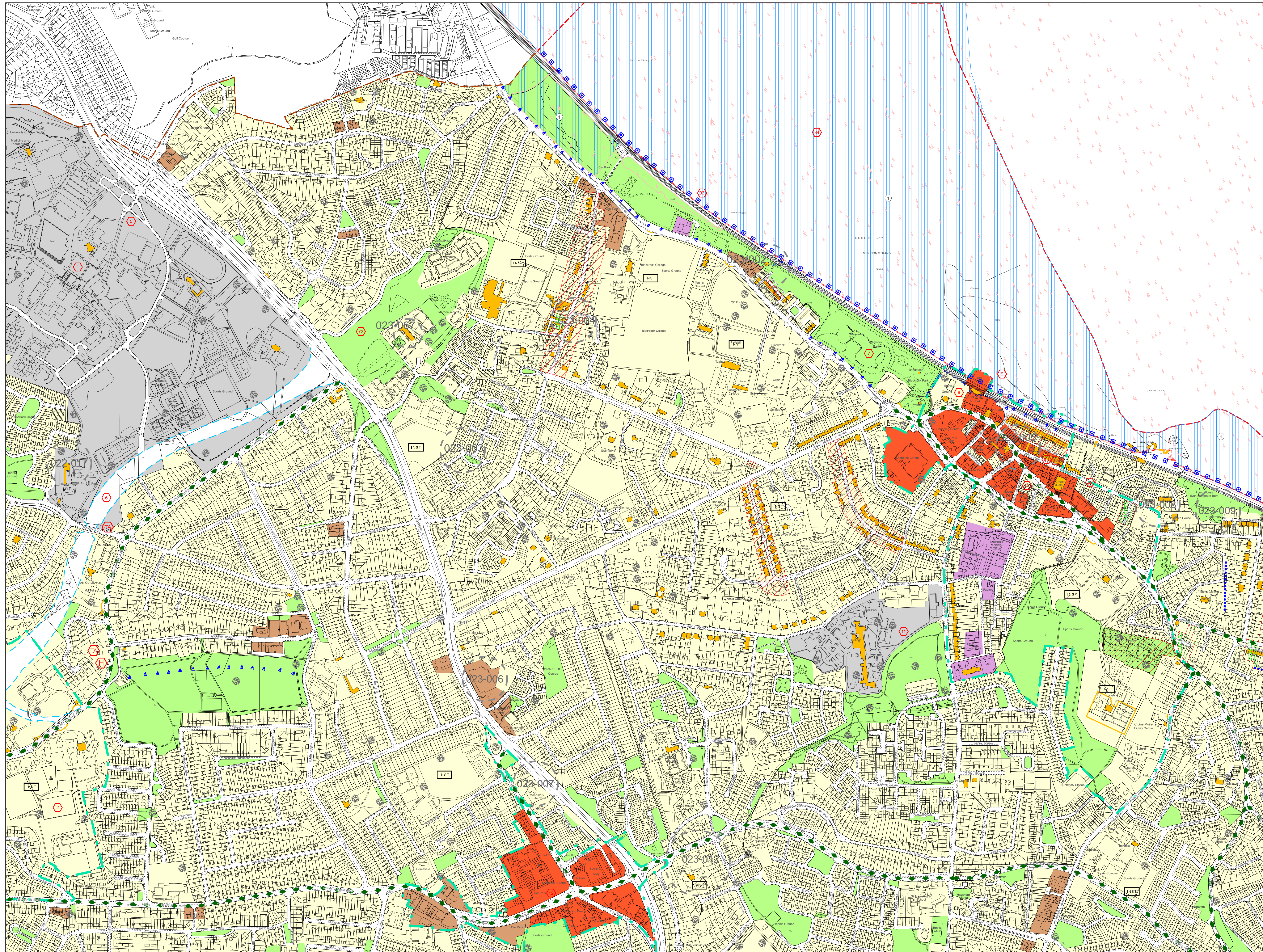
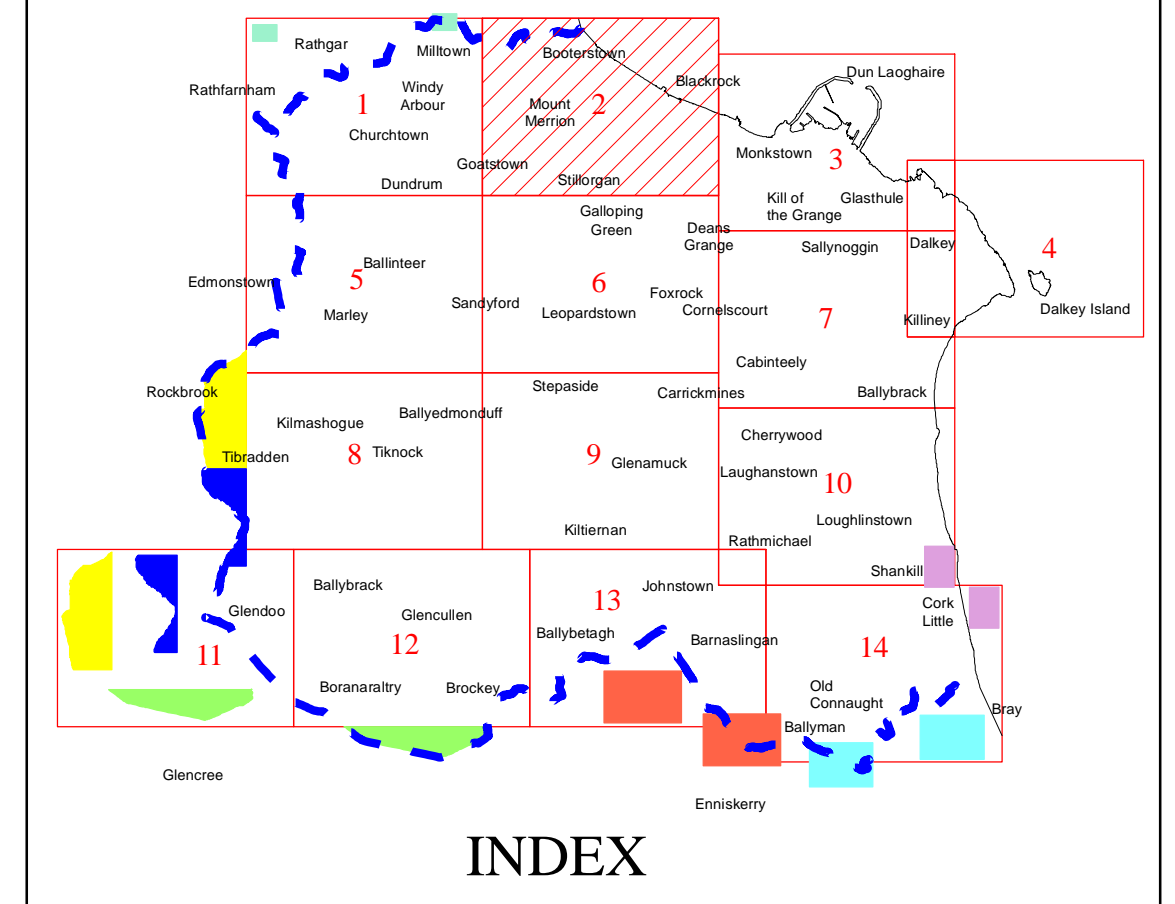
DÚN LAOGHAIRE-RATHDOWN COUNTY COUNCIL

DEVELOPMENT PLAN 2010-2016

(08/04/2010)

Includes Ordnance Survey Ireland data reproduced under OSI Licence Number 2008/10CMA/ with option until 2012/ Dun Laoghaire-Rathdown County Council. Unauthorised reproduction infringes Ordnance Survey Ireland and Government of Ireland copyright. © - Ordnance Survey Ireland, 2008.

INCLUDING VARIATION No.7 (MONKSTOWN ACA) 10/09/2012 & VARIATION No.14 (MONTPELIER PLACE ACA) 13/05/2013, VARIATION No.15 (NEWTOWN VILLAS ACA) 13/05/2013



USE ZONING OBJECTIVES

Objective A	To protect and/or improve residential amenity.	
Objective A1	To provide for new residential communities in accordance with approved local area plans.	
Objective A2	To provide for the creation of sustainable residential neighbourhoods and preserve and protect residential amenity.	
Objective B	To protect and improve rural amenity and to provide for the development of agriculture.	
Objective DC	To protect, provide for and/or improve mixed-use district centre facilities.	
Objective E	To provide for economic development and employment.	
Objective F	To preserve and provide for open space with ancillary active recreational amenities.	
Objective G	To protect and improve high amenity areas.	
Objective GB	To protect and enhance the open nature of lands between urban areas.	
Objective LIW	To improve and provide for low density warehousing/light industrial warehousing uses	
Objective MH	To improve, encourage and facilitate the provision and expansion of medical/hospital uses and services.	
Objective MIC	To consolidate and complete the development of the mixed use inner core to enhance and reinforce sustainable development.	
Objective MOC	To provide for a mix of uses which complements the inner core, but with less retail and residential and more emphasis on employment and services.	
Objective MTC	To protect, provide for and/or improve major town centre facilities.	
Objective NC	To protect, provide for and/or improve mixed-use neighbourhood centre facilities.	
Objective OE	To provide for office and enterprise development.	
Objective TLI	To facilitate, support and enhance the development of third level education institutions.	
Objective W	To provide for waterfront development and harbour related uses.	

OTHER OBJECTIVES

6 Year Road Proposal	
6 Year Motorway Proposal	
Long Term Road Proposal	
Long Term Motorway Proposal	
Long Term Motorway Proposal (in tunnel)	
Proposed Luas Line (Under Construction)	
Proposed Luas Line Extension	
Proposed Quality Bus/Bus Priority Route	
Public Right-of-Way	
Recreation Access Route	
Wicklow Way	
Proposed Walkway-Cycleway-Sutton to Sandycove (Alignment Indicative Only)	
Proposed Natural Heritage Areas	
Protected Structures	
Record of Monuments and Places (For Areas of Archaeological Potential)	
Architectural Conservation Area	
Candidate Architectural Conservation Area	
Proposed Special Protection Area	
To preserve Views	
To preserve Prospects	
To protect and preserve Trees and Woodlands	
No increase in the number of buildings permissible	
To protect and/or provide for a Burial Ground	
Boundary of lands for which a Proposed Strategic Development Zone (SDZ) or Local Area Plan will be prepared	
Boundary of Urban Framework Plan	
Boundary of Local Area Plan	
Boundary of Objective Area	
Specific Local Objective	
To provide accommodation for the Travelling Community	
County Council Housing Programme Site	
To provide for a Primary School	
To provide for a Post Primary School or other Institution	
To protect and/or provide for Institutional Use in open lands	
Mews Development Acceptable in Principle	
County Boundary	

Note:
The lines of the Road Proposals shown on this map are diagrammatic only and are subject to change during the detailed design process.

0 50 100 200 300 400 500 Metres

SCALE 1 : 5000

Director of Planning: K Holohan Senior Planner: D Irvine