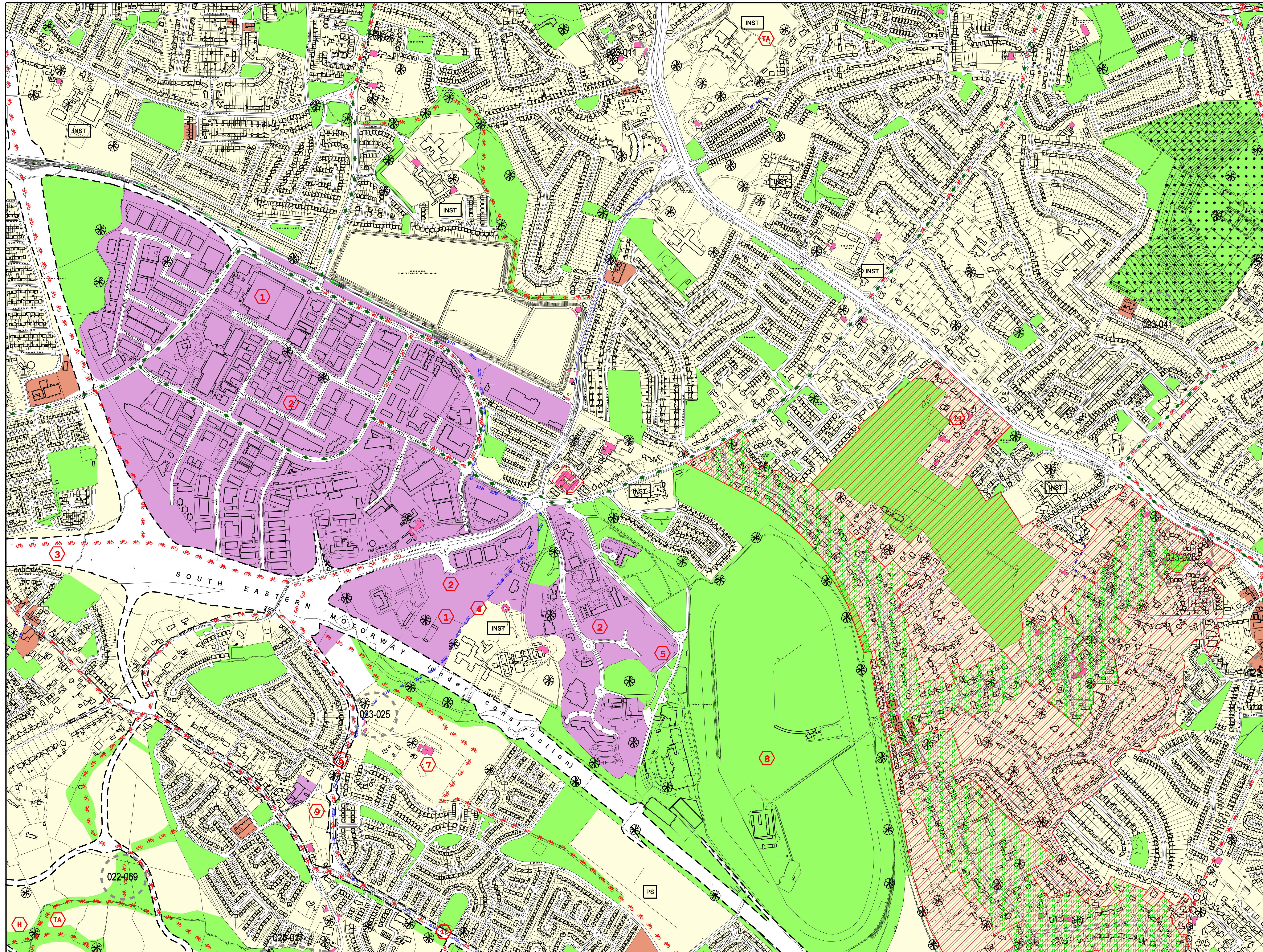
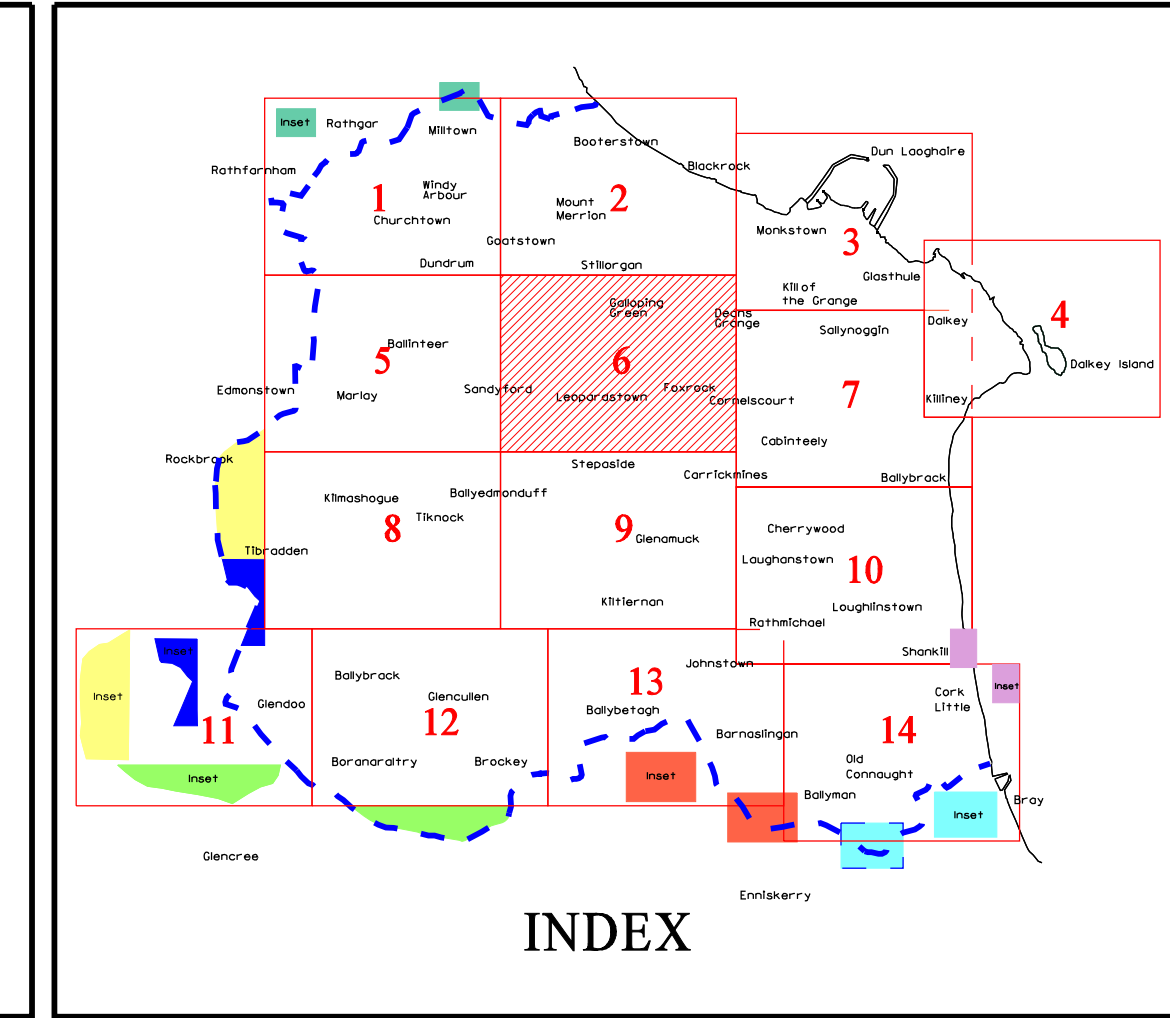


COMHAIRLE CHONTAE DHÚN LAOGHAIRE-RÁTH AN DÚIN
DUN LAOGHAIRE-RATHDOWN COUNTY COUNCIL
DEVELOPMENT PLAN 2004 - 2010
 (20/04/2004)

INCLUDING VARIATION (No.9 Foxrock ACA) 09/07/2007



USE ZONING OBJECTIVES

Objective A	To protect and/or improve residential amenity.	
Objective A1	To provide for new residential communities in accordance with approved local area plans.	
Objective A2	To provide for a special development area.	
Objective B	To protect and improve rural amenity and to provide for the development of agriculture.	
Objective NC	To protect, provide for and / or improve neighbourhood centre facilities.	
Objective DC	To protect, provide for and / or improve district centre facilities.	
Objective MTC	To protect, provide for and/or improve major town centre facilities.	
Objective E	To provide for economic development and employment.	
Objective F	To preserve and provide for open space and recreational amenities.	
Objective G	To protect and improve high amenity areas.	
Objective GB	To protect and enhance the open nature of lands between urban areas.	
Objective W	To provide for waterfront development and harbour related uses.	
Objective J	To protect and improve coastal amenities.	

OTHER OBJECTIVES

Road Proposals - Long Term	
6 Year Road/Motorway Proposal	
6 Year Motorway Proposal (in tunnel)	
Proposed Luas Line (under construction)	
Proposed Luas Line Extension	
Proposed Cycle Route Objectives	
Proposed Quality Bus/Bus Priority Route	
Public Right-of-Way	
Wicklow Way	
Proposed Walkway/Cycleway (Sutton to Sandycove)	
Proposed Natural Heritage Areas	
Protected Structures	
Sites of Archaeological Interest (showing Department of Environment, Heritage, & Local Government Reference Numbers)	
Conservation Areas	
Architectural Conservation Areas	
To preserve Views	
To preserve Prospects	
To provide an Amenity Lay-by	
To provide for Car Parking	
To protect and preserve Trees and Woodlands	
Area Subject to Section 49 Supplementary Development Contribution Scheme	
To protect and / or provide for a Burial Ground	
Objective Boundary	
Specific Local Objective	
To provide accommodation for the Travelling Community	
County Council Housing Programme Site	
No increase in the number of buildings permissible	
To provide for a Primary School	
To provide for a Post Primary School or other Institution	
To protect and / or provide for Institutional Use in open lands	
Mews Development Acceptable in Principle	
County Boundary	

Note: The lines of the Road Proposals shown on this map are diagrammatic only and are subject to change during the detailed design process.

SCALE 1 : 5000

Director: M.Gough, M.A., M.Sc., Dip.T.P., M.I.P.L., M.R.T.P.I.
 Senior Planner: R.Cremis, Dip. Env. Ec., M.I.P.L.

6