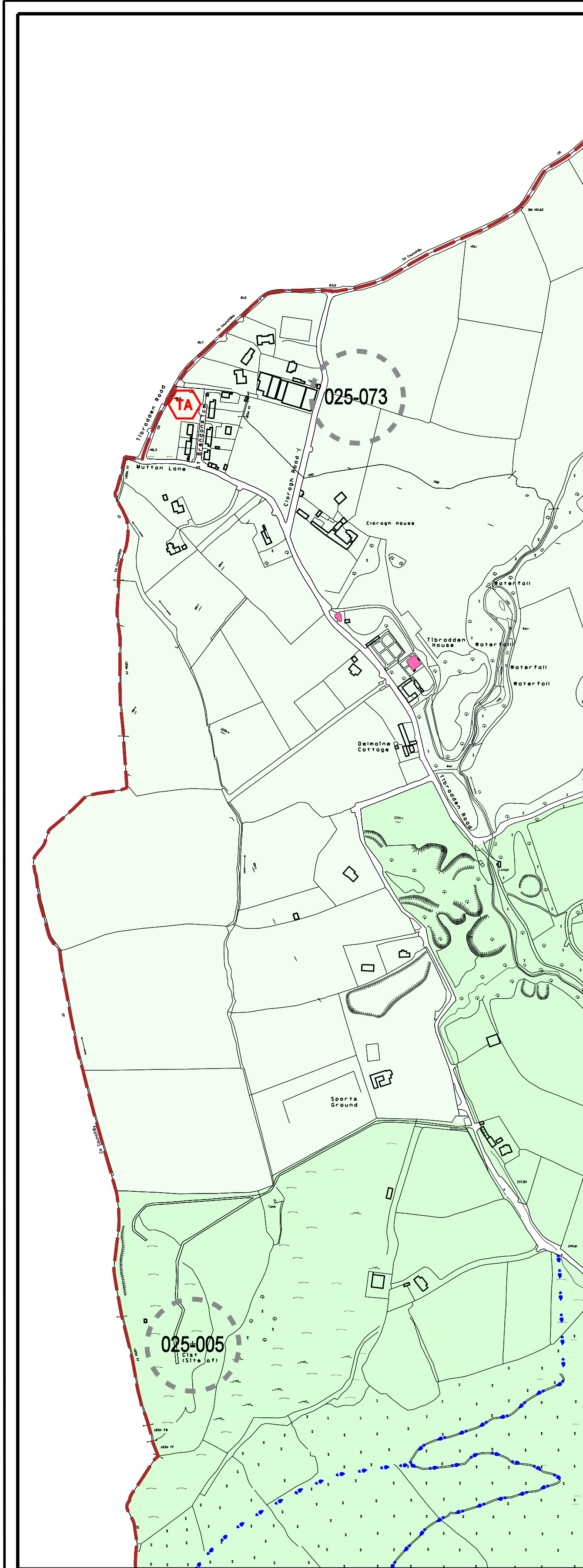
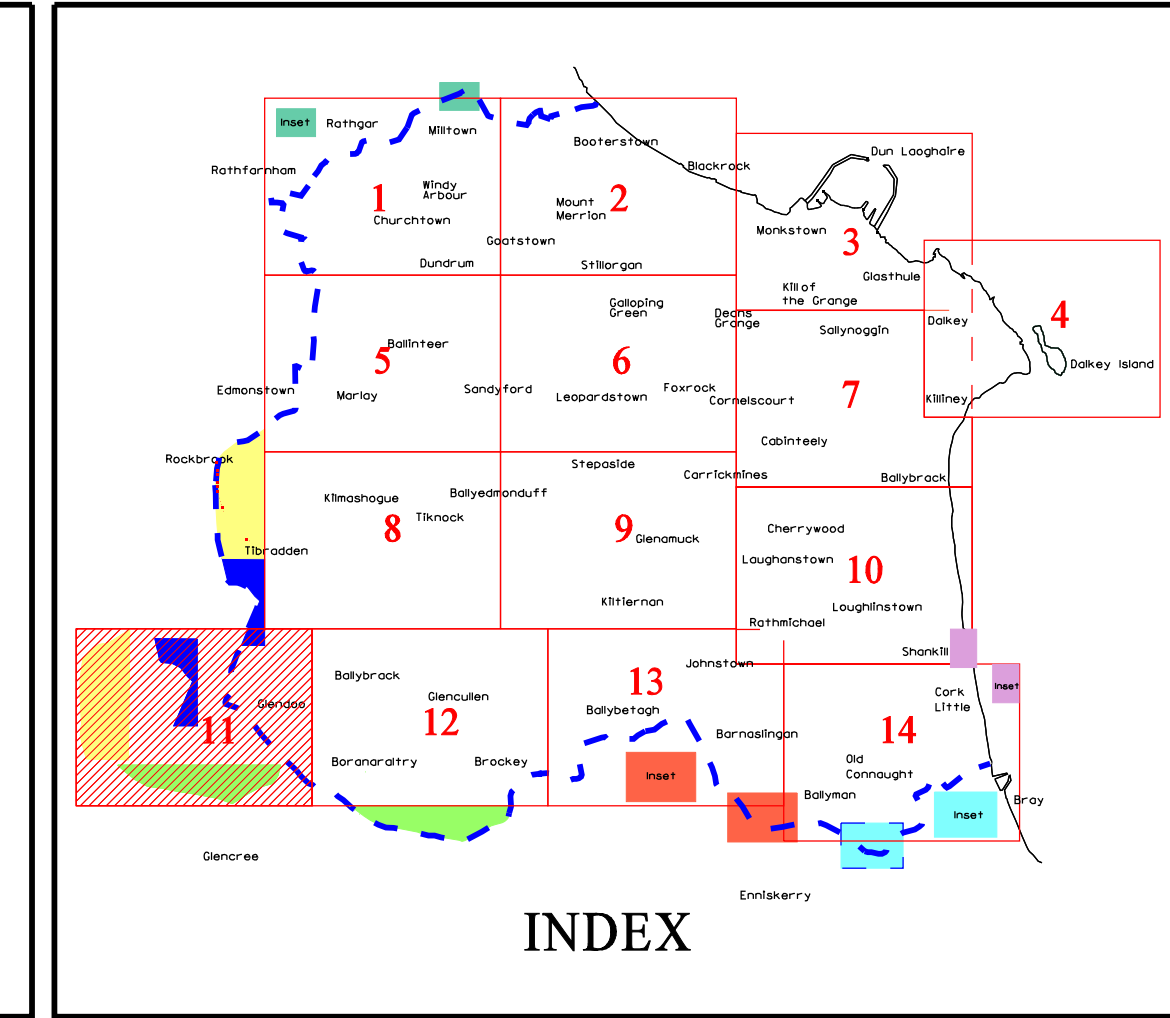
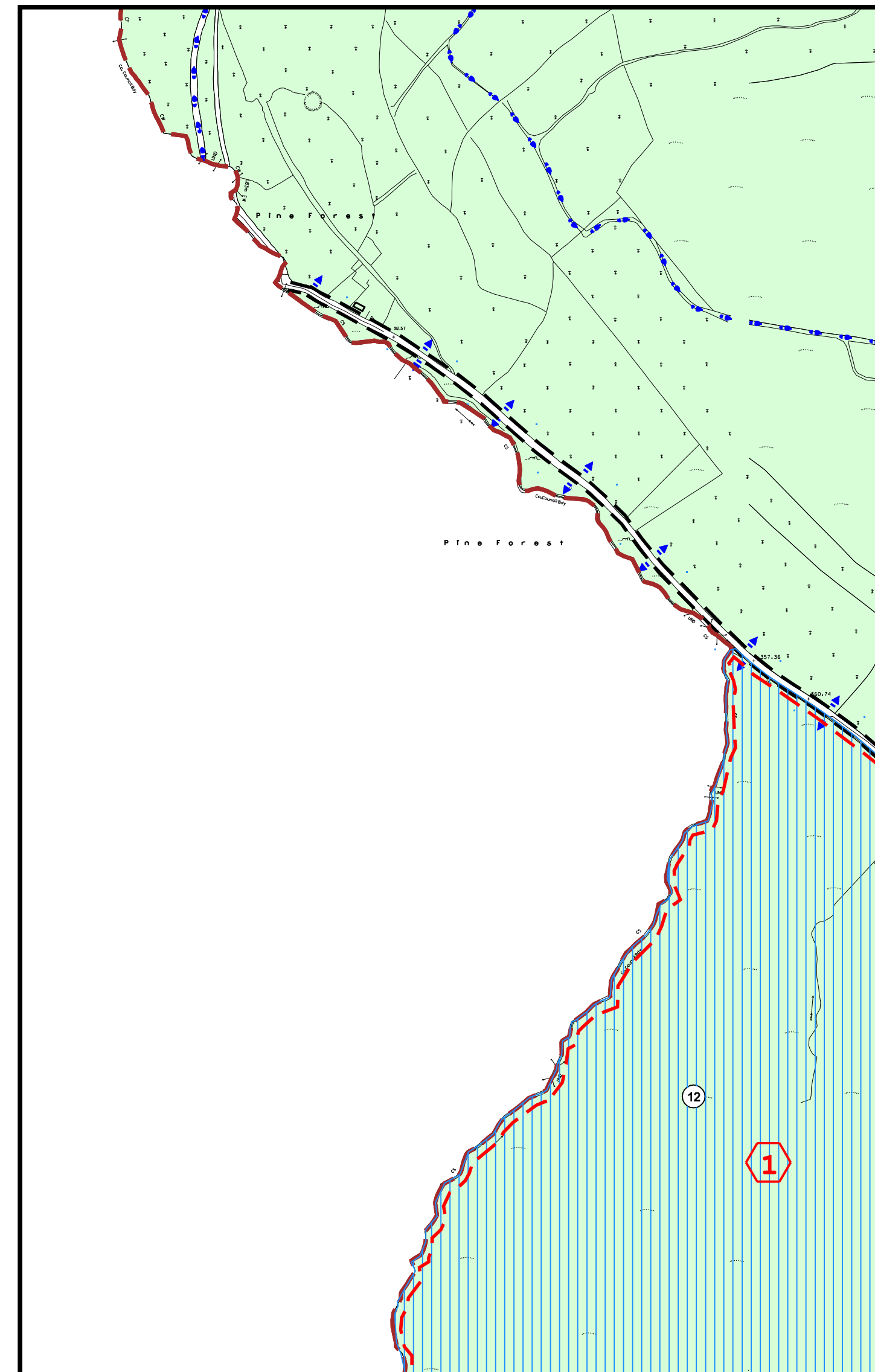


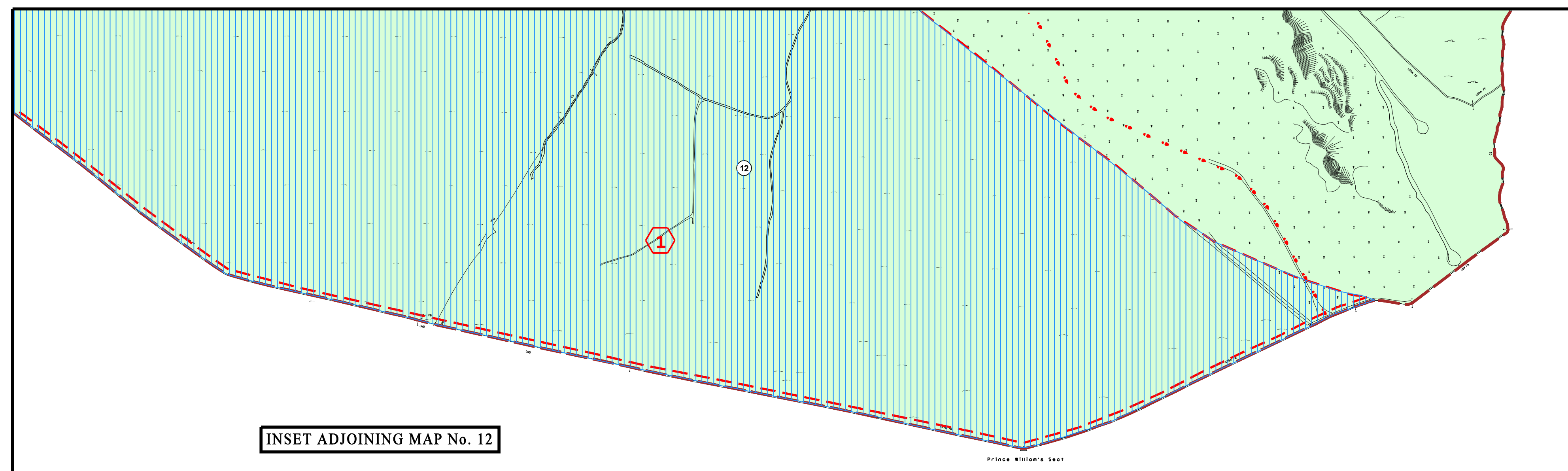
COMHAIRLE CHONTAE DHÚN LAOGHAIRE-RÁTH AN DÚIN
DUN LAOGHAIRE-RATHDOWN COUNTY COUNCIL
DEVELOPMENT PLAN 2004 - 2010
 (20/04/2004)



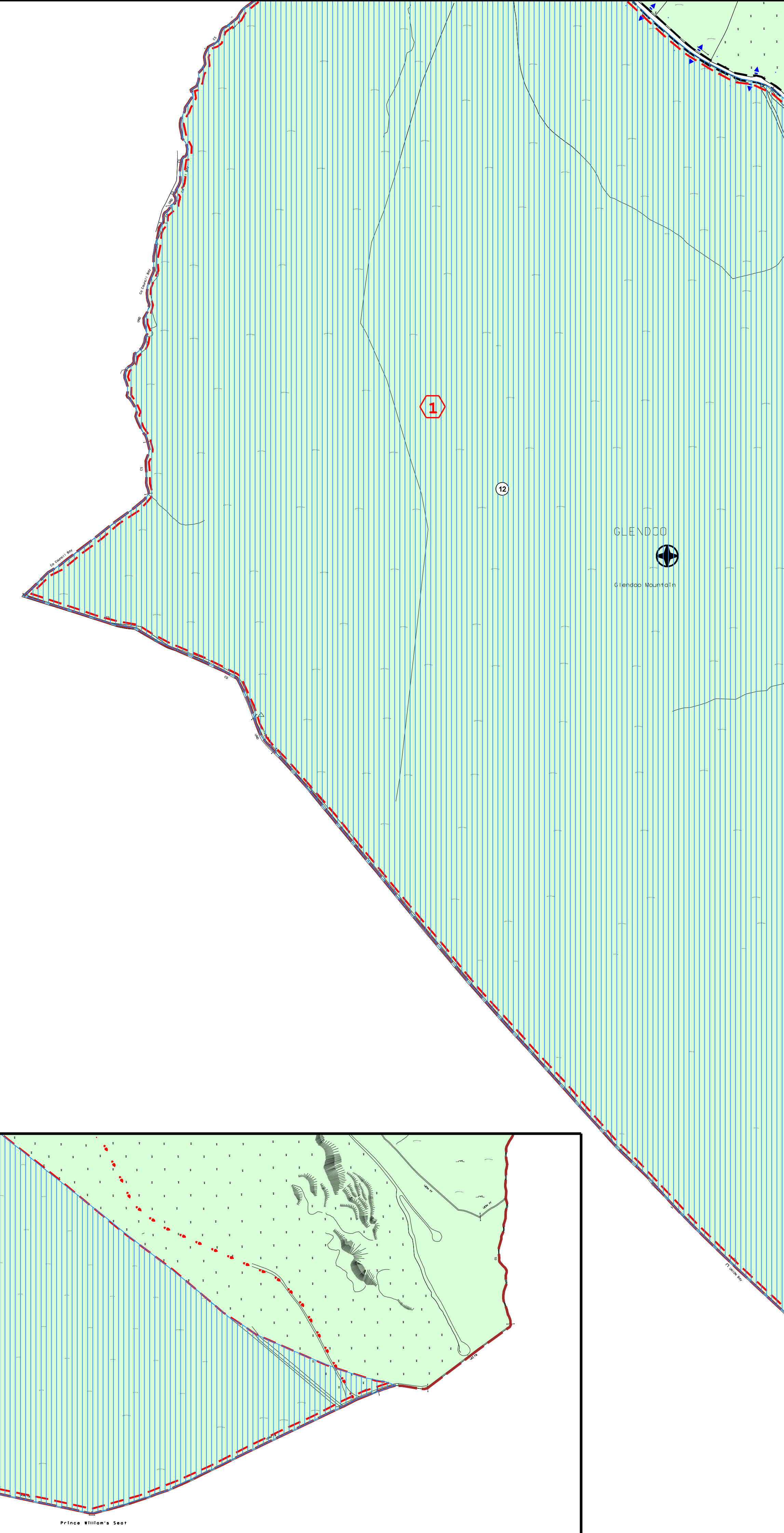
INSET ADJOINING MAP Nos. 5 & 8



INSET ADJOINING MAP No. 8



INSET ADJOINING MAP No. 12



USE ZONING OBJECTIVES

Objective A	To protect and/or improve residential amenity.	[Yellow box]
Objective A1	To provide for new residential communities in accordance with approved local area plans.	[Light yellow box]
Objective A2	To provide for a special development area.	[Orange box]
Objective B	To protect and improve rural amenity and to provide for the development of agriculture.	[Light green box]
Objective NC	To protect, provide for and / or improve neighbourhood centre facilities.	[Orange box]
Objective DC	To protect, provide for and / or improve district centre facilities.	[Red box]
Objective MTC	To protect, provide for and/or improve major town centre facilities.	[Cyan box]
Objective E	To provide for economic development and employment.	[Purple box]
Objective F	To preserve and provide for open space and recreational amenities.	[Light green box]
Objective G	To protect and improve high amenity areas.	[Light green box]
Objective GB	To protect and enhance the open nature of lands between urban areas.	[Green box with diagonal lines]
Objective W	To provide for waterfront development and harbour related uses.	[Green box]
Objective J	To protect and improve coastal amenities.	[Light blue box]

OTHER OBJECTIVES

Road Proposals - Long Term	[Dashed line]
6 Year Road/Motorway Proposal	[Dashed line]
6 Year Motorway Proposal (in tunnel)	[Dashed line]
Proposed Luas Line (under construction)	[Dashed line]
Proposed Luas Line Extension	[Dashed line]
Proposed Cycle Route Objectives	[Dashed line]
Proposed Quality Bus/Bus Priority Route	[Dashed line]
Public Right-of-Way	[Dashed line]
Wicklow Way	[Dashed line]
Proposed Walkway/Cycleway (Sutton to Sandycove)	[Dashed line]
Proposed Natural Heritage Areas	[Dashed line]
Protected Structures	[Dashed line]
Sites of Archaeological Interest (showing Department of Environment, Heritage, & Local Government Reference Numbers)	[Dashed line]
Conservation Areas	[Dashed line]
Architectural Conservation Areas	[Dashed line]
To preserve Views	[Dashed line]
To preserve Prospects	[Dashed line]
To provide an Amenity Lay-by	[Dashed line]
To provide for Car Parking	[Dashed line]
To protect and preserve Trees and Woodlands	[Dashed line]
Area Subject to Section 49 Supplementary Development Contribution Scheme	[Dashed line]
To protect and / or provide for a Burial Ground	[Dashed line]
Objective Boundary	[Dashed line]
Specific Local Objective	[Dashed line]
To provide accommodation for the Travelling Community	[Dashed line]
County Council Housing Programme Site	[Dashed line]
No increase in the number of buildings permissible	[Dashed line]
To provide for a Primary School	[Dashed line]
To provide for a Post Primary School or other Institution	[Dashed line]
To protect and / or provide for Institutional Use in open lands	[Dashed line]
Mews Development Acceptable in Principle	[Dashed line]
County Boundary	[Dashed line]

Note:
 The lines of the Road Proposals shown on this map are diagrammatic only and are subject to change during the detailed design process.

SCALE 1 : 5000

Director: M.Gough, M.A., M.Sc., Dip.T.P., M.I.P.I., M.R.T.P.I.
 Senior Planner: R.Cremis, Dip.Env.Ec., M.I.P.I.