

**IRONMAN DUBLIN**  
14/08/2016

**DESIGN PARAMETERS**

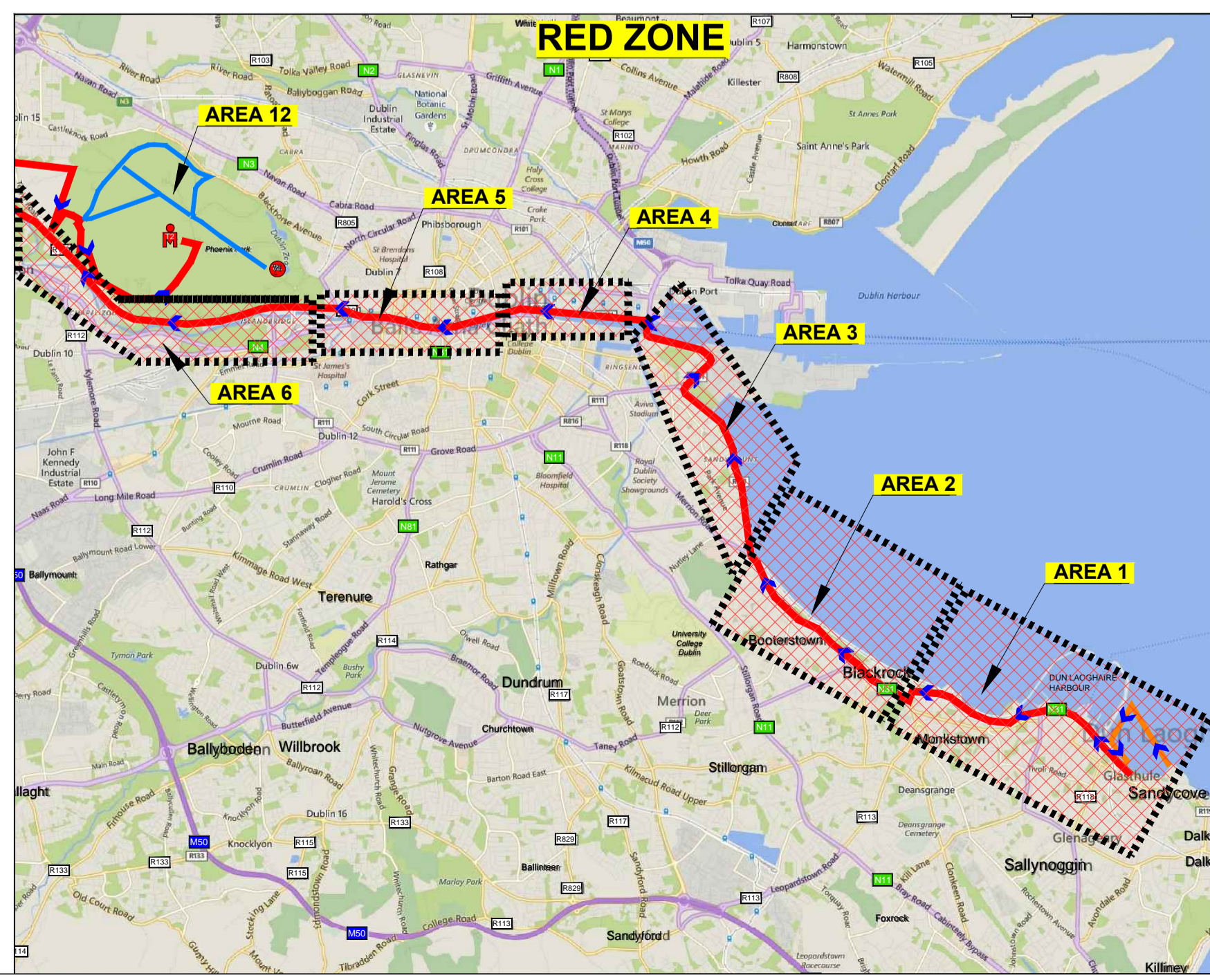
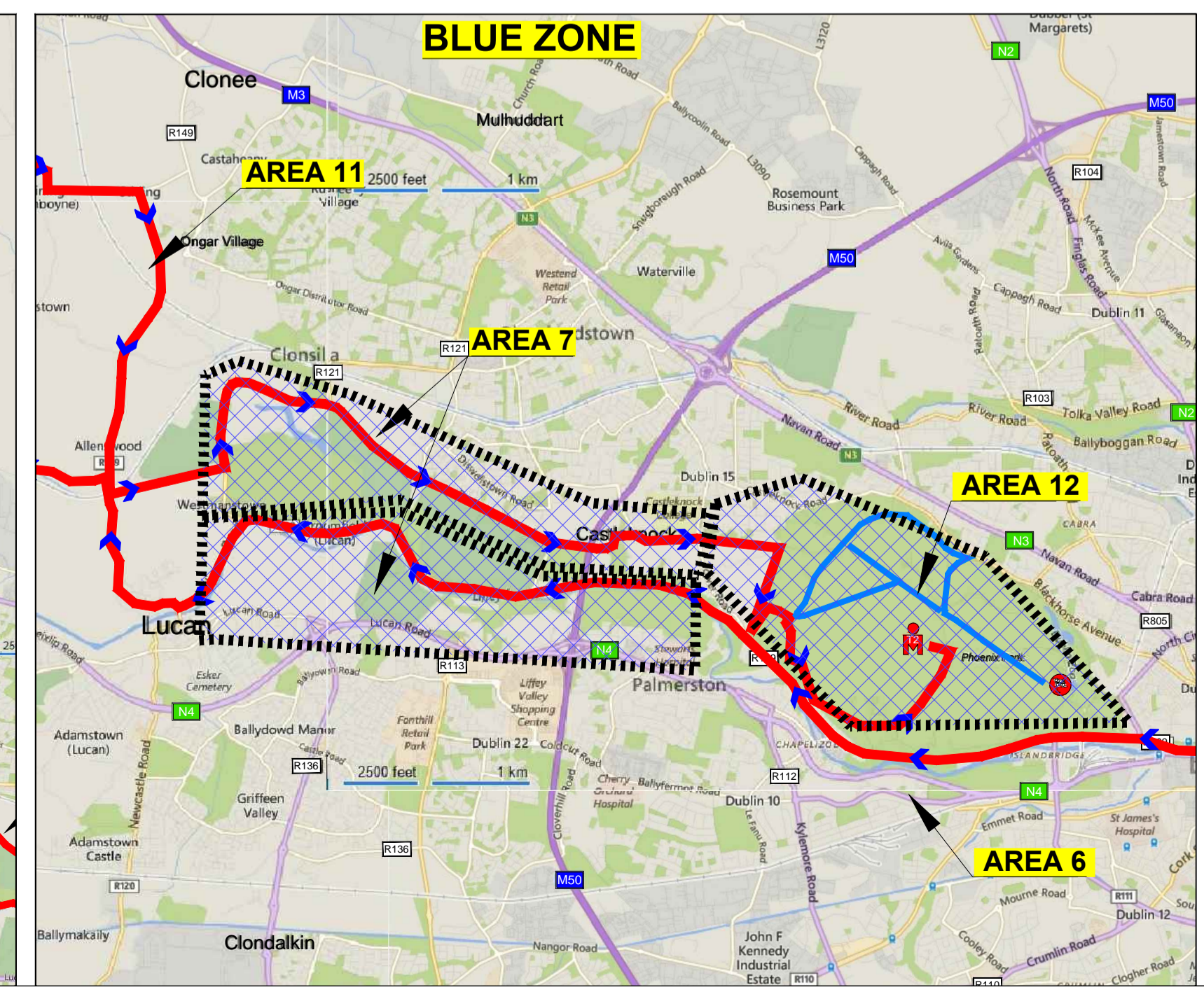
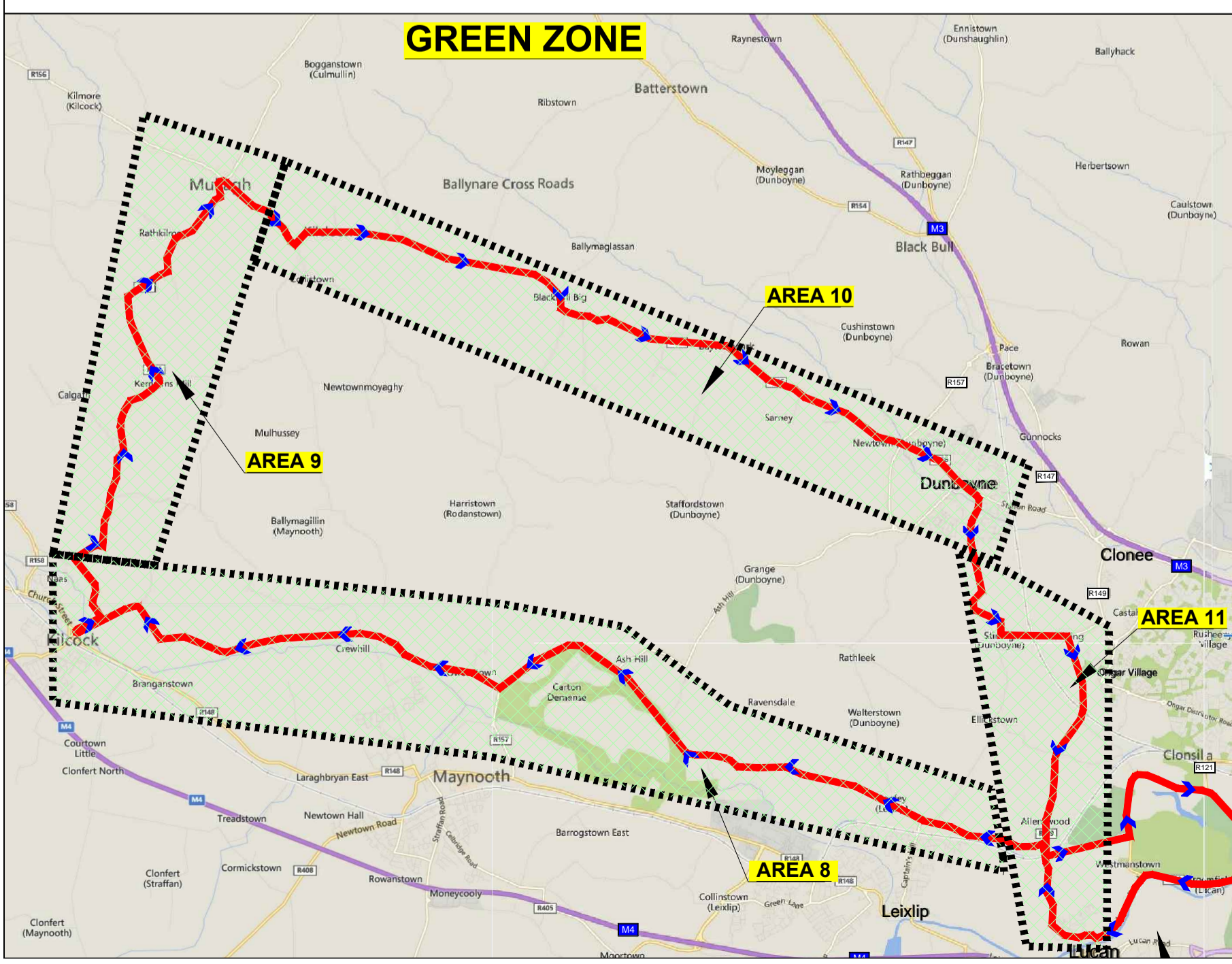
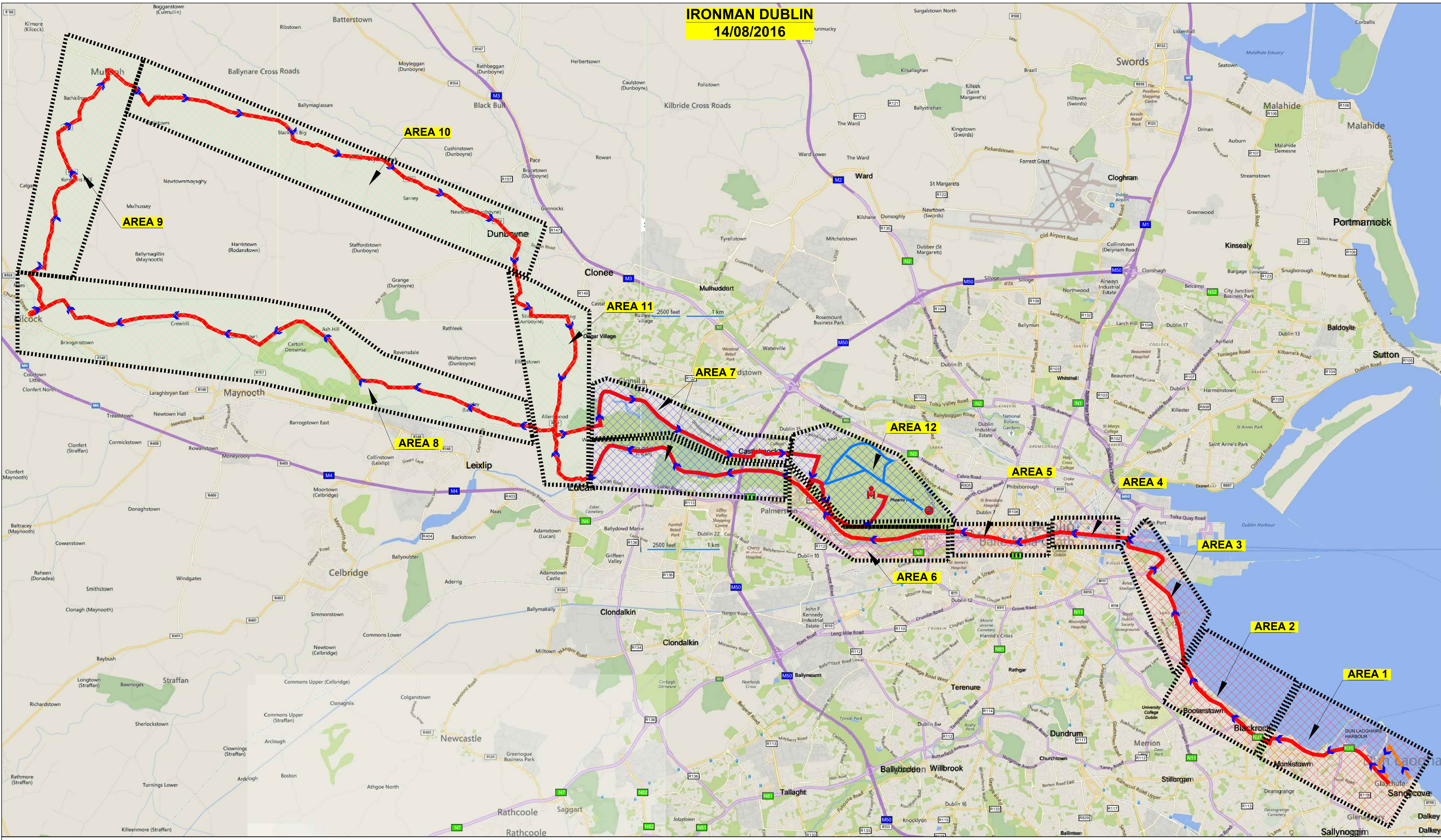
| ROAD LEVEL:           | LEVEL 2   | LEVEL 3&4  | LEVEL 5       |
|-----------------------|-----------|------------|---------------|
| SPEED LIMIT:          | 50/60km/h | 80/100km/h | 60km/h 80km/h |
| SIGN VISIBILITY:      | 50m       | 120m       | 50m 90m       |
| ADVANCE SIGN SPACING: | 25m       | 200m       | 200m 200m     |
| MIN LANE WIDTH:       | 3.00m     | 3.00m      | 3.25m 3.25m   |

**GENERAL NOTES**

- 1) ALL WORKS TO BE CARRIED OUT IN ACCORDANCE WITH LOCAL AUTHORITY REQUIREMENTS AND ARE TO BE INCLUDED IN THE EVENT PLAN
- 2) THIS TRAFFIC MANAGEMENT PLAN MAY ONLY BE IMPLEMENTED BY A TEMPORARY TRAFFIC OPERATIONS SUPERVISOR WHO MUST CARRY OUT A SITE RISK ASSESSMENT TO MODIFY THE MEASURES DESCRIBED TO SUIT ACTUAL SITE CONDITIONS BEFORE IMPLEMENTATION.
- 3) THE TEMPORARY TRAFFIC OPERATIONS SUPERVISOR MUST BE IN POSSESSION OF THE VALID CONSTRUCTION SKILLS REGISTRATION CARD 'SIGNING, LIGHTING, AND GUARDING AT ROADWORKS' CONSTRUCTION REGULATIONS 2006.
- 4) SITE INSPECTIONS AND MAINTENANCE OF THE TEMPORARY TRAFFIC MANAGEMENT LAYOUT IS TO BE CONDUCTED ON A DAILY BASIS TO ENSURE THE SAFETY AND INTEGRITY OF THE DESIGN
- 5) CONTRACTOR TO CARRY OUT A SITE RISK ASSESSMENT PRIOR TO THE INSTALLATION OF THE TRAFFIC MANAGEMENT PLAN TO ENSURE THAT CONDITIONS REFLECT THOSE CONSIDERED FOR DESIGN POST SUBMISSION.
- 5) ALL SIGNS USED MUST CONFORM TO THOSE SPECIFIED IN THE TRAFFIC MANAGEMENT PLAN SO FAR AS THEY ALSO CONFORM TO THE TS4 REGULATIONS (APRIL 2001).

**LEGEND**

- BIKE COURSE
- SWIM COURSE
- RUN COURSE
- RUN FIRST LAP ONLY
- RUN LAST LAP ONLY
- FINNISH LINE
- SWIM START
- SWIM EXIT
- BIKE START
- TRANSITION 1
- TRANSITION 2
- Red Zone/Areas 1-6
- Blue Zone/Areas 7A,7B & 12
- Green Zone/Areas 8 - 11



**CHM Group**  
COMPLETE HIGHWAY MAINTENANCE  
Lower Ballymount Rd  
Walkinstown  
Dublin 12  
Ireland  
Tel: (01) 424 2070  
Fax: (01) 450 0144  
Email: info@chm.ie  
Web: www.chm.ie

| REV | DESCRIPTION                     | DATE     | REV BY | CHK BY |
|-----|---------------------------------|----------|--------|--------|
| 3   | Revised overall map details     | 02.08.16 | IG     | DH     |
| 2   | Revised overall map details     | 21.07.16 | IG     | DH     |
| 1   | Revised overall map and details | 26.04.16 | IG     | DH     |

**IRONMAN 70.3 DUBLIN**

Project: IRONMAN 2016  
Title: Traffic Management Plan  
Event Overall Map

|                             |                |                 |              |             |
|-----------------------------|----------------|-----------------|--------------|-------------|
| Scale: AS SHOWN@A1          | Date: 09.03.16 | Project Man: DH | Drawn by: IG | Checked: BB |
| DRAWING No: EN 4149-000-001 |                |                 |              | REV: 3      |