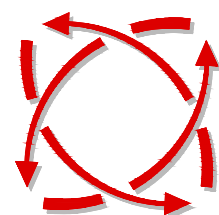


***PROPOSED TRAFFIC
MANAGEMENT PLAN***

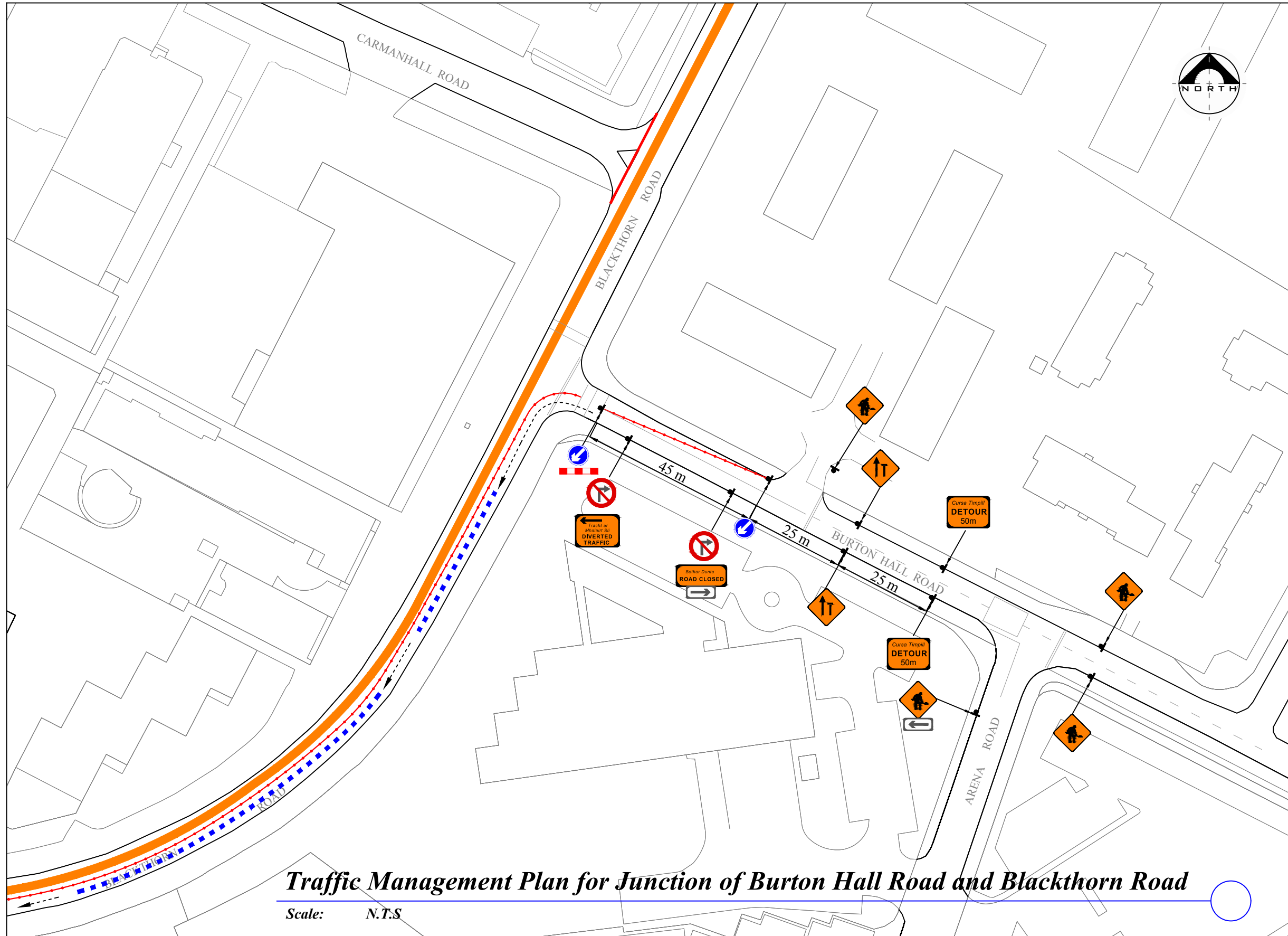
for

***Twilight Team Challenge
at Sandyford Business District***

Thursday 29th September 2016



***FREEFLOW
TRAFFIC
MANAGEMENT***



Traffic Management Plan for Junction of Burton Hall Road and Blackthorn Road

Scale: N.T.S

LEGEND

- Sign Location
- Approved Pedestrian Barrier
- Traffic Cones
- Race Route
- Traffic Flow
- Diversion Route

Design Parameters:

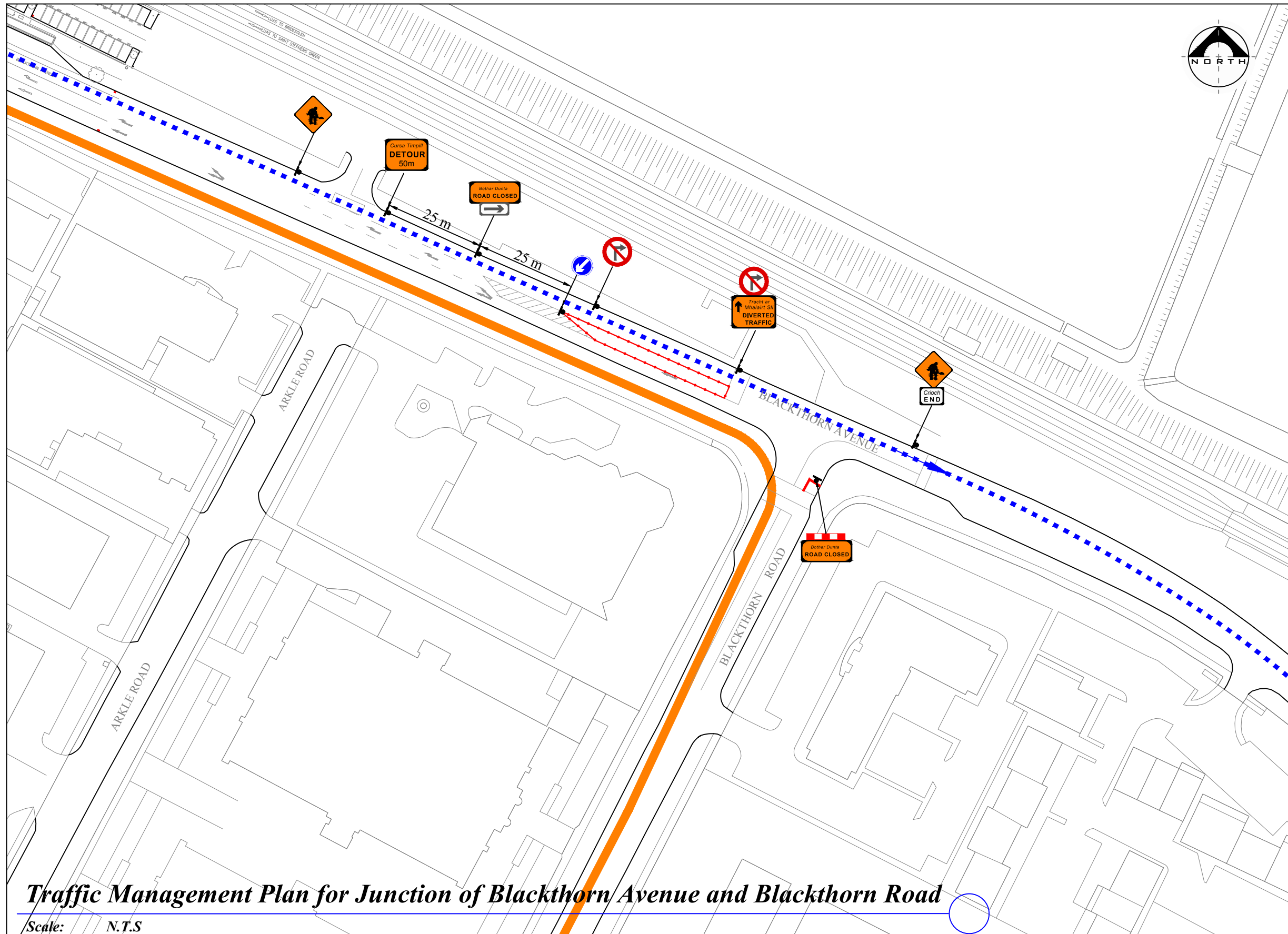
1. Statutory Speed of the Road - 50km/h
2. Distance between Advance Signs: 25m
3. Number of Advance Signs: 3/No
4. Minimum Visibility of Signs: 50m
5. Longitudinal Safety Zone: 25m
6. Lateral Safety Zone: 0.5m
7. Leading Taper: 1 in 15m
8. Maximum at Tapers Cone Space: 3m
9. Maximum Longitudinal Cone Space: 6m

Note:

1. All signs to comply with Chapter 8 of the "Traffic Signs Manual"-Guidance Document.
2. Exact sign positions to be agreed on site.
3. All safety zones to be maintained at all times.
4. All affected Parties and An Garda Síochána to be notified prior to works commencing.
5. Signs to be positioned so as not to cause an obstruction to other road users.
6. Minimum lane width of 3.25 m to be maintained at all times.
7. All signs to be 600 X 600 mm and faced with retro-reflective material to class ref 2 of EN 12899.
8. All delineation devices should be designed in accordance with IS EN 13422.
9. All signage to be as per table 8.2.4 of the "Traffic Signs Manual" - Guidance Document.
10. Safety barrier to be in accordance with IS EN 1317.
11. "End of Roadworks" sign placed 20m to 50m from end of works area.
12. Installation, operation, maintenance and removal of traffic management measures should be carried out in accordance with "Traffic Signs Manual Chapter 8"
13. Road closure to be manned at all times by Garda / Stewards.
14. Local Access to be maintained.



Rev:	Description:	Date:	Job Details:	Drawing:	Dwg no:
			Twilight Team Challenge at Sandford Business District Thursday 29th September 2016	Traffic Management Plan for Junction of Burton Hall Road and Blackthorn Road	01
			Sheet:	Drawn By:	Rev:
			CAD File ref.:	AK	
				Date:	Scale:
				September 2016	As Shown



LEGEND

- Sign Location
- Approved Pedestrian Barrier
- Traffic Cones
- Race Route
- Traffic Flow
- Diversion Route

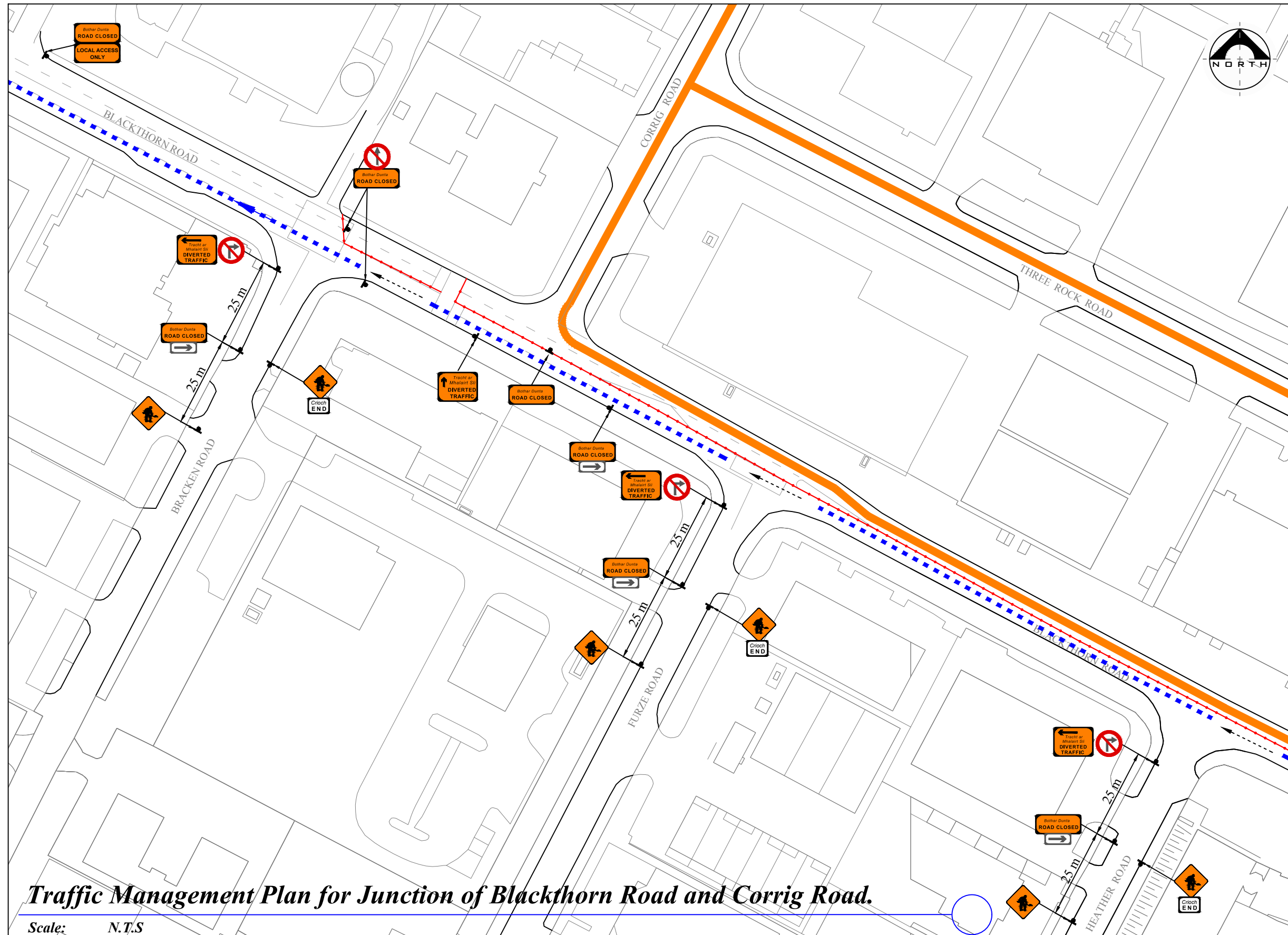
- Design Parameters:**
1. Statutory Speed of the Road - 50km/h
 2. Distance between Advance Signs: 25m
 3. Number of Advance Signs: 3/No
 4. Minimum Visibility of Signs: 50m
 5. Longitudinal Safety Zone: 25m
 6. Lateral Safety Zone: 0.5m
 7. Leading Taper: 1 in 15m
 8. Maximum at Tapers Cone Space: 3m
 9. Maximum Longitudinal Cone Space: 6m

- Note:**
1. All signs to comply with Chapter 8 of the "Traffic Signs Manual"-Guidance Document.
 2. Exact sign positions to be agreed on site.
 3. All safety zones to be maintained at all times.
 4. All affected Parties and An Garda Síochána to be notified prior to works commencing.
 5. Signs to be positioned so as not to cause an obstruction to other road users.
 6. Minimum lane width of 3.25 m to be maintained at all times.
 7. All signs to be 600 X 600 mm and faced with retro-reflective material to class ref 2 of EN 12899.
 8. All delineation devices should be designed in accordance with IS EN 13422.
 9. All signage to be as per table 8.2.4 of the "Traffic Signs Manual" - Guidance Document.
 10. Safety barrier to be in accordance with IS EN 1317.
 11. "End of Roadworks" sign placed 20m to 50m from end of works area.
 12. Installation, operation, maintenance and removal of traffic management measures should be carried out in accordance with "Traffic Signs Manual Chapter 8"
 13. Road closure to be manned at all times by Garda / Stewards.
 14. Local Access to be maintained.

Traffic Management Plan for Junction of Blackthorn Avenue and Blackthorn Road

Scale: N.T.S

<p>FREEFLOW TRAFFIC MANAGEMENT</p>	Rev:	Description:	Date:	Job Details:	Drawing:	Dwg no:
				Twilight Team Challenge at Sandford Business District Thursday 29th September 2016	Traffic Management Plan for Junction of Blackthorn Avenue and Blackthorn Road	02
				Sheet:	CAD File ref.:	Rev:
						Scale:
				Drawn By:	Date:	As Shown
				AK	September 2016	



LEGEND

- Sign Location
- Approved Pedestrian Barrier
- Traffic Cones
- Race Route
- Traffic Flow
- Diversion Route

- Design Parameters:**
1. Statutory Speed of the Road - 50km/h
 2. Distance between Advance Signs: 25m
 3. Number of Advance Signs: 3/No
 4. Minimum Visibility of Signs: 50m
 5. Longitudinal Safety Zone: 25m
 6. Lateral Safety Zone: 0.5m
 7. Leading Taper: 1 in 15m
 8. Maximum at Tapers Cone Space: 3m
 9. Maximum Longitudinal Cone Space: 6m

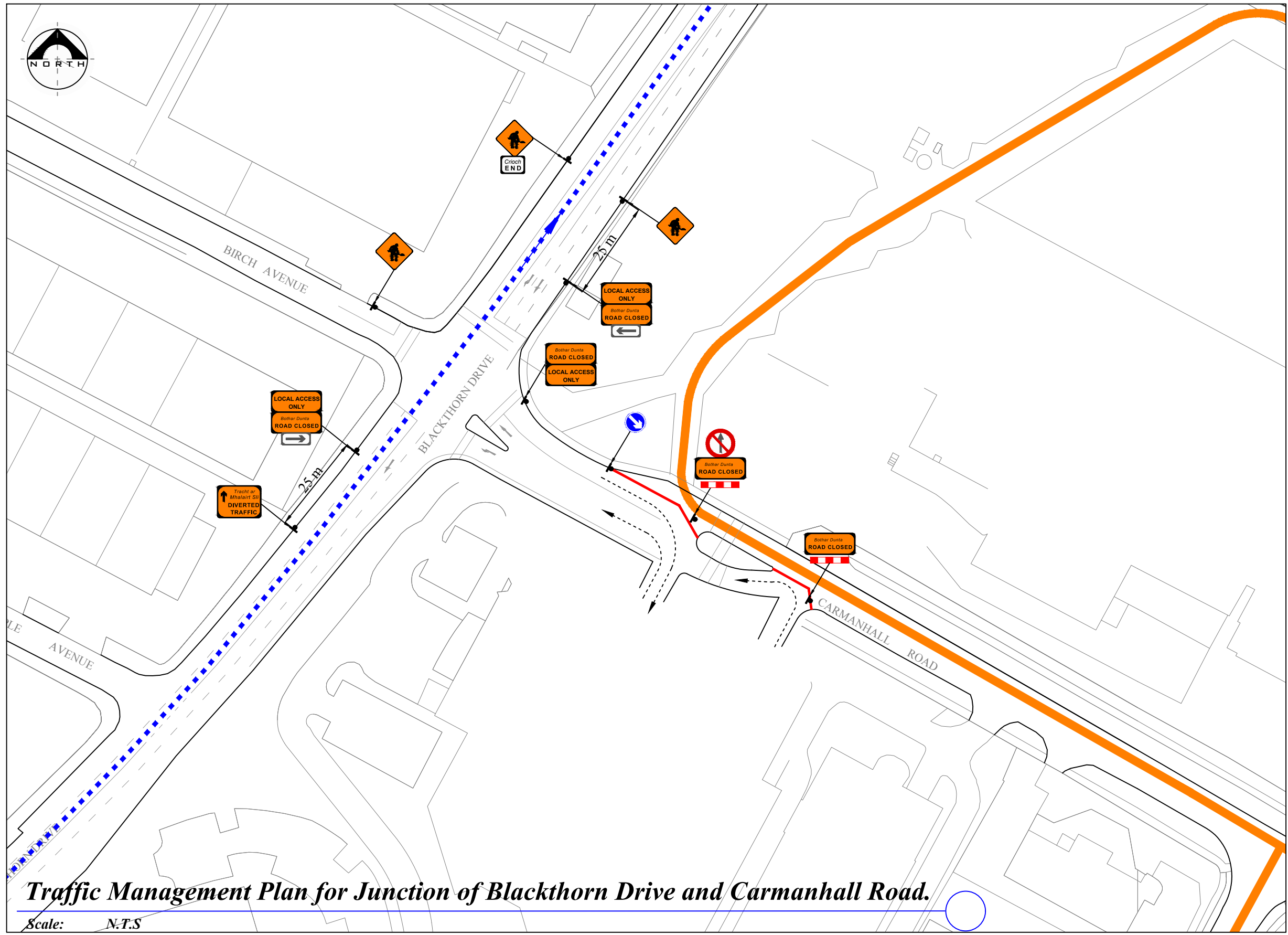
- Note:**
1. All signs to comply with Chapter 8 of the "Traffic Signs Manual"-Guidance Document.
 2. Exact sign positions to be agreed on site.
 3. All safety zones to be maintained at all times.
 4. All affected Parties and An Garda Síochána to be notified prior to works commencing.
 5. Signs to be positioned so as not to cause an obstruction to other road users.
 6. Minimum lane width of 3.25 m to be maintained at all times.
 7. All signs to be 600 X 600 mm and faced with retro-reflective material to class ref 2 of EN 12899.
 8. All delineation devices should be designed in accordance with IS EN 13422.
 9. All signage to be as per table 8.2.4 of the "Traffic Signs Manual" - Guidance Document.
 10. Safety barrier to be in accordance with IS EN 1317.
 11. "End of Roadworks" sign placed 20m to 50m from end of works area.
 12. Installation, operation, maintenance and removal of traffic management measures should be carried out in accordance with "Traffic Signs Manual Chapter 8"
 13. Road closure to be manned at all times by Garda / Stewards.
 14. Local Access to be maintained.

Traffic Management Plan for Junction of Blackthorn Road and Corrig Road.

Scale: N.T.S



Rev:	Description:	Date:	Job Details:	Drawing:	Dwg no:
			Twilight Team Challenge at Sandymore Business District Thursday 29th September 2016	Traffic Management Plan for Junction of Blackthorn Road and Corrig Road.	03
			Sheet:	Drawn By:	Rev:
			CAD File ref.:	AK	
				Date:	Scale:
				September 2016	As Shown



LEGEND

- Sign Location
- Approved Pedestrian Barrier
- Traffic Cones
- Race Route
- Traffic Flow
- Diversion Route

- Design Parameters:**
1. Statutory Speed of the Road - 50km/h
 2. Distance between Advance Signs: 25m
 3. Number of Advance Signs: 3/No
 4. Minimum Visibility of Signs: 50m
 5. Longitudinal Safety Zone: 25m
 6. Lateral Safety Zone: 0.5m
 7. Leading Taper: 1 in 15m
 8. Maximum at Tapers Cone Space: 3m
 9. Maximum Longitudinal Cone Space: 6m

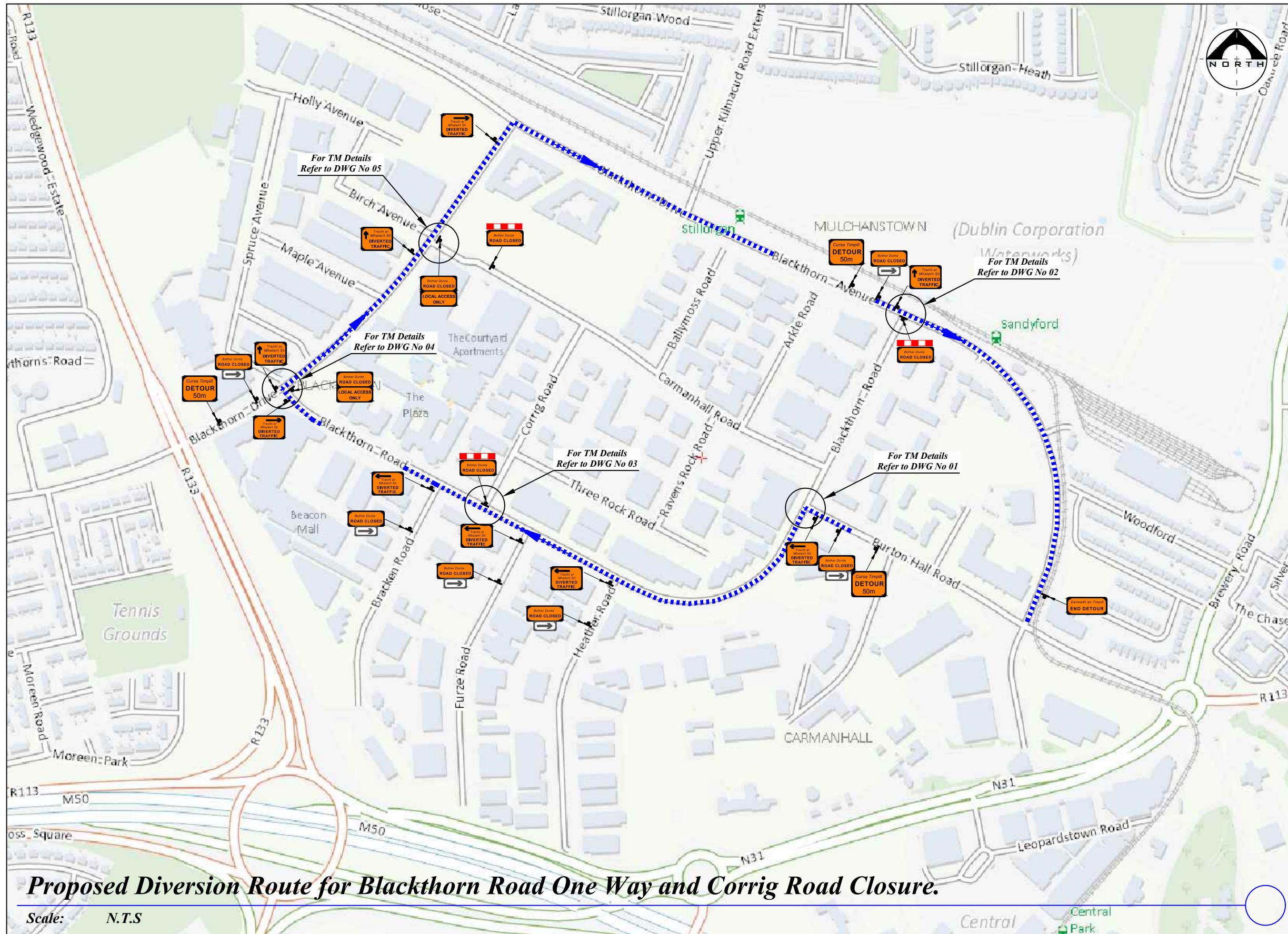
- Note:**
1. All signs to comply with Chapter 8 of the "Traffic Signs Manual"-Guidance Document.
 2. Exact sign positions to be agreed on site.
 3. All safety zones to be maintained at all times.
 4. All affected Parties and An Garda Siochana to be notified prior to works commencing.
 5. Signs to be positioned so as not to cause an obstruction to other road users.
 6. Minimum lane width of 3.25 m to be maintained at all times.
 7. All signs to be 600 X 600 mm and faced with retro-reflective material to class ref 2 of EN 12899.
 8. All delineation devices should be designed in accordance with IS EN 13422.
 9. All signage to be as per table 8.2.4 of the "Traffic Signs Manual" - Guidance Document.
 10. Safety barrier to be in accordance with IS EN 1317.
 11. "End of Roadworks" sign placed 20m to 50m from end of works area.
 12. Installation, operation, maintenance and removal of traffic management measures should be carried out in accordance with "Traffic Signs Manual Chapter 8"
 13. Road closure to be manned at all times by Garda / Stewards.
 14. Local Access to be maintained.

Traffic Management Plan for Junction of Blackthorn Drive and Carmanhall Road.

Scale: N.T.S



Rev:	Description:	Date:	Job Details:	Drawing:	Dwg no:
			Twilight Team Challenge at Sandford Business District Thursday 29th September 2016	Traffic Management Plan for Junction of Blackthorn Road and Corrig Road.	05
			Sheet:	CAD File ref.:	Rev:
				Drawn By: AK	Scale: As Shown
				Date: September 2016	



LEGEND

- Sign Location
- Approved Pedestrian Barrier
- Traffic Cones
- Race Route
- Traffic Flow
- Diversion Route

- Design Parameters:**
1. Statutory Speed of the Road - 50km/h
 2. Distance between Advance Signs: 25m
 3. Number of Advance Signs: 3/No
 4. Minimum Visibility of Signs: 50m
 5. Longitudinal Safety Zone: 25m
 6. Lateral Safety Zone: 0.5m
 7. Leading Taper: 1 in 15m
 8. Maximum at Tapers Cone Space: 3m
 9. Maximum Longitudinal Cone Space: 6m

- Note:**
1. All signs to comply with Chapter 8 of the "Traffic Signs Manual"-Guidance Document.
 2. Exact sign positions to be agreed on site.
 3. All safety zones to be maintained at all times.
 4. All affected Parties and An Garda Siochana to be notified prior to works commencing.
 5. Signs to be positioned so as not to cause an obstruction to other road users.
 6. Minimum lane width of 3.25 m to be maintained at all times.
 7. All signs to be 600 X 600 mm and faced with retro-reflective material to class ref 2 of EN 12899.
 8. All delineation devices should be designed in accordance with IS EN 13422.
 9. All signage to be as per table 8.2.4 of the "Traffic Signs Manual" - Guidance Document.
 10. Safety barrier to be in accordance with IS EN 1317.
 11. "End of Roadworks" sign placed 20m to 50m from end of works area.
 12. Installation, operation, maintenance and removal of traffic management measures should be carried out in accordance with "Traffic Signs Manual Chapter 8"
 13. Road closure to be manned at all times by Garda / Stewards.
 14. Local Access to be maintained.

Proposed Diversion Route for Blackthorn Road One Way and Corrig Road Closure.

Scale: N.T.S



Rev:	Description:	Date:	Job Details:	Drawing:	Dwg no:
			Twilight Team Challenge at Sandyford Business District Thursday 29th September 2016	Proposed Diversion Route for Blackthorn Road One Way and Corrig Road Closure.	06
			Sheet:	Drawn By:	Rev:
			CAD File ref.:	AK	
				Date:	Scale:
				September 2016	As Shown