

# dlr times

SPRING 2022

LOOK INSIDE

Free inclusive  
bike rental  
scheme

New Chief Executive  
Appointed

## Looking to the future

Read about the new dlr Heritage Plan inside

# lookinside

dlr COUNTY HERITAGE PLAN .....	03
dlr NEWS	
Introduction to Frank Curran .....	04
Active Travel .....	05
dlr BUSINESS & TOURISM	
Dalkey Castle .....	06
FULL Programme .....	06
dlr PUBLIC INFORMATION	
Social homes BER upgrade .....	07
Women In Sport Week .....	07
Water Safety Advice .....	08
dlr STAFF PROFILE	
Simon Coate .....	08
dlr NEWS	
Free inclusive bike rental .....	09
WIN: Tickets to Longitude Festival .....	09
dlr ARTS & LIBRARY EVENTS	
Dreamer's Space .....	10
Seachtain na Gaeilge .....	10
What's On in April? .....	11
YOUR dlr COUNCILLORS .....	12

## Dún Laoghaire-Rathdown County Council

County Hall, Marine Road, Dún Laoghaire, Co. Dublin, Ireland. A96 K6C9

PHONE: 01 205 4700

EMAIL: info@dlrcoco.ie

### Dundrum Local Area Office

Dundrum Office Park, Main Street, Dundrum, D14

Monday – Friday 9:30am to 12:30pm and 1:30pm to 4:30pm

PHONE: 01 205 4880

EMAIL: info@dlrcoco.ie

dlrcoco.ie

dlrtourism.ie | events.dlrcoco.ie  
libraries.dlrcoco.ie

Printed in Ireland on paper that has been sourced sustainably. Please recycle after use.

Designed by dlr

@dlrcc | dlrcoco.ie

DunLaoghaireRathdownCountyCouncil

To receive the dlr times by email please contact us: [commsoffice@dlrcoco.ie](mailto:commsoffice@dlrcoco.ie)

The dlr times is available in Irish at [dlrcoco.ie/dlritimes](http://dlrcoco.ie/dlritimes)



## Message from An Cathaoirleach

Welcome to this Spring edition of the dlr Times. As life begins to return to some level of normality, this edition highlights several key initiatives that have been happening across the County.

Inside, you can read about our new County Heritage Plan which outlines a clear framework of how our Council will work to promote and protect our cultural and natural heritage across the county. There is also an update about Active Travel within the county and how you can rent a free bike with the Mobility hub.

We also feature the social housing energy retrofit programme, which will result in warmer, more comfortable homes & will benefit the health of all those living in them.

Finally, Dún Laoghaire-Rathdown recently welcomed a new Chief Executive, Mr Frank Curran, and I would like to take this opportunity to welcome him to Dún Laoghaire-Rathdown and look forward to working with him over the coming years.

CLLR. LETTICE MCCARTHY



## Message from the dlr Chief Executive

Hello, my name is Frank Curran and I am honoured to have been appointed as Chief Executive of Dún Laoghaire-Rathdown County Council. I arrive in your county at a very interesting time for local government in Ireland.

Over the last two years, and with a lot of hard work, there are been a renewed appreciation for the positive impact that councils can play in the development of local areas. Working closely with elected councillors, the public and my colleagues in the council executive, I intend to continue to build on the progress that has already been made.

I also want to develop future opportunities for growth in all areas of the county for us all whether you are a business, a community or sports group or a citizen.

I very much look forward to continuing to develop Dún Laoghaire-Rathdown as the most progressive, inclusive and accessible county in the state.

FRANK CURRAN

## CoCo Markets

PEOPLE'S PARK & DLR LEXICON, Dún Laoghaire  
Sunday 11am-4pm

MARLAY PARK  
Rathfarnham, Dublin 16  
Saturday 10am-4pm & Sunday 11am-4pm



## EMERGENCY TELEPHONE NUMBERS

Out of Hours : 01 677 8844  
[after 5pm + weekends]  
Homeless Persons: 1800 724 724  
[after hours services]  
Irish Water: 1850 278 278  
[24 hours]

## Your dlr parks



### BLACKROCK PARK

TIME: Open Access

### CABINTEELY PARK

TIMES: Sep 8am to 8pm | Oct 8am to 7pm | Nov – Jan 8am to 5pm | Feb 8am to 6pm | Mar 8am to 7pm | Apr 8am to 8pm | May – Aug 8am to 10.30pm

### DEER PARK

TIME: Open Access

### FERNHILL PARK & GARDENS

TIME: 9am - 6pm

### KILBOGGET PARK

TIME: Open Access

### KILLINEY HILL PARK

TIME: Open Access

### MARLAY PARK

TIME: Sep 9am to 8pm | Oct 9am to 6pm | Nov – Jan 9am to 5pm | Feb – Mar 9am to 6pm | Apr 9am to 9pm | May – Aug 9am to 10pm

### PEOPLE'S PARK

TIME: Dec – Mar 8am to 4.30pm | Apr – May 8am to 7.30pm | Jun – Sep 8am to 8pm | Oct – Nov 8am to 7.30pm

### SHANGANAGH PARK

TIME: Open Access

## Recycling information



### BALLYOGAN RECYCLING

Ballyogan Road

TELEPHONE: 01 291 3600

TIME: Mon – Fri 8.30am to 5.30pm  
Sat 9.30am to 5.30pm | Sun/Bank Hols 10.30am to 5.30pm.

CLOSED: Christmas Eve – St. Stephen's Day, New Year's Day, Easter Sunday.

### EDEN PARK RECYCLING

Summerhill Road, Glashule

TIME: Mon – Thur 8.30am to 4pm  
Fri – Sat 8.30am to 3.30pm.

CLOSED: Sunday, Bank Holidays, Public Holidays.

### SHANGANAGH RECYCLING CENTRE

Cemetery Car Park, Shankill

TIME: Mon – Thur 8.30am to 4pm  
Fri – Sat 8.30am to 3.30pm.

CLOSED: Sunday, Bank Holidays, Public Holidays.

## Your dlr libraries



### dlr Lexicon

Haigh Terrace, Dún Laoghaire  
TEL: 01 280 1147

TIME: Mon – Thur 9.30am – 8pm  
Fri to Sat 9.30am – 5pm | Sun 12noon – 4pm

### BLACKROCK

Blackrock Town Hall, Main Street

TEL: 01 288 8117

TIME: Mon, Wed, Fri & Sat 10am – 1pm, 2pm – 5pm | Tue & Thur 1.15pm – 8pm

### CABINTEELY\*

Old Bray Road, Cabinteely  
TEL: 01 285 5363

TIME: Mon, Wed, Fri\* & Sat\* 10am – 1pm, 2pm – 5pm | Tue & Thur 2pm – 8pm

### DALKEY

Castle Street, Dalkey  
TEL: 01 285 5317

TIME: Mon, Wed, Fri & Sat 10am – 1pm, 2pm – 5pm | Tue & Thur 1.15pm – 8pm

### DEANSGRANGE

Clonkeen Drive, Deansgrange  
TEL: 01 285 0860

TIME: Mon 10am – 5pm | Tue to Thur 10am – 8pm | Fri & Sat 10am – 5pm. My Open Library mode NOT currently in operation.

### DUNDRUM

Upper Churchtown Road, Dundrum

TEL: 01 298 5000

TIME: Mon, Fri & Sat 10am – 1pm, 2pm – 5pm | Tue to Thur 10am – 8pm

### SHANKILL\*

Library Road, Shankill

TEL: 01 282 3081

TIME: Mon, Wed, Fri\* & Sat\* 10am – 1pm, 2pm – 5pm | Tue & Thur 2pm – 8pm

### STILLORGAN

Unit J (First Floor), Stillorgan Shopping Centre

TEL: 01 288 9655

TIME: Mon, Tue & Wed 10am – 5pm | Thurs 10am – 8pm | Fri & Sat 10am – 1pm & 2pm – 5pm

\* Libraries with an asterisk are open either Friday or Saturday – please contact them for further details.  
- On Bank Holiday weekends, all libraries are closed Saturday, Sunday & Monday.



The new dlr County Heritage Plan sets out a Shared Vision/ Ár bhfís and 7 Areas of Focus/ Ár 7 réimse fócais to inspire connections with local heritage, safeguard what we want to hand on to the next generation and celebrate the interaction of people and place through time.

# Bringing the past to the future



The plan arose from a six-month engagement and co-creation process involving many people with an interest in heritage right across the county and steered by the dlr County Heritage Forum. We would like to thank everyone who contributed their time, ideas and wisdom at the online workshops and who made online and written submissions during 2021.

The Heritage Plan sets out a clear framework for how we will work to promote, protect and increase understanding of the wonderful and diverse heritage of our county. The plan encourages collaboration and partnership with community groups and organisations with an interest in heritage, and will enable exciting new projects and initiatives.

Over the next 5 years, the County Heritage Plan will be a live and agile document, updated regularly to account for opportunities and the creative evolution of projects. We welcome you to take part in the implementation of the plan and to share your heritage insights with us.

If you want to find out more, the planned actions and outcomes can be explored online here:

**[dlrcoco.ie/HeritagePlan](https://dlrcoco.ie/HeritagePlan)**

Please contact dlr Heritage Officer, Deirdre Black **[dblack@dlrcoco.ie](mailto:dblack@dlrcoco.ie)** if you would like a hard copy of the plan.

The actions of the new Heritage Plan complement those in the dlr Climate and Biodiversity Action Plans. The new national framework Heritage Ireland 2030 provides a strong foundation for the roll out of the local actions in our Heritage Plan.

**#inspireconnections**

**@dlrheritage**

*“Cultural Heritage includes all aspects of the environment resulting from the interaction between people and places through time. This can include tangible (physical) heritage such as buildings, archaeology, documents and structures, as well as intangible heritage such as music, language, craft and sport. Natural Heritage includes landscape, seascape and historic parks as well as physical, biological and geological formations.”*

*“Is éard is Oidhreacht Chultúrtha ann ná gach gné den timpeallacht atá ann mar thoradh ar an idirghníomhaíocht idir daoine agus áiteanna le himeacht ama. Áirítear léi oidhreacht inláimhsithe (fisiciúil), amhail foirgnimh, seandálaíocht, cáipéisí agus struchtúir, chomh maith le hoidhreacht dholáimhsithe, amhail ceol, teanga, ceardaíocht agus spórt. Is éard is Oidhreacht Nádurtha ann ná tírdhreach, muirdhreach agus páirceanna stairiúla, chomh maith le foirmíochtaí fisiciúla, bitheolaíocha agus geolaíocha.”*

# Introduction to Frank Curran, Chief Executive

## Previous Posts/Experience prior to the CE role

I graduated in Civil Engineering from UCD in 1991 and have worked in the local government sector for my entire career, most recently as Chief Executive of both Wicklow and Leitrim County Council's and prior to that as Director of Services with Waterford County Council. I have completed an MSc in Environmental Protection, and MA in Local Government Management and I am a qualified Business and Executive Coach (UCD Smurfit).

## Why the Public Service?

I have spent over thirty years in the public sector, and I have found it extremely rewarding.

Through working with Elected Members, staff and other stakeholders, Local Authority Chief Executives are at the forefront of developing our cities and counties as better places to live, work, invest in and visit. I get particular job satisfaction from delivering quality housing solutions and developing sustainable communities.

Delivering quality Infrastructure, improving the public realm in out towns and working with the business community brings significant job satisfaction.

Local Authorities are, of course, major employers in their own right and I have always enjoyed assisting staff at all levels to develop their own careers.

Local Authorities, and particularly, Dún Laoghaire-Rathdown are leaders in terms of Climate Action through Active Travel, resource management, energy retrofitting, green infrastructure etc. and there is also always a feeling of making a contribution to society.

Developing the Arts, Sports, Culture and Library Service are also key elements of the job that brings its own rewards.

I also enjoy working with elected members to develop plans and policies such as the County Development Plan. The Dún Laoghaire-Rathdown County Development Plan 2022-2028 is now at the final stages of preparation. This plan will guide development in the County under the broad over-arching themes of Climate Resilience, Healthy Placemaking and Economic Opportunity.

## Challenges & Rewards of Public Service

One of the challenges of working in the public sector is building consensus and this can only be done through public consultation. We see some of these challenges in our active travel and public realm schemes where decisions have to be made in how we share our road space between pedestrians, cyclists and motorists as we move to a more sustainable modal share.

There are also challenges in terms of delivering major infrastructure which can take a significant length of time and face the prospect of judicial review at all stages.

There is, of course, major job satisfaction when these projects are delivered.

## Typical Working Day?

One of the advantages to being Chief Executive of a Local Authority is that there is so much variety and no two days are the same. Any day could involve meetings with elected members, staff, community groups, potential investors, government agencies, sports clubs and many more. There are also decisions to be made in relation to major planning applications and prioritising investment. There can be a lot of evening meetings also, many of which of course can be very enjoyable.



## Priorities for the Chief Executive in the coming years?

Priorities for the County in the coming years would be to increase the supply of Social, Affordable, Cost Rental and Private housing in accordance with the County Development Plan. Providing the necessary social infrastructure in terms of sports, community buildings and quality parks and open spaces will also be a priority.

Climate Action and Biodiversity will be a major focus in terms of active travel, green infrastructure and energy management.

Providing quality infrastructure and enhancing the public realm of our towns & villages will be a major focus.

Economic Development through incubation hubs, working with the third level sector, Business Improvement Districts, Chambers of Commerce and Tourism organisations will also be a priority.



***Housing supply, Climate Action and Biodiversity will be a major focus in terms of active travel, green infrastructure and energy management.***

# Active Travel: Walking & Cycling Infrastructure

dlr will receive €38 million from the NTA to help facilitate the development of various infrastructure projects across the county, including projects such as junction improvements for cyclists and pedestrians, greenways in parks, Harbour Area public realm improvements, and accessibility improvements to name a few. Please see below for updates on current projects.



## Glenageary Road Upper Scheme (between Sallnoggin & Killiney Towers Roundabouts)

Following a presentation to the Elected Members of the Dun Laoghaire Area Committee (HEPI) the Active Travel Section, undertook a Non-Statutory Public Consultation for the above Scheme and sought feedback from the public about the proposed changes that included:

- The merging of the existing cycle facilities into a two-way cycle facility on the north (sea) side of Glenageary Road Upper. It is also proposed to physically segregate the two-way cycle facility from the vehicular lanes.
- The left turn slip lane from Glenageary Road Upper onto Glenageary Road Lower is being removed and replaced with the two-way cycle facility. Traffic counts at this junction noted that this left turn movement is low volume (1.65% of vehicles at this junction) and its removal will not impact the capacity of the junction. The existing island is being modified to provide an overrun area for larger vehicles.
- A new toucan crossing of Glenageary Road Lower is proposed to provide a safe and segregated option for pedestrians and cyclists.
- Side road junctions along Glenageary Road Upper are being narrowed in line with the recommendations in DMURS and additional green areas provided where possible.
- A new toucan crossing is proposed at Rathdown School to cater for school children walking and cycling to the school.

202 submissions were received and 47% in favour, 22% in favour but had comments and 31% did not want the scheme to proceed. Further details here: [dlrcoco.citizenspace.com/transportation/glenageary-road-upper-public-consultation/](https://dlrcoco.citizenspace.com/transportation/glenageary-road-upper-public-consultation/)

This consultation is now completed and moving to construction.

## dlr Connector

The pre-design consultation programme was designed to be iterative and thorough, to gather representative and insightful feedback from the local community to create a more tailored walking, cycling and public realm improvement scheme. The consultation took place from end of 2021 to beginning of 2022.

The project Pre-Design community survey received 320 responses from November 2021 to January 2022 via our Citizenspace public consultation website [dlrcoco.citizenspace.com](https://dlrcoco.citizenspace.com)



dlr Connector proposed route

In early December 2021, youth workshops were held in partnership with Transition Year programmes at the Oatlands College and St Raphaela's Secondary School, both located near the Stillorgan section of the proposed route. More than 50 students participated in the workshop, with a nearly even gender split among participants.

The project team also partnered with the Disability Linkage group at Dún Laoghaire Rathdown's Public Participation Network to hold a dedicated workshop with disability advocates to gather their unique and valuable insights.

Representatives of businesses along the route, ranging from shopping centres and enterprise centres to small businesses, were invited to participate in a dedicated workshop to gather their unique insights and perspective.

In early Jan 2022, a final workshop was held with Councillors to present the insights we heard from the community and gather their feedback and concerns before the preliminary design process for the project begins.

## Active projects – status update

### CONSTRUCTION STAGE:

- Glenageary Road Upper
- Sea to Mountains
- Park to Park
- Mountains to Metals
- Drummartin Park
- Eden Park

### EARLY DESIGN STAGE

- Leopardstown Road
- Grange Road and Ballinbeer Road
- Leopardstown-Ballyogan Area

### PRELIMINARY DESIGN STAGE

- Dún Laoghaire Central
- dlr Connector
- Cherrywood to Shankill Greenway
- Deansgrange cycle route
- Taney Road to N11
- Rochestown Avenue



### Visit our Local Entrepreneurs at the dlr Pop Up Shop

You never know what you might find in the dlr Pop Up Shop on George's Street Upper, Dún Laoghaire.

If you're looking for an unusual gift, maybe some upcycled clothing, or perhaps a unique piece of jewellery, drop in to the Pop Up next time you're in Dún Laoghaire. The shop, operated by dlr's Economic Development Unit, is rented on a weekly basis to different local entrepreneurs, selling goods ranging from beauty products to art to handmade crafts.

With occupants changing regularly, you're bound to find something new each time you visit.

The Pop Up is located at Unit 213B, Dún Laoghaire Shopping Centre, George's Street Upper, Dún Laoghaire, Co. Dublin. You can get more information at [dlrcoco.ie/en/business/pop-shop](http://dlrcoco.ie/en/business/pop-shop).

If you're interested in booking a space in the shop contact us at [economicdev@dlrcoco.ie](mailto:economicdev@dlrcoco.ie) or 01-2047083.

### Dalkey Castle Medieval Living History Experience



Dalkey Castle is gearing up to receive overseas visitors again after an absence of two years. Beginning with a warm welcome, guests will be enlightened to the fact that in

the fourteenth century, when the coastal town of Dalkey was a bustling port, Dalkey Castle was built to safeguard precious cargo. The grounds include tenth-century St. Begnet's Church and Graveyard. With the contemporary addition of a Visitors' Centre and Writers' Gallery, multi-award-winning Dalkey Castle & Heritage Centre is an unforgettable experience.

Costumed actors from Deilig Inis Living History Theatre Co. perform a medieval Living History experience from basement to battlements. The Archer demonstrates his longbow prowess before leading visitors via the Murder Hole to the battlements and the magnificent views. Cook shares medieval recipes - including her favourite, roast goose.

The Barber Surgeon is prepared for all eventualities and writes out his potions in the ancient art of calligraphy.

The Writers' Gallery features 45 renowned Irish writers and creative artists from Joyce to Bono, and Beckett to Maeve Binchy. The Visitors' Centre has scaled models, and a fascinating interactive presentation in 12 languages.

History comes to life at Dalkey Castle & Heritage Centre. Open all year round, 6 days per week. Closed on Tuesdays. Dalkey Castle is supported by dlrcoco.

[dalkeycastle.com/about/booktickets](http://dalkeycastle.com/about/booktickets)

### Dublin Mountain Experience – Digital Map

From the mountains to the sea, Dublin is blessed with a stunning natural landscape. Spend a day getting close to nature this Winter with a wide variety of walks, hill walks or tours that are suitable for the entire family. There's so many to choose from on our Interactive Dublin Mountain Experience map. [www.dlrtourism.ie/visit](http://www.dlrtourism.ie/visit)

### FULL Management Capability Programme



The FULL programme is a Council led economic development initiative for businesses that want to invest in developing foundational skills to scale their businesses. There are three pillars to this programme; Financial Understanding, Leadership and Lean thinking which are all essential for the long-term growth of companies.

The Council is partnering with all of the Business Associations in dlr including Sandyford Business District and dlr Chamber of Commerce to encourage participation on the FULL programme.

The Financial Understanding aspect of FULL focusing on helping businesses to strengthen their strategic financial capabilities and decision making for future growth. There are two types of support: one being long term mentoring from a seasoned financial expert for one hour a week for up to 6 months. The other support is a new Financial Understanding App to start building essential financial skills.

The second element of FULL is enabling businesses, individuals and staff to develop and build their leadership abilities, whatever their role. The Council has teamed up with LIFT Ireland to help local companies transform their leadership culture using a highly time efficient and well proven system. dlr became the first local authority in Ireland to partner with LIFT (Leading Ireland's Future Together).

It only takes 40 minutes a week for business owners with their staff to run a LIFT leadership programme and it will have an immediate positive impact. More than 100 organisations, and 20,000 people across Ireland are already part of LIFT. Businesses such as AIB, Goal, Covalen, Petra Property Management and Enterprise Solutions have all seen their teams grow stronger through LIFT. Covalen CEO Suzanne Dolan says, 'the results have been incredible, including strengthening new and existing relationships, building confidence within ourselves and really valuing accountability for our own individual development and growth'.

The third piece of the FULL Programme is Lean business management training. Lean is about aligning the skills, talents, resources, processes and strategy of a business with the needs of its customers. Finding this alignment allows a business to be lightweight and nimble so they can quickly respond to changes in the market and ensure sustainability. We offer two programmes for businesses interested in Lean: one is Lean for Leaders for companies with over 30 employees and the other is Lean for Micro for smaller sized businesses.

If you want to find out more about the FULL programme, email [leo@dlrcoco.ie](mailto:leo@dlrcoco.ie) or visit [localenterprise.ie/dlr](http://localenterprise.ie/dlr)



# Social homes transformed with energy efficiency upgrade

dlr Housing and SSE Airtricity are working together to transform communities and homes as part of a specialised energy retrofit rollout and so far 53 homes have been upgraded to a deep retrofit standard.

This project will ensure that residents of Ballyogan and Stillorgan initially and other areas across the county will have the highest standards of energy efficiency in their homes as well as benefitting from improved living standards.

The homes involved have been upgraded from the lowest possible BER rating of G and F to all units gaining a B2 – A2 BER standard. The upgrade measures included new windows and doors, solar panels & power divert, external insulation, LED lights, attic insulation and heating control upgrades.

The project is making significant contribution to a low carbon transition, saving 600MWH per year; equivalent to the annual total electricity consumption of 143 houses, and providing 143.1kw of roof top 100% renewable energy throughout the local area.

The retrofit works have translated into significant savings for our tenants and an improved living experience in their home. Residents whose homes were part of the pilot now have free hot water 365 days of the year.

dlr and SSE Airtricity are proud to partner on this joint collaboration to improve the energy efficiency, comfort and cost of living experience of tenants' homes.

This is part of the Government's National Programme which aims to see a third of housing stock retrofitted to a B2 building energy rating and assist Ireland to reduce carbon emissions by 2030.



## Women In Sport Week

7–13 March

Monday the 8 of March is International Women's Day and to celebrate, Dun Laoghaire Sports Partnership are promoting a Women in Sport Week, which will run from the 7–13 March. Working with our partners, we have scheduled lots of activities, events and workshops during the week to celebrate and support females in our local clubs and though out the County.

At the end of last year, Dun Laoghaire Rathdown Sports Partnership set up a Women in Sport Working Group to promote and support female participation in sport in our County. We want to create a cultural shift in our perception of girls and women in sport and activity. Taking direction from Sport Ireland, we want to drive an ethos where women have equal opportunity to achieve their full potential, while enjoying a lifelong involvement in sport.

Focusing on the four pillars of the Women in Sport Policy - Coaching & Officiating, Active Participation, Leadership & Governance & Visibility, we plan to build on the significant work that has already been undertaken in this area, recognising the opportunity to make a significant impact on the lives of women through their involvement in sport.

Further information: [dlrsportspartnership.ie](http://dlrsportspartnership.ie)

### WOMEN IN SPORT WEEK CALENDAR

#### 7 MARCH

- Yoga Online for Women
- Walking Programme

#### 8 MARCH

- Women in Sport Coffee Morning (Sport Ireland)
- Girls Table Tennis Leadership Programme
- Coaching Teenage Girls Workshop

#### 9 MARCH

- Strength & Balance Online Class
- Swimmin Women
- Women On Wednesday (Sport Ireland)

#### 10 MARCH

- Girls Get Going Get Rowing
- Coaching & Officiating (Sport Ireland)
- FAI Kickstart Coaching Course

#### 11 MARCH

- M-Power Mentoring (Sport Ireland)
- Leadership & Governance (Sport Ireland)

#### 12 MARCH

- Park Run in local parks
- Yoga in Cabinteely park

#### 13 MARCH

- Celebrating Womens Sports Event In Carrickmines Croquet & Lawn TC

# Water Safety Advice and Tips

## Know the Risk



### Coastal Water Safety

Before you go into the water, make a plan. Make sure that you tell a friend/family where you are going and when you will return and bring a fully charged phone with you.

It is important when going in or near the water including all types of fishing, jet skiing, water skiing, sailing, windsurfing, paddle boarding to always wear a personal Flotation Device. It should be the correct size and you should know how to operate it.

### Sea Swimming

During the colder months, follow these useful tips:

- Get in warm and get out warm,
- Swim with a friend,
- Don't swim out to sea,
- Always swim parallel to the shore,
- Don't stay in the water too long until you are acclimatized and swim regularly,
- Swim at designated bathing areas,
- Wear a brightly coloured swimming cap,
- Bring a tow float.

Always check the weather and be aware of RIP currents before you enter the water. For further information please see [watersafety.ie](http://watersafety.ie)

### Checklist to bring when Open Water Swimming

- A silicone cap if dipping all year round, with an additional neoprene cap if distance swimming during the winter months.
- A dry absorbent towel.
- Ear plugs – especially in October to May.
- A tow float, even when swimming close to shore and especially at slipways and piers.
- A standing mat, particularly from October to May to counteract the severity of the cold ground while toggling in and out.
- Floating goggles and a bottle of baby shampoo to rinse, them off after each swim. This prevents fogging and increases visibility.
- A thermal flask containing a hot drink to ingest after exiting the water.
- A thermal beanie cap to wear immediately upon exiting the water and good warm clothing.
- Booties or socks.
- Gloves.



**Simon Coate**  
HARBOUR MASTER

#### What do you have for breakfast?

I try and walk 10k every day before breakfast which is a bowl of porridge.

#### What do you do?

I have been the Dún Laoghaire Harbour Master for 31 years and my duties are to maintain a safe port, ensure that all statutory, regulatory and conservancy duties are carried out, levy rates and charges where applicable. I also manage port emergencies and apply other relevant legislation. I work closely with the Operations Manager and harbour staff.

#### What are your hobbies?

Walking, gardening, reading and assisting with sailing events.

#### What is your typical workday like?

There is no 'typical' day as such – as usually there is something different happening every day. However, I would carry out a daily check on ships that may be in the harbour and check on those that may be expected. The summer months are obviously busier on the water as the waterfront yacht clubs and sailing schools run training courses and occasional races within the harbour – and that is monitored. A certain amount of time is spent on checking boat storage in the public boatyard and allocating moorings within the harbour.

#### What is the most difficult part of your job?

Liaising with all the many users and keeping them happy and at the same time making sure that they are all complying with the harbour Notices to Mariners and the bye-laws.

#### What is the most rewarding part of your job?

Making the above work! Obviously as the years go by it becomes easier especially as everyone involved have the same intention to make Dún Laoghaire Harbour a safe and happy environment.

Little did I think in the 70s when I was attending the Irish Nautical College on the West Pier, now the Irish National Sailing School, that in 2022, I would be starting my thirty-first year working in this great Harbour.

I have witnessed some great events such as the arrival of Miki the elephant from Fossett's Circus in 2004 as a foot passenger on the HSS Stena Explorer & in 1998 a car containing an improvised bomb was intercepted at the Harbour by An Gardaí and the Bomb Squad.

#### Favourite place to visit?

I like to visit family in the UK.



## Free inclusive bike rental along the coast

Dún Laoghaire-Rathdown County Council and dlr Sports Partnership are continuing their collaboration with The Bike Hub and Cycling Without Age to provide a free inclusive bike rental scheme in 2022. The scheme provides an opportunity to citizens of all abilities and ages to enjoy cycling along the Coastal Mobility Route (CMR) in Dún Laoghaire and was launched in the Summer of 2021.

The fleet of inclusive bikes includes two pedal-assist Cycling Without Age trishaws which are designed to carry one or two people. Older adults and people with limited mobility can avail of the opportunity to go on a free cycle at an easy pace, piloted by trained volunteer pilots taking in the sights and sounds of the coastline of the Coastal Mobility Route, whatever the weather.



There is also a tandem bike, a handcycle and a specialised electric assisted trike for hire by children or adults who find regular two-wheeled bicycles challenging.

The bikes are hired from The Bike Hub, located at Dún Laoghaire harbour, across from the R.N.L.I. shop and booking of the trishaws or inclusive bikes can be made via [thebikehub.ie](http://thebikehub.ie)

The Bike Hub staff will be on site to facilitate all queries and show you how to use the bikes.



## Calling All Green Schools

Environmental Awareness are currently working with schools throughout dlr to complete Green Flag renewals and so far, we have seen some great work in relation to litter and waste reduction, energy and water conservation, sustainable travel, biodiversity and active travel.

Any school who are wishing to apply for their Green Flag in 2022 are invited to contact the Council to arrange their renewal visit before April 1st, 2022.

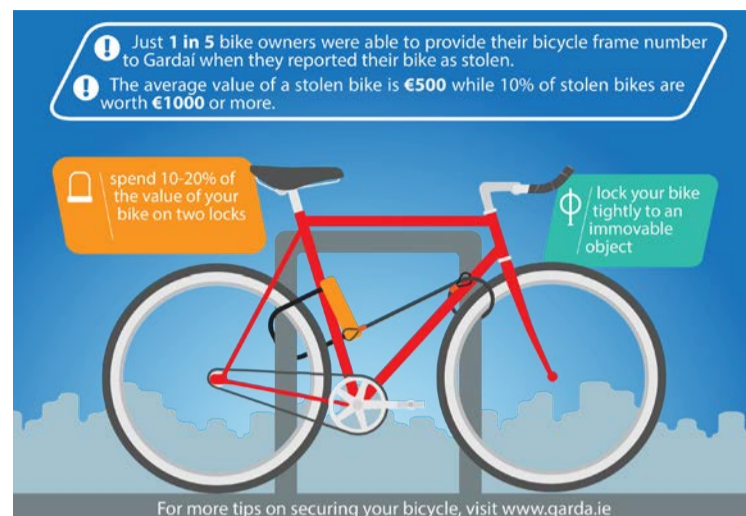
The Green Schools programme is facilitated locally by dlr County Council staff, in conjunction with An Taisce. The programme is designed to promote and acknowledge whole school action for the environment. Schools undertake long term projects on environmental issues such as waste and litter management, energy, water, sustainable transport, biodiversity and global citizenship.

## Leave Only Pawprints

Green Dog Walkers is a community led programme that promotes responsible dog ownership in a positive and non-confrontational way. If you are a dog owner who always picks-up after your dog, take the pledge to become a Green Dog Walker Champion. We will post you some complimentary dog waste bags, bag dispenser and further information. To take the pledge, please visit [dlrcoco.ie](http://dlrcoco.ie) or contact [info@dlrcoco.ie](mailto:info@dlrcoco.ie)



## 'Lock It or Lose It' theft awareness campaign



Dún Laoghaire-Rathdown County Council, in conjunction with An Garda Síochána, has launched a campaign to raise awareness of bike security within the cycling community and encourages cyclists to purchase a good bike lock when buying a bike. Cyclists are encouraged to take extra precautions in keeping their bicycles safe by locking them in the most secure way possible and aiming to spend 10% to 20% of the value of your bike on two locks.

## Stillorgan Village Library is now open!



Our hub library, located upstairs in Stillorgan Village Shopping Center, is now open and offering a range of core library services. We can help with books and DVDs, printing, PC access, Acorn Tablet lending, Home Energy Kits, study space, and lots more. Please contact the team at 01 2889655 or by email [stillorganlib@dlrcoc.ie](mailto:stillorganlib@dlrcoc.ie) to find out more.

This library is a temporary solution to providing a library service while we wait on our new library to be built. You can read about our plans here: [dlrcoco.ie/stlaurence](http://dlrcoco.ie/stlaurence)

## WIN: Tickets to Longitude Festival

- We have four tickets to give away to the much anticipated Longitude Festival at Marlay Park from 1–3 July 2022.
- Line up this year includes Denise Chaila, Digga D, Doja Cat, Jack Harlow and much more.
- All you have to do to win is sign up for the dlr Times.
- [dlrcoco.ie/LongitudeComp](http://dlrcoco.ie/LongitudeComp)
- Competition closes at 5pm on Monday 2 May.
- Winner will be picked on 3 May and notified by email.

## Dreamer's Space

Corrina Askin

7 February – 30 April 2022: Level 4 dlr Lexlcon

Dreamer's Space is a series of small interactions that inspire ideas and stillness. Corrina lives at the foot of Cave Hill mountain in Belfast. She loves to go for a wander in nature, looking out for nature spirits. She was inspired by dlr Lexlcon, a place full of books bursting with ideas but also a quiet space to focus and think.

Corrina has worked for CBeebies, MTV, Channel 4 and The Irish Film Board and she has won many awards for her illustrations.

[corrinaaskin.com](http://corrinaaskin.com)

Instagram: [corrinaaskin](https://www.instagram.com/corrinaaskin)

Supported by Creative Ireland funding.



## Art and Artefacts of Dún Laoghaire-Rathdown

Peter Pearson

17 February – 30 April 2022:  
Level 3 dlr Lexlcon

Tours of exhibition with Peter Pearson: Wed 2 March at 11.00am and Sat 12 March at 3.00pm

Talk by Peter Pearson: Wed 23 March at 7.00pm in Studio Theatre

Booking essential on Eventbrite for tours and talk.

Peter Pearson is well-known as a passionate advocate for the conservation of Ireland's architectural heritage and also as a historian and highly regarded painter. He is the author of numerous publications including Dún Laoghaire/Kingstown and Between the Mountains and the Sea. His new book The Granite Coast (O'Brien Press) will be published later in 2022. This exhibition is a celebration of his wide-ranging work.

## Acorn tablets: accessible technology in your hands

Since the onset of the pandemic, we've all had to rely a lot more on technology to stay connected. But those without access to devices, or those who do not have the skills to use them, can find themselves increasingly excluded from society.

The new ACORN tablet project from the dlr Digital Inclusion working group hopes to help bridge the digital divide by providing age-friendly, easy-to-use technology. The ACORN tablet is designed with the older person in mind, and the principle behind the tablet is to provide more accessible options for those with little or no computer or smart device experience. The home screen is clear and easy to navigate. ACORN tablets are now available for lending to all dlr Library members. For more information on this lending scheme, contact your local dlr branch.



## Get Crafty with dlr Libraries!

Our series of craft-based online events for children and adults continues until mid-March, with spaces still available for some of the workshops.

See [events.dlrcoco.ie/event/get-crafty-dlr-libraries](https://events.dlrcoco.ie/event/get-crafty-dlr-libraries) for more details.

## Seachtain na Gaeilge

1 – 17 Márta 2022

Join dlr libraries in exploring ways to use and celebrate our wonderful native language. Bígí linn! We'll have online and in-person events including storytelling sessions from library staff. Our programme includes:



### Óga Yoga

Thurs 10 March

We will have yoga as Gaeilge for adults on 10 March.



### DIY Gaeilge

Wed 16 March, 7.00pm

Join author and journalist Úna-Minh Kavanagh for an informative, hour-long presentation highlighting the many online and free Irish language resources available to kickstart your journey into the Irish language.

## Don't miss any of our on-site or virtual events:

- Follow us on Eventbrite so you'll get an alert every time we post a new event:  
[eventbrite.ie/o/dlr-libraries-8271535259](https://eventbrite.ie/o/dlr-libraries-8271535259)
- Keep an eye on the event calendar on our website:  
[libraries.dlrcoco.ie/events-and-news/event-calendar](https://libraries.dlrcoco.ie/events-and-news/event-calendar)
- Sign up for our fortnightly e-bulletin, full of news and events:  
[libraries.dlrcoco.ie/events-and-news/dlr-libraries-ebulletin](https://libraries.dlrcoco.ie/events-and-news/dlr-libraries-ebulletin)
- Follow us on Facebook, Twitter, Instagram & TikTok



## Stirring Memories Exhibition

23 Feb – 30 April: Level 3, dlr Lexicon

What was life like in the borough of Dún Laoghaire-Rathdown over the years? Storyteller Helena Byrne posed this question to many members of our local day care centres. Enjoy these stirring memories of trips to the Baths

on sunny days, shopping in the much-loved local shops of the past such as Lee's and Lipton's; and getting dressed up for a Saturday night out in the Top Hat. Comprising audio recordings and written interviews, this exhibition is sure to be both heartwarming and enlightening for all. Supported by the Creative Ireland Programme.

### WHAT'S ON IN APRIL?

## One Dublin, One Book

One Dublin, One Book is an annual initiative from Dublin City Libraries, which aims to encourage everyone in Dublin to read a designated book connected with our capital city during the month of April. *Nora: A Love Story of Nora Barnacle and James Joyce* by Nuala O'Connor is the chosen title for April 2022. We'd like to get as many book clubs as possible reading this title during April. If you're interested in getting multiple copies of Nora for your reading group within dlr, please email [librarybib@dlrcoco.ie](mailto:librarybib@dlrcoco.ie). We'll be hosting a live Zoom event with author Nuala O'Connor, in conversation with dlr Poet in Residence Jessica Traynor, on Friday 8 April at 1.00pm.

Keep an eye on the official One Dublin, One Book website [onedublinonebook.ie](http://onedublinonebook.ie) for more events across the capital during April.



UNA O'CONNOR

## Spring into Storytime

Spring into Storytime with dlr Libraries during the month of April, where we will be hosting storytime and craft sessions, both in-person and online! Spring into Storytime is one of the 4 main strands of the national Right to Read programme, which aims to promote reading and literacy resources for people of all ages

with a special emphasis on reading development for children through Storytime sessions. Keep an eye on our website and social media channels for more details.

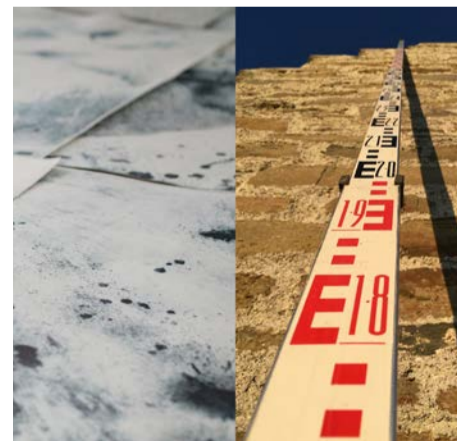


### MUNICIPAL GALLERY | dlr LEXICON

## On Steady Ground/ Unsteady Ground

Runs until Sunday 13th March 2022. Admission Free.

A collaborative exhibition by artists Cora Cummins and Saoirse Higgins. Cummins and Higgins were awarded a Visual Art Commission from Dún Laoghaire-Rathdown County Council, funded by the Arts Council.



Featuring new work in etching, video, photography and sculpture, the exhibition connects the artists' parallel research interests in environment and landscape change, and reflections on losing what seemed permanent. Both artists live in the Dún Laoghaire area and draw influence from the local landscape and history. Some of the work has also been made in the Orkney Islands.

## Home Place

An exhibition of new work by Gerry Blake

25th March – 3rd June 2022

(closed bank holiday weekends). Admission Free



GERRY BLAKE

Dave, Co.Wicklow, 2022

Home, in the form of a dwelling, is a place of belonging and attachment. Making a home, however, is more difficult now than at any time in recent memory. Housing shortages are rife across the developed world and in Ireland the problem is particularly acute. Despite the dire need for adequate accommodation there are a huge number of empty and abandoned houses to be seen in towns and cities throughout the country.

Photographic artist Gerry Blake has spent the last 3 years exploring abandoned houses around Ireland, visiting counties Cavan, Monaghan, Dublin, Wicklow, Sligo, Cork and Kerry. On these journeys, he also met with people who are living in various forms of accommodation, from cottages and apartments to house boats and converted buses. The question is asked why are people struggling to make themselves a home in a country littered with empty houses?

[dlrcoco.ie/en/municipal-gallery-dlr-lexicon/home-place-exhibition-new-work-gerry-blake](http://dlrcoco.ie/en/municipal-gallery-dlr-lexicon/home-place-exhibition-new-work-gerry-blake)

## HELIGO

Musicians in Residence Concert

April 28th at 7pm: dlr Lexicon Studio. Tickets: €5



Multi-instrumentalists Ruth O'Mahony-Brady and Mary Barnecutt have come together to form Heligo - a musical synthesis of strings, piano, electronics, and layered vocal harmonies. They will perform a selection of songs and soundscapes created during their residency at the dlr Lexicon Studio in August/September 2021.

[dlrcoco.ie/en/music/musician-residence-ruth-omahony-brady](http://dlrcoco.ie/en/music/musician-residence-ruth-omahony-brady)

# your dlr Councillors represent you

## DUNDRUM



CLLR. **SHAY BRENNAN** FF  
c/o dlr County Hall,  
Dún Laoghaire  
**MOBILE:** 086 829 0570  
**EMAIL:** sbrennan@cllr.dlrco.ie



CLLR. **ANNE COLGAN** IND  
30 Ashlawn,  
Ballinteer Road  
**MOBILE:** 087 245 4202  
**EMAIL:** acolgan@cllr.dlrco.ie



CLLR. **DANIEL DUNNE** GP  
126 Meadow Park,  
Churchtown  
**MOBILE:** 087 115 4468  
**EMAIL:** ddunne@cllr.dlrco.ie



CLLR. **ANNA GRAINGER** FG  
18 Holywell,  
Upper Kilmacud Road  
**MOBILE:** 087 282 5511  
**EMAIL:** agranger@cllr.dlrco.ie



CLLR. **SEAN McLOUGHLIN** IND  
49A Broadford Drive,  
Ballinteer, Dublin 16  
**MOBILE:** 087 741 1638  
**EMAIL:** smcloughlin@cllr.dlrco.ie



CLLR. **PETER O'BRIEN** LAB  
23 Clonard Lawn,  
Dundrum, D16 KT53  
**MOBILE:** 086 461 1638  
**EMAIL:** pobrien@cllr.dlrco.ie



CLLR. **JIM O'LEARY** FG  
48 Parkvale,  
Sandyford Road,  
Dundrum  
**MOBILE:** 086 818 6732  
**EMAIL:** joleary@cllr.dlrco.ie

## STILLORGAN



CLLR. **DEIRDRE DONNELLY** IND  
c/o dlr County Hall,  
Dún Laoghaire  
**MOBILE:** 086 461 1625  
**EMAIL:** ddonnelly@cllr.dlrco.ie



CLLR. **EVA ELIZABETH DOWLING** GP  
c/o dlr County Hall,  
Dún Laoghaire  
**MOBILE:** 087 141 5641  
**EMAIL:** edowling@cllr.dlrco.ie



CLLR. **JOHN KENNEDY** FG  
c/o dlr County Hall,  
Dún Laoghaire  
**MOBILE:** 087 772 0794  
**EMAIL:** jkennedy@cllr.dlrco.ie



CLLR. **MAEVE O'CONNELL** FG  
79 Slieve Rua, Drive,  
Kilmacud, Co. Dublin  
**MOBILE:** 086-8516936  
**EMAIL:** moconnell@cllr.dlrco.ie



CLLR. **BARRY SAUL** FG  
3 Mather Road North,  
Mount Merrion  
**MOBILE:** 086 781 4517  
**EMAIL:** bsaul@cllr.dlrco.ie



CLLR. **DÓNAL SMITH** FF  
c/o dlr County Hall,  
Dún Laoghaire  
**MOBILE:** 087 193 6483  
**EMAIL:** dsmith@cllr.dlrco.ie

## BLACKROCK



CLLR. **MARIE BAKER** FG  
38 Avondale Lawn,  
Blackrock  
**MOBILE:** 086 818 6704  
**EMAIL:** mbaker@cllr.dlrco.ie



CLLR. **KATE FEENEY** FF  
c/o dlr County Hall,  
Dún Laoghaire  
**MOBILE:** 086 461 1627  
**EMAIL:** kfeeney@cllr.dlrco.ie



CLLR. **MARY HANAFIN** FF  
c/o dlr County Hall,  
Dún Laoghaire  
**MOBILE:** 085 120 2121  
**EMAIL:** mhanafin@cllr.dlrco.ie



CLLR. **MAURICE DOCKRELL** FG  
c/o dlr County Hall,  
Dún Laoghaire  
**EMAIL:** mdockrell@cllr.dlrco.ie



CLLR. **SÉAFRA Ó FAOLÁIN** GP  
c/o dlr County Hall,  
Dún Laoghaire  
**MOBILE:** 087 908 1058  
**EMAIL:** sofaolain@cllr.dlrco.ie



CLLR. **MARTHA FANNING** LAB  
23 Convent Road,  
Blackrock, Co. Dublin  
**MOBILE:** 0872041559  
**EMAIL:** mfanning@cllr.dlrco.ie

## DÚN LAOGHAIRE



CLLR. **MARY FAYNE** FG  
Coolmaine, Sandycove  
Road, Sandycove, Co. Dublin  
**MOBILE:** 086 461 1626  
**EMAIL:** mfayne@cllr.dlrco.ie



CLLR. **LORRAINE HALL** FG  
71 Roseland Avenue,  
Cualanor, Dún Laoghaire  
**MOBILE:** 087 790 5555  
**EMAIL:** lhall@cllr.dlrco.ie



CLLR. **TOM KIVLEHAN** GP  
c/o dlr County Hall,  
Dún Laoghaire  
**MOBILE:** 087 373 2518  
**EMAIL:** tkivlehan@cllr.dlrco.ie



CLLR. **MELISA HALPIN** PBP  
c/o 13 Lwr George's St.,  
Dún Laoghaire  
**MOBILE:** 086 380 5793  
**EMAIL:** mhalpin@cllr.dlrco.ie



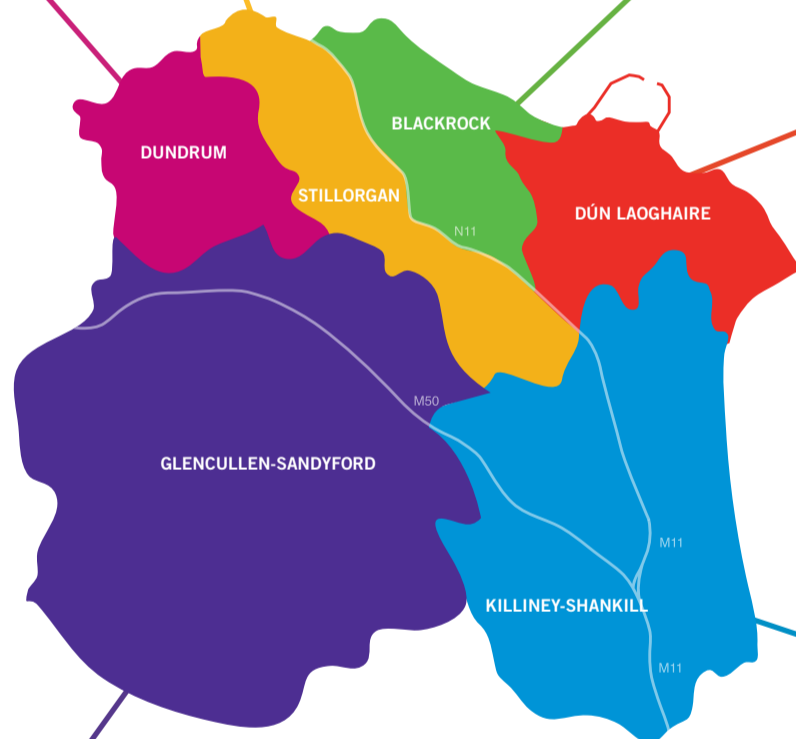
CLLR. **JUSTIN MOYLAN** FF  
c/o dlr County Hall,  
Dún Laoghaire  
**MOBILE:** 087 313 8815  
**EMAIL:** jmoylan@cllr.dlrco.ie



CLLR. **JULIET O'CONNELL** LAB  
59 Upper George's St.,  
Dún Laoghaire  
AN LEAS CHATHAOIRLEACH  
**MOBILE:** 087 270 7745  
**EMAIL:** joconnell@cllr.dlrco.ie



CLLR. **DAVE QUINN** SD  
20 Longford Terrace  
Monkstown  
**MOBILE:** 087 247 3448  
**EMAIL:** dquinn@cllr.dlrco.ie



CLLR. **KAZI AHMED** FG  
Robin Hill,  
Sandyford Road  
**MOBILE:** 086 031 3448  
**EMAIL:** kahmed@cllr.dlrco.ie



CLLR. **EMMA BLAIN** FG  
c/o dlr County Hall,  
Dún Laoghaire  
**MOBILE:** 087 715 2786  
**EMAIL:** eblain@cllr.dlrco.ie



CLLR. **MICHAEL FLEMING** IND  
6 Stepside Lane,  
Stepaside Village  
**MOBILE:** 086 020 1665  
**EMAIL:** mfleming@cllr.dlrco.ie



CLLR. **LETTIE MCCARTHY** LAB  
AN CATHAOIRLEACH  
23 Kilgobbin Heights,  
Stepaside  
**MOBILE:** 086 818 6718  
**EMAIL:** lmccarthy@cllr.dlrco.ie



CLLR. **PATRICIA KINSELLA** IND  
5 Milltown Bridge Road,  
Dublin 14  
**MOBILE:** 086 461 1634  
**EMAIL:** pkinsella@cllr.dlrco.ie



CLLR. **TOM MURPHY** FF  
Tree Tops, Barnacullia,  
Sandyford  
**MOBILE:** 086 781 4515  
**EMAIL:** tmurphy@cllr.dlrco.ie



CLLR. **OISÍN O'CONNOR** GP  
c/o dlr County Hall,  
Dún Laoghaire  
**MOBILE:** 087 606 5648  
**EMAIL:** oconnor@cllr.dlrco.ie

## GLENCULLEN-SANDYFORD

## KILLINEY-SHANKILL



CLLR. **MICHAEL CLARK** FF  
Fianna Fáil Office,  
c/o dlr County Hall,  
Dún Laoghaire  
**MOBILE:** 087 109 4032  
**EMAIL:** mclark@cllr.dlrco.ie



CLLR. **JIM GILDEA** FG  
Fairymount,  
Bray Road, Shankill  
**MOBILE:** 086 813 1456  
**EMAIL:** jgildea@cllr.dlrco.ie



CLLR. **HUGH LEWIS** IND  
179 Ashlawn Park,  
Ballybrack  
**MOBILE:** 086 781 4523  
**EMAIL:** hlewis@cllr.dlrco.ie



CLLR. **FRANK MCNAMARA** FG  
c/o dlr County Hall,  
Dún Laoghaire  
**MOBILE:** 087 104 3210  
**EMAIL:** fmcnamara@cllr.dlrco.ie



CLLR. **DENIS O'CALLAGHAN** LAB  
49 Rathallagh Park,  
Shankill  
**MOBILE:** 086 278 5609  
**EMAIL:** denisoc@cllr.dlrco.ie



CLLR. **UNA POWER** GP  
c/o dlr County Hall,  
Dún Laoghaire  
**MOBILE:** 087 386 1048  
**EMAIL:** unapower@cllr.dlrco.ie



CLLR. **CARRIE SMYTH** LAB  
Inislachan, Seafield  
Road, Killiney  
**MOBILE:** 086 383 5051  
**EMAIL:** carriesmyth@cllr.dlrco.ie