



[www.dlrcoco.ie](http://www.dlrcoco.ie)

Comhairle Contae County Council



# Community Awards

## Gradaim '16

Pobail

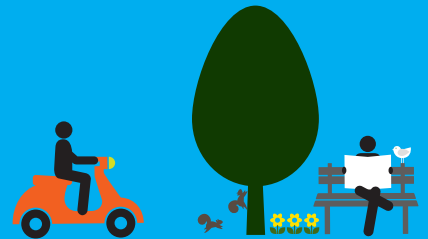
# Community Awards 2016

Dun Laoghaire Rathdown County Council's Annual Community Awards now in its 20th year, continues to support community groups and highlights the excellent work of the community by providing a display of their activities and projects held throughout the year. These awards allow the council to acknowledge the valuable contribution of community and voluntary groups within the county area.

Please submit your application by Friday 9th September 2016.

## The Awards

Prizes will be awarded in each category with one overall award across all categories.



## Judging

A panel of judges will assess your Application Form, which may include supplementary information and exhibition display. Entries will be assessed on:

- Originality of project.
- Level of local participation and effort involved.
- Group's contribution to the quality of life in their local community.
- Structure of the group and its aims.

## Exhibition

This year, Exhibits will be on display in County Hall, Dun Laoghaire from Monday 10th October to Friday 14th October 2016.

## Awards Ceremony

The prize giving and Awards Ceremony takes place on Thursday 13th October 2016 .

## Entry Form Please return the entry form on the other side of this programme to:

The Community Section, Economic, Community and Cultural Development Department,  
Dún Laoghaire-Rathdown County Council, County Hall, Marine Road, Dún Laoghaire,  
Co. Dublin. t: 087 239 6311 e: admin@diffusionevents.com

Closing date for receipt of ALL applications: Friday 9th September 2016.

# Gradaim Pobail 2016

Tá 20 mbliain ann ó bunaíodh Duaiseanna Pobail Bliantúla Chomhairle Contae Dhún Laoghaire-Ráth an Dúin. Tá siad ann mar thacaíocht do na grúpaí pobail agus nuair a chuirtear na gníomhaíochtaí agus na tionscadail a bhíonn ar siúl i rith na bliana ar taispeáint tarraingíonn siad aird ar an obair iontach a rinne an pobal. Cuireann na duaiseanna seo ar chumas na Comhairle aitheantas a thabhairt don obair fhiúntach a dhéanann an pobal agus grúpaí deonacha laistigh de limistéar an chontae.

Bíodh an t-iarratas istigh faoin Déardaoin, 9ú Meán Fómhair 2016.

## Na Duaiseanna

Bronnfar duaiseanna i ngach catagóir le gradam foriomlán amháin i ngach catagóir.



## An Mholtóireacht

Déanfaidh painéal moltóirí an fhoirm iarratais agus an t-eolas forlíontach agus an taispeántas foilseán a mheas. Déanfar na hiarratais a mheas ar bhonn na nithe seo:

- Bunúsacht an tionscadail.
- A mhéid a ghlac an pobal páirt ann agus an iarracht a cuireadh isteach.
- A mhéid a chuir obair an ghrúpa leis an gcaighdeán saoil ina bpobal.
- Comhdhéanamh an ghrúpa agus a aidhmeanna.

## Taispeántas

I mbliana, beidh na Foilseáin ar taispeáint i Halla an Chontae, Dún Laoghaire ón Luan go dtí an Aoine, 10 – 14 Deireadh Fómhair 2016.

## Bronnadh na nDuaiseanna

Beidh an searmanas agus bronnadh na nduaiseanna ar siúl ar an Déardaoin 13 Deireadh Fómhair 2016.

## Foirm Iarratais Seol an fhoirm chuig:

An Rannóg Pobail, An Rannóg Eacnamaíochta, Pobail agus Forbartha Cultúir,  
Comhairle Contae Dhún Laoghaire Ráth an Dúin, Halla an Chontae, Bóthar na Mara,  
Dún Laoghaire, Co. Bhaile Átha Cliath. t: 087 239 6311 r: [admin@diffusionevents.com](mailto:admin@diffusionevents.com)

Spriocdháta chun GACH foirm iarratais a bheith istigh: 9ú Meán Fómhair 2016.

**Gradaim Pobail 2016 Foirm Iarratais** CEANNLITREACHA LE DO THOIL  
**Community Awards 2016 Entry Form** PLEASE PRINT IN BLOCK CAPITALS

Ainm an Ghrúpa / Name of Group:

---

---

Seoladh óna bhfeidhmíonn an Grúpa / Address of where Group operates:

---

---

---

---

Uimhir Theileafóin / Telephone Number:

---

Uimhir Fóin Phóca / Mobile Number:

---

Seoladh Ríomhphoist / Email Address:

---

Seoladh an tSuímh Ghréasáin / Website Address:

---

Ainmnigh an príomhtheagmhálaí / Please nominate a Main Contact Person:

---

Teileafón Baile / Home Telephone:

---

Fón Póca / Mobile:

---

Seoladh Poist an Teagmhálaí / Contact Postal Address:

---

---

Cé mar a fuair sibh amach faoi na Duaiseanna Pobail / How did you learn about the Community Awards?

Fógra sna Nuachtáin / Newspaper advertising

Fógra ar an raidió / Radio advertising

Suíomh Gréasáin na Comhairle / Council Website

Ó bhéal / Word of mouth

Eile / Other



An Grúpa Deonach nó Neamhdheonach é an grúpa / Is your group Voluntary or Non Voluntary? Cuir tic in aon bhosca amháin le do thoil / Please tick one box only.

Deonach / Voluntary  Neamhdheonach / Non Voluntary

1. Cén t-achar a bhfuil an ghrúpa bunaithe?  
How long is your group established?

2. Déan cur síos ar ghníomhaíochtaí an ghrúpa  
Give details of your groups activities:

3. Cé mhéid ball gníomhach atá sa ghrúpa?  
How many active members are in your group?

4. Céard iad na haidhmeanna agus na cuspóirí atá ag an ngrúpa?  
What are the aims and objectives of your group?

5. An daoine as an áit iad na baill nó daoine níos faide ó bhaile, e.g. an bhfuil ballraíocht agaibh ar fud an Chontae? / Are your members local or do you cater for a wider area, e.g. are you county wide?

6. Cén tionscadal atá á chur isteach agaibh lena mheas?  
What project are you submitting for consideration?

7. Cuir síos go mion ar an tionscadal agus ar an iarratas / Detailed description of project and entry – Is cuid den phróiseas moltóireachta iad na foirmeacha iarratais / Please note the information you provide on the Application Form is part of the judging process:

Féadfar eolas breise a chur i gceangal leis an iarratas / Additional information can be attached to the application.

---

---

---

---

---

---

---

---

---

---

8. Cén fáth ar cheart sibh a mheas le haghaidh duais phobail?  
Why should you be considered for a Community Award?

---

---

---

---

---

Cuirfear seastán ar fáil do gach grúpa le go bhféadfaidh siad a dtionscadal a chur ar taispeánt. Beidh na seastáin 1m (ar leithead) x 2m (ar airde). / Each group will be allocated a stand to display their project. Measurements of the stands are 1m (w) x 2m(h)

An mbeidh treallamh breise uait? / Will you require any additional equipment?

Bord / Table  Soicéad Leitreach / Electrical Socket

Eile ( Tabhair Sonraí) / Other requirements (please give details)

---

---

---

Ní mór a thabhairt faoi deara go gcaithfidh Grúpaí a dtrealamh T.F. féin a thabhairt leo más gá agus ní mór a thabhairt faoi deara nach nglacann an Chomhairle aon fhreagracht as nithe a chailltear nó a ghoidtear / Please note Groups must provide their own I.T. equipment if required and the Council accepts no responsibility for lost or stolen items

Signed / Sínithe

Date /Dáta

