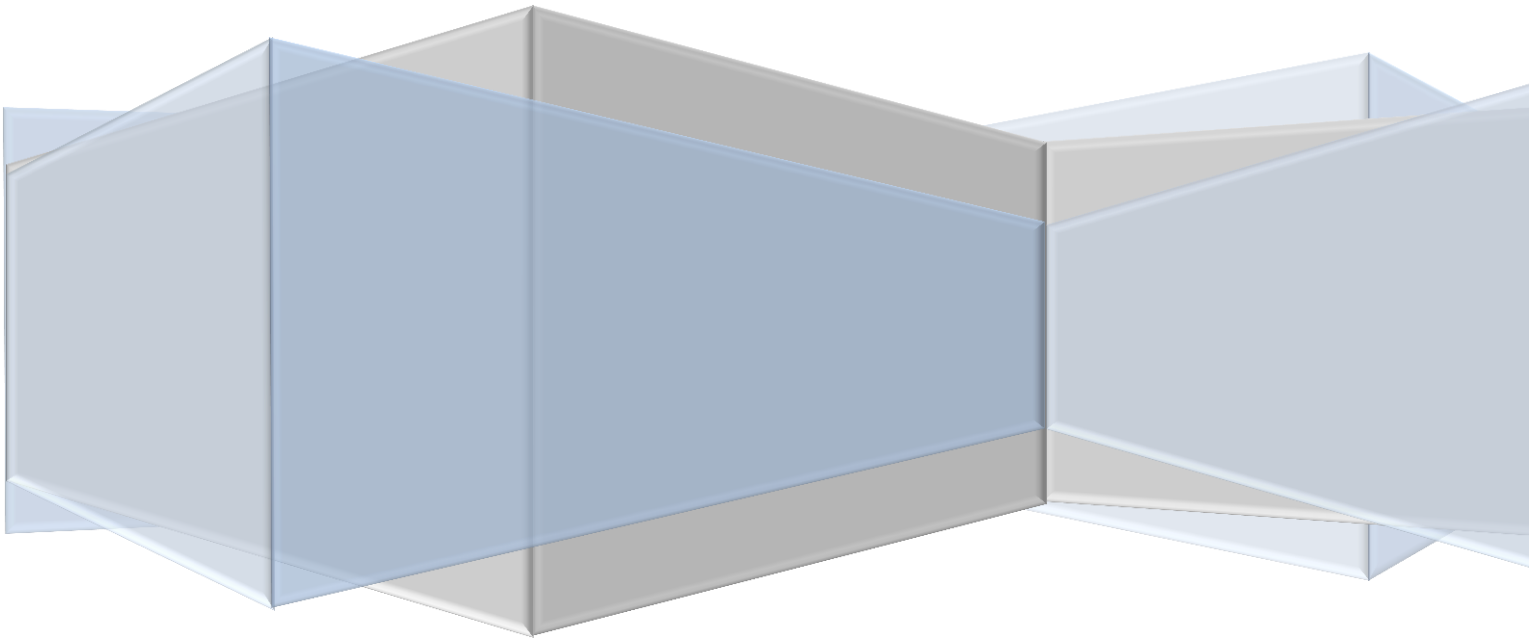




Dún Laoghaire Rathdown Joint Policing Committee

2016 - 2021



Forward

Dún Laoghaire Rathdown Joint Policing Committee (JPC) was established in 2009 and is a partnership between Dún Laoghaire Rathdown County Council, An Garda Síochána and the Community. The membership comprises of senior Garda Officers, elected councillors and Oireachtas members and representatives of community & voluntary groups.

The DLR Joint Policing Committee is intended to be a forum for discussion and a means of building confidence, trust and safety in the county. In doing this, the DLR JPC seeks to prioritise key community policing policy issues and identify initiatives which will contribute to improved community policing and prevention or reduction of future crime in Dún Laoghaire Rathdown.

As part of the process of creating this strategy a consultation process was undertaken with key service providers and residents in the county. A public meeting to consult with members of the public was held on October 26th 2015. This document was also developed in consideration of the local Policing Plan for the Dublin Metropolitan East Region in consultation with An Garda Síochána.

Three strategic objectives emerged as a result of this consultation around which this strategy has been developed. These include:

1. Supporting and promoting Crime Prevention in DLR
2. Enhancing Community Safety & Security in DLR
3. Facilitate Community Engagement and Collaboration

This strategy is attempting to provide a coordinated and collaborative inter-agency approach to developing a strong and safe county. Everybody has a role to play in creating safe environments. I hope the implementation of the actions in this document will enhance this work and contribute to the creation of a safe Dun Laoghaire Rathdown.

Is ar scáth a chéile a mhaireann na daoine

Cllr. Mary Hanafin

Chairperson

June 15th 2016



Background & Introduction

The legislative frame work for the establishments of Joint Policing Committees is set out in Section 36 of An Garda Síochána Act 2005 and the amendments to this act in 2014. Section 36(2) of the Act provides that a JPC's function is to serve as a forum for consultations, discussions and recommendations on matters affecting the policing of the local authority's administrative area, and in particular to:-

- Keep under review, a) the levels and patterns of crime, disorder and anti-social behaviour (including the patterns and levels of misuse of alcohol and drugs) and b) the underlying factors that contribute to these issues.
- Advise the local authority and the Garda Síochána on how they might best perform their functions and do everything feasibly possible to improve the safety and quality of life, to prevent crime, disorder and anti-social behaviour.
- Arrange and host public meetings concerning matters affecting the policing of the local authorities administrative area.
- Establish in consultation with the local Garda Superintendent and specific neighbourhoods, local policing fora to discuss and make recommendations to the JPC.
- Co-ordinate the activities of local policing fora.

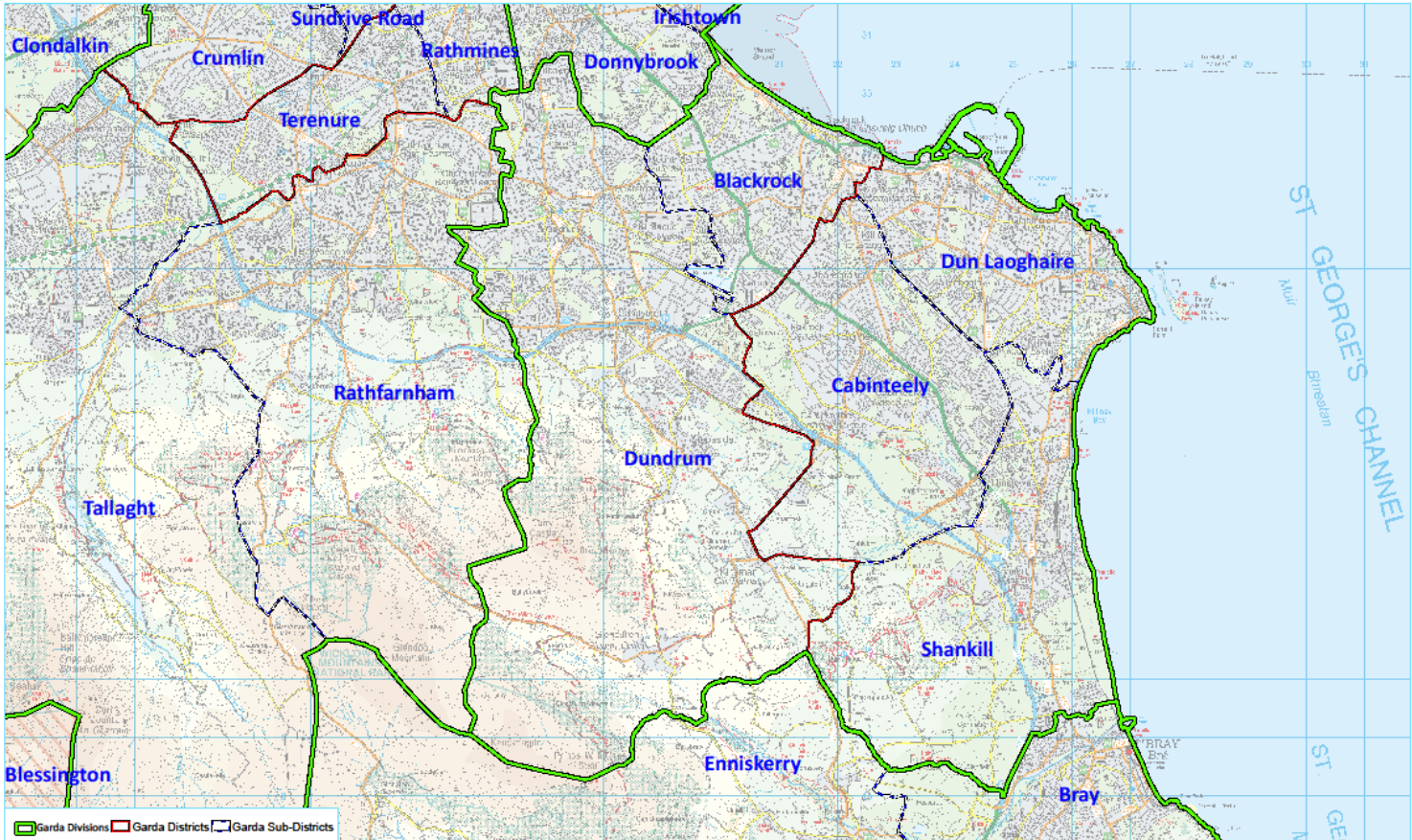
(Taken from the national Joint Policing Forum guidelines).

Garda Districts Covered by the Dún Laoghaire Rathdown Joint Policing Committee.

The majority of Dun Laoghaire Rathdown is located within the Dublin Metropolitan East district.

Within the DLR East district there are two sub districts of “**F**” covering Dún Laoghaire, Shankill and Cabinteely and the “**W**” covering the Blackrock, Stillorgan and Dundrum areas.

DMR EAST DIVISIONAL MAP



Garda Divisions
 Garda Districts
 Garda Sub-Districts

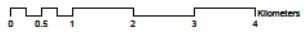
Ordnance Survey Ireland License No. EN 003713 05 © Copyright. All rights reserved 2013

Telex/Telephone: 01 656 3983
 Fax/Fac: 01 656 3988
 Lárbreán Gaisicín/Web site: www.garda.ie
 TerraGOTech GeoPDF Map ***

Mapping System: TerraGOTech
 Mapping System: TerraGOTech
 Scale: 1:60,000
 Date: 2013/05/08
 Author: Paul O'Sullivan
 Email: paul.osullivan@garda.ie

Map prepared by: PAUL O'SULLIVAN, Garda Mapping Section
email: paul.osullivan@garda.ie

1:60,000



Dún Laoghaire Rathdown Joint Policing Committee Membership 2016

Dún Laoghaire Rathdown County Representatives	
Cllr. Barry Saul	Elected representative
Cllr. Barry Ward	Elected representative
Cllr. Chris Curran	Elected representative
Cllr. Cormac Devlin	Elected representative
Cllr. Deirdre Donnelly	Elected representative
Cllr. Deirdre Kingston	Elected representative
Cllr. John Kennedy	Elected representative
Cllr. Liam Dockery	Elected representative
Cllr. Lynsey McGovern	Elected representative
Cllr. Mary Hanafin	<i>Chairperson</i> Elected representative
Cllr. Michael Merrigan	Elected representative
Cllr. Ossian Smyth	Elected representative
Cllr. Patricia Stewart	<i>Vice Chair</i> Elected representative
Cllr. Peter O' Brien	Elected representative
Cllr. Shay Brennan	Elected representative
Dearbhla Lawson	Director of Service, EC&CD.
Dave Lawless	Economic Development Officer

An Garda Síochána	
Orla Mc Partlin	Chief Superintendent
Martin Fitzgerald	Superintendent

Community Representatives	
Gay Wright	DLR Public Participation Network
Anne Harrington	DLR Public Participation Network
Richard Phillips	DLR Public Participation Network
Tony McCarthy	DLR Public Participation Network
Gina Hogan,	Loughlinstown, Shankill LPF
Reverend Asa Bjork	Dun Laoghaire, LPF
Vacant	Sandyford / Stepaside LPF

Members of the Oireachtas (5)	
To be appointed	

Operation of the Dún Laoghaire Rathdown Joint Policing Committee.

While the Garda and DLRCC partnership is central to the effective operation of the JPC it is essential that there is a collective approach to assigning and accepting responsibility.

- JPC members should indicate what they will contribute to its work. All stakeholders have a role to play.
- All members should be familiar with the Guidelines.
- All members should know the 3 strategic priorities identified for the year. A constructive and collaborative approach by all members is required to achieve results.
- All members should promote the work, achievements and success of the JPC through all channels of communication.



Members should be aware that policing issues that are in the Dún Laoghaire Rathdown area should in the first instance be referred to the relevant Garda Station.

The current Guidelines state that this JPC should be strategic. It should not be a forum for addressing matters of detail. It should set priorities and be action orientated.

The Dún Laoghaire Rathdown Joint Policing Committee is required to prepare a Six Year Strategic Plan.

- The strategic Plan which includes objectives from the Policing Plan must identify **3 strategic priorities**
- The main business of the JPC meeting must be devoted to progressing items on the Annual Work Plan
- The Dún Laoghaire Rathdown JPC Annual Report is a statutory requirement and must reflect the progress made in achieving the objectives contained in the Annual Work Plan.
- The guidelines state that the JPC meetings should not become a “talking shop”. Discussion of issues should be outcome focused and in this context should be of a constructive nature.
- A communication strategy is an essential element of the work of the JPC.
- To raise awareness and support for the work of the JPC full use should be made of existing networks. The work of the JPC should be publicised through local press and radio and through the use of on-line communications.
- It is envisaged that one public meeting will be held each year.

Planning and setting priorities for the six year strategic plan.

The current guidelines state that each JPC must make a six year strategic plan which links with other appropriate plans and strategies. In this regard the Work Plan for 2016 will be based on the current guidelines and code of practice which apply to JPCs.

These provide that the Annual Report should set out how the JPC carried out its function as set out in section 36(2) of the Garda Síochána Act 2005 and the outcomes from strategies adopted by the JPC.

The following core principles have been utilised in the preparation of the Dún Laoghaire Rathdown Joint Policing Committee Annual Work Plan

- Set out clear objectives
- Set out clear actions
- Identify key stakeholders
- Set out timescale for action
- Summarise progress achieved

As part of the process in developing the plan the Dún Laoghaire Rathdown Joint Policing Committee, submissions were invited from key organisations and service providers in the county.

The information gathered at the DLR JPC public meeting held on October 2015 also informed the development of the plan.

A focused workshop held between An Garda Síochána and Dún Laoghaire Rathdown County Council also took place in February 2016.

All of the above has informed the development of this draft plan.

The Plan outlines how through the work of the Dún Laoghaire Rathdown Joint Policing Committee both partners, Dún Laoghaire Rathdown County Council and the Garda Síochána along with members have the opportunity to contribute to the improved safety and quality of life in the community. This will be achieved through 3 strategic priority objectives these include:-



- 1. Supporting and promoting Crime Prevention in DLR**
- 2. Enhancing Community Safety & Security in DLR**
- 3. Facilitate Community Engagement and Collaboration on safety issues.**

Goal 1

• Supporting and promoting Crime Prevention in DLR

	Proposed Action	Lead Organisation	Time Frame
1.1	Reduce the level of Burglaries in the County through the implementation of Operation Thor.	An Garda Síochána	Ongoing
1.2	Research the need for additional CCTV at various strategic locations within the county. Identify priority projects for implementation within available resources.	DLRCC & An Garda Síochána	2016 / 2018
1.3	Continued Implementation of high visibility policing in the county.	An Garda Síochána	Ongoing
1.4	Conduct a safety audit / review of the main access points to DART and LUAS Stations in the county. Develop key recommendations and implementation plan. (Walkways, Lighting, safety etc.)	DLRCC & An Garda Síochána DART LUAS	2016 / 2018
1.5	Support road safety improvement plans in the county including bike and pedestrian safety, through Garda enforcement, Schools Programmes, cycling infrastructure development.	DLRCC & An Garda Síochána	Ongoing
1.6	Support the revitalisation of the Neighbourhood Watch scheme in the County.	An Garda Síochána	2016 / 2018
1.7	Explore the use of Social Media Platforms to communicate local crime prevention messages.	An Garda Síochána	2016 / 2018

Goal 2

• Enhancing Community Safety & Security in DLR

	Proposed Action	Lead Organisation	Time Frame
2.1	Establish regular high level meetings between An Garda Síochána and DLRCC to review Anti-Social Behaviour policy implementation and enhance effectiveness.	DLRCC An Garda Síochána	2 meetings per year.
2.2	Hold an annual meeting of the main Transport providers in the County to identify and discuss key on board and on site safety issues. Linking with Operation Irene.	DLRCC An Garda Síochána Dublin bus LUAS	Annual
2.3	Conduct an assessment and analysis of Domestic Violence incidents.	An Garda Síochána	2016 / 2018
2.4	Identify the Domestic Violence supports in the County. Including the voluntary organisations who support families and their need for emergency accommodation.	DLRCC	2016 / 2018
2.5	Support the implementation of the DLR Age Friendly Strategy.	An Garda Síochána	On going.
2.6	Establish a Victim of Crime Support Office in Dun Laoghaire.	An Garda Síochána	On going.

Goal 3

- **Facilitating Community Engagement and Collaboration on safety issues.**

	Proposed Action	Lead Organisation	Time Frame
3.1	Evaluate, report and make recommendations on the effectiveness and geographical coverage of the three Local Policing Forums established in the county.	DLRCC An Garda Síochána	End of 2016
3.2	For new and expanding communities, consider the need for designing out crime and safety at planning stage of new developments, including provision of community services infrastructure.	DLRCC An Garda Síochána	2017 / 2018
3.3	Engage the DLR Drugs & Alcohol Task Force as members of the JPC and seek updates on key issues relating to Drugs & Alcohol issues.	DLRCC An Garda Síochána	End of 2016
3.4	Support and work with other organisations to provide support service in the county for young people issues.	HSE An Garda Síochána DLRCC	2017
3.5	Further progress the work undertaken by the Garda Diversity Committee in Dún Laoghaire Rathdown.	An Garda Síochána	Ongoing



Working in collaboration with communities and service providers to create a strong and safe Dún Laoghaire Rathdown





Useful Contacts

Dun Laoghaire Rathdown County Council	
County Hall. Marine Road	01 2054700
Dundrum Office	01 2054700
Housing Department Anti-social Behaviour Unit	01 2054700 Ext 4112
Environment Department	01 2054817
Homeless Persons After Hours Services	1800 724724
An Garda Síochána	
Dun Laoghaire Station	01 666 5000
Shankill Station	01 666 5900
Cabinteely Station	01 666 5400
Blackrock Station	01 666 5200
Dundrum Station	01 666 5600
Rathfarnham Station	01 666 6500
Other organisations	
Dun Laoghaire Rathdown Local Drugs & Alcohol Task Force	01 706 0125 http://www.dlrdrugtaskforce.ie
Dun Laoghaire Rathdown Outreach Project.	http://www.drop.ie/
DLR Community Addiction Team	http://www.dlrcat.ie