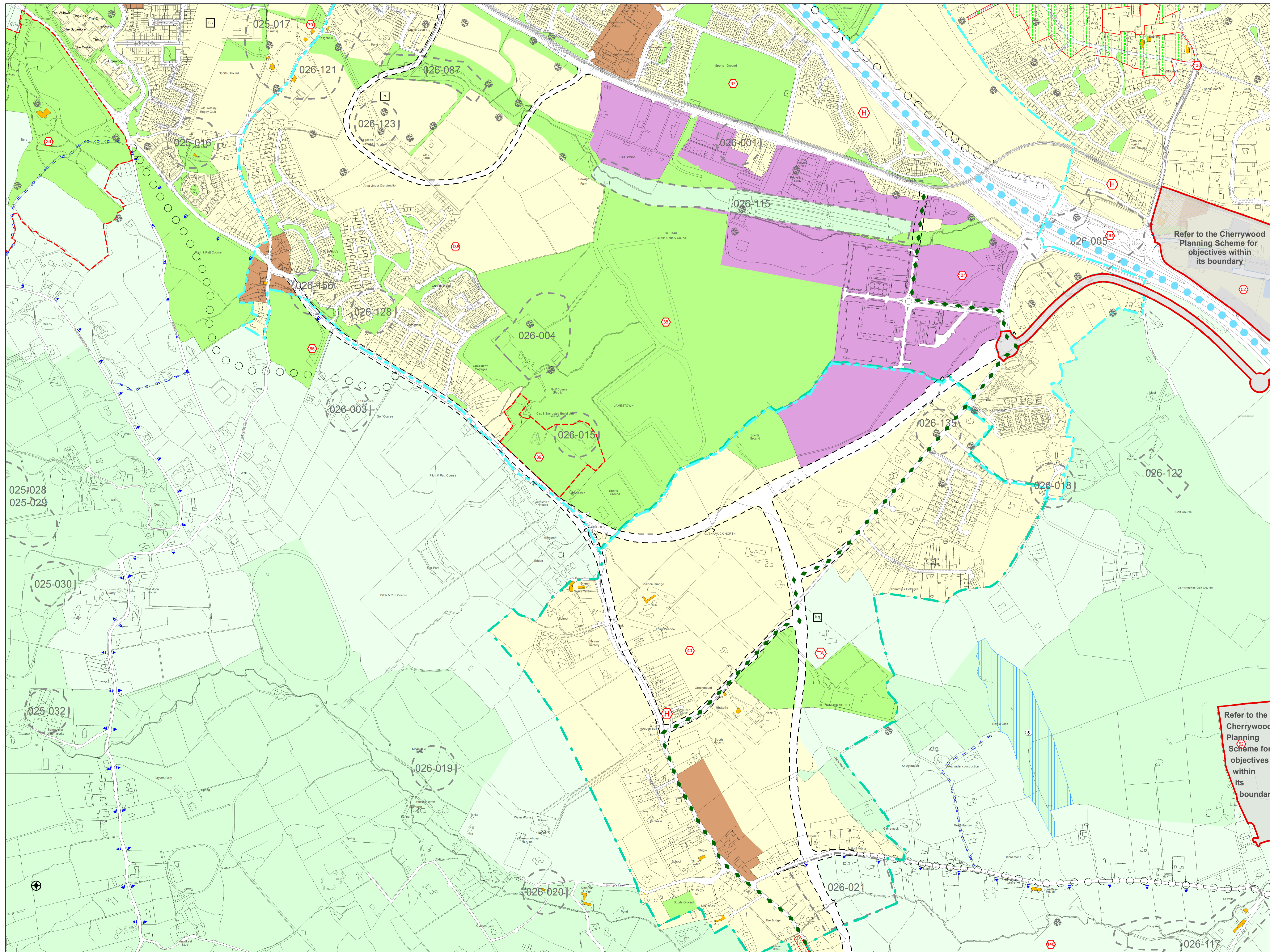
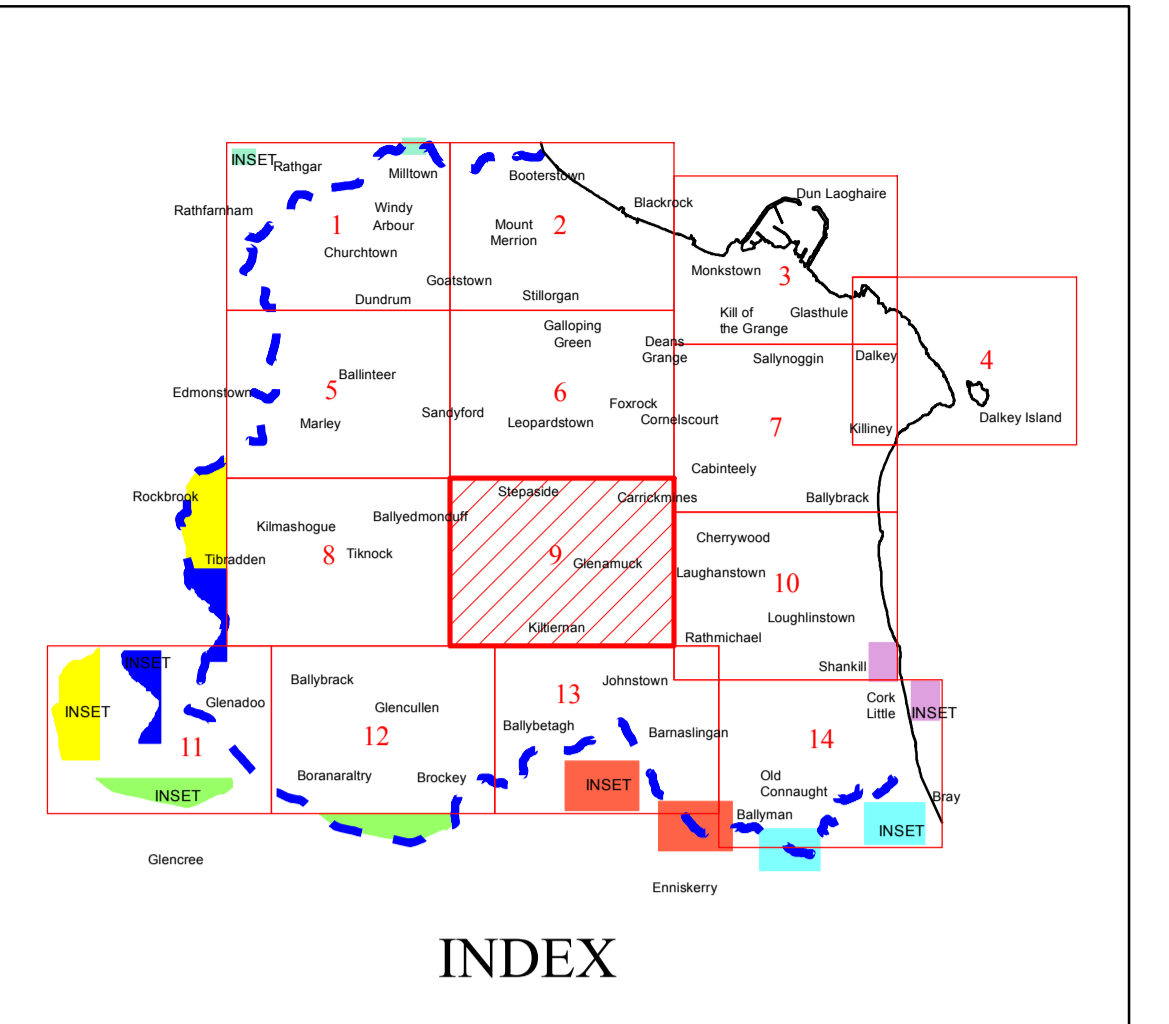


COMHAIRLE CHONTAE DHÚN LAOGHAIRE-RÁTH AN DÚIN

DÚN LAOGHAIRE-RATHDOWN COUNTY COUNCIL

COUNTY DEVELOPMENT PLAN 2016-2022

Adopted March 2016



USE ZONING OBJECTIVES

Objective A	To protect and/or improve residential amenity.	[Light Yellow]
Objective A1	To provide for new residential communities in accordance with approved local area plans.	[Yellow]
Objective A2	To provide for the creation of sustainable residential neighbourhoods and preserve and protect residential amenity.	[Light Green]
Objective B	To protect and improve rural amenity and to provide for the development of agriculture.	[Light Blue]
Objective DC	To protect, provide for and/or improve mixed-use district centre facilities.	[Orange]
Objective E	To provide for economic development and employment.	[Purple]
Objective F	To preserve and provide for open space with ancillary active recreational amenities.	[Light Green]
Objective G	To protect and improve high amenity areas.	[Light Green]
Objective GB	To protect and enhance the open nature of lands between urban areas.	[Light Green]
Objective LIW	To improve and provide for low density warehousing/light industrial warehousing uses.	[Blue]
Objective MH	To improve, encourage and facilitate the provision and expansion of medical/hospital uses and services.	[Brown]
Objective MIC	To consolidate and complete the development of the mixed use inner core to enhance and reinforce sustainable development.	[Orange]
Objective MOC	To provide for a mix of uses which complements the inner core, but with less retail and residential and more emphasis on employment and services.	[Light Blue]
Objective MTC	To protect, provide for and/or improve major town centre facilities.	[Light Blue]
Objective NC	To protect, provide for and/or improve mixed-use neighbourhood centre facilities.	[Light Blue]
Objective OE	To provide for office and enterprise development.	[Light Blue]
Objective TLI	To facilitate, support and enhance the development of third level education institutions.	[Light Blue]
Objective W	To provide for waterfront development and harbour related uses.	[Light Green]

OTHER OBJECTIVES

6 Year Road Proposal	[Dashed Line]
6 Year Motorway Proposal	[Dashed Line]
Strategic Road Reservation	[Dashed Line]
Long Term Road Proposal	[Dashed Line]
Long Term Motorway Proposal	[Dashed Line]
Proposed Luas Line Extension	[Blue Line]
Proposed Quality Bus/Bus Priority Route	[Green Line]
Public Right-of-Way	[Red Line]
Recreation Access Route	[Red Line]
Wicklow Way	[Red Line]
Proposed Sutton to Sandycove Walkway/Cycleway as a component part of the National East Coast Trail Cycle Route	[Green Line]
Protected Structures	[Yellow Star]
Record of Monuments and Places (For Areas of Archaeological Potential)	[Red Star]
Architectural Conservation Area	[Red Star]
Candidate Architectural Conservation Area	[Red Star]
"The Metals" Candidate Architectural Conservation Area	[Red Star]
Natura 2000 (SPA and SAC Areas)	[Blue Star]
Proposed Natural Heritage Areas	[Blue Star]
To preserve Views	[Blue Star]
To preserve Prospects	[Blue Star]
To protect and preserve Trees and Woodlands	[Blue Star]
No increase in the number of buildings permissible	[Blue Star]
To protect and/or provide for a Burial Ground	[Blue Star]
Boundary of Adopted Cherrywood Planning Scheme	[Red Line]
Boundary of Urban Framework Plan	[Red Line]
Boundary of lands for which a Local Area Plan will be prepared	[Red Line]
Boundary of Local Area Plan	[Red Line]
Boundary of Objective Area	[Red Line]
Specific Local Objective	[Red Line]
To provide accommodation for the Travelling Community	[Red Line]
County Council Housing Programme Site	[Red Line]
To provide for a Primary School	[Red Line]
To provide for a Post Primary School or other Institution	[Red Line]
To protect and/or provide for Institutional Use in open lands	[Red Line]
Mews Development Acceptable in Principle	[Red Line]
County Boundary	[Red Line]

Note:

- The lines of the Road Proposals shown are diagrammatic only and may be subject to change.
- The provisional alignment of the S2S/National East Coast Trail Cycle Route is diagrammatic only and may be subject to change.
- The boundaries of any proposed Local Area Plans are indicative only and may be subject to change.

0 50 100 200 300 400 500 Metres

Director of Planning and Organisational Innovation: M Henchy
Senior Planner: D Irvine