

ROCHESTOWN HOUSE



An excellent downsizing opportunity for older people

ROCHESTOWN HOUSE



Welcome to Rochestown House

Dún Laoghaire-Rathdown County Council is delighted to present, Rochestown House, an exclusive development ideally located within walking distance of Sallynoggin Village.



Situated in the former walled gardens of Somerton House, the development comprises 34 one bedroom dwellings that are available to eligible older people on the social housing list, with priority given to those who are willing to downsize from a larger Council owned rental property.

Specifications

Spread over 3 floors, the dwellings have been carefully designed to ensure long term sustainable living for older people. All of the dwellings on the ground and 2nd floors have a level access shower and those on the 1st floor have a step in shower. All floors are fully accessible by means of a lift.

There are 4 similar types of dwelling available and the drawing opposite outlines a typical layout.

The Finish

These tastefully decorated dwellings have undergone an extensive refurbishment programme and will come complete with new kitchens, bathrooms and wardrobes.

Energy Efficient

The dwellings have been designed to meet the highest (Passive House) energy standard and enjoy many features that will reduce the cost of heating the home. These include: additional external wall insulation, treble glazed windows and doors, improved natural gas central heating system and energy efficient lighting.

Cost Savings

These energy efficient dwellings will ensure annual savings of over €1,000 on the heating costs of your average 'C' rated 3 bedroom home.

Maintenance and Upkeep

In addition to the weekly rent, a weekly payment of €20 will apply and will cover all your heating bills, bin charges, window cleaning costs, boiler service charge as well as the upkeep of the communal areas.

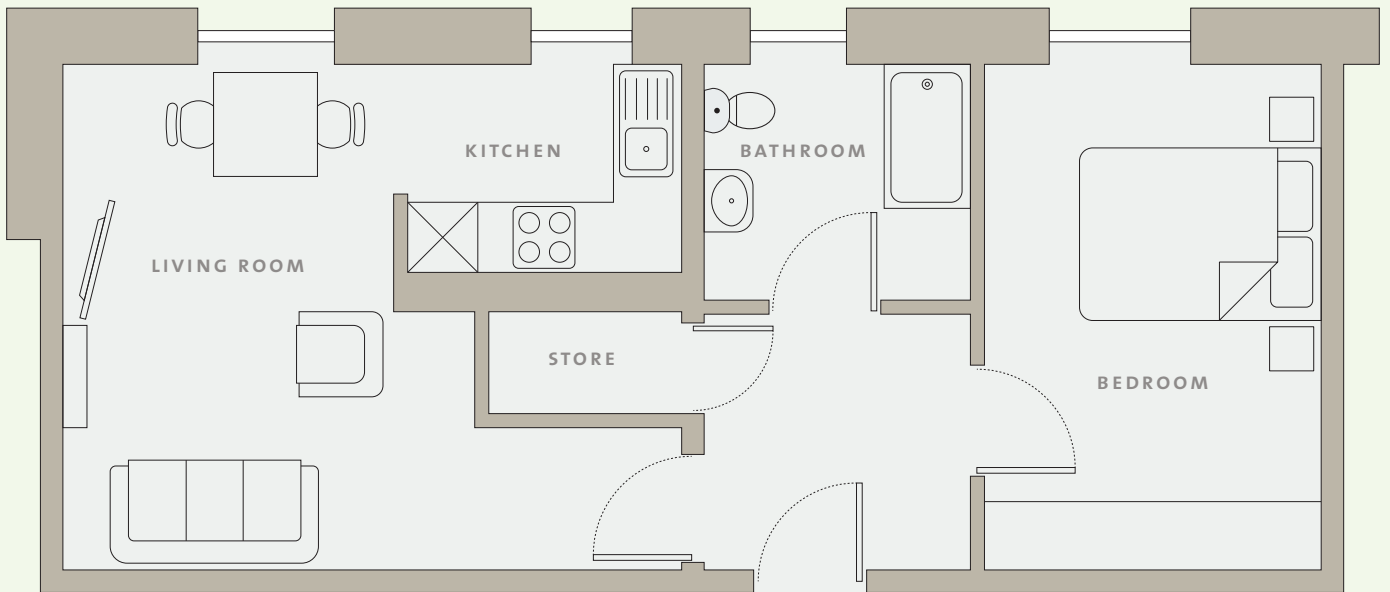
Transport

The area is serviced by excellent public transport links with the 45A, 7 and 7A bus routes providing easy access to Dún Laoghaire Dart Station, the City Centre and Bray.

ROCHESTOWN HOUSE



Typical Floor Plan



Quality of Life



"There is a great sense of community among the current residents of Rochestown Terrace and we are really looking forward to welcoming new residents to the area."

Bridget



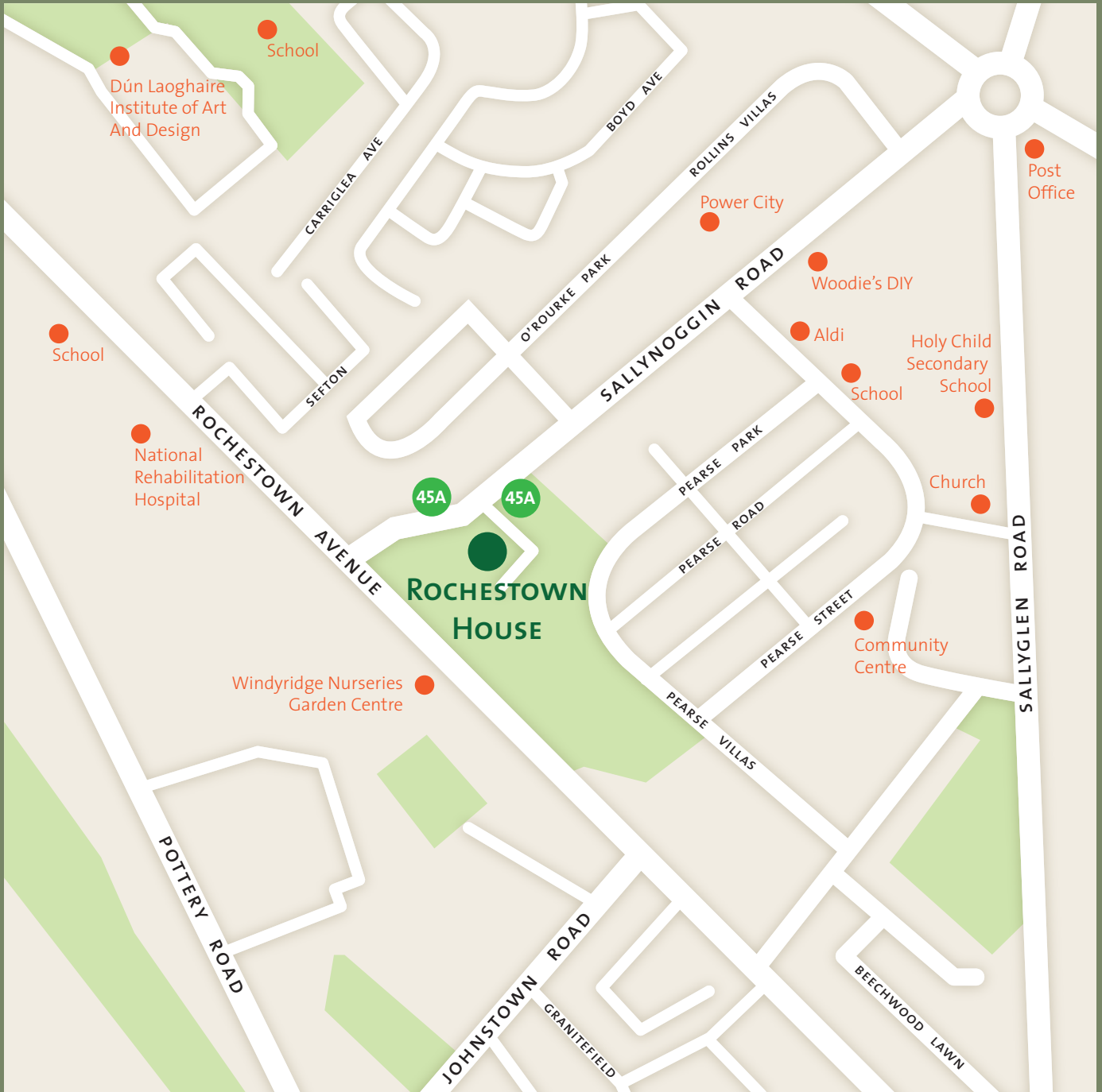
"I am really pleased to be living here in a modern, warm and comfortable apartment. Every detail has been considered to make living here as comfortable and enjoyable as possible."

Des



"This is a great area to live in. It is nice and quiet with easy access to the local shops and a good bus service that brings you down into Dún Laoghaire."

Ann



Location



Comhairle Contae County Council

For more information about
Rochestown House or the general
downsizing process contact:

Housing Allocations

Dún Laoghaire-Rathdown County Council
County Hall, Marine Road, Dún Laoghaire

EuroPHit

TEL 01 205 4828

EMAIL housingallocations@dlrcoco.ie

WEB www.dlrcoco.ie