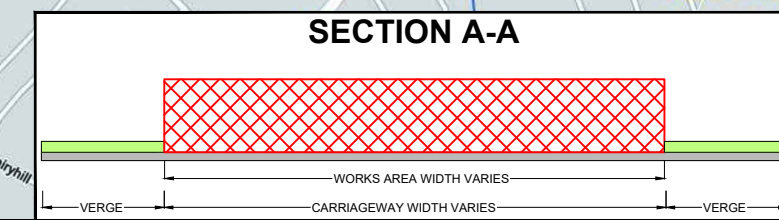
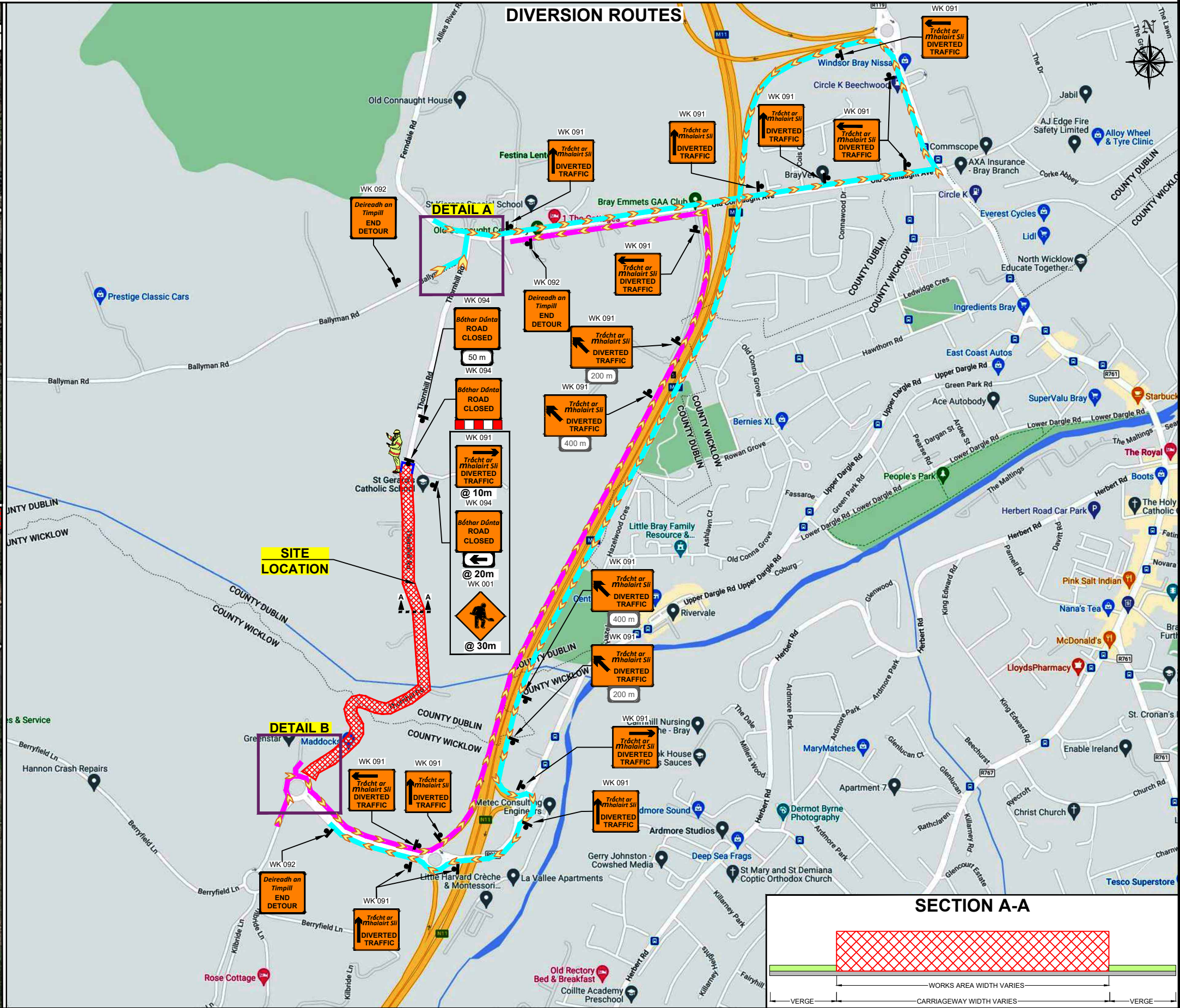
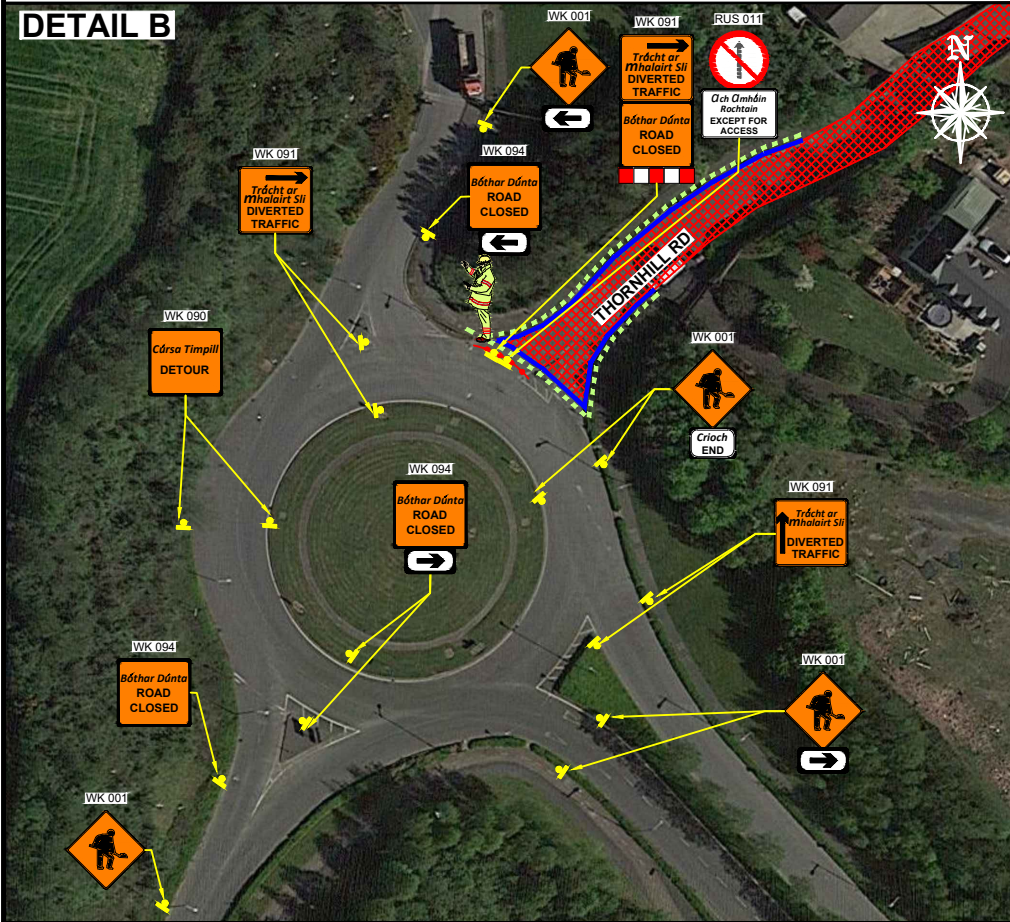
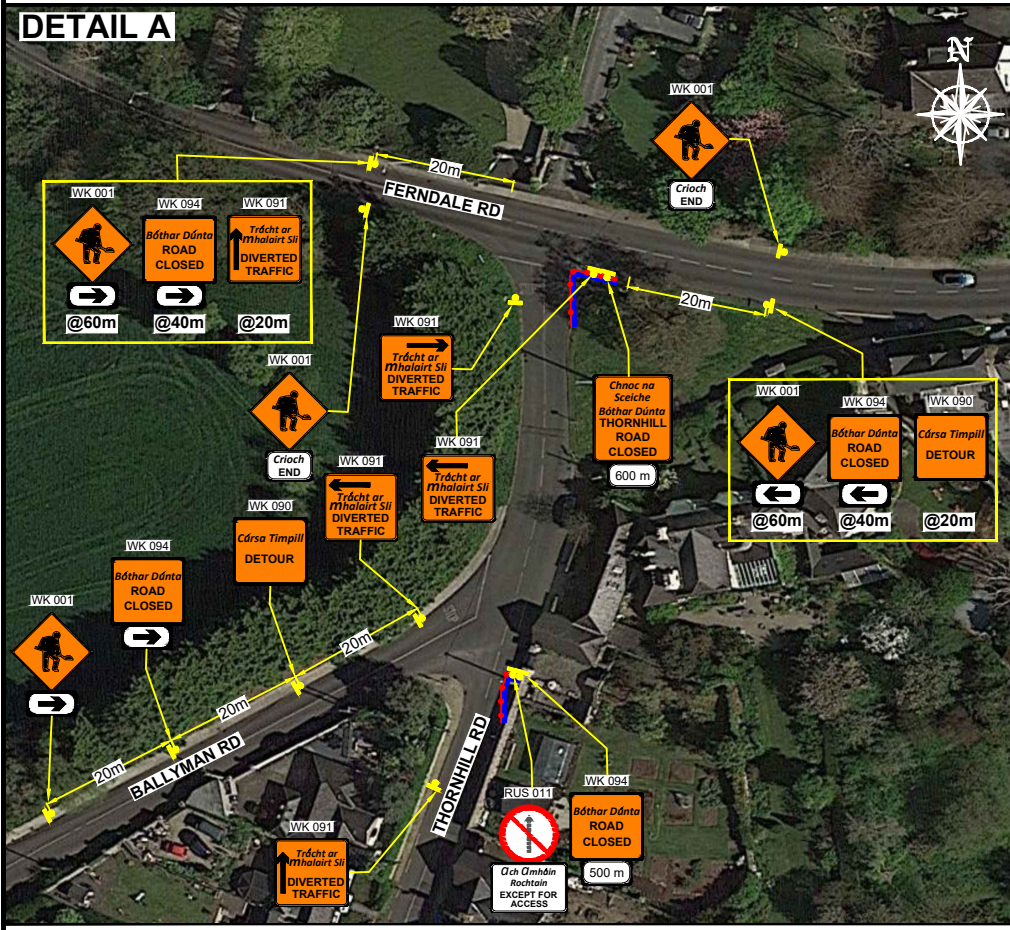


THORNHILL RD, OLDCONNAUGHT, CO. DUBLIN - ROAD CLOSURE TM LAYOUT



DESIGN PARAMETERS				SAFETY ZONE			TEMPORARY SIGNS			CONE SPACING AND SIZE				RATE OF TAPER		LAMP SPACING		TRAFFIC MANAGEMENT SYSTEM			LEGEND	GARY KEVILLE TRAFFIC MANAGEMENT LTD.			CLIENT:			
Road Lvl(Sub)	Roadworks Type	Speed Limit (km/h)	Min. Lane Width (m)	Longitudinal (m)	Lateral (m)	Set Back (m)	Distance (m)	Number	Min. Size (mm)	Sign Visibility (m)	Longitudinal (m)	At Tapers	Min. Height (mm)	Taper at Lane (m)	Taper at Lane (m)	At Tapers	Longitudinal (m)	Method	Coned Area Length (m)	Max. Traffic Flow (veh/h)	TRAFFIC CONES	SCALE	PROJECT TITLE:	DWG. No.:				
1 (iii)	A	50	3.00	5	0.5	-	20	2	600	50	3	3	750	1 in 5	1 in 5	6	6	Road Closure	n/a	n/a	•••••	NTS	OLDCONNAUGHT / WOODBROOK WATER SUPPLY SCHEME	JC 5127-00-02				
																					—	DATE:	STAGE:	CONSTRUCTION	DWG. No.:	JC 5127-00-02	REV:	3

DESIGNED:	BJ	SCALE:	NTS	PROJECT TITLE:	OLDCONNAUGHT / WOODBROOK WATER SUPPLY SCHEME
DRAWN:	BJ	DATE:	16-03-2022	DRAWING NAME:	THORNHILL RD, OLDCONNAUGHT, CO. DUBLIN - ROAD CLOSURE TM LAYOUT
VERIFIED:	SC	STAGE:	CONSTRUCTION	DWG. No.:	JC 5127-00-02
APPROVED:	SC	DATE:	16-03-2022	REV. No.:	3

Rev. No.:	Revision Details	Rev. Date:	Designed:	Drawn:	Verified:	Approved:
1.	Amended diversion.	28-03-2022	BJ	BJ	SC	SC
2.	Amended diversion.	05-01-2023	BJ	BJ	SC	SC
3.	Extended works area..	22-02-2023	BJ	SS	SC	SC

NOTES:

- ALL INFORMATION CONTAINED IN THIS DRAWING SHOULD BE CHECKED AND VERIFIED BY CONTRACTOR PRIOR TO ANY STAGE OF CONSTRUCTION.
- ALL WORKS ARE TO BE CARRIED OUT IN ACCORDANCE WITH LOCAL AUTHORITY REQUIREMENTS AND ARE TO BE INCLUDED IN THE SITE-SPECIFIC SAFETY & HEALTH PLAN.
- CONTRACTOR TO CARRY OUT A SITE RISK ASSESSMENT PRIOR TO THE INSTALLATION OF ANY TRAFFIC MANAGEMENT PLAN TO ENSURE THAT CONDITIONS REFLECT THOSE CONSIDERED FOR DESIGN POST SUBMISSION.
- CONTRACTOR SHALL BE RESPONSIBLE FOR THE PROVISION OF RAMP ACCESS AT ANY CHANGE IN ROAD SURFACE LEVEL WHERE TRAFFIC RUNS ON A TEMPORARY SURFACE.
- THIS TRAFFIC MANAGEMENT PLAN MAY ONLY BE IMPLEMENTED BY A TTOS WHO MUST CARRY OUT A RISK ASSESSMENT BEFORE IMPLEMENTATION. TTOS MUST BE IN POSSESSION OF CSCS CARD 'SIGNING, LIGHTNING AND GUARDING AT ROAD WORKS' CONSTRUCTION REGULATIONS 2006.
- EXACT SIGN POSITIONS TO BE AGREED ON SITE.
- ACCESS TO BE MAINTAINED TO ALL DWELLINGS / BUSINESSES AT ALL TIMES.
- SITE INSPECTIONS AND MAINTENANCE OF THE TRAFFIC MANAGEMENT LAYOUT IS TO BE CONDUCTED ON A DAILY BASIS TO ENSURE THE SAFETY AND INTEGRITY OF THE DESIGN.
- ALL TEMPORARY FOOTWAYS MUST HAVE A GOOD QUALITY, EVEN SURFACE AND BE MAINTAINED FREE FROM OBSTRUCTION.
- PEDESTRIANS TO BE PROTECTED FROM WORKS AREA BY PEDESTRIAN BARRIER SYSTEM.
- TM OPERATIVES TO MAINTAIN CLOSURE. MARSHAL PEDESTRIANS AND INFORM DRIVERS ABOUT DIVERSION ROUTES DURING WORK HOURS.

WARD & BURKE

Copyright Notes: THIS DRAWING IS THE PROPERTY OF GARY KEVILLE TRAFFIC MANAGEMENT. THE DESIGN INFORMATION CONTAINED HEREIN IS STRICTLY CONFIDENTIAL. THIS DOCUMENT IS NOT TO BE USED, REPRODUCED, DISCLOSED OR CIRCULATED IN WHOLE OR IN PART WITHOUT THE PRIOR WRITTEN CONSENT IN EACH INSTANCE OF GARY KEVILLE TRAFFIC MANAGEMENT. © GKTM 2022