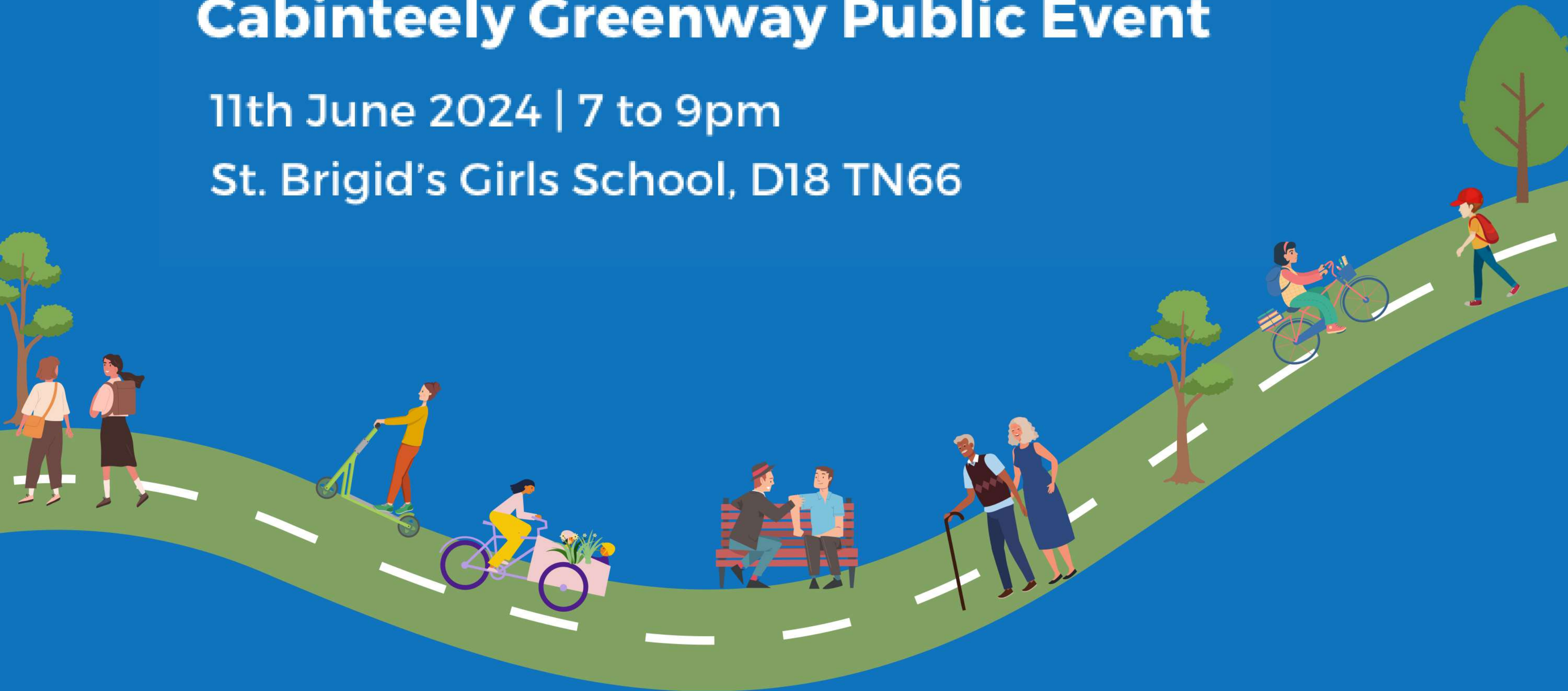


Cabinteely Greenway Public Event

11th June 2024 | 7 to 9pm

St. Brigid's Girls School, D18 TN66



Event Agenda	
Welcome & Registration	19.00
Presentation from DLR and DBFL Engineers	19.10
Facilitated Discussion - Breakout Group Activity	19.50
Next Steps and Moderated Q&A	20.30

CABINTEELY GREENWAY

Public Workshop

11th June 2024





Background to Project

- In 2015 a similar proposal was put forward, but was unsuccessful.
- Our approach to how we get places has changed
- Climate Change Emergency
- We have learned from the feedback received from the 2015 proposal

Benefits

- Environmental benefits
- Health benefits
- Connectivity





Planning / Policy Context

The route corridor has been identified in the Greater Dublin Area Cycle Network Plan 2022, the DLR Cycle Network Map, and the County Development Plan 2022-2028.

Obligations to adhere to national & regional strategies & policies.

- National Planning Framework,
- Smarter Travel: A Sustainable Transport Future 2009-2020,
- NTA Statement of Strategy 2018-2022,
- National sustainable Mobility Policy,
- Ireland Climate Action Plan,
- National Cycle Policy Framework



Enhance your Health & Wellbeing

A study concluded that people who commute by bike have a:

32% lower risk of dying from heart disease

40% lower risk of dying from cancer

(Celis-Morales, C A et al, 2017)



Protect yourself from
Air Pollution



Associated with
poor physical &
mental health

(World Health Organisation)

Causes 376,000
premature
deaths annually
in the EU



By walking 30 min. a day you can...



Sleep
Quality
Mood



Depression
Stress
Anxiety

Protect the Environment



Transport makes up 19% of greenhouse gas emissions in Ireland. ([EPA, 2022](#))

Passenger cars were responsible for approximately 53% of road transport emissions in 2021. (EPA, 2021)

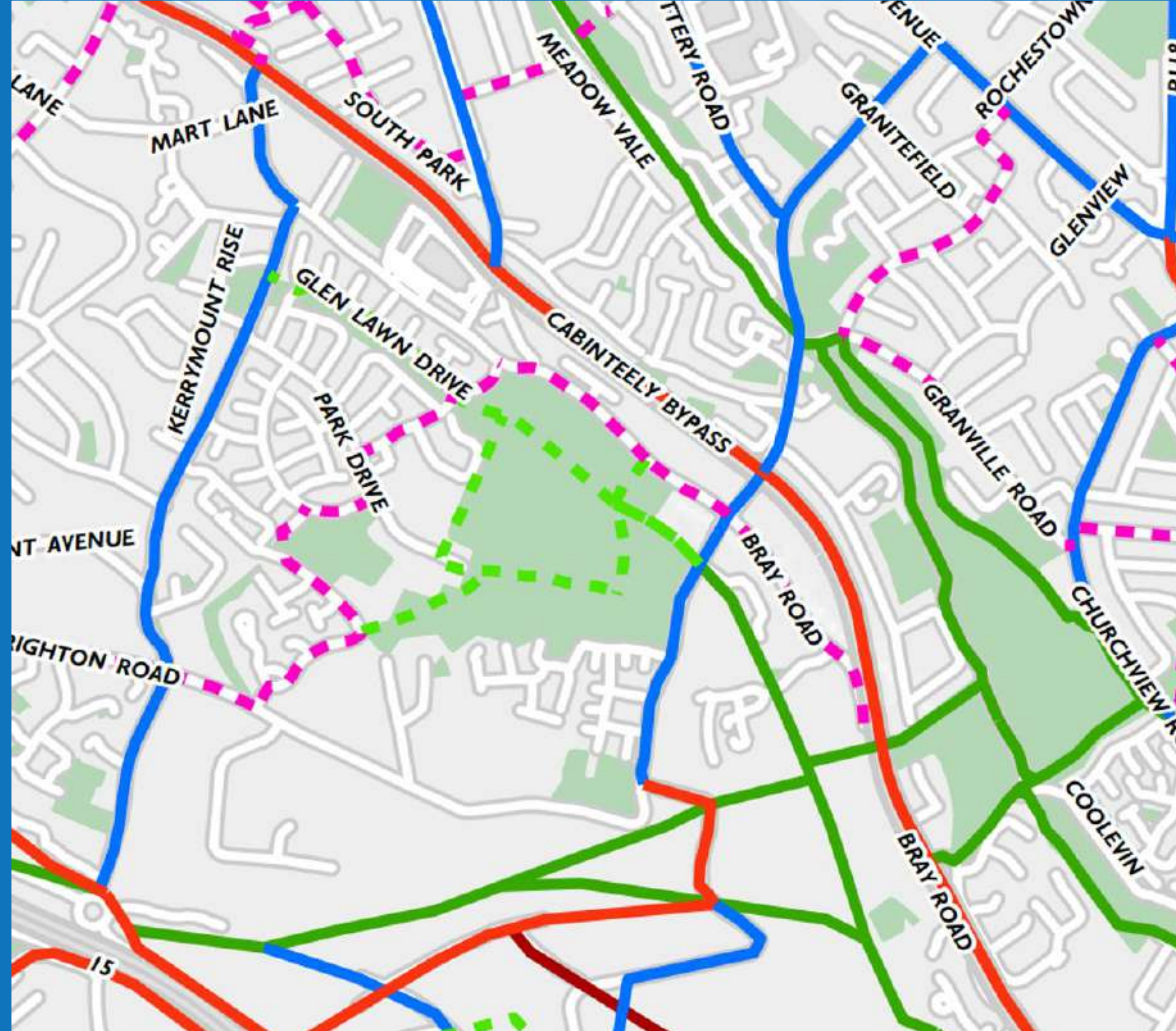


Despite an unprecedented decline in road transport activity as a consequence of lockdown measures in 2020, transport emissions rebounded in 2021, growing by 8 % (IEA, 2021).

The **Irish National Sustainable Mobility Policy** aims to set out a framework to achieve a **51% reduction in carbon emissions by the 2030.**

Support Ireland's goal to half its greenhouse gas emissions by 2030!

Scheme Rationale



Sustainability

Connectivity

Inclusivity



Scheme Objectives



- 1) **Enhance connectivity between Cornelscourt & Cherrywood** for pedestrians and cyclists to encourage more walking & cycling trips
- 2) **Improve safety for people walking, wheeling and cycling** by maximising segregation of pedestrians / cyclists from vehicular traffic
- 3) **Reduce reliance on car trips** by providing sustainable alternatives for local trips



Scheme Objectives

- 4) Contribute to the achievement of **climate action targets** by catering for increased travel by walking and cycling
- 5) Improve **accessibility to public transport** by walking and cycling
- 6) Deliver a proposal that is holistic in its approach, focusing on **Nature Based Solutions and sustainability** where possible
- 7) To produce a design that is **sympathetic to all environmental issues**

Blackrock Park – Coastal Mobility Route



Emergency Vehicles using cycleways





The Consultation Process so far

5 workshops:

- Residents workshop - **Nov 23**
- Community & businesses workshop - **Dec 23**
- Primary school workshop - **Jan 24**
- Secondary school workshop - **Jan 24**
- Disability advocacy group workshop - **Feb 24**

Total of 104 attendees

Workshops focused on:

1) Safety, 2) Design & Use, 3) Greenway Route Options/Layout





The purpose of today's event

- To present the proposed greenway project before advancing to submit planning permission otherwise known as the Statutory Part 8 consultation phase.
- Discuss any general comments, questions, or clarifications
- To gain further feedback on the options presented within the scheme
- To gain further feedback on the topics of:
 - Design and Use
 - Safety
 - Accessibility & Inclusivity
- Ensure all attendees have an opportunity to submit their feedback

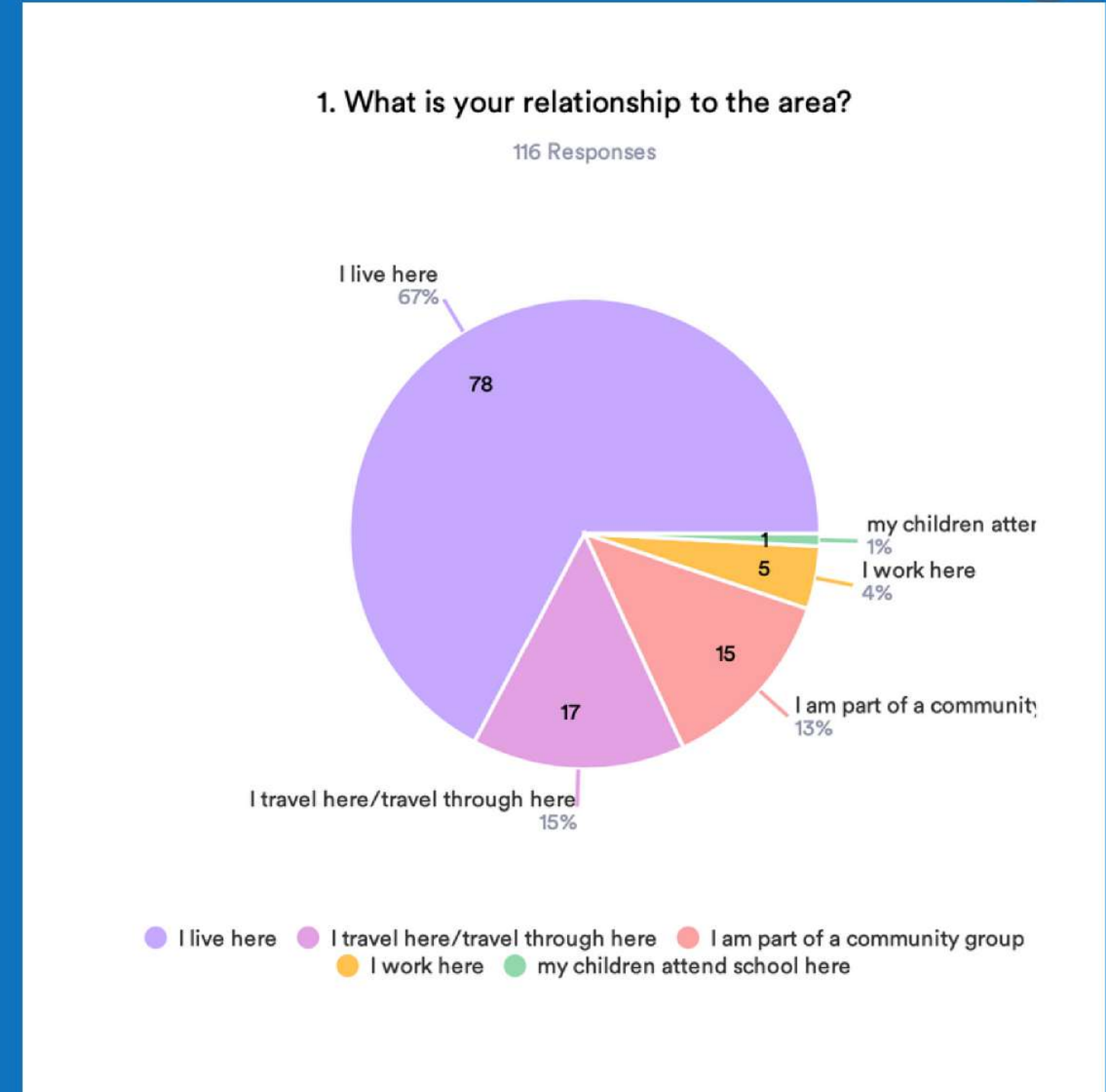




Registration Survey Summary

Groups In Attendance:

- Park Residents Association
- Cabinteely Residents Association
- Brennanstown Residents Association
- Kerry Mount Residents' Association
- Kill Abbey Residents Association
- Beechpark Residents
- Cherrywood Neighbourhood Watch
- Cabinteely Tidy Towns Team
- Johnstown Residents Association
- Killart Residents Association
- Holmwood/Lambourne Wood



Registration Survey Summary - Key Themes



1. Environmental Impact
2. Safety and Security
3. Route and Connectivity
4. Purpose and Justification
5. Impact on Residents
6. Timeline and Implementation
7. Support and Opposition
8. Infrastructure and Facilities



Key Findings From Consultation To Date





Key Findings

Safety



- Need for well-designed lighting that ensures visibility without causing harm to wildlife.
- Traffic concerns including speed limits and potential conflict between cyclists and pedestrians
- Addressing anti-social behaviour and ensuring safety in narrow locations





Key Findings Design & Use



- Preference for natural, biodiverse, and inclusive design features
- Maintaining existing trees and incorporate wildflower planting
- More seating. Accessibility features like armrests and hard surfaces.
- Natural, fun, and colourful elements





Key Findings

Greenway Route/Layout



- Discussions focused on path design, markings, and surfaces
- Concerns re. visual contrast for individuals with visual impairments and the inclusion of shared paths.
- Potential impact on existing environment, - noise pollution, disruption of natural habitats, disruptions during construction
- Positivity around improved local connectivity
- Excitement about environmental benefits of the project





Key Findings

Accessibility and Inclusivity



- Disability Advocacy Workshop provided comprehensive input from disability group representatives.
- Noteworthy points:
 - Importance of contrasting path colours
 - Considerations for visual impairments
 - Standardisation in layouts.
 - Accessibility of seating, play areas, signage and shelter
- Need for inclusive design and post-design consultation with disability groups.





Next Consultation Steps

- Full report will be published on DLR website including feedback from today's event
- Regular updates will be posted to the Cabinteely Greenway project page on the DLR website
- All those who registered during consultation events will be notified via email on further consultation stages
- Public will be invited to make submissions on final plans during Part 8 process (dates TBC)



<https://www.dlrcoco.ie/environment-climate-change/active-travel/cabinteely-greenway>

CABINTEELY GREENWAY COMMUNITY ENGAGEMENT

Q4 2023 - Q1 2024

Design Workshops

Phase 1: Key stakeholder and community member workshops on the options for the route and design features along the greenway

Q3 2024

Statutory Consultation

Phase 3: Statutory consultation with public meeting and webinar to present designs and explanation of the next steps

Q1 - Q2 2024

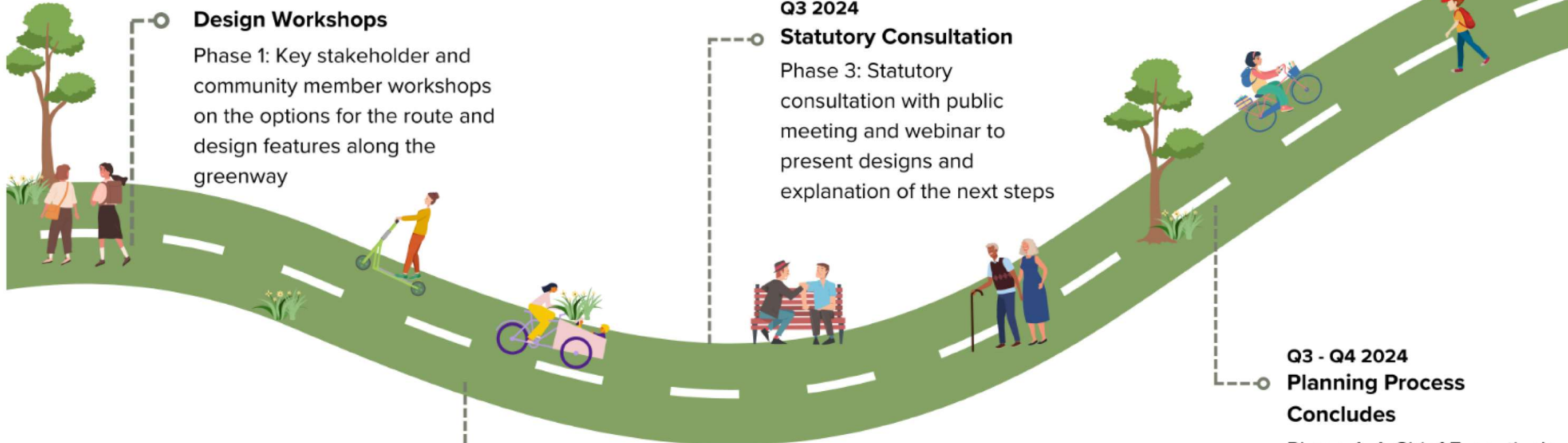
Preliminary Greenway Design

Phase 2: Public Consultation Workshop

Q3 - Q4 2024

Planning Process Concludes

Phase 4: A Chief Executive's report based on the public consultation report is prepared & presented to the elected members for their consideration.



CABINTEELY GREENWAY

Draft Preliminary Design

11 June 2024



Presentation Structure

1. Proposed Route
2. Draft Preliminary Design
3. Next Steps



Proposed Route



Proposed Route



Cornelscourt Village

Section A: Cornelscourt Hill Road

Section B: Glen Lawn Drive

Cornelscourt Hill Road

N11 Bray Road

Cabinteely Park

Section C: Cabinteely Park

Cabinteely

Brennanstown Road

Section D: Brennanstown

Kilbogget Park



Draft Preliminary Design



Section A: Cornelscourt Hill Road



CONSTRAINED SPACE AT JUNCTION

ACCESS TO PROPERTIES

BUS TURNING MOVEMENTS

EXISTING TREES IN VERGE

EXISTING BUS STOP

EXISTING WALL / TREES

Gort Na Mona Drive

Old Bray Road

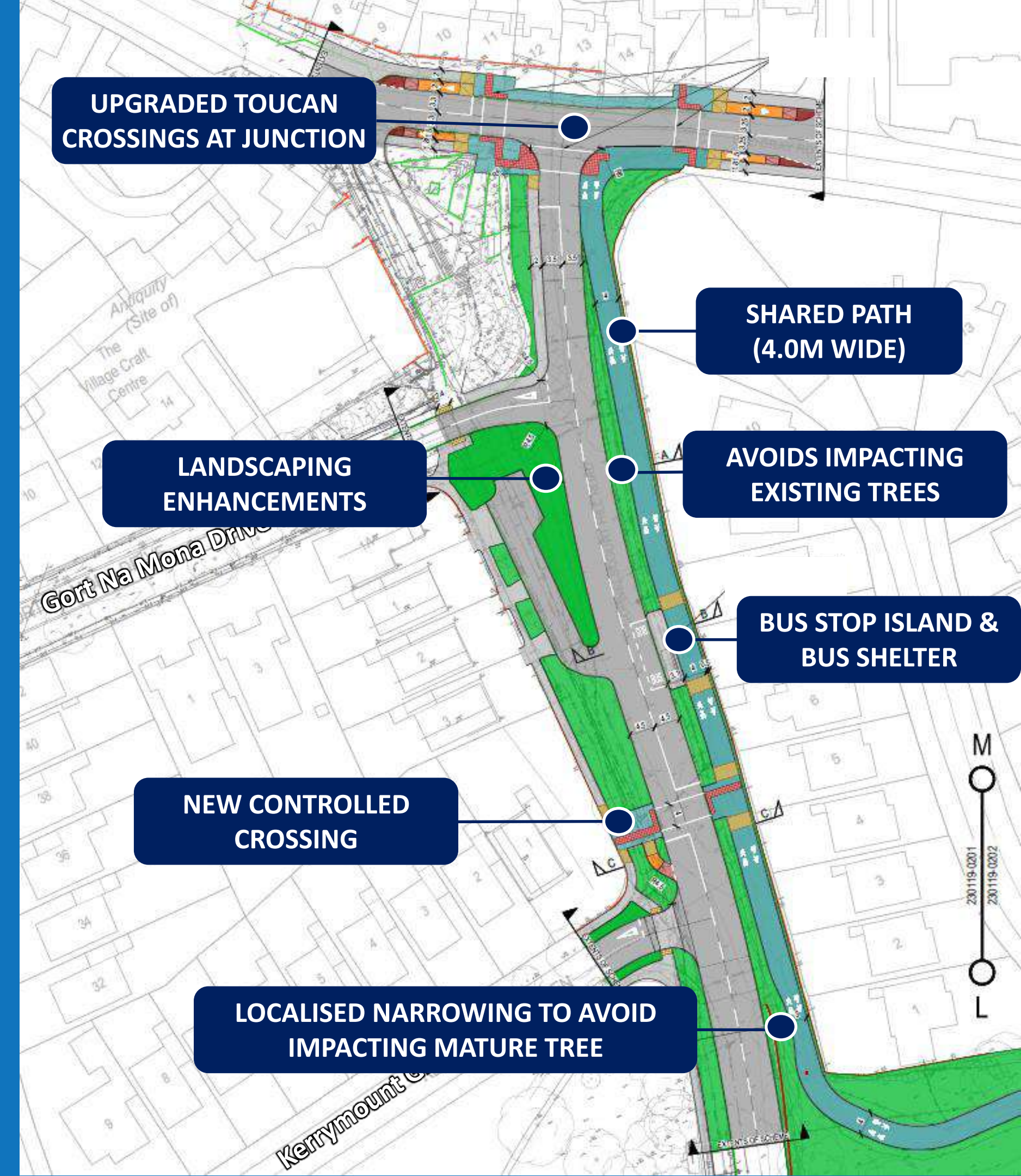
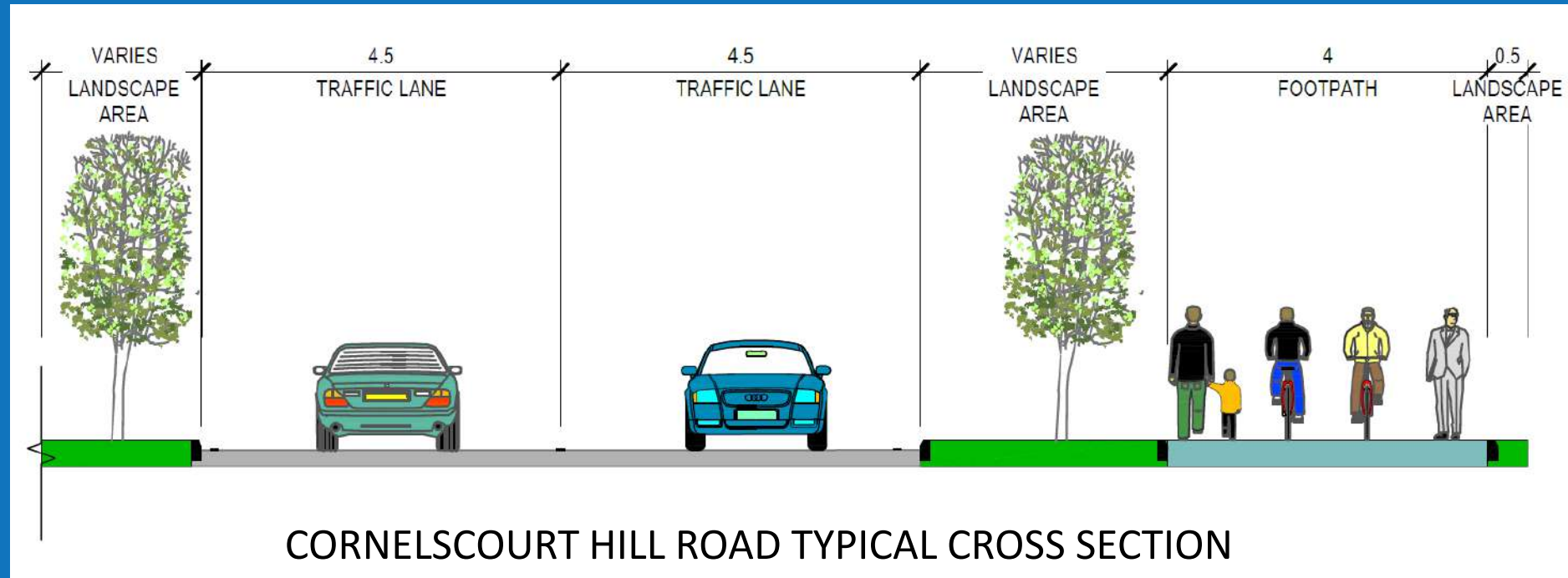
Cornelscourt Hill Road

Kerrymount Green

Glen Lawn Drive



Section A: Cornelscourt Hill Road



Section B: Glen Lawn Drive



Old Bray Road

Glen Lawn Drive

Park Drive

Glen Drive

ALTERNATIVE ROUTE REQUESTED BY LOCAL RESIDENTS

REDUCE / REMOVE THROUGH TRAFFIC

VEHICLE SPEEDS TOO HIGH

OVERSPILL CAR PARKING FROM ACTIVITIES IN THE PARK

SAFETY AT ROUNDABOUT

PROXIMITY TO STREAM

GRADIENTS

IMPACTS TO TREES AND GREEN SPACE

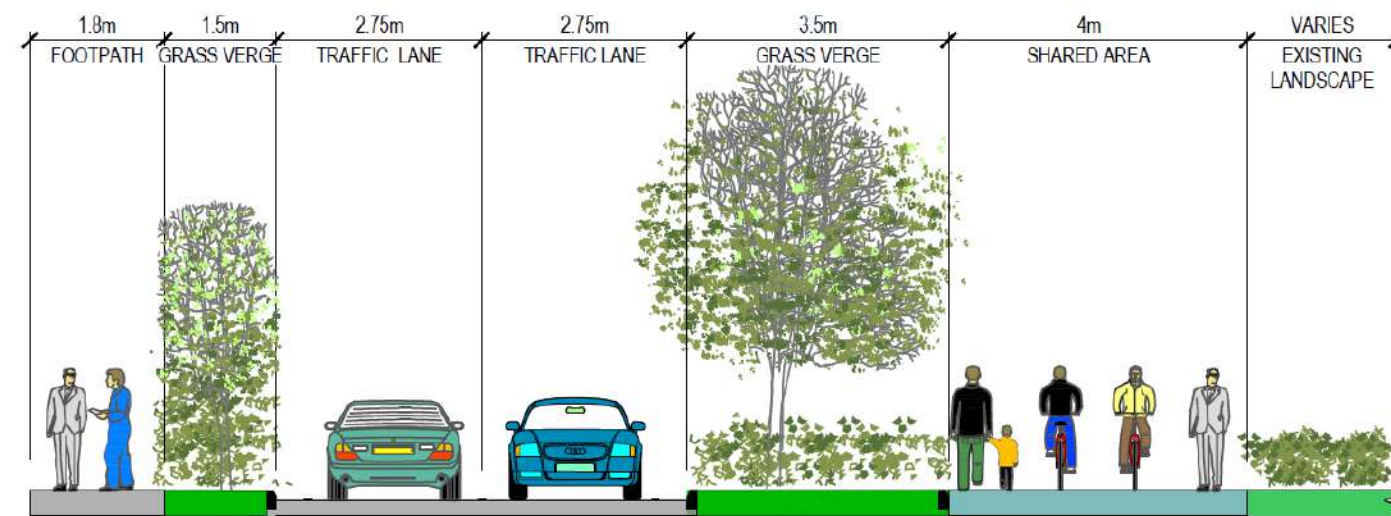
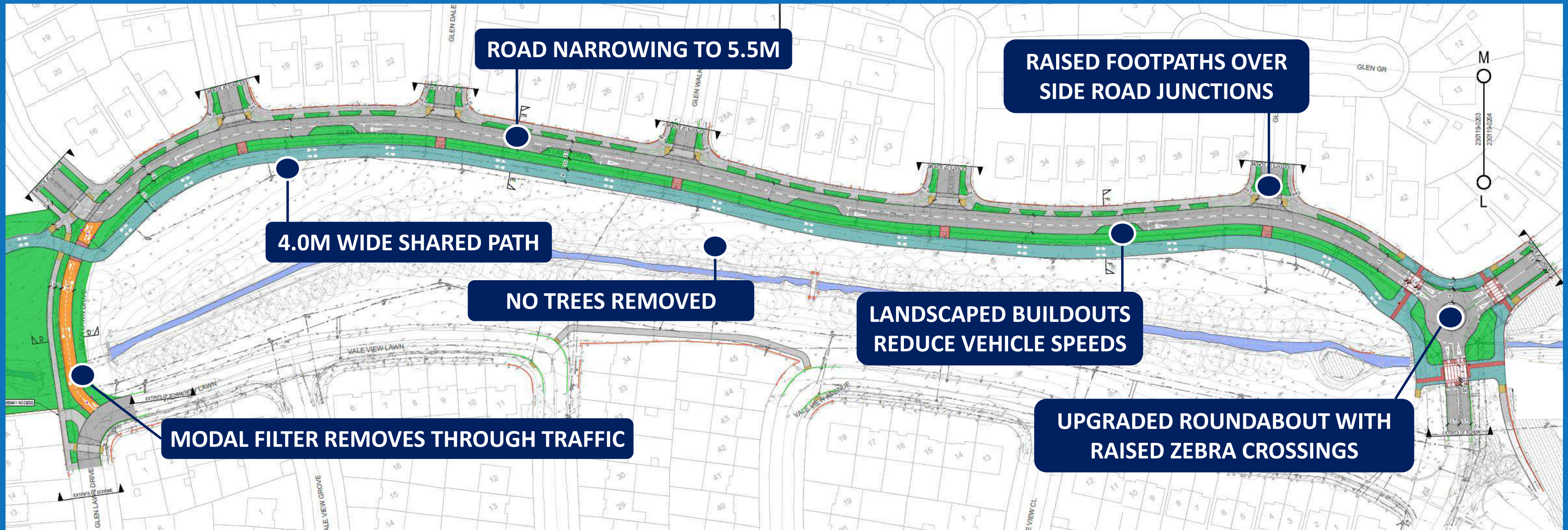
GRADIENTS

VOLUME OF VEHICLES



Section B: Glen Lawn Drive

Option 1 – Road Narrowing, Buildouts & Shared Path

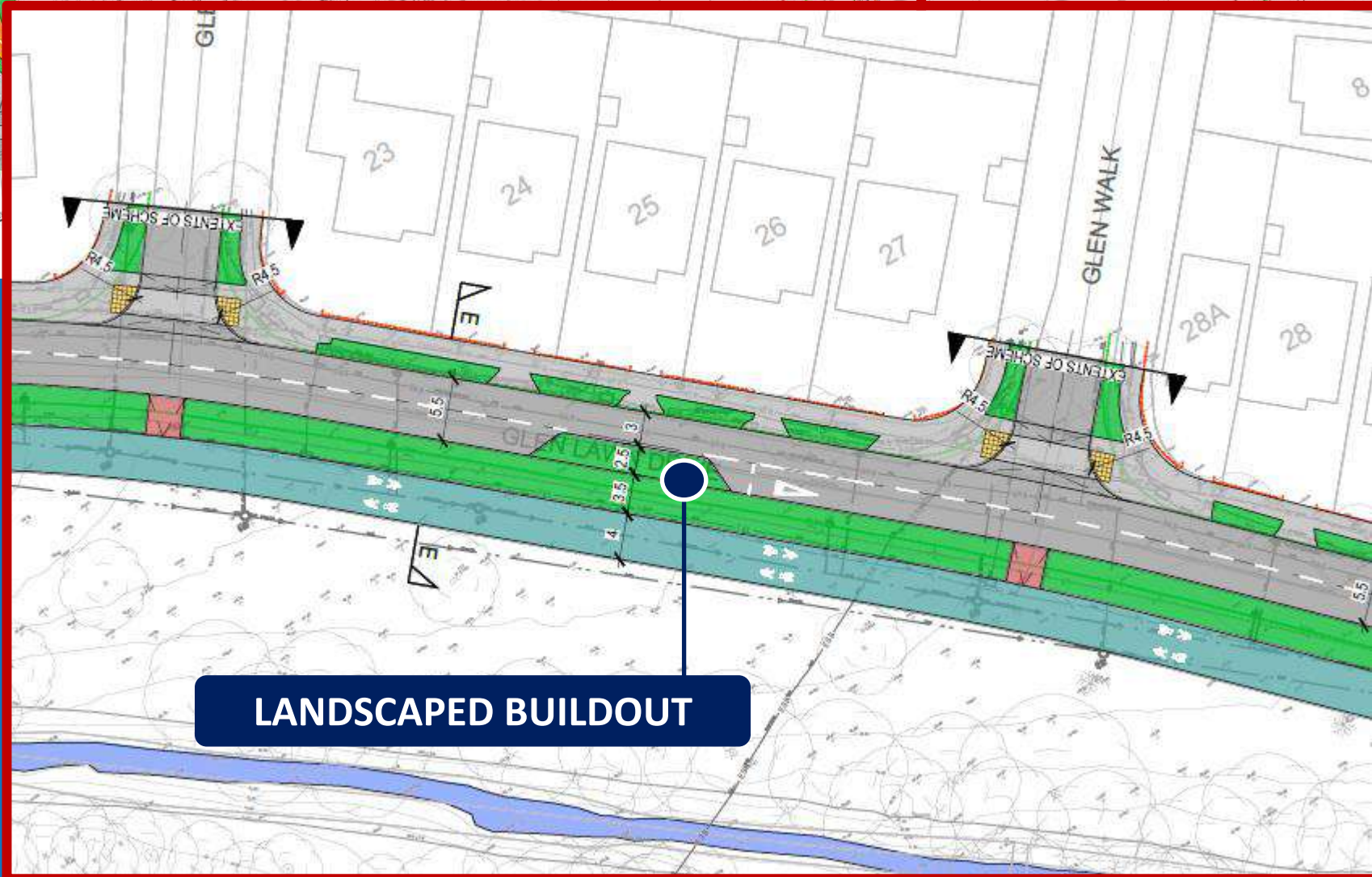
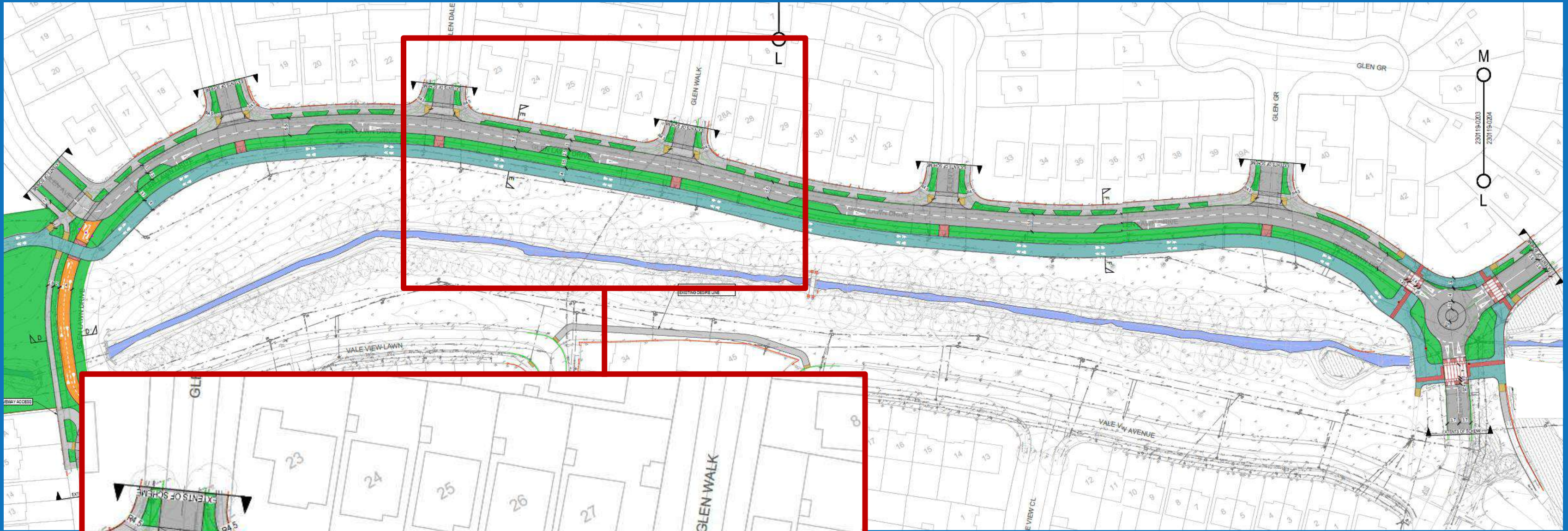


GLEN LAWN DRIVE TYPICAL CROSS SECTION

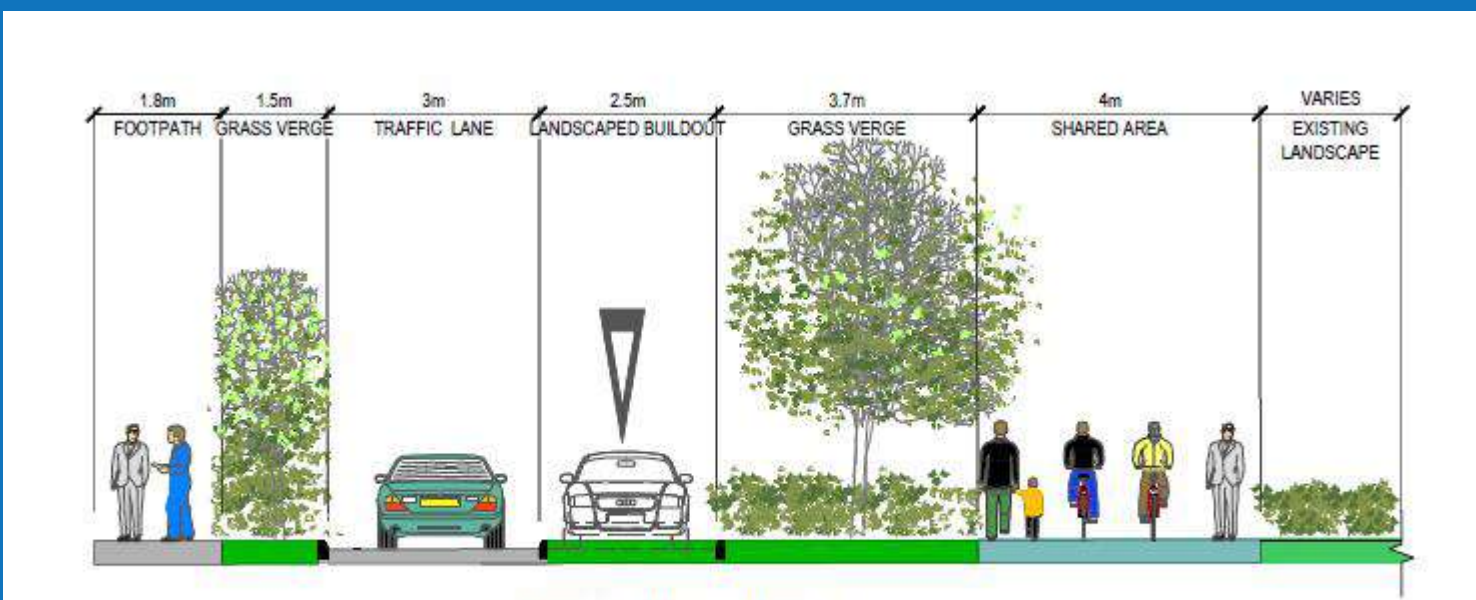


Section B: Glen Lawn Drive

Option 1 – Road Narrowing, Buildouts & Shared Path



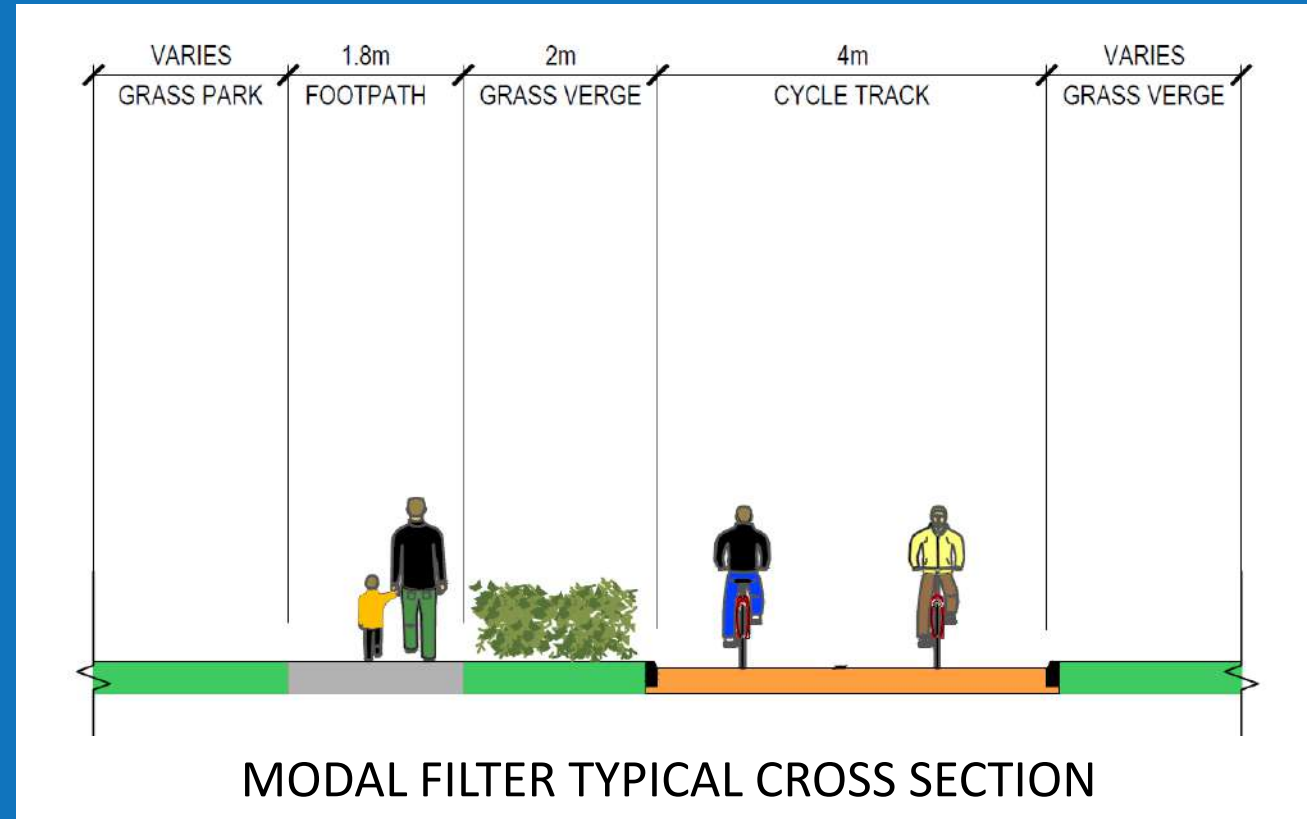
LANDSCAPED BUILDOUT



TYPICAL CROSS SECTION AT BUILDOUTS

Section B: Glen Lawn Drive

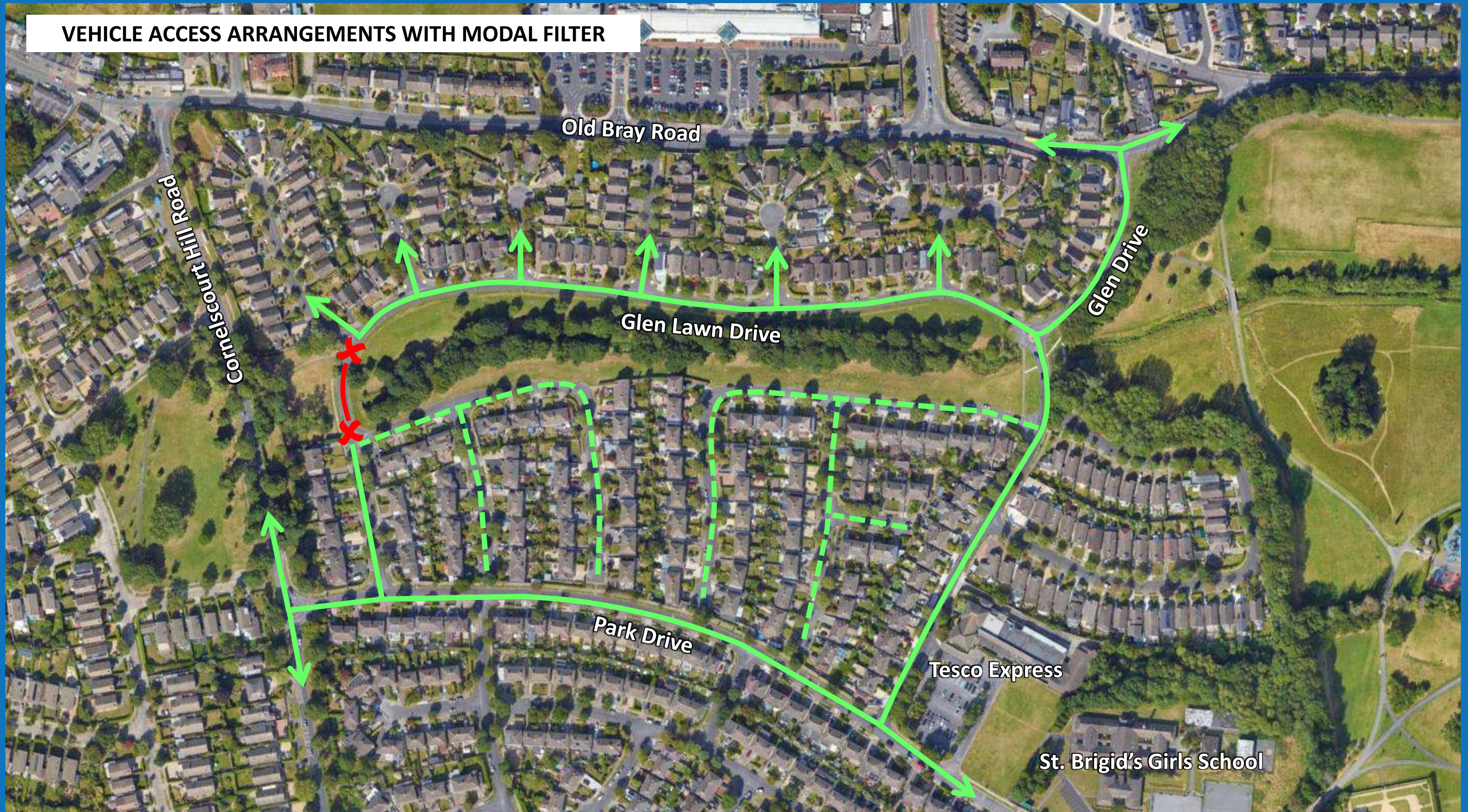
Option 1 – Road Narrowing, Buildouts & Shared Path



GLEN LAWN DRIVE MODAL FILTER
Prevents General Motor Traffic From
Passing Through This Point
Pedestrians, Cyclists and Emergency
Vehicles Can Still Pass Through This Point

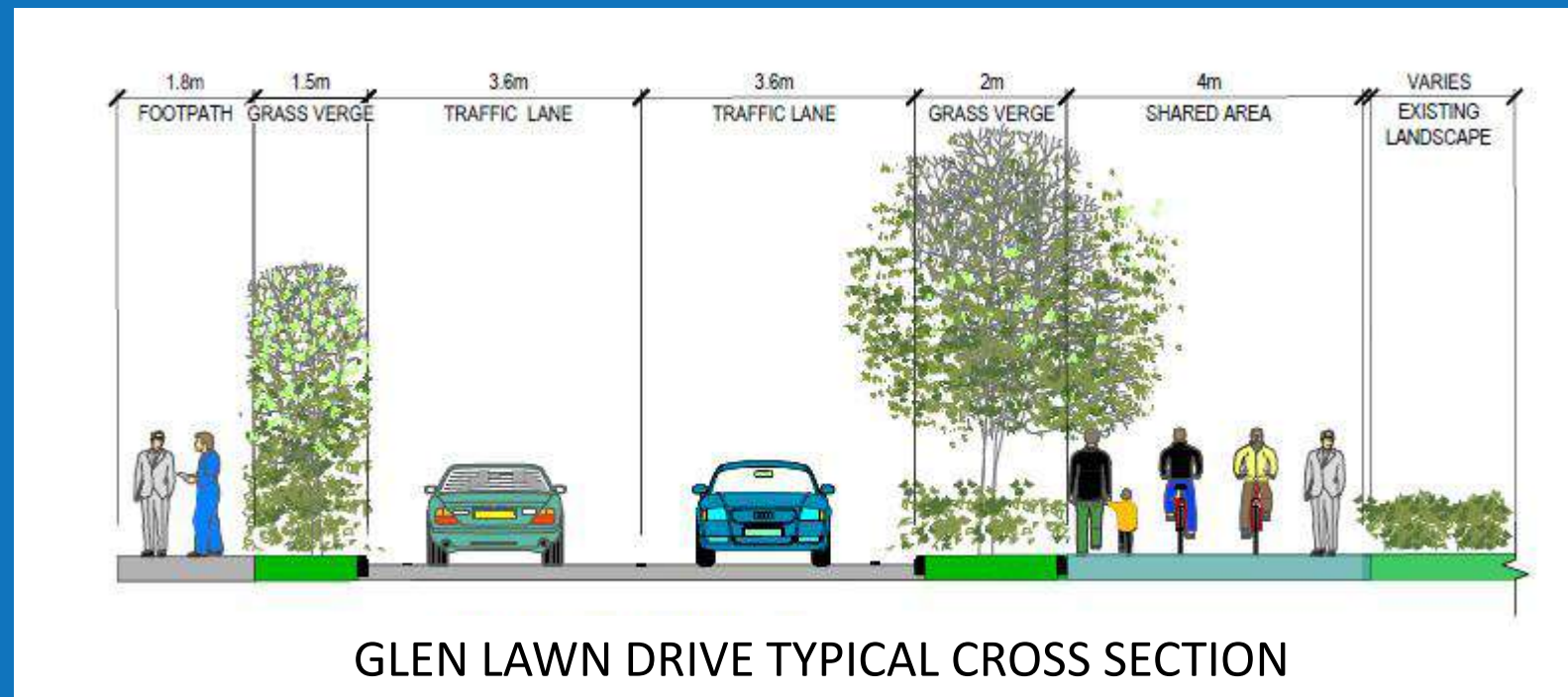
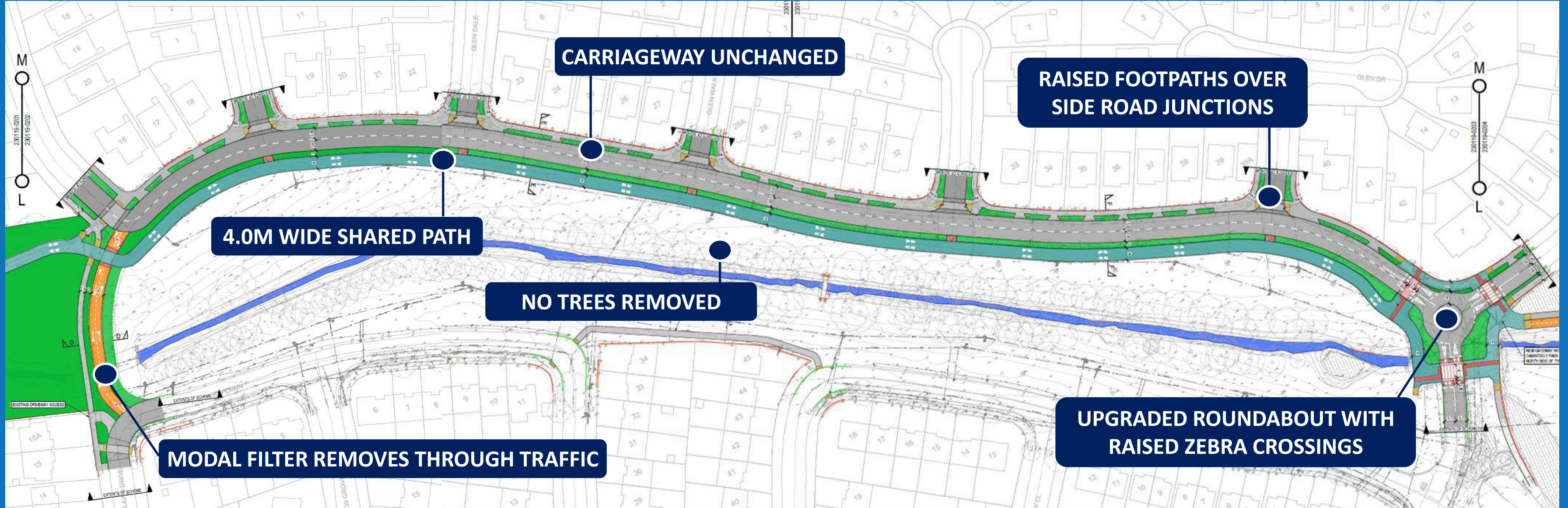
ARTISTS IMPRESSION OF MODAL FILTER





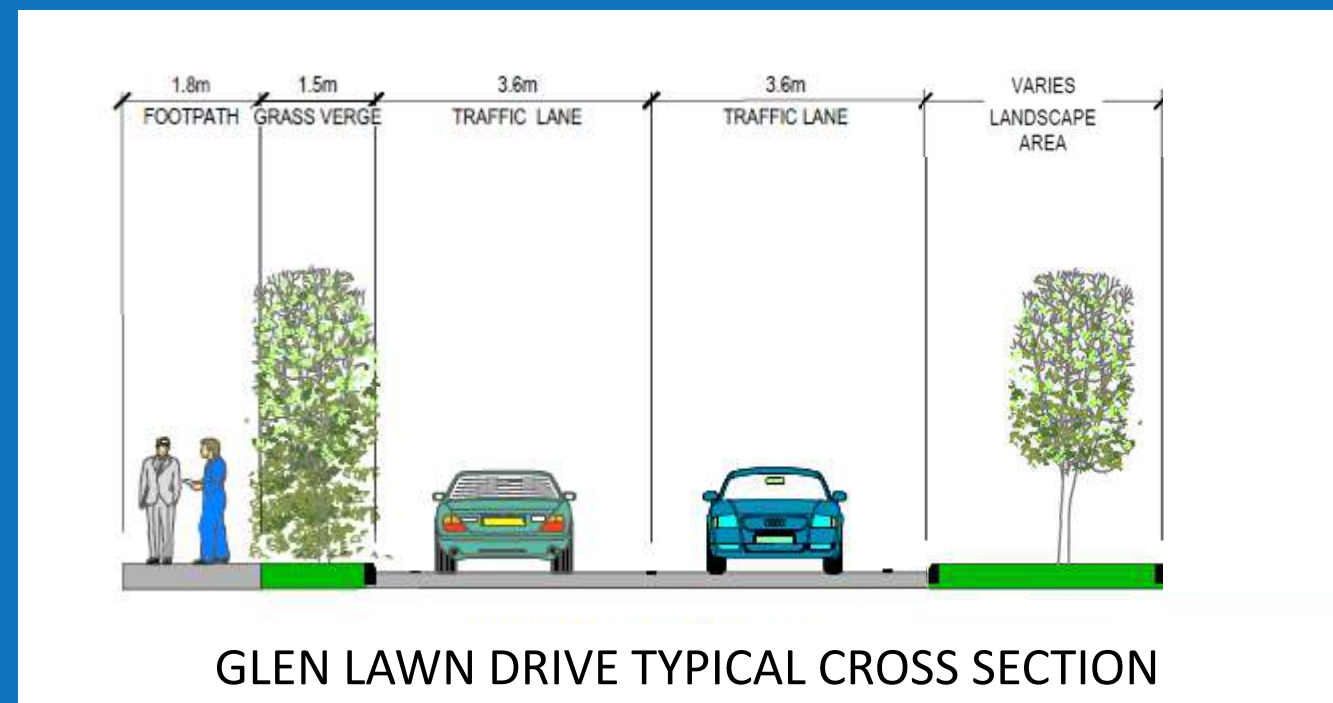
Section B: Glen Lawn Drive

Option 2 – Shared Path Only



Section B: Glen Lawn Drive

Option 3 – Traffic Management for Quiet Street



Section C: Cabinteely Park



INTERACTIONS WITH EXISTING USERS OF THE PARK

Football Pitches

DESIRE LINES / DIRECT ROUTES

GRADIENTS

IMPACT ON EXISTING WOODLAND

OPENING HOURS

Meadow

PROXIMITY TO STREAM

OPENING HOURS

IMPACT ON ESTABLISHED MEADOW

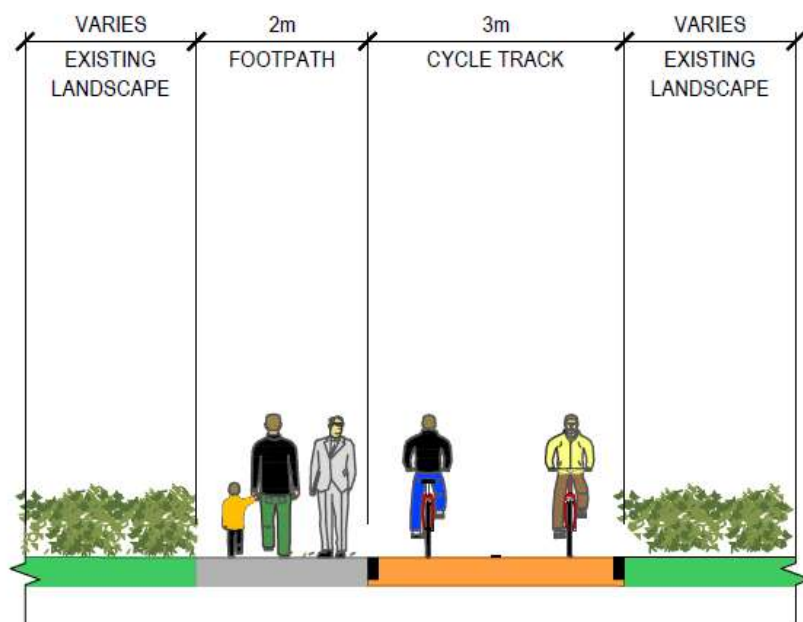
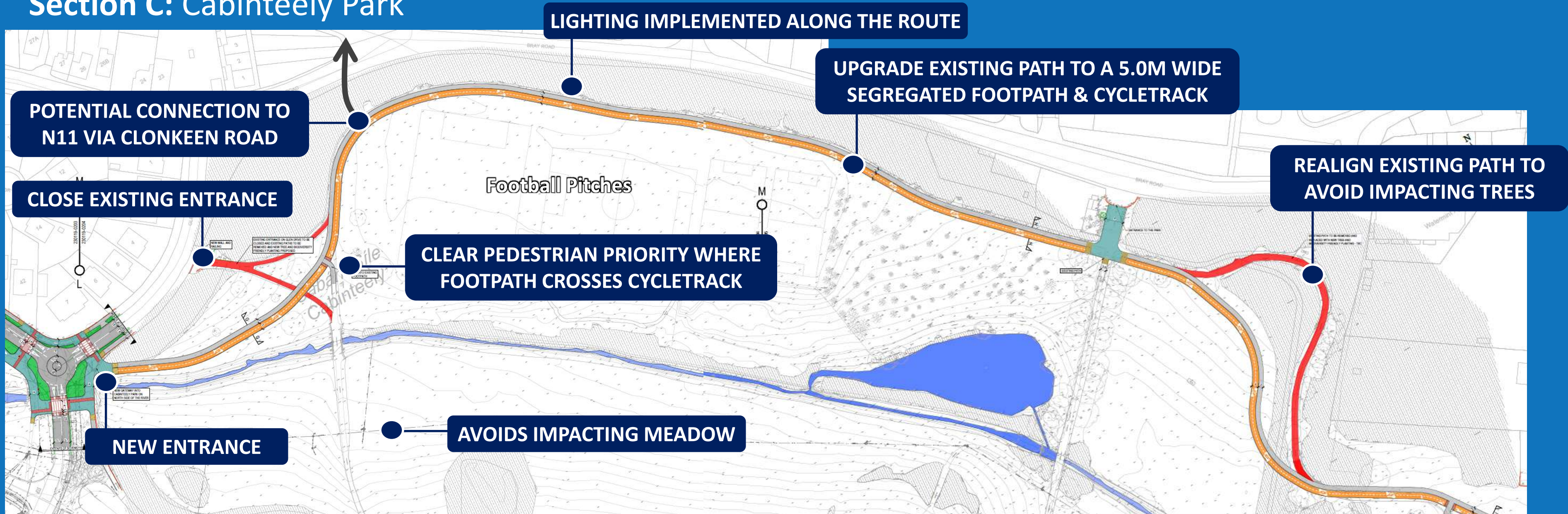
IMPACT ON ESTABLISHED MEADOW

IMPACTS ON VIEWS FROM CABINTEELY HOUSE

Cabinteely House



Section C: Cabinteely Park



CABINTEELY PARK TYPICAL CROSS SECTION



ARTISTS IMPRESSION OF LAYOUT THROUGH THE PARK



SIMILAR ARRANGEMENT AS BLACKROCK PARK

Section D: Brennanstown Road / Avenue



Cabinteely Village

Old Bray Road

Bray Road (N11)

Brennanstown Road

Druids Glen Road

HIGH VEHICLE SPEEDS ON
BRENNANSTOWN ROAD

SAFETY / SECURITY

SAFE CROSSING POINT

TIE IN TO WIDER CONNECTIONS

SAFE CROSSING POINT

IMPACTS TO TREES / ECOLOGY

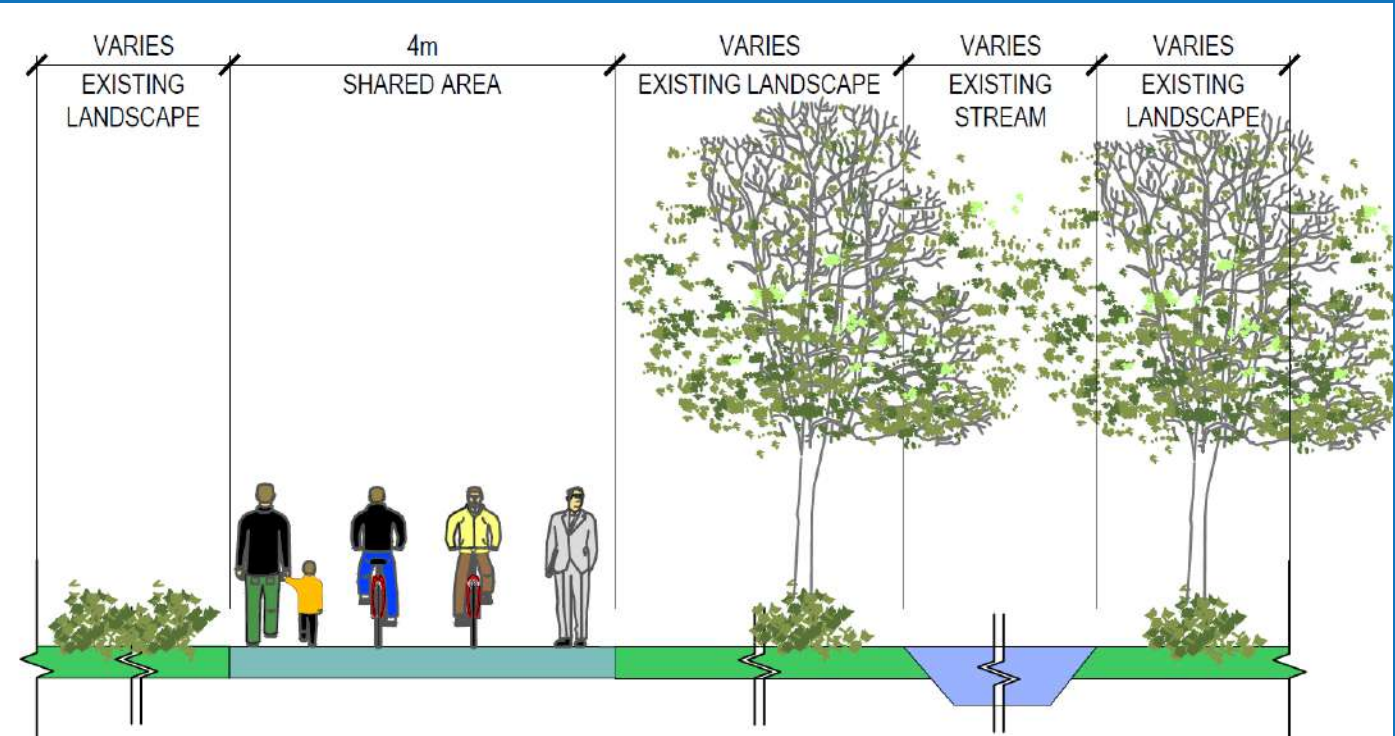
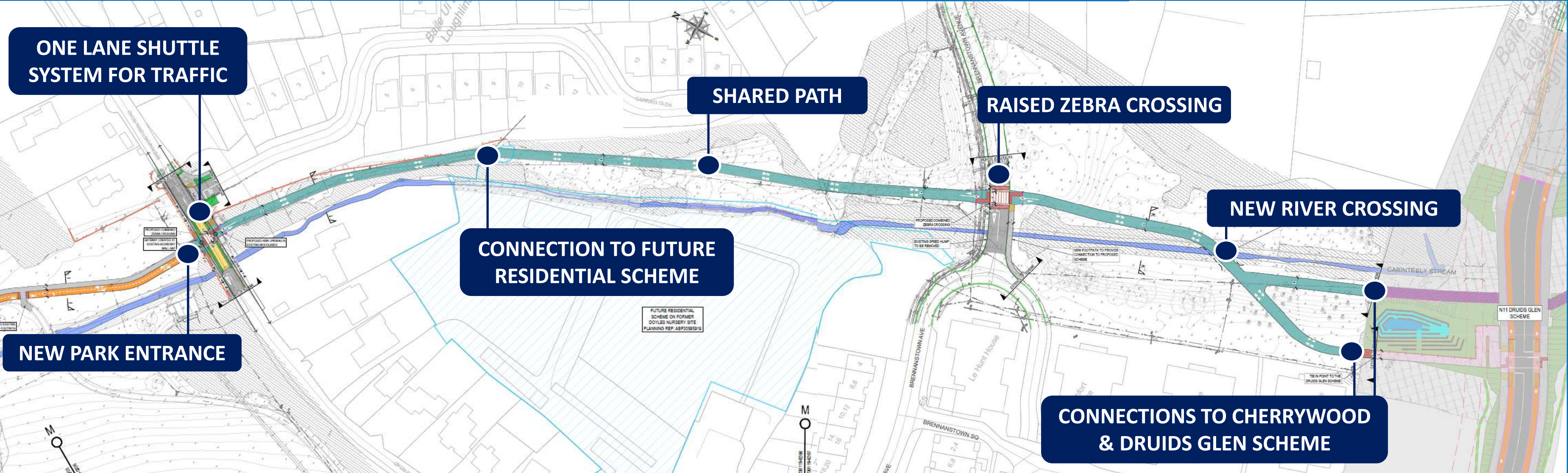
PROXIMITY TO APARTMENTS

GRADIENTS

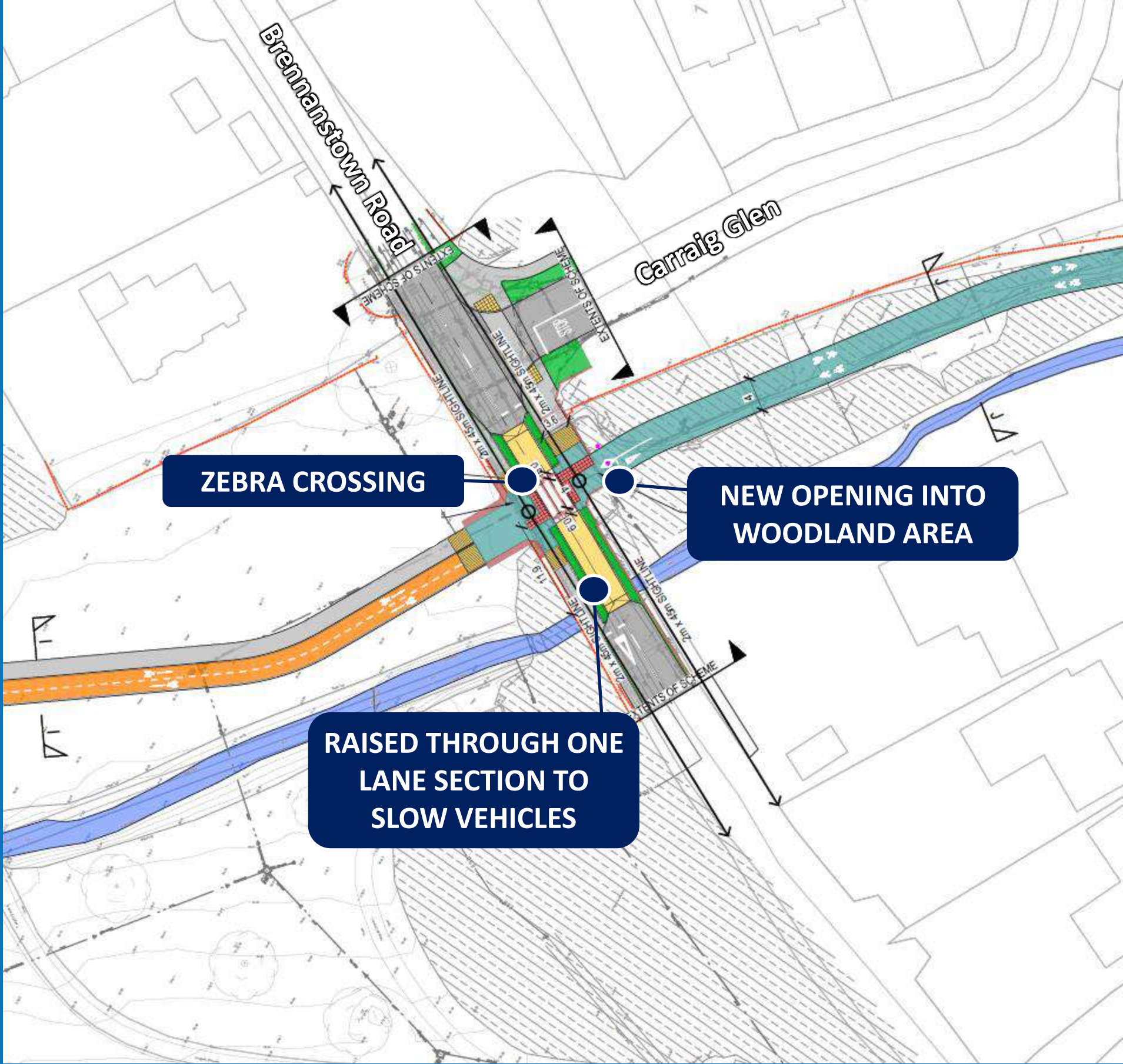
INTEGRATION WITH FUTURE
RESIDENTIAL DEVELOPMENT



Section D: Brennanstown Road / Avenue



Section D: Brennanstown Road / Avenue

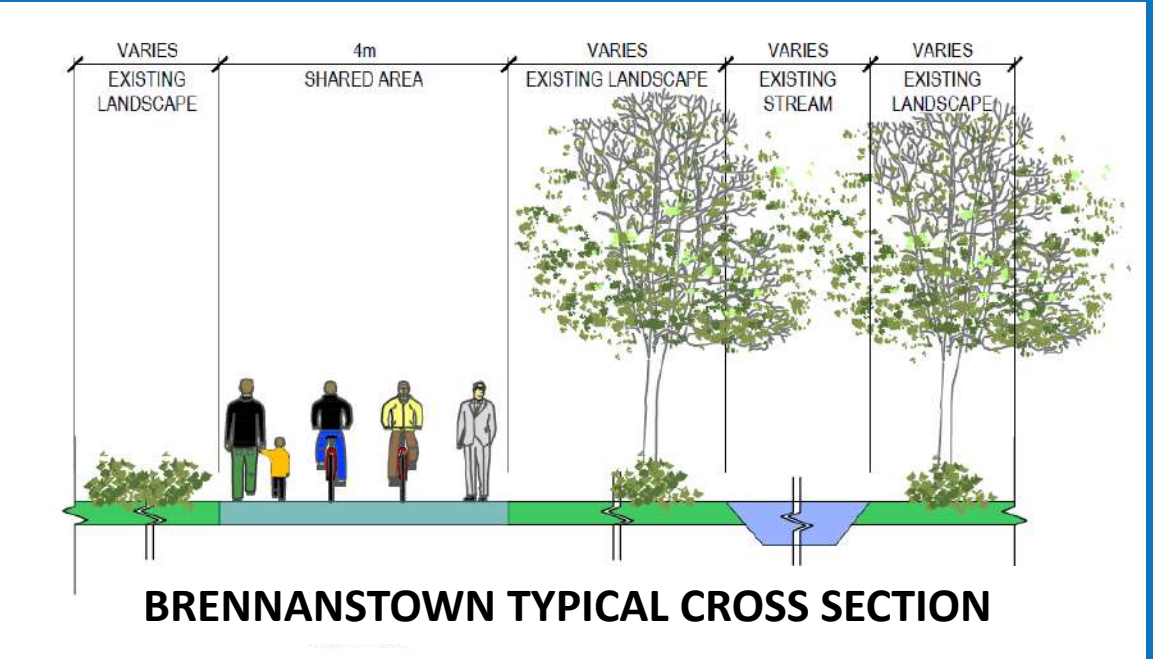
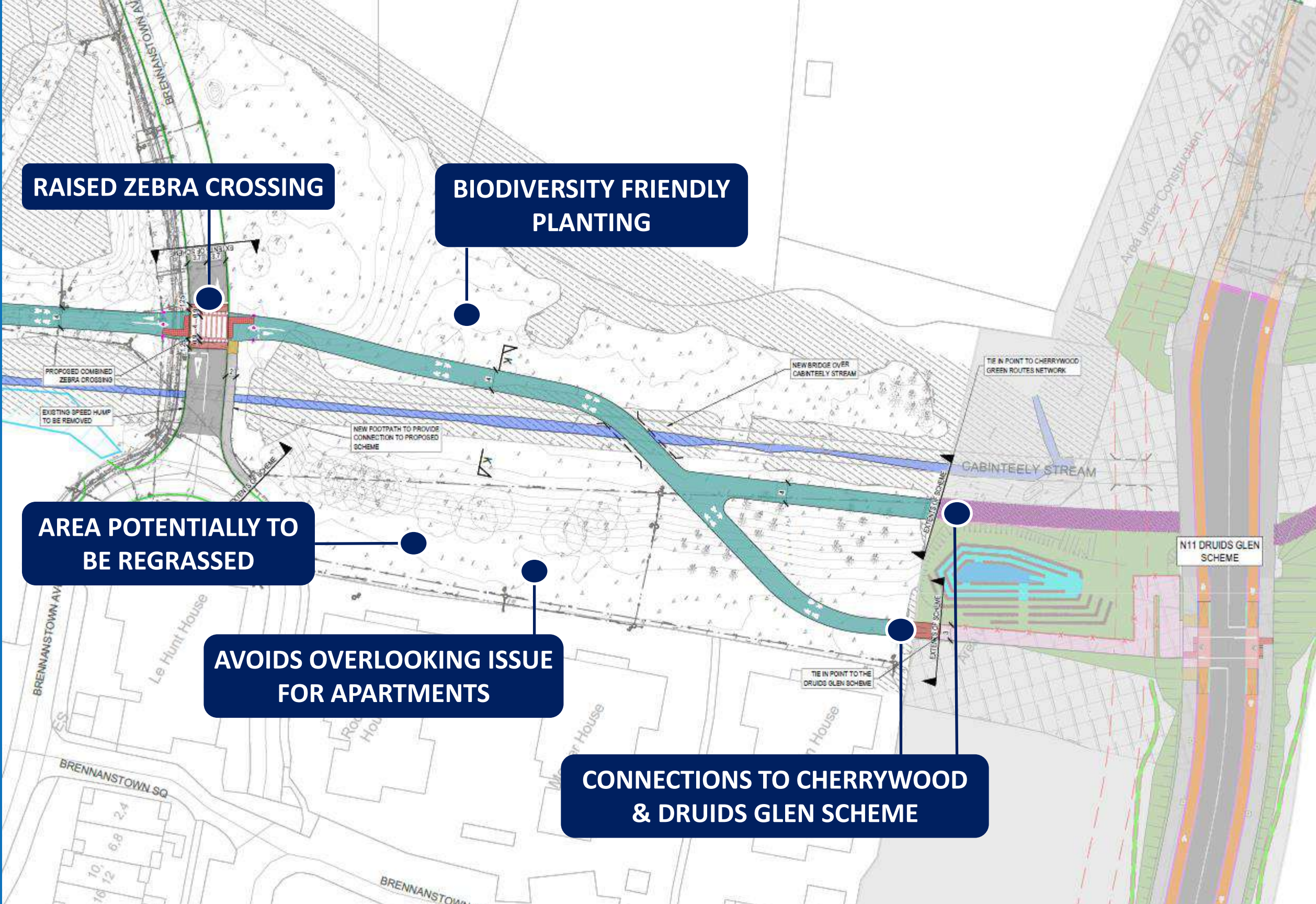


SIMILAR TRAFFIC SHUTTLE ARRANGEMENT



PRIORITY CROSSING FOR PEDESTRIANS & CYCLISTS

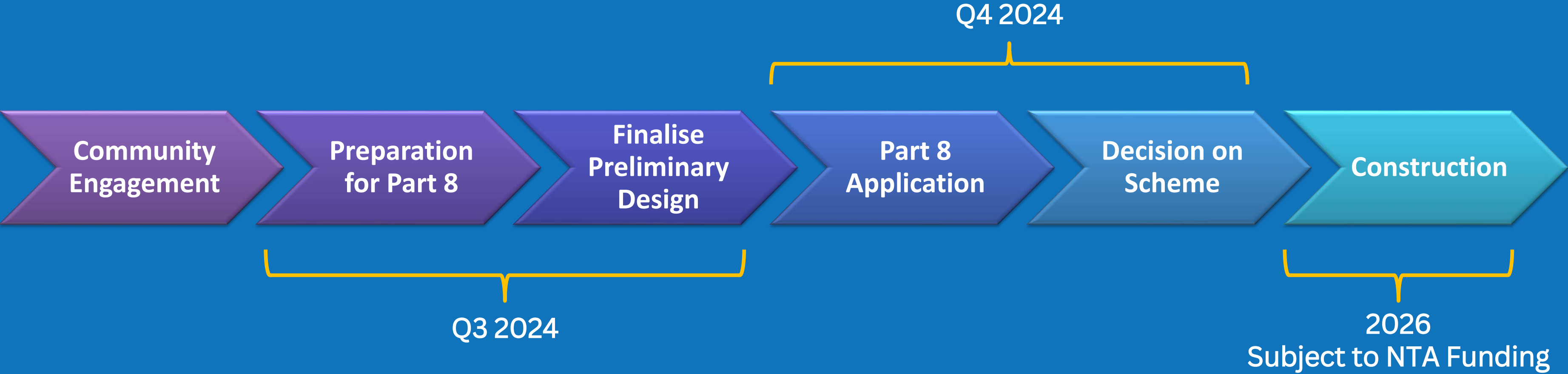
Section D: Brennanstown Road / Avenue



Next Steps



Timeline



Thank You

