



GMC Utilities Group Ltd, GMC House,  
Millenium Business Park, Cappagh Road,  
Ballycoolin, Dublin 11, Ireland.  
Tel: +353 (0)1 864 9800  
Email: info@gmcirl.com

# TRAFFIC MANAGEMENT PLAN

**PROJECT**  
3684274 IW CDS New Connection

**LOCATION**  
Glenamuck Road The Leys Carrickmines Great Dublin



RECOMMENDED PRINT A3 | ISSUED : 13/06/2024 | REVISION - 01 | TMPs - 04 | DESIGNER - K.MUNSTER | DRAWN - K.MUNSTER | APPROVED - D.GOUGH

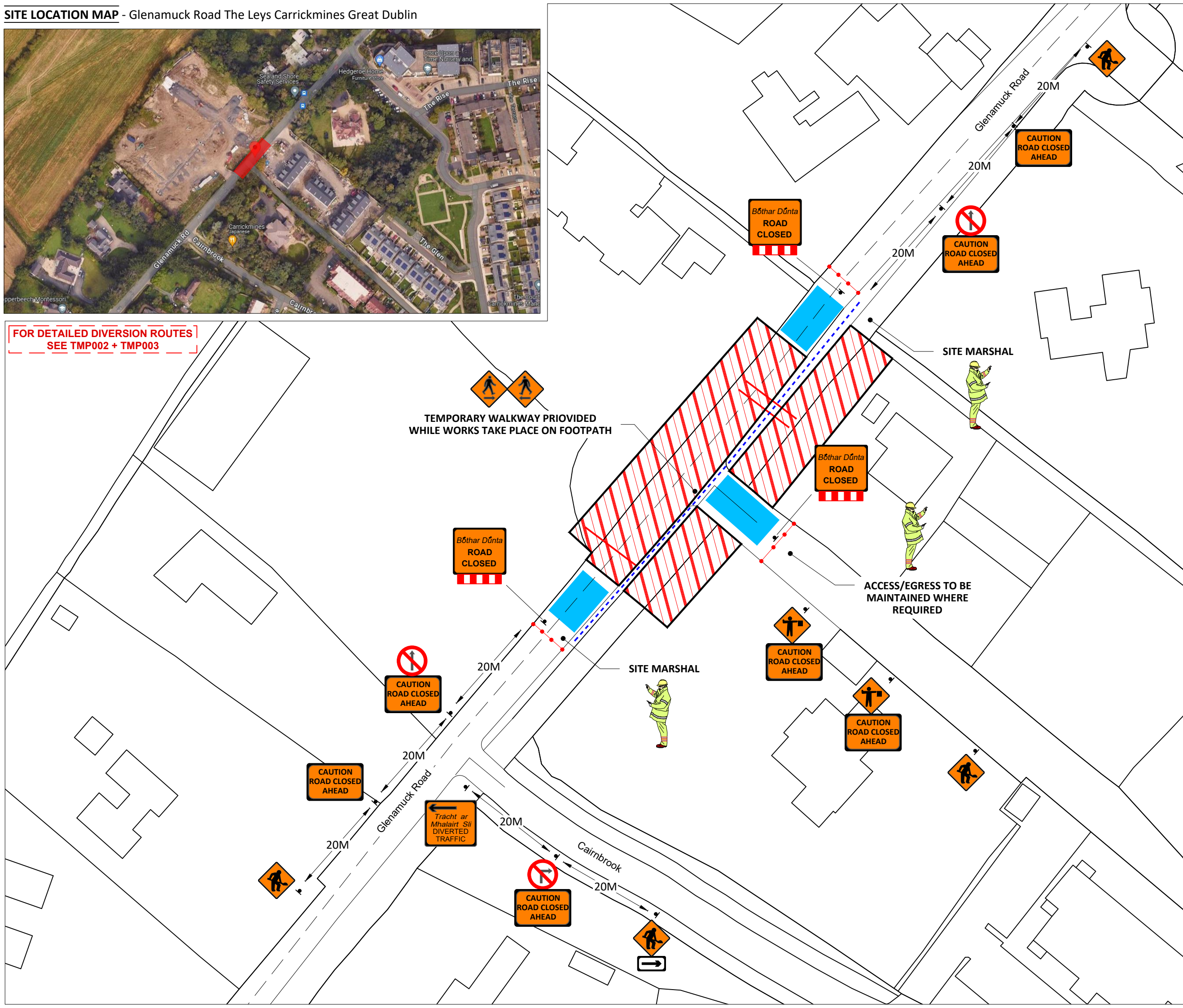
**FOR DETAILED DIVERSION ROUTES  
SEE TMP002 + TMP003**



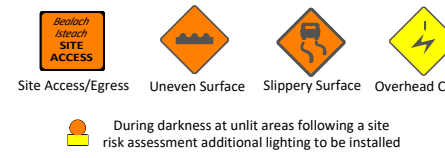
**SITE LOCATION MAP - Glenamuck Road The Leys Carrickmines Great Dublin**



**FOR DETAILED DIVERSION ROUTES  
SEE TMP002 + TMP003**



- SITE SPECIFIC NOTES**
- Traffic Management to comply with Temporary Traffic Management 2019 publications Chapter 8 Traffic Signs Manual, Design Guidance & Operation Guidance.
  - Road Closed.
  - On single carriageway roads of 50 km/h signs to be placed at 20m intervals. Additional signage may be used where deemed necessary. (Type A & B)
  - A Pedestrian walkway of 1.2m minimum to be maintained at all times, kerb ramps to be provided where required
  - Work Area to be barriered at all times.
  - TMP is based on information received at time of design, minor changes may be required on site. Major changes to site works will require revised TMP.
  - Below signage to be used where required.....

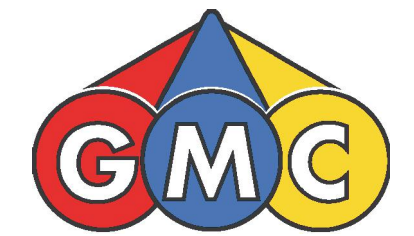


- LEGEND:**
- PEDESTRIAN ROUTE
  - WORK/PLANT AREA
  - SAFETY AREA
  - SITE BARRIER
  - CONES
  - SIGN LOCATION & ORIENTATION
  - BARRIER BOARD

**Design Parameters for Level 1 (iii)  
(Single Carriageway 50 km/h)**

Design Parameters	Roadworks Type A (>12 Hours)
Temporary Signs	
Sign Size (mm)	600 Min
Sign Visibility (m)	50
Number of Signs	2
Cumulative Distance (m)	40
Distance between advance signs (m)	20
Minimum Rate of Taper	
Taper at Lane (m) <sup>2</sup>	1 in 5
Taper at Hard Shoulder (m) <sup>2</sup>	1 in 5
Maximum Cone Spacing	
Cone Height (mm)	750
At Taper (m) <sup>2</sup>	3
Longitudinal (m) <sup>2</sup>	3
Maximum Lamp Spacing	
At Taper (m)	6
Longitudinal (m)	6
Safety Zone	
Longitudinal (m)	5
Lateral (m)	0.5
Lanes	
Minimum Lane Width (m)	3 (2.5)
Two-way Roadway Width (m)	5

Note:  
A. 45 degree taper is required at active temporary traffic controlled layouts with cones at 1m centres.  
B. Cone spacing shown is the maximum permitted. Where geometry or any other site specific reason dictates the spacing shall be reduced accordingly.  
C. The optimum lane width for all classes of vehicles is 3.3m. This may be reduced to a minimum of 3.0m. Below this, HGVs and buses must be marshalled past the works. The absolute minimum lane width, if only cars and light vehicles are present, is 2.5m. Refer to Chapter 8, Paragraphs 8.4.3.1 to 8.4.3.3.



**GMC Utilities Group Ltd**, GMC House, Millenium Business Park, Cappagh Road, Ballycoolin, Dublin 11, Ireland.  
Tel: +353 (0)1 864 9800  
Email: info@gmcirl.com

<b>Project ;</b>	3684274 IW CDS New Connection
<b>Location ;</b>	Glenamuck Road The Leys Carrickmines Great Dublin
<b>TM Method ;</b>	Detailed Site Layout
<b>Designer ;</b> DG	<b>Drawn ;</b> DG <b>Approved ;</b> DG
<b>Date ;</b>	06/06/2024
<b>Scale ;</b>	NTS - USE FIGURED DIMENSIONS ONLY
<b>TMP Guide Reference ;</b>	<b>TMP-001</b>
<b>Dwg Number ;</b>	<b>GMC-TMP-18371-REV00</b>



**DIVERSION ROUTE A**

VARIABLE MESSAGE SIGN

VMS TO BE ERECTED WHERE REQUIRED FOLLOWING DISCUSSIONS

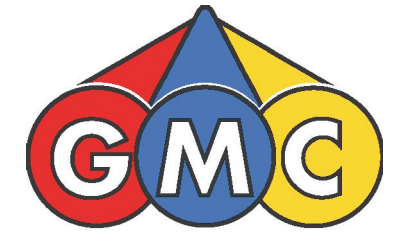
11 min  
6.1 km

SITE LOCATION  
see tmp-001

CLOSURE POINT A  
see tmp004

GLENAMUCK ROAD  
ROAD CLOSED  
local access only

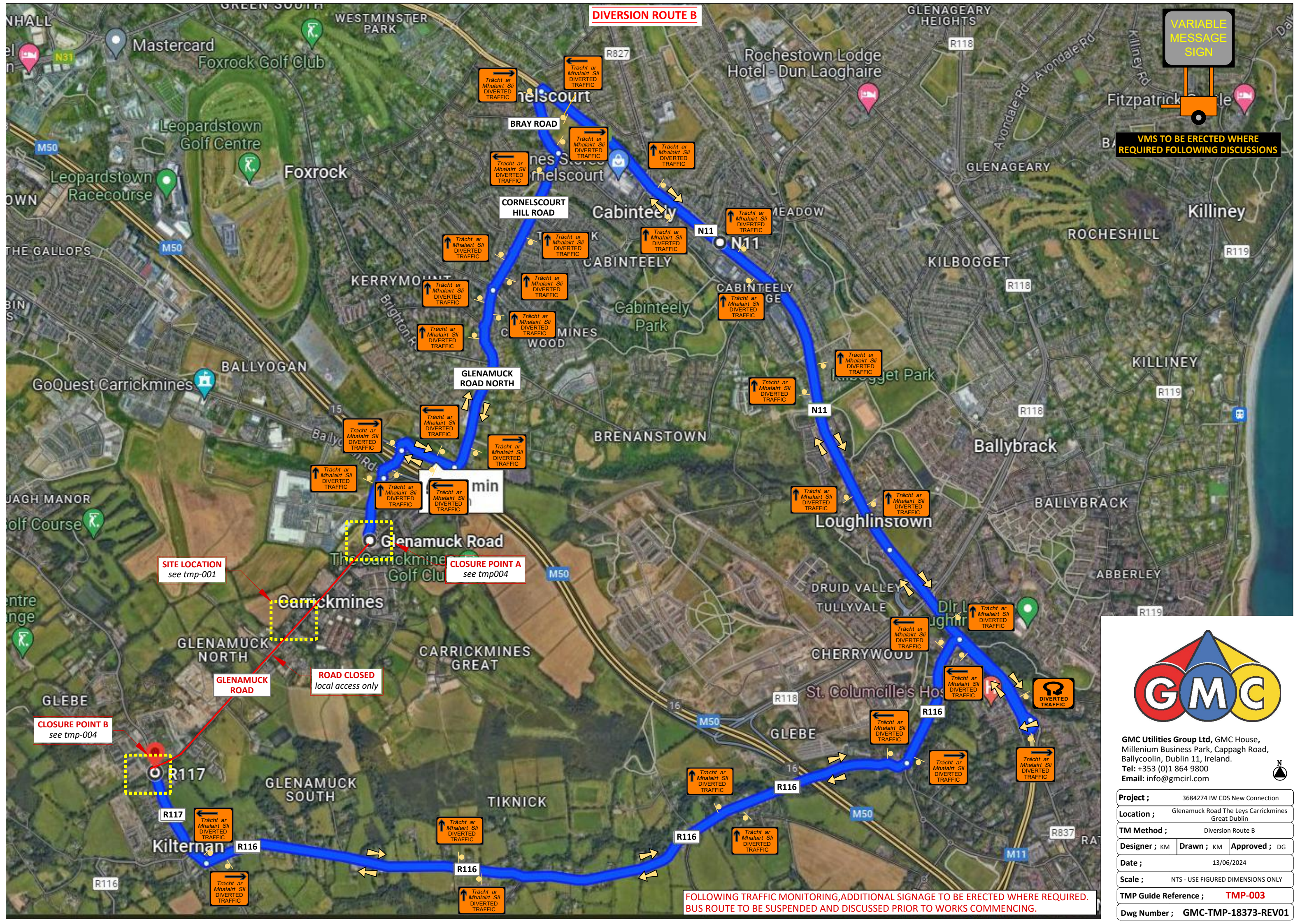
CLOSURE POINT B  
see tmp-004



GMC Utilities Group Ltd, GMC House, Millenium Business Park, Cappagh Road, Ballycoolin, Dublin 11, Ireland.  
Tel: +353 (0)1 864 9800  
Email: info@gmcirl.com

Project ;	3684274 IW CDS New Connection
Location ;	Glenamuck Road The Leys Carrickmines Great Dublin
TM Method ;	Diversion Route A
Designer ;	DG
Drawn ;	DG
Approved ;	DG
Date ;	06/06/2024
Scale ;	NTS - USE FIGURED DIMENSIONS ONLY
TMP Guide Reference ;	<b>TMP-002</b>
Dwg Number ;	<b>GMC-TMP-18372-REV00</b>

FOLLOWING TRAFFIC MONITORING, ADDITIONAL SIGNAGE TO BE ERECTED WHERE REQUIRED.  
BUS ROUTE TO BE SUSPENDED AND DISCUSSED PRIOR TO WORKS COMMENCING.



**DIVERSION ROUTE B**



VMS TO BE ERECTED WHERE REQUIRED FOLLOWING DISCUSSIONS

SITE LOCATION see tmp-001

CLOSURE POINT A see tmp004

CLOSURE POINT B see tmp-004

GLENAMUCK ROAD

ROAD CLOSED local access only

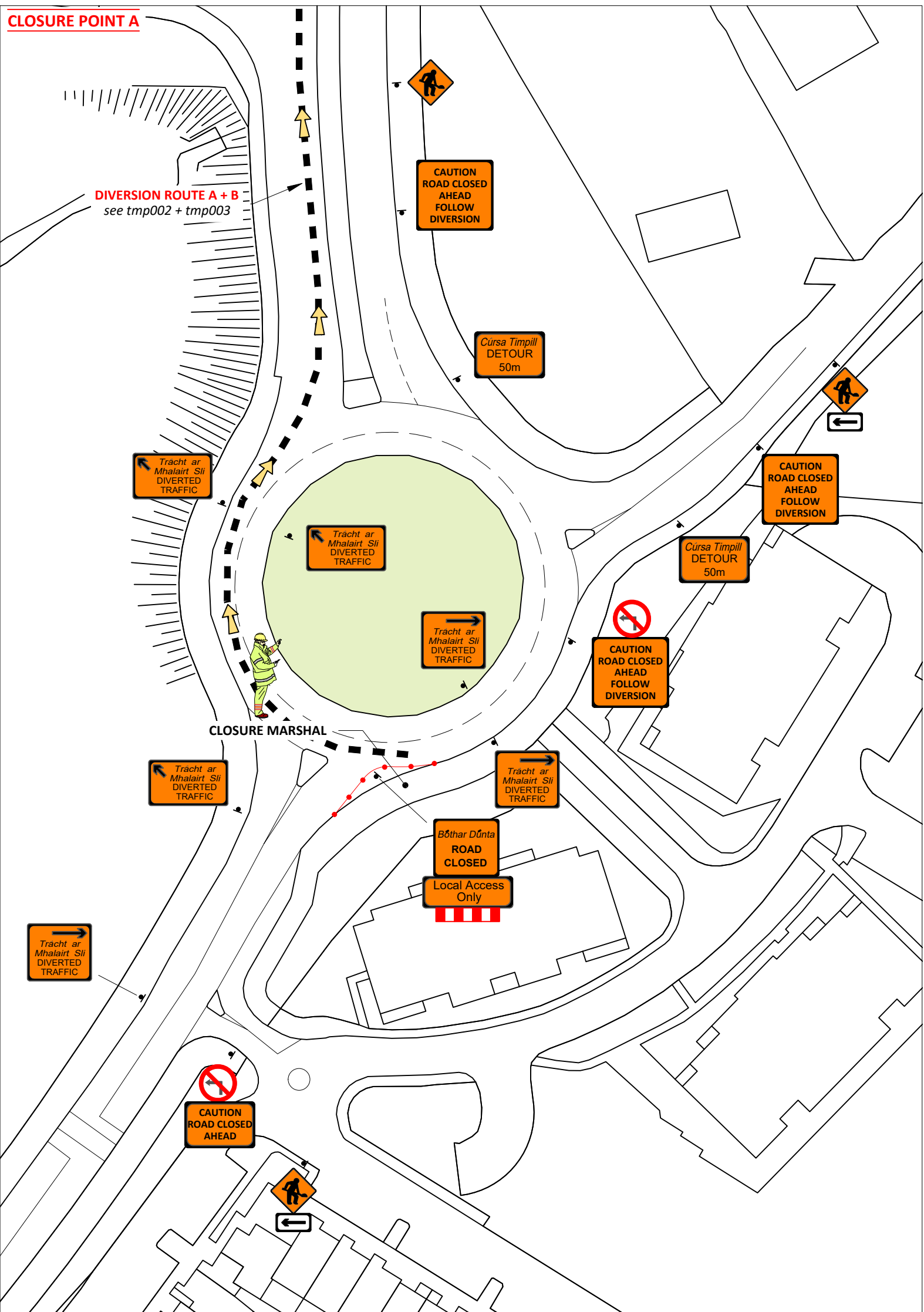
FOLLOWING TRAFFIC MONITORING, ADDITIONAL SIGNAGE TO BE ERECTED WHERE REQUIRED. BUS ROUTE TO BE SUSPENDED AND DISCUSSED PRIOR TO WORKS COMMENCING.



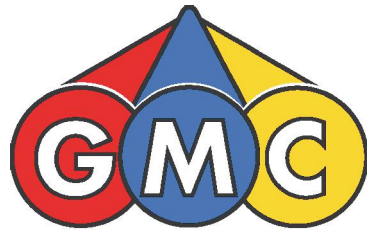
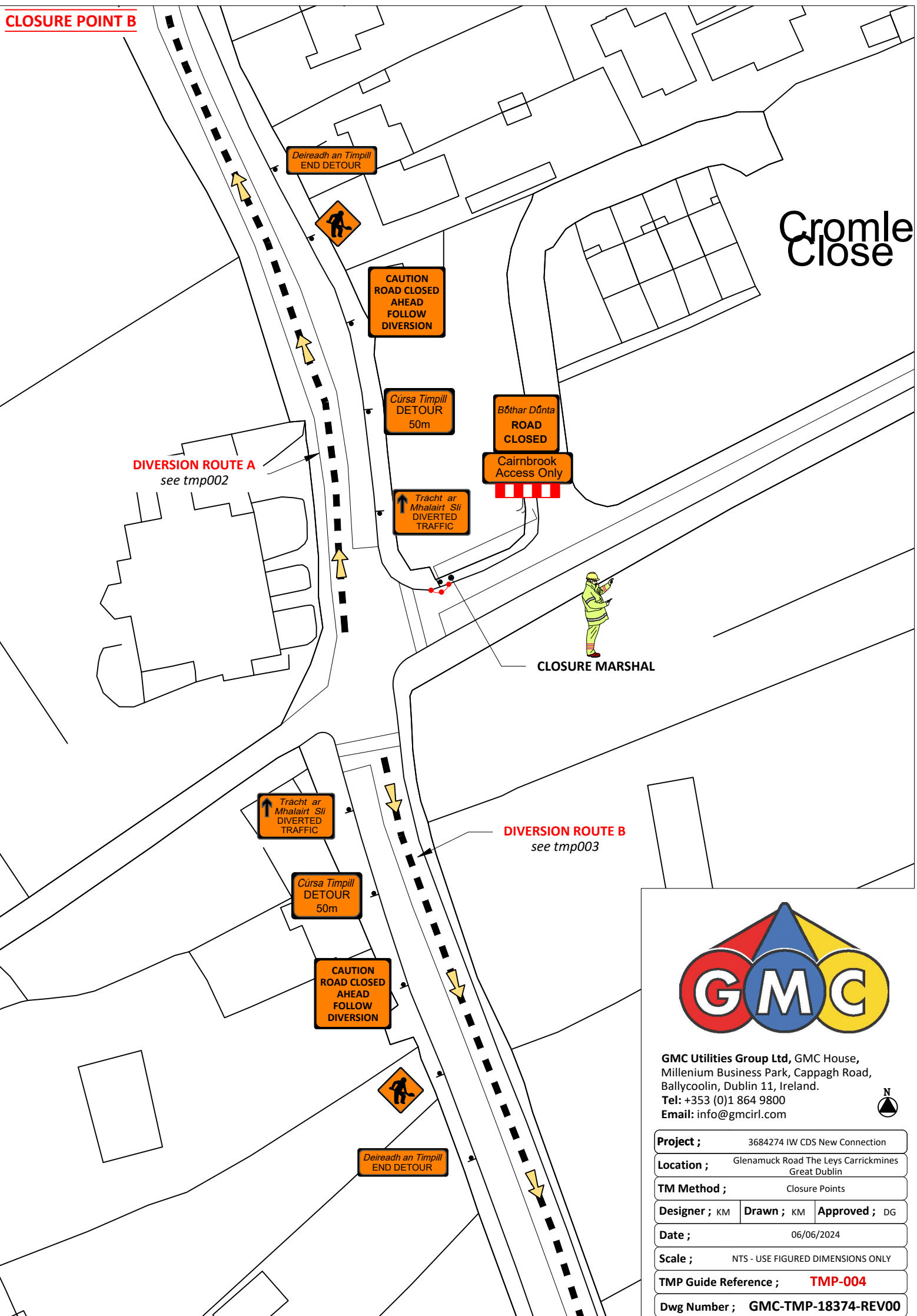
GMC Utilities Group Ltd, GMC House, Millenium Business Park, Cappagh Road, Ballycoolin, Dublin 11, Ireland.  
Tel: +353 (0)1 864 9800  
Email: info@gmcirl.com

Project ;	3684274 IW CDS New Connection	
Location ;	Glenamuck Road The Leys Carrickmines Great Dublin	
TM Method ;	Diversion Route B	
Designer ; KM	Drawn ; KM	Approved ; DG
Date ;	13/06/2024	
Scale ;	NTS - USE FIGURED DIMENSIONS ONLY	
TMP Guide Reference ;	<b>TMP-003</b>	
Dwg Number ;	<b>GMC-TMP-18373-REV01</b>	

**CLOSURE POINT A**



**CLOSURE POINT B**



**GMC Utilities Group Ltd**, GMC House,  
Millenium Business Park, Cappagh Road,  
Ballycoolin, Dublin 11, Ireland.  
Tel: +353 (0)1 864 9800  
Email: info@gmcirl.com

Project ;	3684274 IW CDS New Connection		
Location ;	Glenamuck Road The Leys Carrickmines Great Dublin		
TM Method ;	Closure Points		
Designer ; KM	Drawn ; KM	Approved ; DG	
Date ;	06/06/2024		
Scale ;	NTS - USE FIGURED DIMENSIONS ONLY		
TMP Guide Reference ;	<b>TMP-004</b>		
Dwg Number ;	<b>GMC-TMP-18374-REV00</b>		

