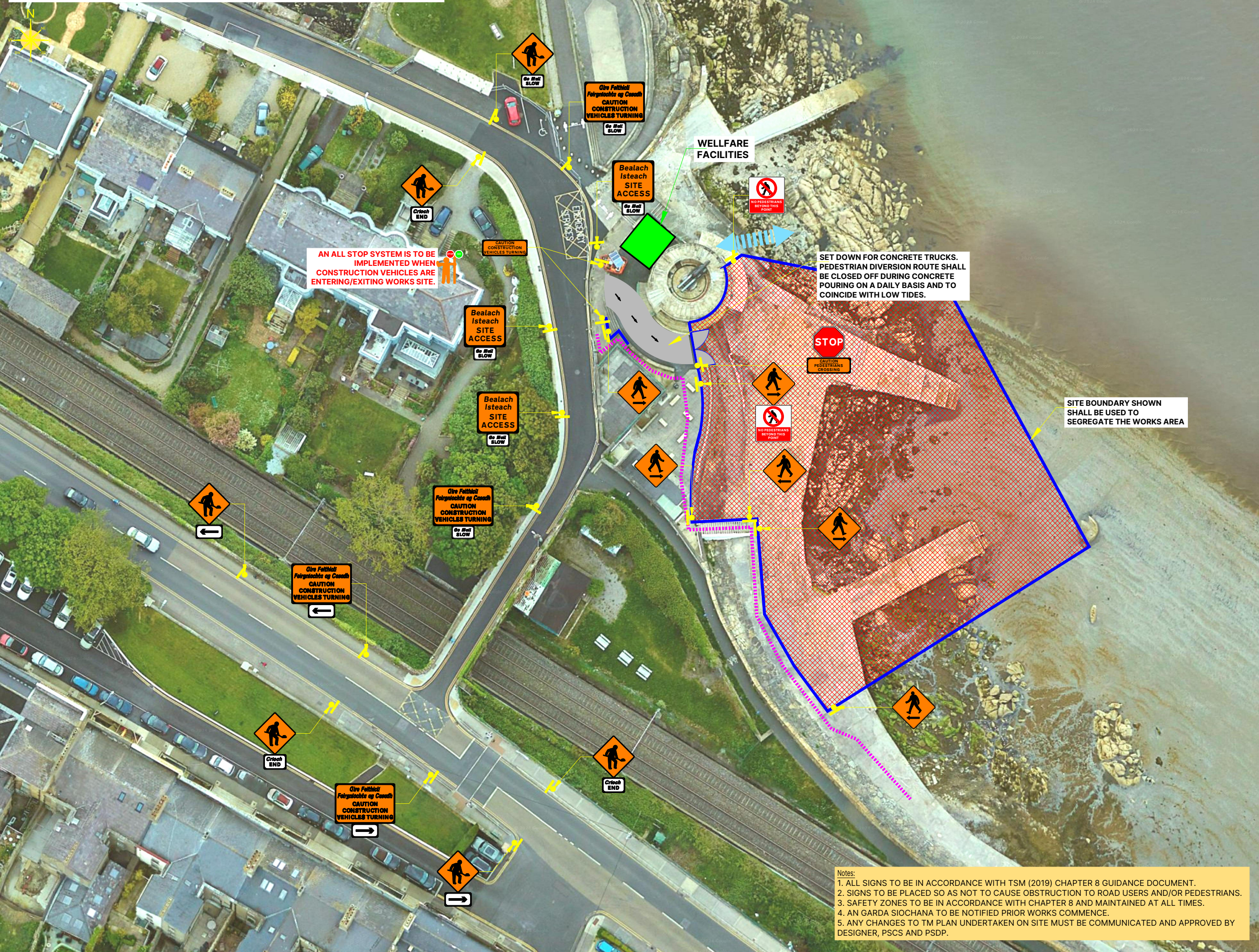


PN 2619-22-01, SEAPOINT, DUBLIN - SITE ACCESS LAYOUT



DESIGN PARAMETERS

Road Level	- 1(iv)
Roadworks Type	- A
Speed Limit	- 60km/h
Sign Visibility	- 60m
Number of Signs	- 3
Cumulative Distance	- 60m
Distance between: advance signs (m)	- 20m
Taper at Lane	- 1 in 10
Taper at HS	- 1 in 10
Max. Cone Spacing: At Tapers	- 3m
Longitudinal	- 6m
Cone Height	- 750
Max. Lamp Spacing: At Tapers	- 6m
Longitudinal	- 12m
Safety Zones: Longitudinal	- 15m
Lateral	- 0.5m
Min. Lane Width	- 3 (2.5)m

LEGEND:

	- WORKS AREA
	- SAFETY ZONE
	- TRAFFIC CONE
	- SITE HOARDING
	- TRAFFIC FLOW/SHUTTLE
	- SIGN SYMBOL
	- PEDESTRIAN ROUTE

W 111 WK 062

WK 052

SIGN LOCATION PLACEMENT IS TO BE DECIDED BY THE ONSITE SUPERVISOR, AS TO DETERMINE THE LOCATION FOR THE BEST VISIBILITY AND HIGHEST AWARENESS

MTC
ENGINEERING DESIGN LTD

Road Traffic Management
Design and Planning

m: 085 141 4424
e: mtcdesign@live.ie
a: Roscrea, Co. Tipperary

Client: MJS CIVIL ENGINEERING

MJS CIVIL ENGINEERING

Project Title:
SEAPOINT, DUBLIN

Drawing Title:
TRAFFIC MANAGEMENT PLAN AT SEAPOINT, DUBLIN

Design:	Checked:
TS	TS
Drawn:	Approved:
TP	TS
Drawing no.:	Project no.:
01	PN 2619-25
Scale:	Revision:
A3 @ NTS	0
Date:	
24/10/2024	

Notes:

1. ALL SIGNS TO BE IN ACCORDANCE WITH TSM (2019) CHAPTER 8 GUIDANCE DOCUMENT.
2. SIGNS TO BE PLACED SO AS NOT TO CAUSE OBSTRUCTION TO ROAD USERS AND/OR PEDESTRIANS.
3. SAFETY ZONES TO BE IN ACCORDANCE WITH CHAPTER 8 AND MAINTAINED AT ALL TIMES.
4. AN GARDA SIOCHANA TO BE NOTIFIED PRIOR WORKS COMMENCE.
5. ANY CHANGES TO TM PLAN UNDERTAKEN ON SITE MUST BE COMMUNICATED AND APPROVED BY DESIGNER, PSCS AND PSDP.