



Kiltiernan-Glenamuck Draft Local Area Plan **2025**

New Homes



**Village
Centre site**



**Road under
construction**



Evolving area

- What is a Local Area Plan?
- Draft Plan Boundary and Context
- Pre-Draft Consultation
- Vision and high-level Plan Objectives
- Draft Local Area Plan Table of Contents
- Urban Design Framework and Site Development Frameworks
- Density
- Movement and Transport – Area Based Transport Assessment (ABTA) / Draft Local Transport Plan (LTP)
- Biodiversity, Open Space and Recreation
- Timelines and how to make a submission

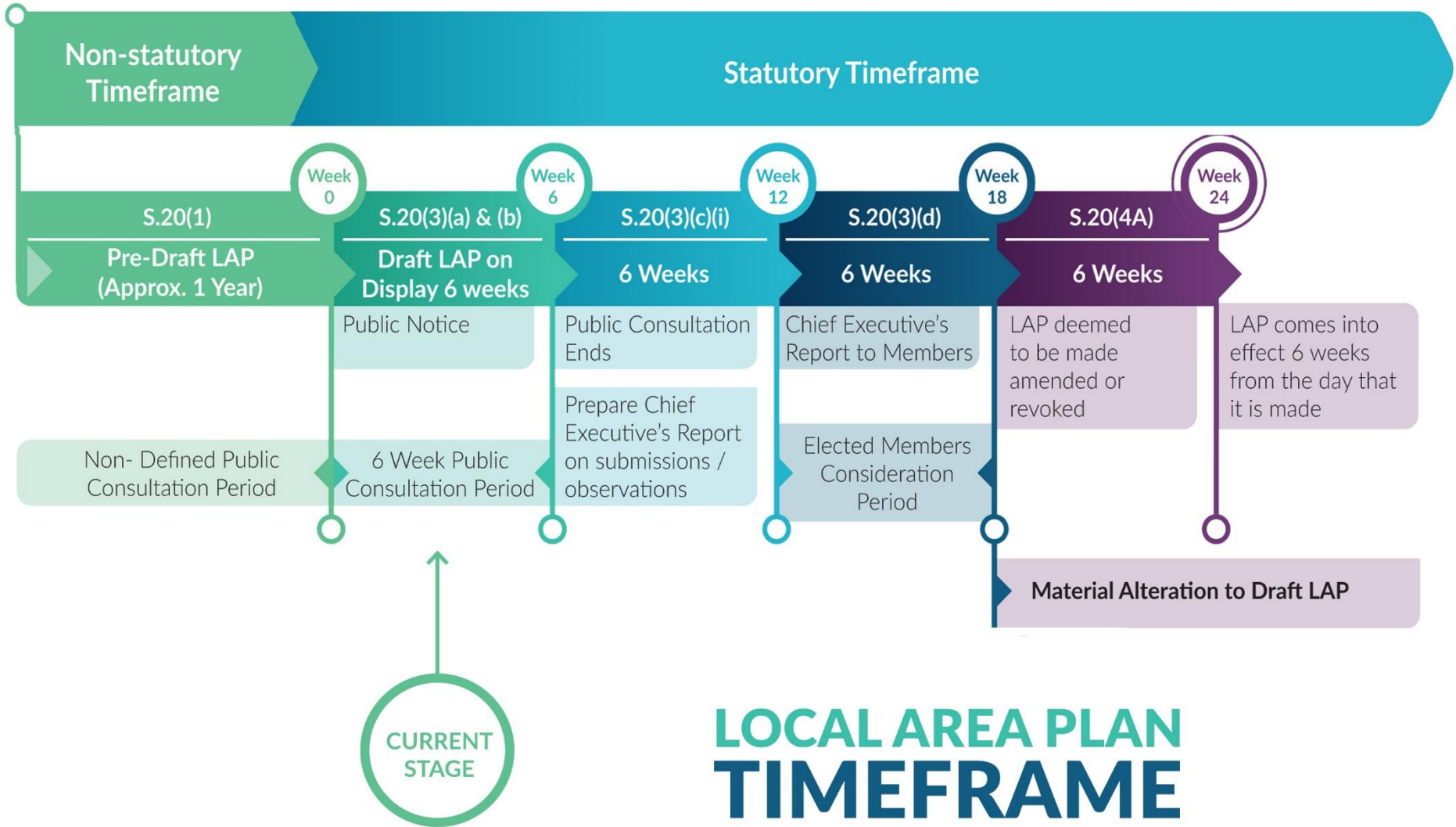
- A **Local Area Plan** may be prepared for “**those areas which require economic, physical and social renewal and for areas likely to be subject to large scale development within the lifetime of the plan**”

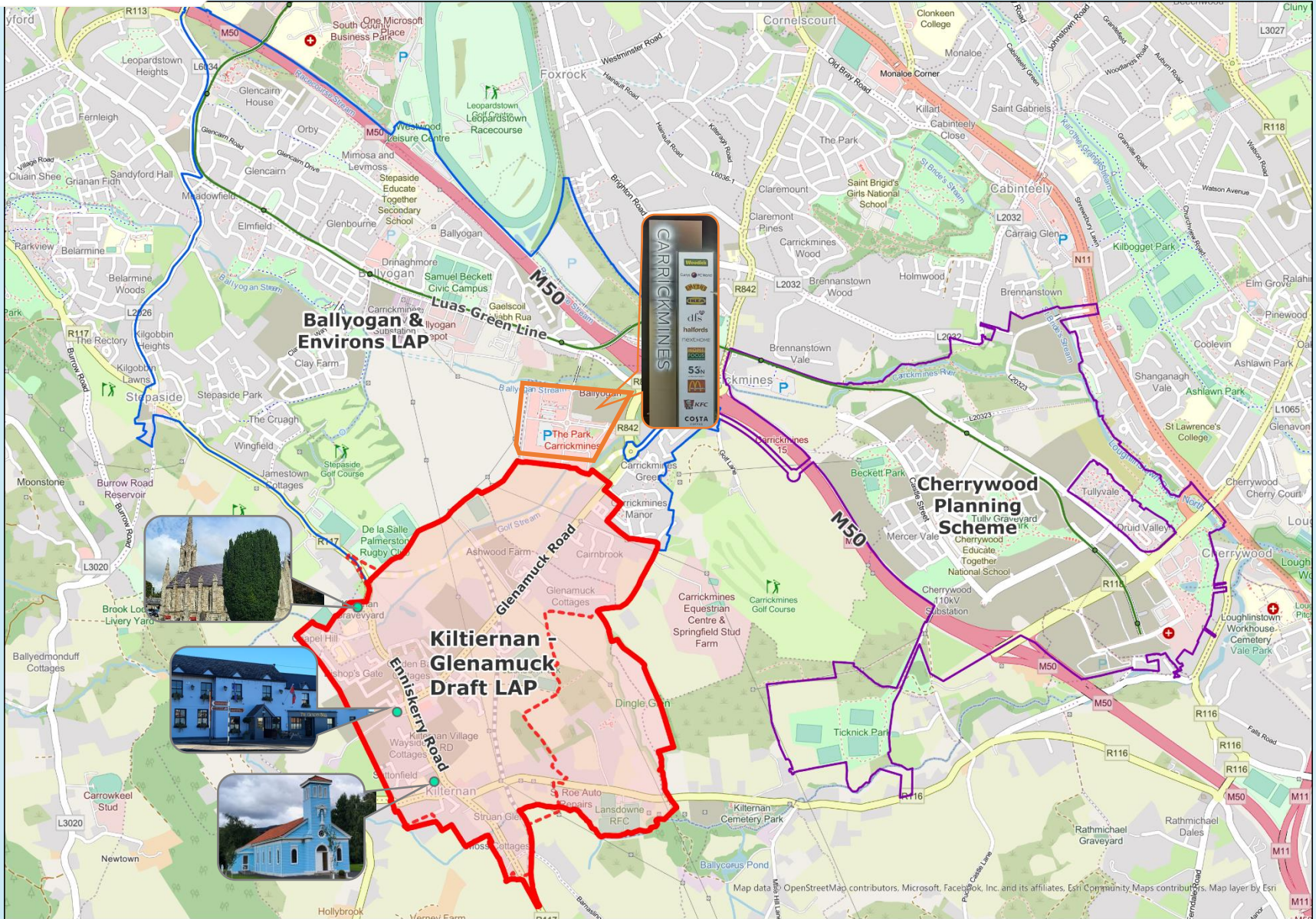
(Planning and Development Act)

- “Local Area Plans are intended to provide more detailed planning policies for areas that are expected to experience **significant development and change**”.

(Section 28 “Local Area Plans – Guidelines for Planning Authorities”
DECLG, 2013)

Local Area Plan Timeframe and Process

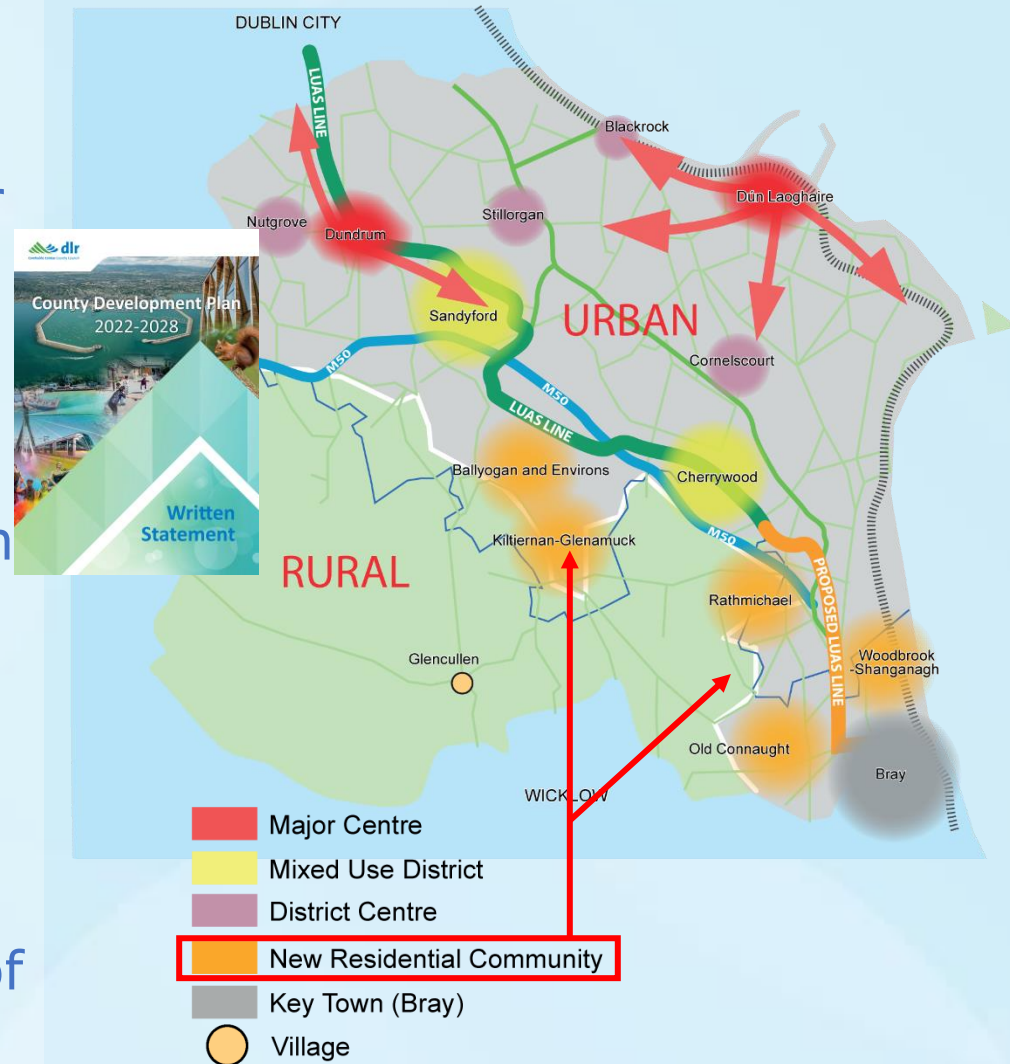




Developed lands & lands with planning permission



- The Dún Laoghaire-Rathdown **County Development Plan** sets out the policies and objectives for the development of the County over the Plan period.
- It is voted on and adopted by the Elected Members.
- The County Development Plan 2022-2028 identifies c.2,000 new residential units could be accommodated in Kiltiernan Glenamuck area.
- Future population of Kiltiernan-Glenamuck could be c.6,000 upon completion of all housing units.



Pre-Draft Consultation 2023/2024

40% want a neighbourhood / village centre with shops, cafes, healthcare, childcare & other facilities

44% requested more schools

24% want better public transport

44% highlighted a need for parks, green spaces, trees & hedgerows



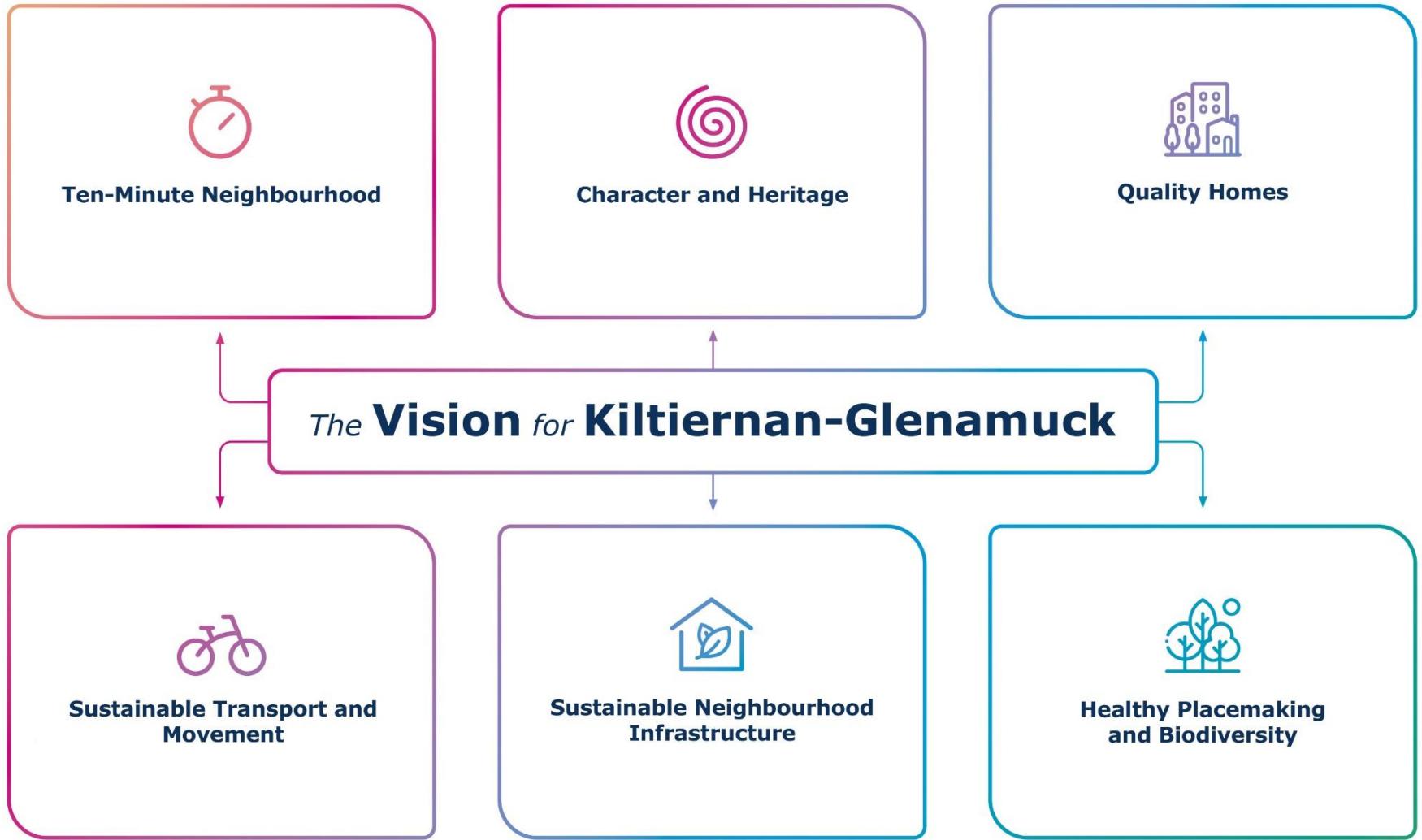
44% want safer cycling routes & secure bicycle parking

43% request playgrounds & recreational facilities

56% want safer roads, footpaths & walking routes

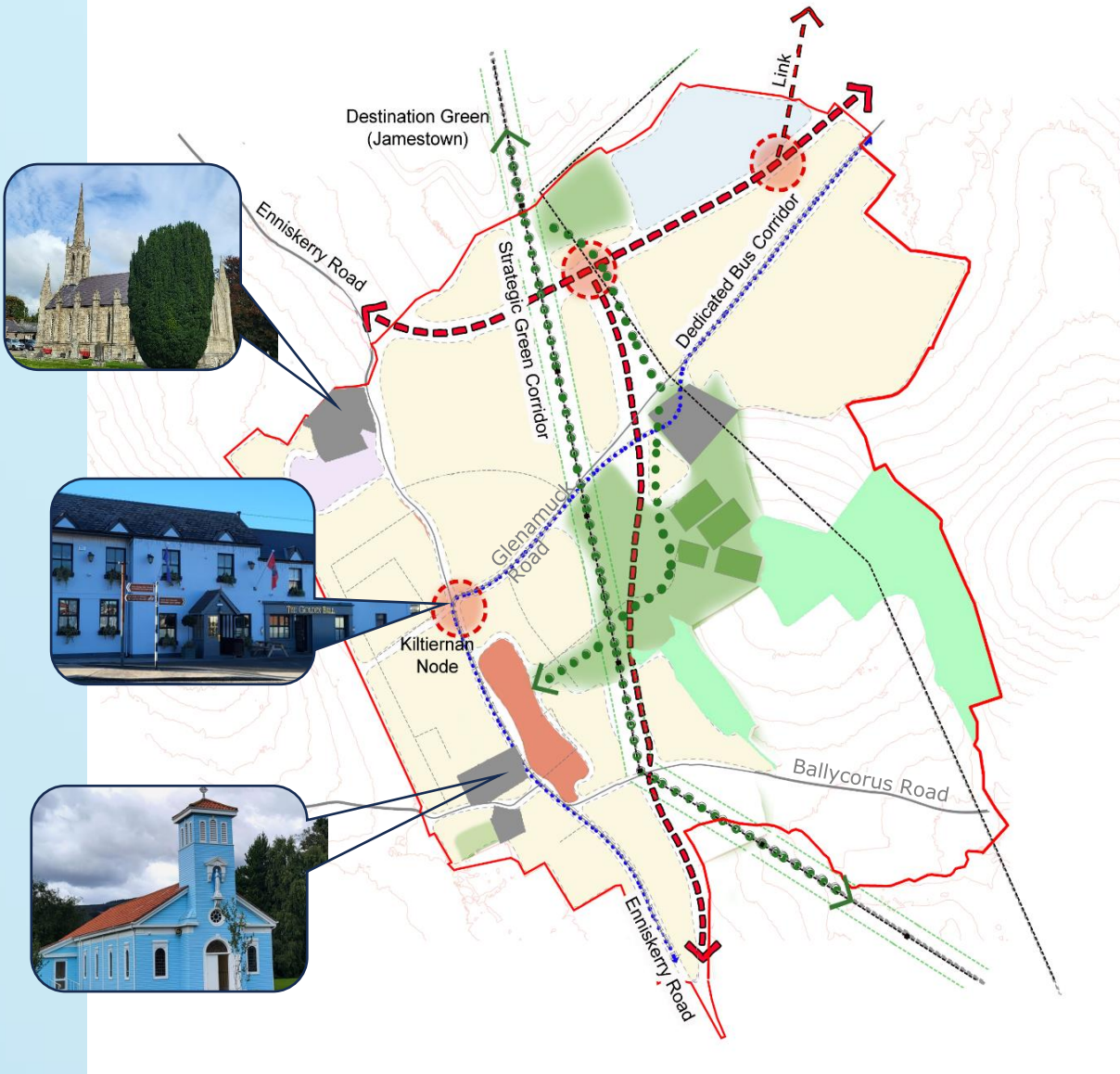
33% want Glenamuck Road improved

Vision



The vision for Kiltiernan-Glenamuck is of a connected and sustainable neighbourhood which enhances the existing green infrastructure, rural character, heritage and biodiversity and includes a vibrant and inclusive village centre.

- 1. Introduction**
- 2. Urban Design Framework and Site Development Frameworks**
- 3. Climate Action and Infrastructure**
- 4. People and Homes**
- 5. Transport and Movement**
- 6. Multifunctional Neighbourhood Centre and Employment**
- 7. Biodiversity, Open Space and Recreation**
- 8. Heritage and Conservation**
- 9. Implementation and Monitoring**



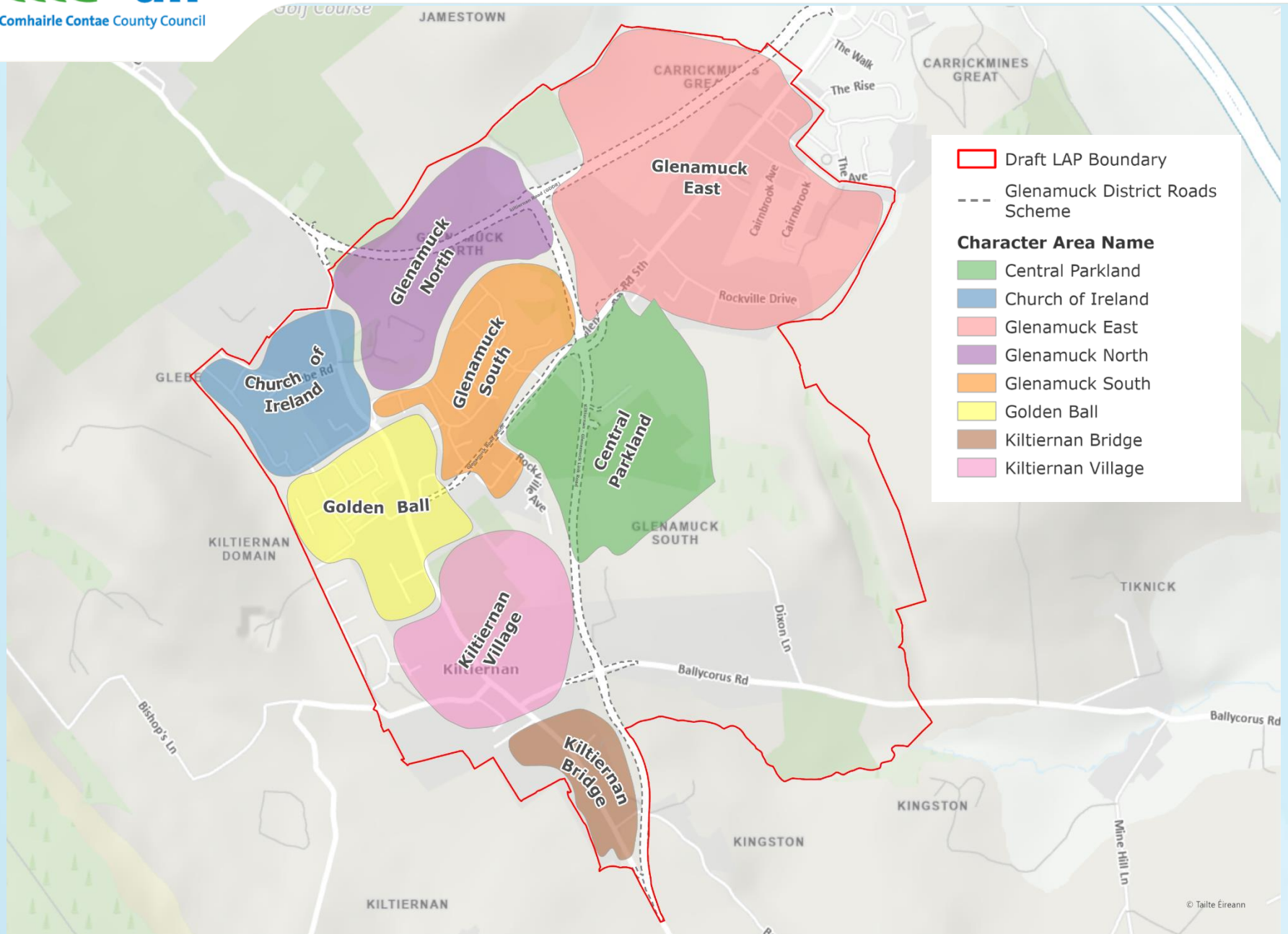
3 urban design strategies:

- An Urban Design Strategy for the Kiltiernan Road and Kiltiernan – Glenamuck Link Road.
- An Urban Design Strategy for Kiltiernan village.
- An urban Design Strategy for Glenamuck.

Concepts:

- North south “Strategic Green Corridor.”
- Utilising the 220KV powerline as an open space spine.
- Northern destination active green space.
- Central green area.
- East west link from new village green.
- High amenity and agricultural land use zoning objectives.

Chapter 2 - Character Areas



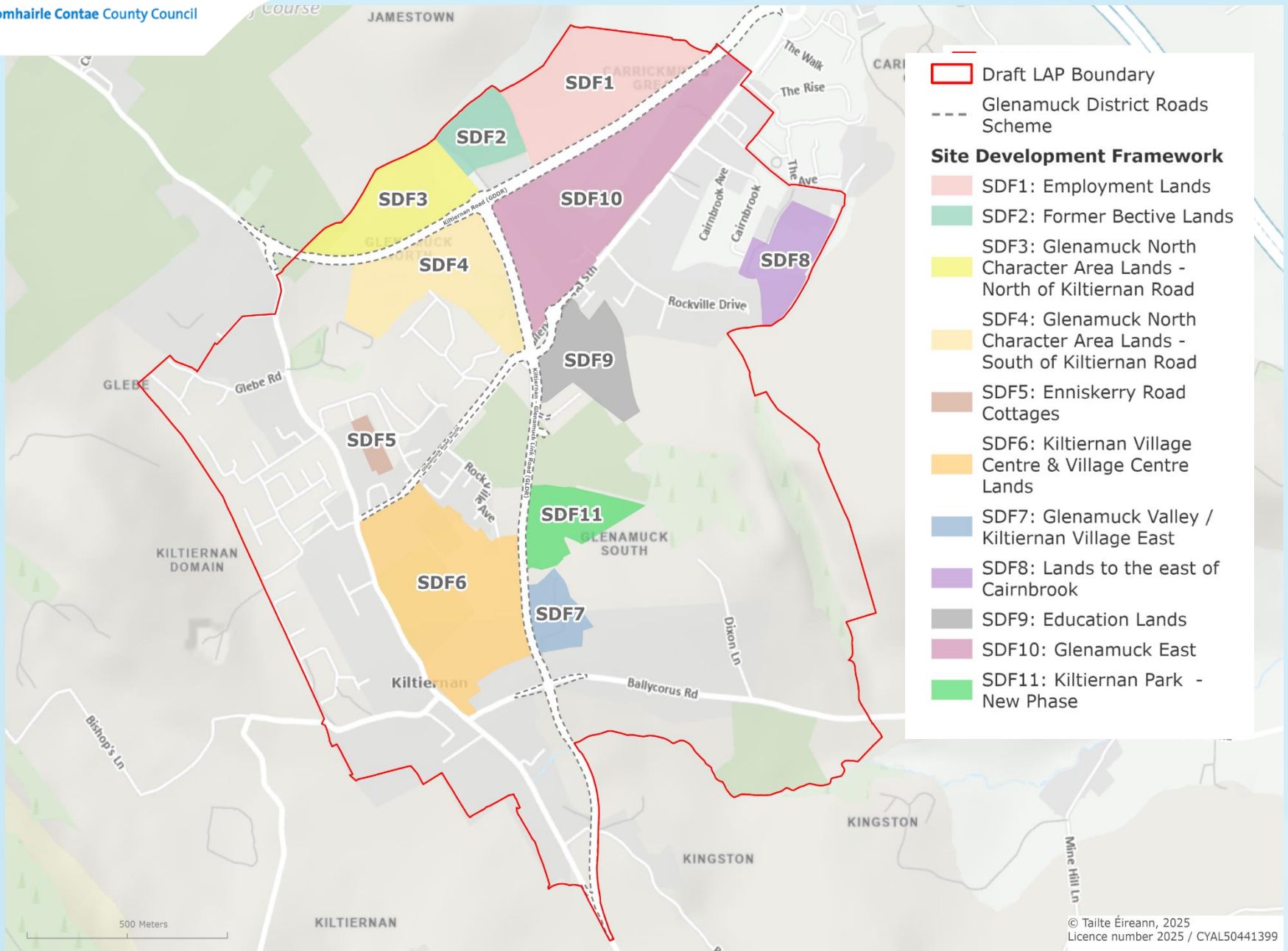
Legend

- Draft LAP Boundary
- Glenamuck District Roads Scheme

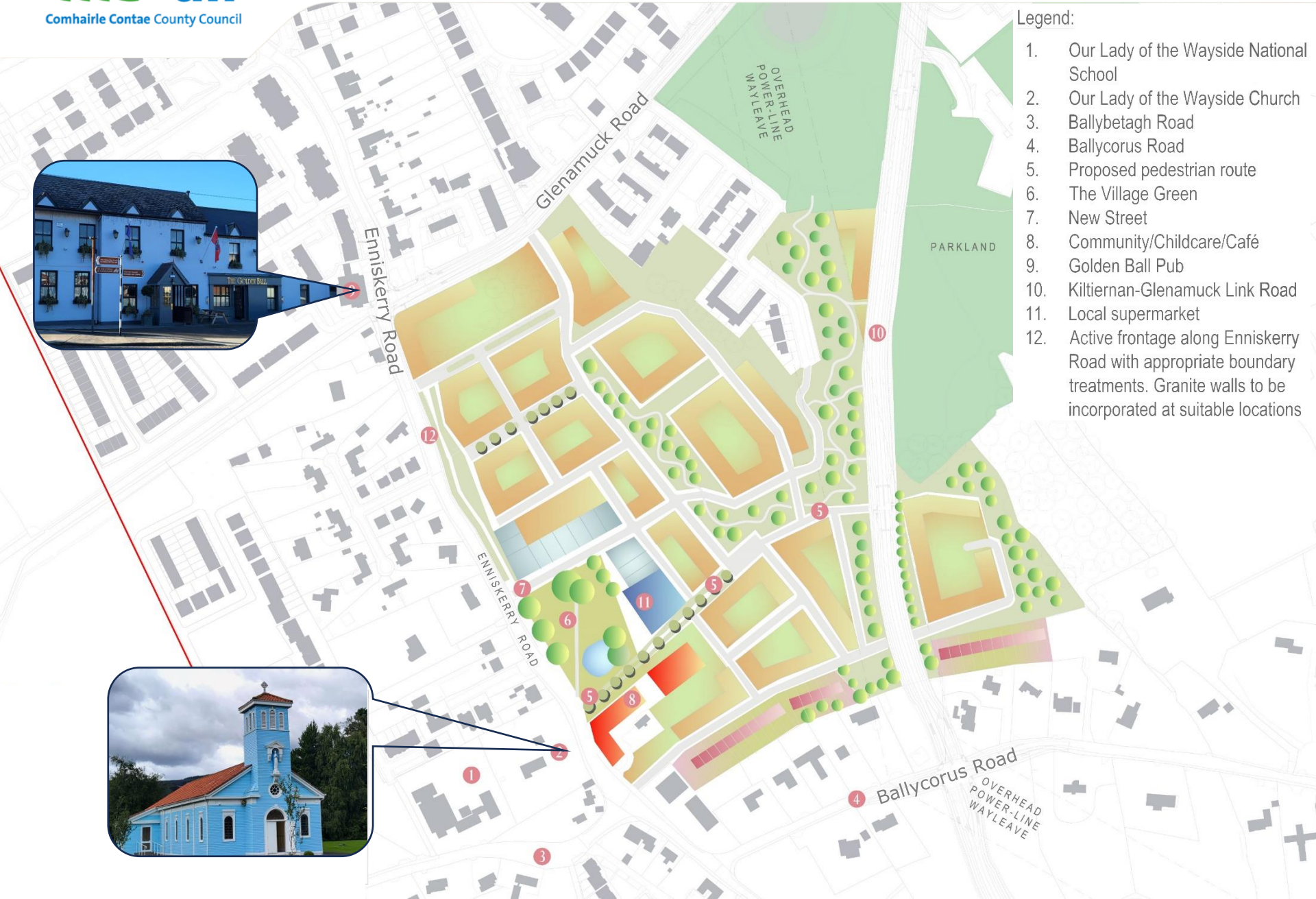
Character Area Name

- Central Parkland
- Church of Ireland
- Glenamuck East
- Glenamuck North
- Glenamuck South
- Golden Ball
- Kiltiernan Bridge
- Kiltiernan Village

Chapter 2 - Site Development Frameworks



Chapter 2 - Village Centre Development Framework



Legend:

1. Our Lady of the Wayside National School
2. Our Lady of the Wayside Church
3. Ballybetagh Road
4. Ballycorus Road
5. Proposed pedestrian route
6. The Village Green
7. New Street
8. Community/Childcare/Café
9. Golden Ball Pub
10. Kiltiernan-Glenamuck Link Road
11. Local supermarket
12. Active frontage along Enniskerry Road with appropriate boundary treatments. Granite walls to be incorporated at suitable locations

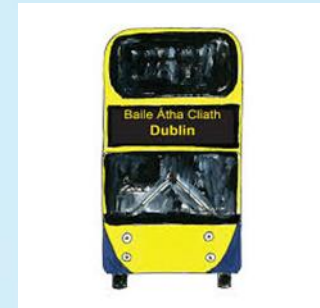
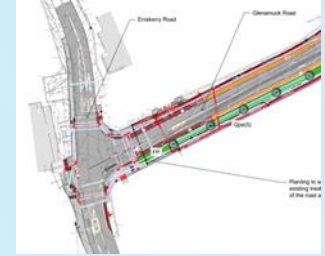
Chapter 4 - Density



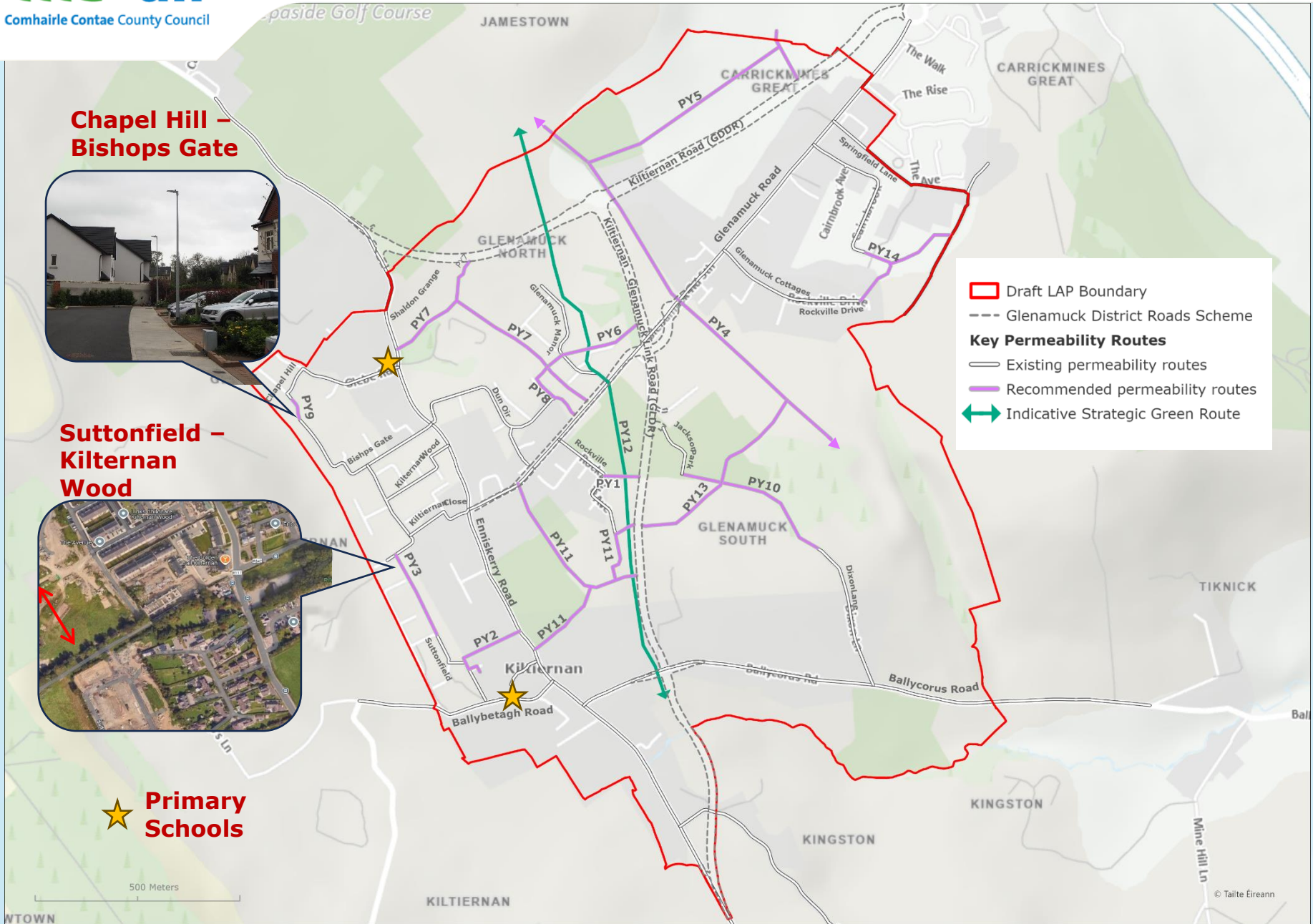
- Area Based Transport Assessment (ABTA) resulting in draft Local Transport Plan (LTP).
- Process involved the Council, National Transport Authority (NTA) and Transport Infrastructure Ireland (TII).
- 2 bus gates already permitted as part of Glenamuck District Roads Scheme (GDRS).
- Shuttle system recommended for Enniskerry Road - shuttle system / cycle bypass that would ensure that motorists slow down and give cyclists priority to move through (Mount Anville example shown here).
- Permeability Links.








- 30km/h Speed Limit and Traffic Management.
- Improved and Increased Active Travel and Permeability Links.
- Delivery of Bus Connects +
- Junction Upgrades- Golden Ball, Enniskerry / Ballybetagh, Enniskerry / Ballycorus.
- Transition Zones/Safe Routes to Schools.
- Establishing a 'Heart' for Kiltiernan Village.

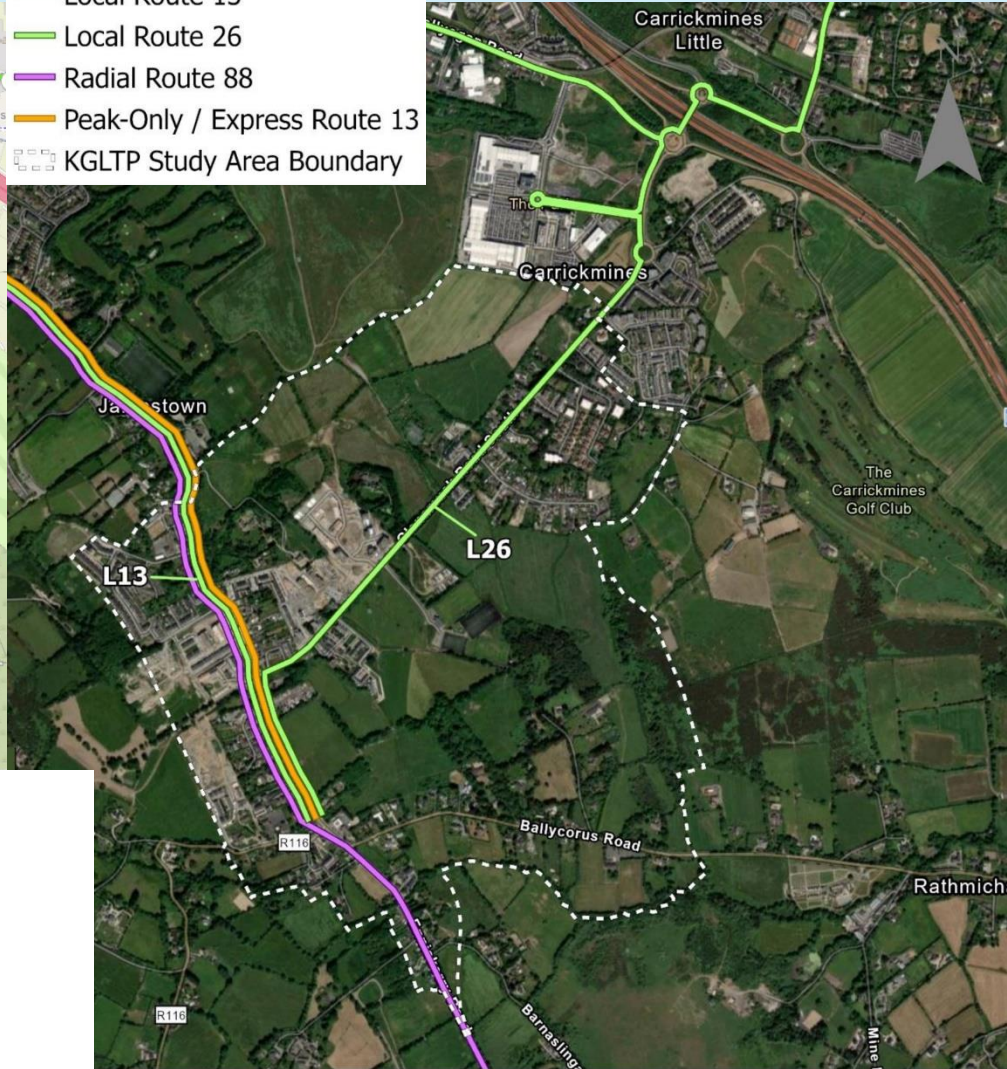










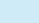


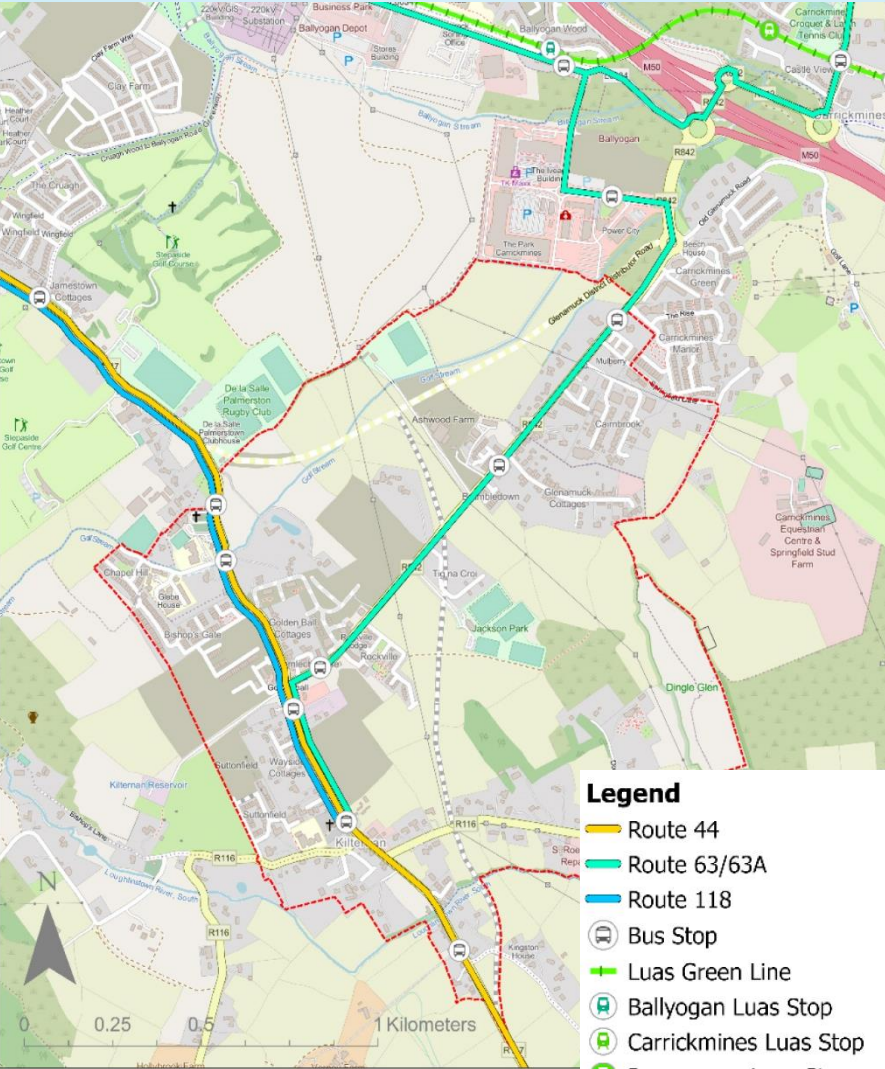
Legend

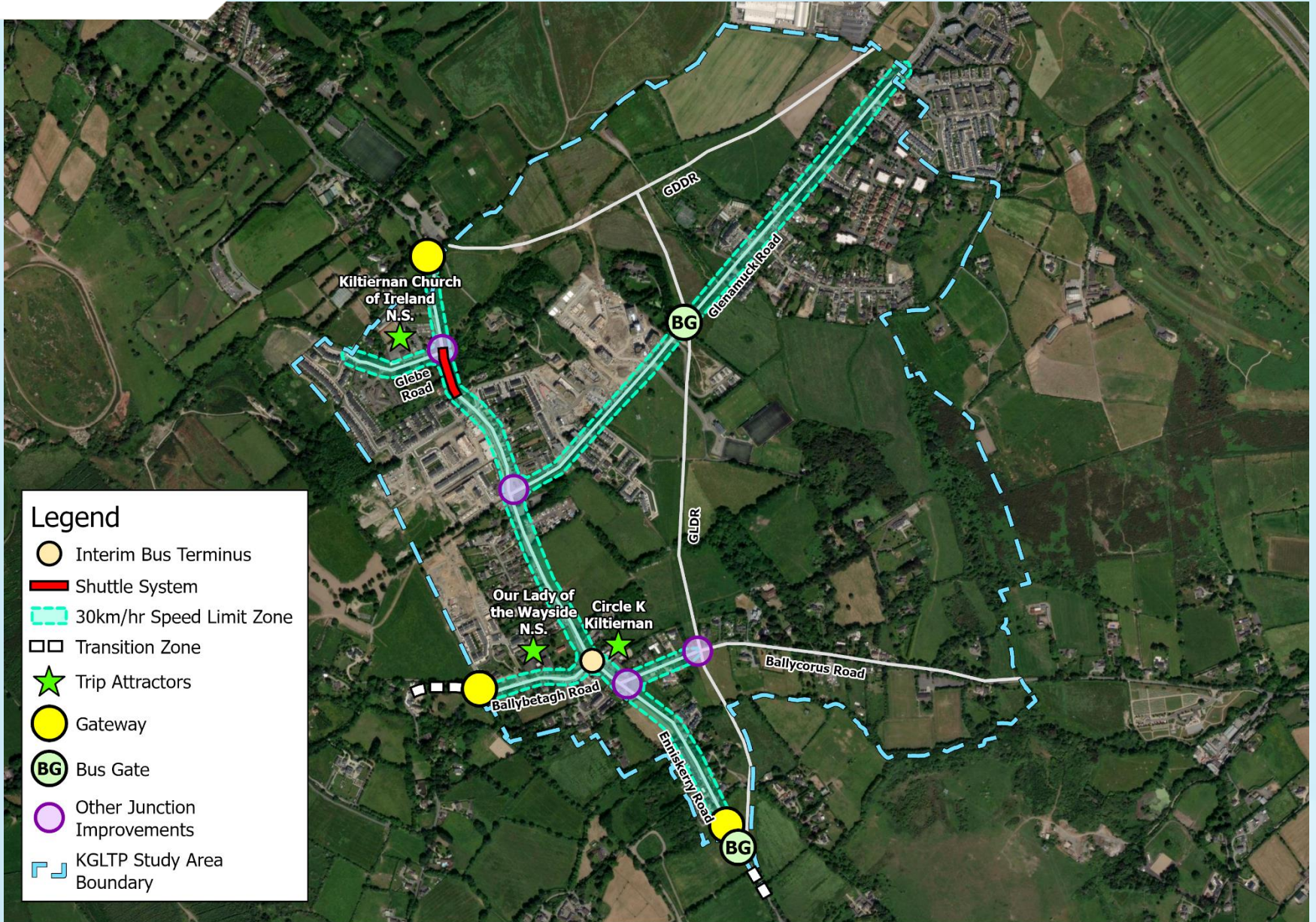
-  Local Route 13
-  Local Route 26
-  Radial Route 88
-  Peak-Only / Express Route 13
-  KGLTP Study Area Boundary



Legend

-  Route 44
-  Route 63/63A
-  Route 118
-  Bus Stop
-  Luas Green Line
-  Ballyogan Luas Stop
-  Carrickmines Luas Stop
-  Racecourse Luas Stop
- KGLTP 2025 Study Area Boundary









Chapter 7 - Biodiversity, Open Space and Recreation

Policy KGLAP 42 Biodiversity led design:

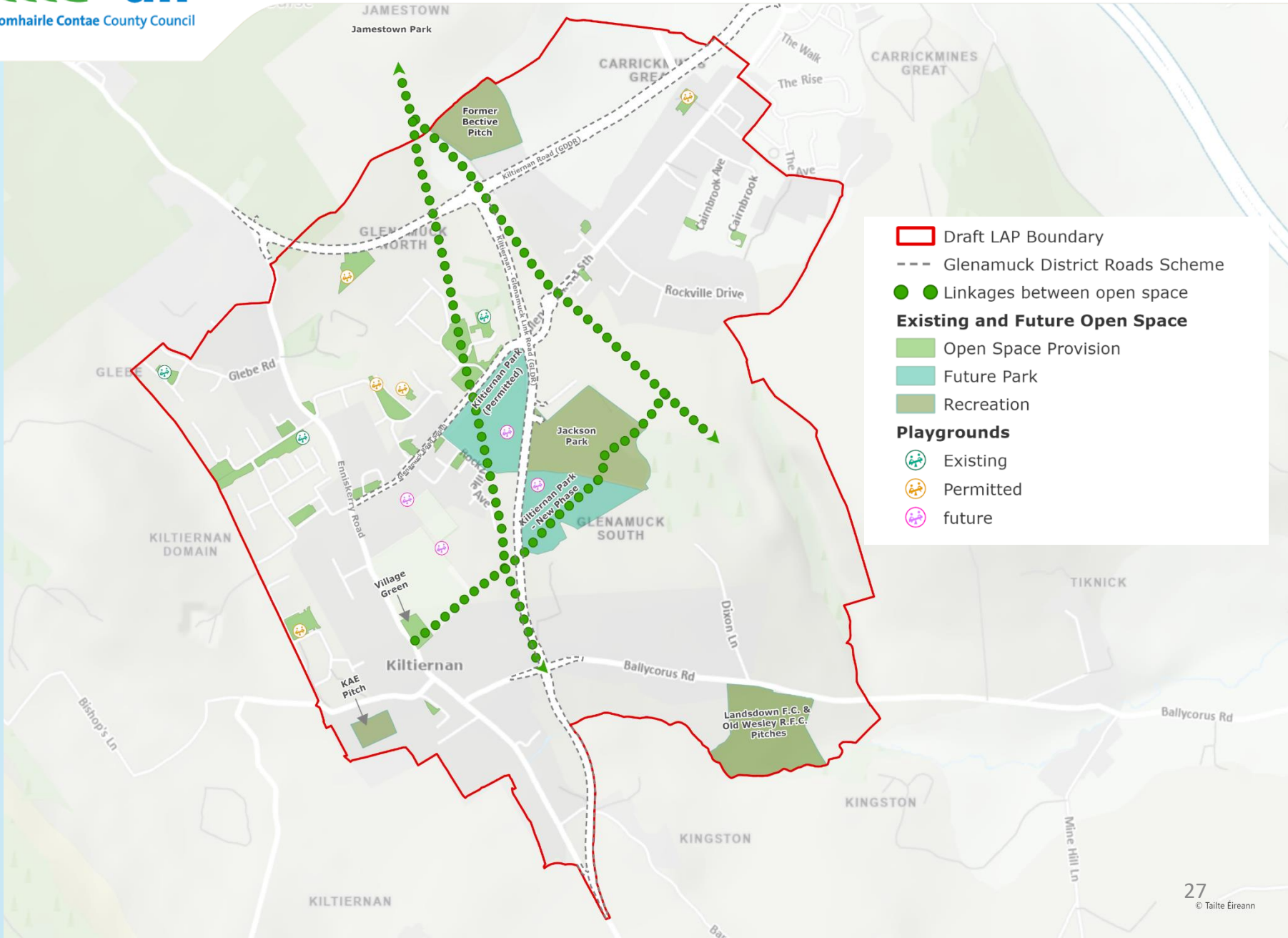
It is a policy that all multi-unit residential schemes and commercial developments demonstrate at pre planning and application stage how biodiversity has informed the layout and overall site framework for development.

Policy KGLAP 43 Biodiversity Net Gain (BNG):

It is policy at pre planning stage to encourage development consent application to pilot the Biodiversity Net Gain Approach (BNG) in development.

- **Draft Plan boundary extended to bring in Dingle Glen and Dixons Lane**
- **Draft Plan acknowledges the role the high amenity and agriculture land use zonings which adjoin the plan lands play in protection of sensitive areas.**





- Draft LAP Boundary
- Glenamuck District Roads Scheme
- Linkages between open space
- Existing and Future Open Space**
- Open Space Provision
- Future Park
- Recreation
- Playgrounds**
- Existing
- Permitted
- future

- Public display **6th February to 21st March 2025 – this is the time to Make a Submission.**
 - Preparation of Chief Executive's Report – Mid to end April 2025.
 - Consideration of Chief Executive's Report by Elected Members by mid June
 - **Elected Members make or Amend Plan June 2025**
- If there are material amendments
- Consultation on Material Amendments late June – late July
 - Preparation of CEs report in late July – late August
 - Elected Members make Plan by early October 2025

Venue: Kilternan Parish Centre

- Tuesday 25th February 2025: 4pm - 8pm
- Thursday 6th March 2025: 4pm - 8pm



How to make a Submission

Online:

- CitizenSpace consultation hub - on the Council's website homepage under **Public Consultation Hub**.

Write to:

- Senior Executive Officer, Planning and Economic Development Department, Dún Laoghaire-Rathdown County Council, County Hall, Marine Road, Dún Laoghaire, Co. Dublin.

