



GMC Utilities Group Ltd, GMC House,
Millenium Business Park, Cappagh Road,
Ballycoolin, Dublin 11, Ireland.
Tel: +353 (0)1 864 9800
Email: info@gmcirl.com

TRAFFIC MANAGEMENT PLAN

PROJECT
3686501 IW CDS New Connection

LOCATION
Barnhill Road Dalkey Dublin



RECOMMENDED PRINT A3 | ISSUED : 26/02/2025 | REVISION - 00 | TMPs - 02 | DESIGNER - K.MUNSTER | DRAWN - K.MUNSTER | APPROVED - D.GOUGH



FIG.A) CLOSURE POINT A

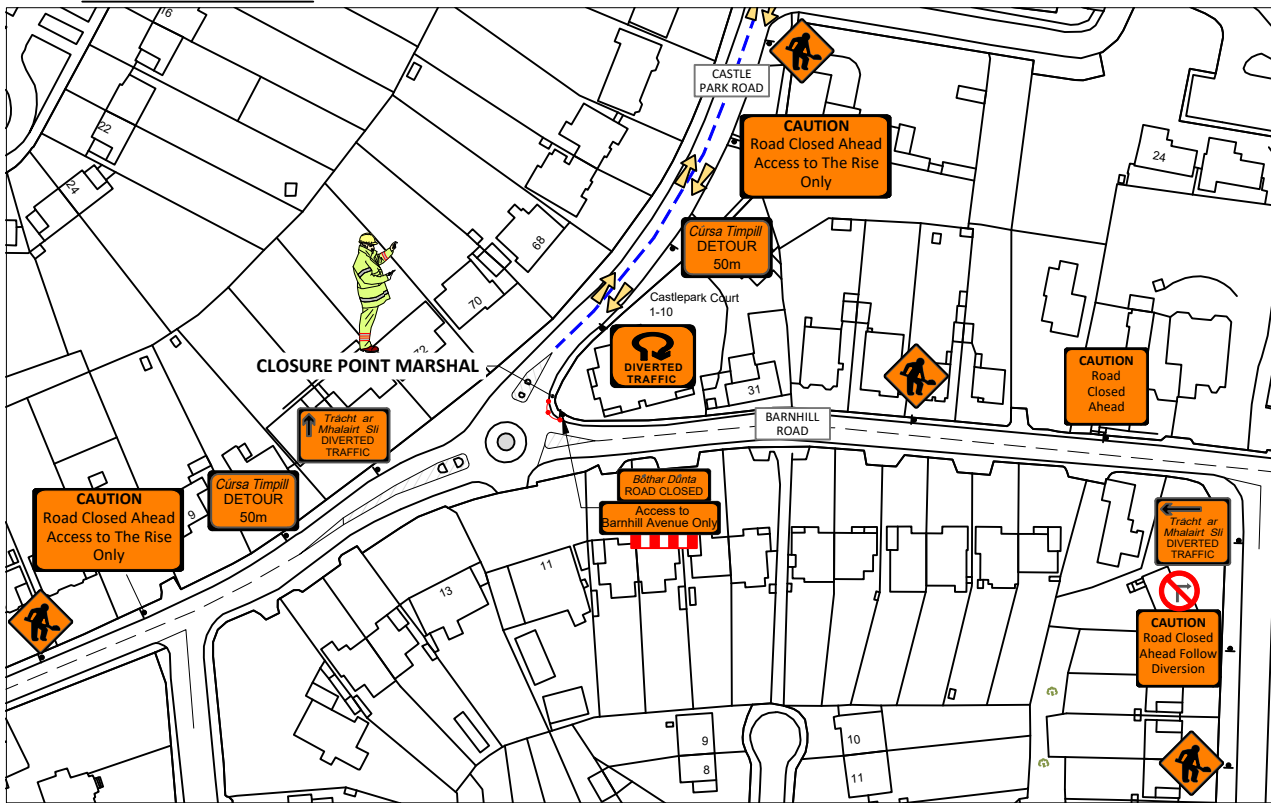
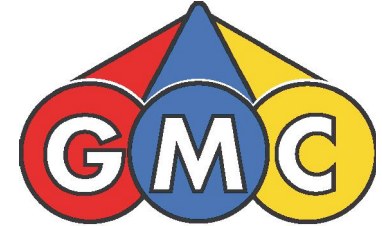
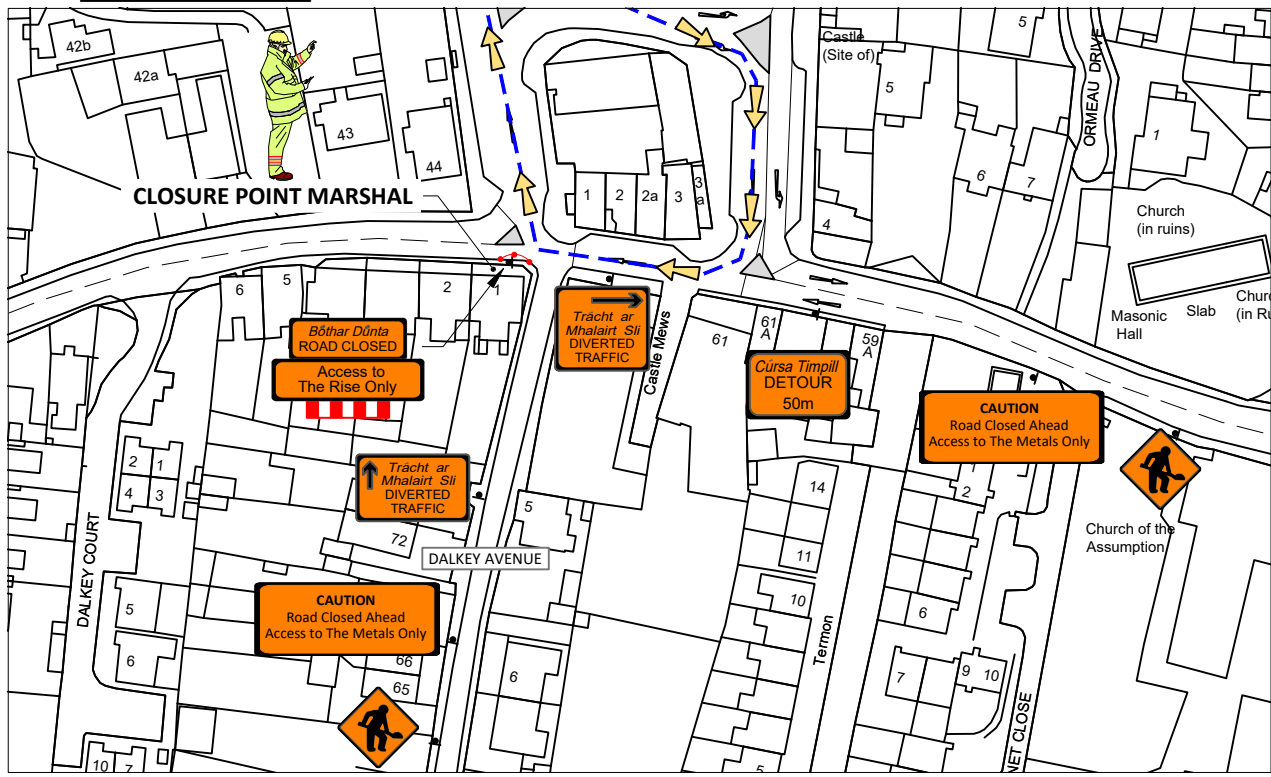


FIG.B) CLOSURE POINT B

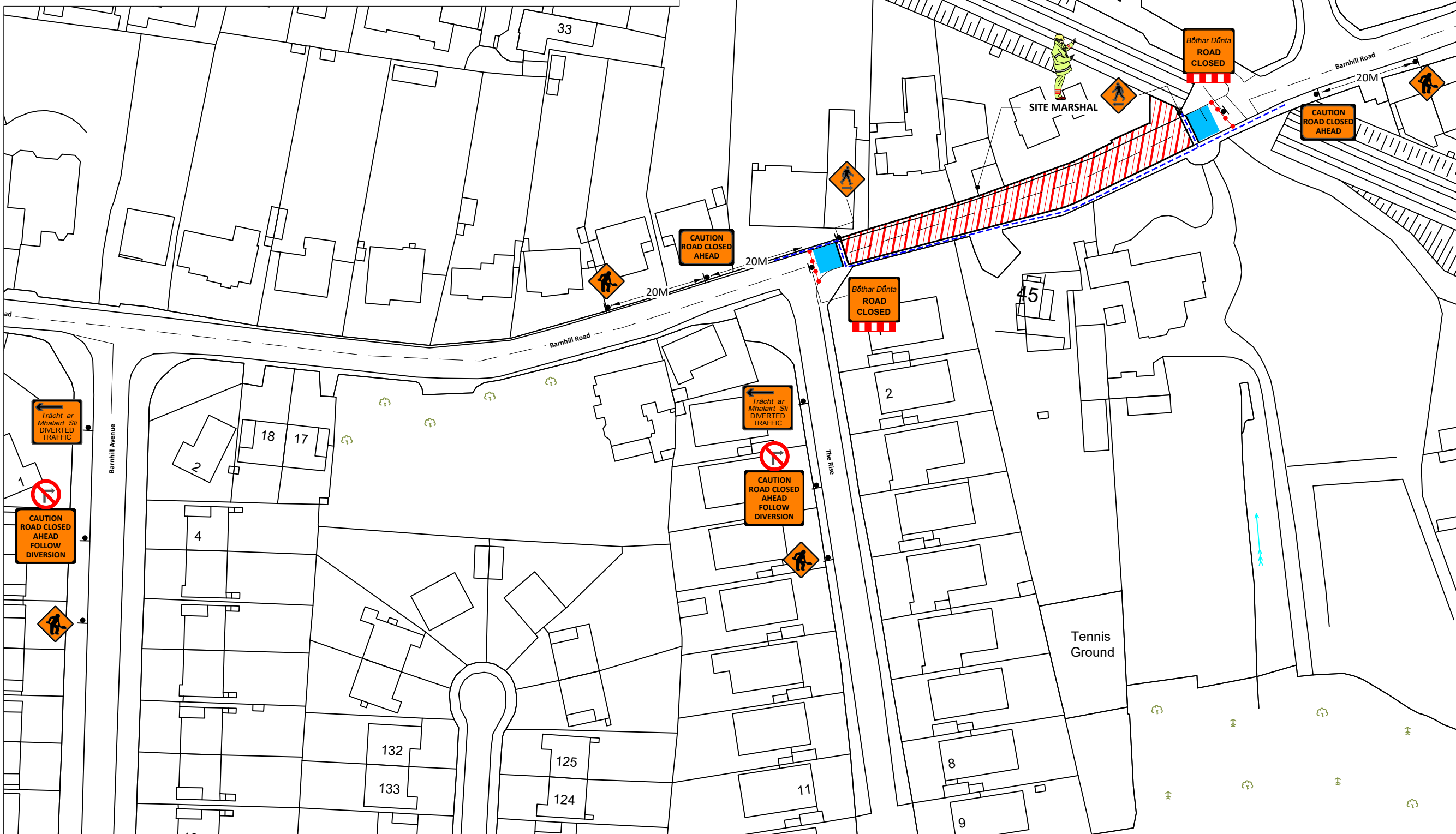


Project ;	3686501 IW CDS New Connection	
Location ;	Barnhill Road Dalkey Dublin	
TM Method ;	Road Closure - Diversion Route	
Designer ; KM	Drawn ; KM	Approved ; DG
Date ;	26/02/2025	
Scale ;	NTS	
TMP Guide Reference ;	TMP-001	
Dwg Number ;	GMC-TMP-21344-REV00	

CLOSURE POINT A
SEE FIG.A FOR DETAILED CLOSURE POINT

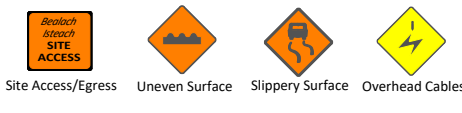
CLOSURE POINT B
SEE FIG.B FOR DETAILED CLOSURE POINT

SITE LOCATION MAP - Barnhill Road Dalkey Dublin



SITE SPECIFIC NOTES

- Traffic Management to comply with Temporary Traffic Management 2019 publications Chapter 8 Traffic Signs Manual, Design Guidance & Operation Guidance.
- Road closed, diversion route provided
- On single carriageway roads of 50 km/h signs to be placed at 20m intervals. Additional signage may be used where deemed necessary. (Type A & B)
- A Pedestrian walkway of 1.2m minimum to be maintained at all times, kerb ramps to be provided where required
- Work Area to be barriered at all times.
- TMP is based on information received at time of design, minor changes may be required on site. Major changes to site works will require revised TMP.
- Below signage to be used where required.....



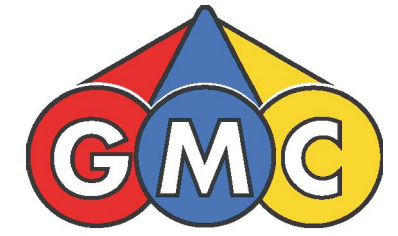
During darkness at unlit areas following a site risk assessment additional lighting to be installed

- LEGEND:**
- PEDESTRIAN ROUTE
 - WORK/PLANT AREA
 - SAFETY AREA
 - LATERAL SAFETY ZONE
 - PEDESTRIAN BARRIER
 - SITE BARRIER
 - CONES
 - SIGN LOCATION & ORIENTATION
 - BARRIER BOARD

Design Parameters for Level 1 (ii) (Single Carriageway 50 km/h)

Design Parameters	Roadworks Type A (>12 Hours)
Sign Size (mm)	600 Min
Sign Visibility (m)	50
Number of Signs	2
Cumulative Distance (m)	40
Distance between advance signs (m)	20
Minimum Rate of Taper	
Taper at Lane (m) ²	1 in 5
Taper at Hard Shoulder (m) ²	1 in 5
Maximum Cone Spacing	
Cone Height (mm)	750
At Taper (m) ²	3
Longitudinal (m) ²	3
Maximum Lamp Spacing	
At Taper (m)	6
Longitudinal (m)	6
Safety Zone	
Longitudinal (m)	5
Lateral (m)	0.5
Lanes	
Minimum Lane Width (m)	3 (2.5)
Two-way Roadway Width (m)	5

Note:
 A. 45 degree taper is required at active temporary traffic controlled layouts with cones at 1m centres.
 B. Cone spacing shown is the maximum permitted. Where geometry or any other site specific reason dictates the spacing shall be reduced accordingly.
 C. The optimum lane width for all classes of vehicles is 3.3m. This may be reduced to a minimum of 3.0m. Below this, HGVs and buses must be marshalled past the works. The absolute minimum lane width, if only cars and light vehicles are present, is 2.5m. Refer to Chapter 8, Paragraphs 8.4.3.1 to 8.4.3.3.



GMC Utilities Group Ltd, GMC House, Millenium Business Park, Cappagh Road, Ballycoolin, Dublin 11, Ireland.
 Tel: +353 (0)1 864 9800
 Email: info@gmcirl.com

Project ;	3686501 IW CDS New Connection	
Location ;	Barnhill Road Dalkey Dublin	
TM Method ;	Road Closure - Site Layout	
Designer ; AM	Drawn ; AM	Approved ; DG
Date ;	05/03/2024	
Scale ;	NTS	
TMP Guide Reference ;	TMP-002	
Dwg Number ;	GMC-TMP-21345-REV00	