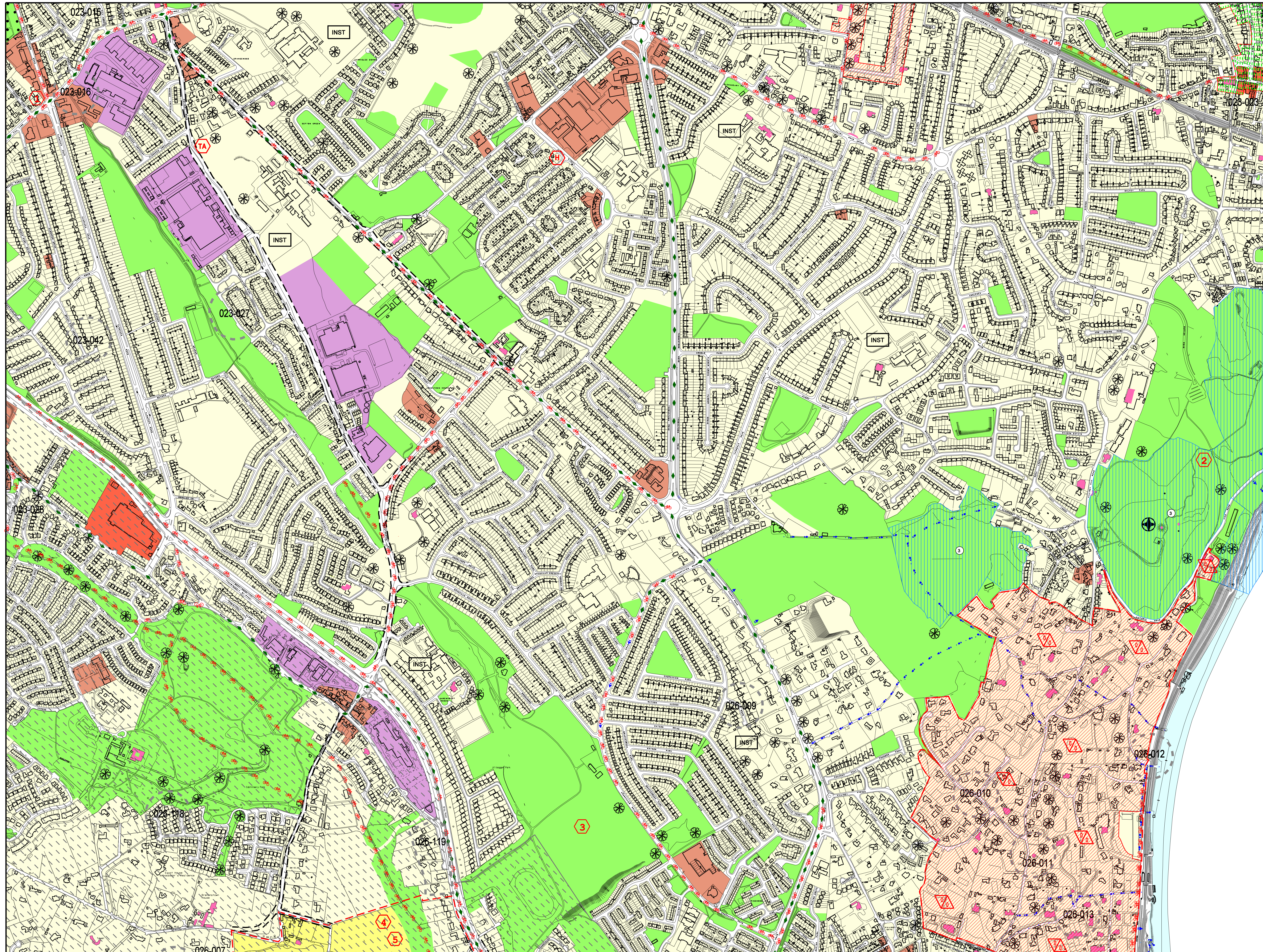
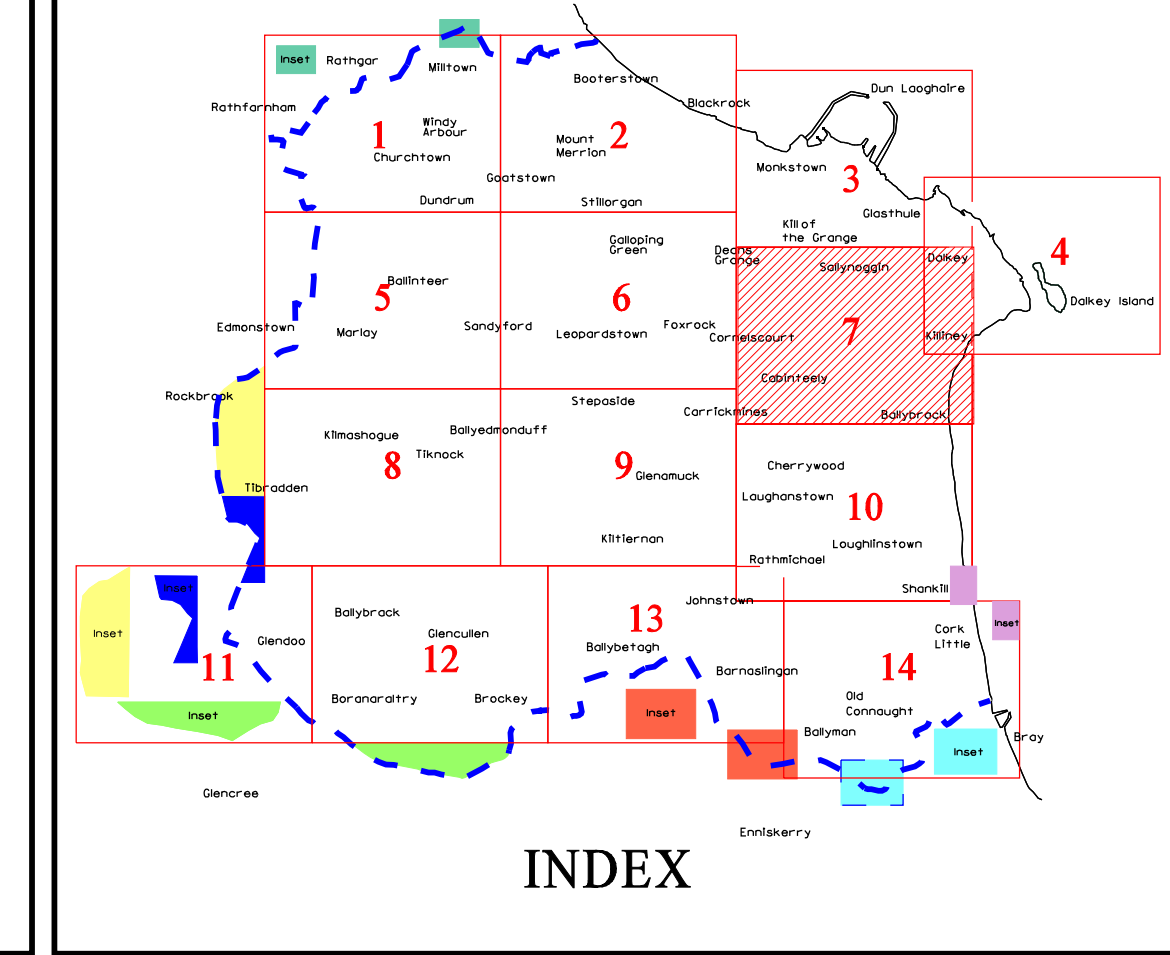


COMHAIRLE CHONTAE DHÚN LAOGHAIRE-RÁTH AN DÚIN  
**DUN LAOGHAIRE-RATHDOWN COUNTY COUNCIL**  
**DEVELOPMENT PLAN 2004 - 2010**  
 (20/04/2004)

INCLUDING VARIATION (No.10 Dalkey ACA) 08/10/2007



**USE ZONING OBJECTIVES**

- Objective A To protect and/or improve residential amenity.
- Objective A1 To provide for new residential communities in accordance with approved local area plans.
- Objective A2 To provide for a special development area.
- Objective B To protect and improve rural amenity and to provide for the development of agriculture.
- Objective NC To protect, provide for and / or improve neighbourhood centre facilities.
- Objective DC To protect, provide for and / or improve district centre facilities.
- Objective MTC To protect, provide for and/or improve major town centre facilities.
- Objective E To provide for economic development and employment.
- Objective F To preserve and provide for open space and recreational amenities.
- Objective G To protect and improve high amenity areas.
- Objective GB To protect and enhance the open nature of lands between urban areas.
- Objective W To provide for waterfront development and harbour related uses.
- Objective J To protect and improve coastal amenities.

**OTHER OBJECTIVES**

- Road Proposals - Long Term
- 6 Year Road/Motorway Proposal
- 6 Year Motorway Proposal (in tunnel)
- Proposed Luas Line (under construction)
- Proposed Luas Line Extension
- Proposed Cycle Route Objectives
- Proposed Quality Bus/Bus Priority Route
- Public Right-of-Way
- Wicklow Way
- Proposed Walkway/Cycleway (Sutton to Sandycove)
- Proposed Natural Heritage Areas
- Protected Structures
- Sites of Archaeological Interest (showing Department of Environment, Heritage, & Local Government Reference Numbers)
- Conservation Areas
- Architectural Conservation Areas
- To preserve Views
- To preserve Prospects
- To provide an Amenity Lay-by
- To provide for Car Parking
- To protect and preserve Trees and Woodlands
- Area Subject to Section 49 Supplementary Development Contribution Scheme
- To protect and / or provide for a Burial Ground
- Objective Boundary
- Specific Local Objective
- To provide accommodation for the Travelling Community
- County Council Housing Programme Site
- No increase in the number of buildings permissible
- To provide for a Primary School
- To provide for a Post Primary School or other Institution
- To protect and / or provide for Institutional Use in open lands
- Mews Development Acceptable in Principle
- County Boundary

*Note: The lines of the Road Proposals shown on this map are diagrammatic only and are subject to change during the detailed design process.*

SCALE 1 : 5000

Director: M.Gough, M.A., M.Sc., Dip.T.P., M.I.P.L., M.R.T.P.I.  
 Senior Planner: R.Cremis, Dip.Eav.Ec., M.I.P.L.

**7**